

POSTAL STATIONERY

COLLECTOR

Volume 12 No 4: Issue No 48

February 2007



THE POSTAL STATIONERY SOCIETY OF AUSTRALIA

The Postal Stationery Society of Australia has been established to encourage the collecting of postal stationery in Australia and New Zealand and to provide a forum for postal stationery collectors to maintain contact with other stationery collectors and to learn more about their hobby. The Society is not based in any particular city or state and plans to hold meetings at national and state level exhibitions. Subscription rate for 2006 has been set at \$35 (Australia) and \$50 (Overseas excluding New Zealand which is \$40). For further information please contact the Convenor, Secretary or your State Coordinator. Membership enquiries should be addressed to the Secretary.

OFFICE BEARERS:

CONVENOR: Ian McMahon, PO Box 783, Civic Square ACT 2608
SECRETARY Judy Kennett, PO Box 16, Ulmarra NSW 2462.
Email: jkennett@tpg.com.au
TREASURER John Crowsley, PO Box 2296 Keperra Qld 4054 .
Email: j.crowsley@uq.net.au

STATE COORDINATORS

QLD Bernie Beston, PO Box 1663, Bundaberg Qld 4670
QLD Joan Orr, 7 Mizzen St, Manly West Qld 4179
SA Martin Walker, PO Box 247, Torrensville Plaza, SA 5031
WA Ray Todd, PO Box 158, Dunsborough, WA 6281
NSW Bernie Doherty, PO Box 18, Waratah NSW
TAS Malcolm Groom, 225 Warwick Street, West Hobart Tas
VIC John Sinfield, PO Box 548, Heathmont, Vic 3135.
ACT Ian McMahon, PO Box 783, Civic Square ACT 2608
NZ Norman Banfield, 14 Rata Rd, Raumati Beach Wellington New Zealand

Web page: <http://www.canberrastamps.org/>

Postal Stationery Collector

Editor: Ian McMahon

Contributions to the Postal Stationery Collector should be sent to Ian McMahon, PO Box 783 Civic Square ACT 2608. Articles on any postal stationery topic are welcomed and, if possible should be submitted electronically. Illustrations should be good quality scans. Book reviews, news items, information on new issues and members classifieds are also welcome. Letters to the Editor and comments on articles published are encouraged.

COPYRIGHT: The copyright of the contents of the Postal Stationery Collector is held by the Postal Stationery Society of Australia. Items may be reproduced only with the written consent of the Editor.

ISSN 1324-2105

CONTENTS

	Page
<i>From the Editor</i>	97
<i>Advertising Card Depicting Postal Stationery</i> Ian McMahan	98
<i>Letter To The Editor</i>	99
<i>New Pictorial Postcard From Latvia</i> Arturs Neboiss	99
<i>A Contribution to the Classification of the Queensland Post Office Newspaper Wrappers Issued in the Period 1891-1912 Part 3 and Addenda</i> Sybrand J. Bakker	100
<i>International Reply Coupons: an Emerging Field for Postal Stationery Collectors?</i> Judy Kennett	105
<i>The Literature of Postal Stationery</i> Ray Price	106
<i>Historical Note on an Early Listing of Australian Commonwealth Postal Stationery</i> Judy Kennett	110
<i>PSSA Forum</i>	114
<i>Listing of Australian Non-Denominated Postal Stationery</i> Ian McMahan	116
<i>The “Big Three” of Newspaper Wrappers Of Victoria: Appendix</i> John K. Curtis	117
<i>Australia’s Small Domestic Registered Post Envelopes</i> Joan Orr	122
<i>Literature</i> Judy Kennett and Ian McMahan	125
<i>From the Secretary</i>	126
<i>New Issues</i>	127

FROM THE EDITOR

PSSA exhibitors were active during the last few months of 2006, achieving good results in National, FIAP and FIP exhibitions:

Kiwipex 2006 , New Zealand National Exhibition. Christchurch	
Stephen Schumann New Zealand Postal Stationery 1876-1940	Large Gold
Paul Yap Ceylon – Victorian Postal Stationery	Gold
Alistair Gow GB Registered Postal Stationery	Silver Bronze

Postal Stationery Collector

Ross Towle	Chile Postal Cards and Envelopes 1872-1929	Large Gold
Harold Waite	New Zealand Registered Envelopes 1884-1940	Silver
James Shaw	New Zealand ½d Newspaper Stamp Postal Stationery [One Frame]	Sapphire
 Stampex Pretoria 2006 , South African National Exhibition		
Philip Levine	Gold Coast Postal Stationery	Gold +SP
 España 2006 , FIP World Exhibition, Malaga, Spain 7 - 13 October 2006		
Bernard Beston	Queensland Postal Stationery	Gold [91]
John Sinfield	Scenic Lettercards of Australia	Gold [90]
Derek Pocock	The Postal Stationery of Nicaragua	Large Vermeil [85]
 Belgica 2006 , FIP Specialised World Exhibition		
Erica Genge	The Houses of Parliament Air Letters [One Frame]	Large Silver [77]
 Dubai 2006 , FIAP Exhibition		
Bernard Beston	Jordan Postal Stationery	Silver [75]

Northland 2007

Northland 2007 is a New Zealand half-national exhibition to be held at Whangarei, New Zealand (North Island), on 31 March – 1 April 2007. Classes include postal stationery and the PSSA is planning to have a meeting – see the Secretary’s Report for details.

ADVERTISING CARD DEPICTING POSTAL STATIONERY

Ian McMahan



I recently acquired, from a Canadian auction, an advertising card for Borreman V M & Co, Alost promoting Naaigaren Cotton Thread.

The card depicts a young women holding a 10c Italian post card depicting King Umberto I and addressed to Messers Borreman, encouraging you to send a postal card *Demandez les fils* [shouldn’t the card have been the 15c foreign rate card?].

Naaigaren Thread is still available today (although a quick Google search found no mention of Borreman V M). Alost (Aalst) is a city in East Flanders, Belgium, noted for the manufacture of textiles, clothing, and footwear. The reverse of the card has a listing of every day in 1883 with the corresponding Saints Day.

The auction also included a similar card depicting a Canadian 1c Queen Victoria card (which I wasn’t able to obtain), so the cards are presumably part of a series designed to be sent to clients around the world.

LETTER TO THE EDITOR

I refer to the report of the Society meeting at Adelaide Stampex 2006, which was published in Issue No 47 of *Postal Stationery Collector*. Bernie Beston sent along to the meeting a coloured Queensland view card title 'Timber getting, Neurum Creek, Queensland' [sic]. I quote 'This was thought to be some form of proof and had an extra interest in that the view was reversed in comparison with the issued black and white version'. (1) The card was illustrated on one of the inserted pages.

This card in its different forms has appeared twice previously in PSC. In Issue No 34 (2) is a report by Ian McMahon about six 1d Queensland postcards that had recently been offered on eBay. Five of the cards showed views that had not previously been reported. One was titled 'Neurum Creek, near Woodford, Caboolture-Woodford Railway', and was in black and white; another (untitled) showed the same view as above, but was reversed and coloured. Ian gave the realizations in Australian dollars; these were high priced cards.

In PSC Issue No 35 there is an article by Bernie Beston '1910 Queensland view cards – new discoveries' where he wrote about this card in both the issued black and white and coloured versions. Of the latter, he writes 'The view has no caption, and the scene is in reverse of the issued card (3). The latter card is also found in a commercial format. I have a copy of it, published by 'The Special Series coloured' and postally used in Brisbane. Unfortunately the adhesive has been removed, taking with it the date of posting and part of the Brisbane cds. This was also noted in Issue No 35 of the journal. (4)

This view card, in both its official and commercial formats, continues to excite interest. For that reason I am drawing the attention of members to the information published about it in PSC during 2003.

Judy Kennett

References

1. 'Meeting report', *Postal Stationery Collector*, Vol 12 No 3 Issue No 47 November 2006, pages 93-94.
2. 'Auction News: New Queensland View Cards', *Postal Stationery Collector*, Vol 9 No 2 Issue No 34 August 2003, pages 55-57.
3. Bernie Beston, '1910 Queensland View Cards – New Discoveries', *Postal Stationery Collector*, Vol 9 No 3 Issue No 35 November 2003, pages 73-76.
4. Judy Kennett, 'Queensland View Card – Again', as above, page 78.

NEW PICTORIAL POSTCARD FROM LATVIA

Arturs Neboiss

A new prestamped postcard (Postcard #37) was issued by Latvia Post on 27 October 2006. This issue commemorates the participation at the International Philatelic Exhibition "Sindelfingen 2006" in Sindelfingen, Germany. The postcard design depicts the common kestrel (*Falco tinnunculus*). It is noted that the name on the postcard is wrongly spelt 'tinnunculuc'. A special squared postmark was available at the exhibition from 27 to 29 October. The number of postcards issued is not yet available. The nominal value '40' is stated in Latvian currency.



**A CONTRIBUTION TO THE CLASSIFICATION OF THE QUEENSLAND POST OFFICE
NEWSPAPER WRAPPERS ISSUED IN THE PERIOD 1891-1912 PART 3**

Sybrand J. Bakker

(continued from PSC November 2006)

4.2. Minor Varieties

Stamp sub-types

Robson Lowe describes the 4 stamp sub-types of SG 13,15 (and 20) (Scott A 7, A 9 (and A 14)) used in the printing of the ½d wrappers, calling these stamp types I, II, III and IV. The moulds used for the printing of the stamps were made by taking 4 transfers of the original dies. This resulted in 4 sub-types in the secondary state of the original dies. To identify the stamp impression sub-type, the type numbering by Robson Lowe can be added to the proposed catalogue numbering WR 1.1 - WR 2.1, WR 3.1 and WR 3.2, for example: WR 1.1 Type I. The same applies also for the 1d wrappers WR 2.2, WR 3.3 (and WR 5.2 and WR 6.2).

Text block varieties

The minor varieties listed hereafter are varieties in Text blocks a, b, c and d. These varieties may be related to the several printings made of a certain type of wrapper. In some varieties part of the type is missing, perhaps due to wear of the setting or by an unevenness of the paper used. These varieties cannot be considered as constant varieties. In some cases new types of a different font replaced the worn types, or another setting was made. These varieties are, at least in a certain printing, more or less constant varieties. Small changes of the spacing of the wording resulted in text blocks of other measurements. According to Collas and Courtis, a small change in the setting occurred in 1904. The most prominent change in the setting of Text block c was made in the 1910-1912 printings. Due to wear, the text block was reset and for the resetting a different font was used. The width of the text block changed from 75-77 mm to 80-82 mm, resulting in Text block d. Other varieties will certainly show up.

Guillotine marks.

All printed wrapper sheets of 8 have such a mark in one way or another. By cutting the sheets to Post Office sheets of 4 or to single wrappers the mark exists on one wrapper out of 8 only. The differences of the mark are not listed, as these cannot be attributed to a certain type of wrapper. Research has to be carried out to record the differences in marks applied to the different wrapper types.

Paper quality, gumming and measurements

Apart from the paper quality used for the First and Second Issues, other paper qualities are not listed as varieties. Wrappers printed on different paper qualities, such as light and dark buff papers, horizontally or vertically laid or wove papers, are collectable items. These differences, however, cannot be attributed to a special printing by lack of evidence, as it seems that the different paper qualities were used randomly even for the same type of wrapper (in later printings).

The same can be said for wrappers with and without gum. Most of the wrappers were supplied in both ways, especially those of groups 2-4. And, of course, the specialised collector can make a collection more complete by showing unused wrappers with and without gum, as these were officially supplied by the Post Office.

The measurements are described in general. Differences in measurements are caused by the original measurements of the printing sheets of 8, the guillotine process or by somebody else who just cut off a damaged part of a wrapper (quality by 'fraud').

Not listed are minor varieties caused by paper quality and gumming, guillotine marks and measurements; neither are listed varieties due to a bad or incomplete printing of the stamp impression, as these varieties can occasionally occur in all wrappers. These varieties are a nice addition to a collection, but unimportant for classification.

Summary of the Minor Varieties

½d	WR 1.1/1.3	1-A 7/5-A 9	No stop after '.....otherwise)', due to wear
½d	WR 1.1a	2-A 7	Broken 't' in 'packet' in part of the printings, not a constant variety, Gory
½d	WR 1.3a	5-A 9	Dropped 'b' in 'If this rule be infringed', a constant variety in a part of the printings, Stieg
½d	WR 2.1	(3-A 7?)	Dropped 'b' in 'If this rule be infringed', a constant variety in a part of the printings, Stieg
1d	WR 2.2	11-A 15	Dropped 'b' in 'If this rule be infringed', a constant variety in a part of the printings, Stieg
½d	WR 3.1	7-A 9	Hand-drawn 'y' in statutory, Courtis This variety can be described as 'y' in wrong font
½d	WR 3.2	8-A 14	First 'o' of 'communication' in wrong font, Collas and Courtis
½d	WR 3.3	12-A15	Missing dot on 'i' in first i of 'infringed'
½d	WR 4.1	9-A 14	Hand drawn 'y' in 'statutory'. ('y' in wrong font). Weak closing bracket after 'otherwise', Courtis
½d	WR 4.1	9-A 14	Reset text block: 'h' of 'such' and 'a' of 'as' left of 'W' of 'Wrapper' and 'o' of 'only' of previous line
½d	WR 4.2	10a-A 20	Hand drawn 'y' in 'statutory' ('y' in wrong font), Courtis
½d	WR 4.2	10a-A 20	Reset text block: 'h' of 'such' and 'a' of 'as' left of 'W' of 'Wrapper' and 'o' of 'only' of previous line
½d	WR 5.1	10-A 20	No stop after 'enforced', Collas and Courtis
½d	WR 5.1	10-A 20	Reset text block: 'h' of 'such' and 'a' of 'as' left of 'W' of 'Wrapper' and 'o' of 'only' of previous line
1d	WR 5.2	13-A 15	Reset text block: 'h' of 'such' and 'a' of 'as' left of 'W' of 'Wrapper' and 'o' of 'only' of previous line
1d	WR 5.2	13-A15	No stop after 'enforced'? This variety is not mentioned by Collas and Courtis for the 1d wrapper

Note:

1. For the ½d and 1d wrappers in which the 4 stamp sub-types are present, the sub-type numbering of Robson Lowe can be added after the catalogue number to identify the stamp sub-type

4.3 Cross-references

In **Table 3 Classification cross-reference**, a concordance of Newspaper Wrapper types by the classifications of Ascher, Robson Lowe, Courtis and this proposed classification is provided. For those who are used to referring to Higgins & Gage, these catalogue numbers are included as well.

Most authors, except Ascher and Courtis, give a chronological listing of the wrappers regardless the differences in the position of the stamp impression in relation to the text block. Once again, as also mentioned by Stieg, the layout is the major characteristic for the classification of the Queensland Post Office Newspaper Wrappers. In the identification and the classification of the Queensland Post Office Newspaper Wrappers more attention should be paid to the layout characteristics.

5. Bibliography

1. Collas, P. Queensland Postal Stationery, The Backgrounds and the Issues The Hawthorn Press Monographs No. 29, 1979
2. Courtis, J. K. Classifying Queensland Post Office Newspaper Wrappers Philately from Australia Vol. LVI, No. 3, September 2004
3. Ascher Grosser Ganzsachen Katalog
4. Higgins & Gage World Postal Stationery Catalogue
5. Robson Lowe The Encyclopaedia of British Empire Postage Stamps 1788-1912 Vol. 4. Robson Lowe Ltd. London, 1962

Postal Stationery Collector

6. Stieg, C. L. The Postal Stationery of Queensland – Wrappers Australian Chit Chat, Vol. 8, No. 11, February 1974
7. Scudder, K. Queensland: The ½d of 1899 and the dies leading to its use Philately from Australia Vol. LIII, No. 4, December 2001
8. Beston, B Presentation Pacific Explorer Exhibition, Sydney March 2005
9. Stieg, C. L Victoria Postal Stationery 1869-1917 Triad Publication, Weston, USA, 2001
10. Groom, M. Postal Stationery of the Australian Colonies/States Part One Western Australia, compiled by Pope, B. The Postal Stationery Society of Australia, May 2002
11. Gory, A. Private correspondence

Note 1

After writing the first draft of this article, the findings of Dave Elsmore, published in PSC February 2005, came available to me. The author's personal feeling is the following:

1. In 1895-1896, before the final decision was made to replace SG 13 (Scott A 7) by SG 15 (Scott A 9), a printing was made, with SG 13 in Layout aw of Group 2. The general public, however, criticised the SG 13 impression and consequently the wrappers (Collas). The wrappers were withdrawn and not put on sale at Post Offices in Queensland. Then new wrappers were printed with SG 15. The wrappers with SG 13 were used for private overprinting only.

2. In 1896 a separate order was placed for private wrappers and the Government printer inadvertently used the earlier stamp die SG 13 for printing this order. Real evidence for these hypotheses is not available. The author is looking forward to suggestions of PSC-readers. In case a ½d wrapper with SG 13 (Scott A 7) in the Layout aw of Group 2 shows up, I conclude that both stamp dies SG 13 and SG 15 were used in the same period for a short time. However, I am not aware of such a Post Office Newspaper Wrapper at the present time. If it exists, such a wrapper should be added to Group 2 of the classification. Reference Elsmore, D. Queensland Wrapper with Private Printing, *PSC*, Vol. 10 No 4: Issue No. 40, February 2005.

Note 2

After the identification and description of all the Queensland Post Office Newspaper Wrappers is concluded a consecutive numbering of the types could be considered to make a definitive classification. Possibly not all Queensland Post Office Newspaper Wrappers are classified in this article. PSC-readers are requested to give comments by e-mail, eventually with scans of newspaper wrappers not listed in this study. Also scans of wrappers with guillotine marks are highly welcomed. The author is also interested in receiving information regarding private printed wrappers (see articles by Elsmore, *PSC*, February. 2005 and by Beston, *PSC*, February 2006).

Acknowledgements

The reason for this publication is the article written by John Courtis for the September issue of *Philately from Australia*. He described the layout of the Queensland Post Office Newspaper Wrappers as a primary identification and classification tool. However, Courtis did not list all known wrappers, and his article also raised some questions regarding the identification and classification of the 1893-1895 and 1899 wrappers.

It would not have been possible to finish this study without the help of fellow collectors. My sincerest thanks go to Allan Gory, Australia, for his support, and for reading, commenting and discussing the draft of this article and for supplying scans and information based on his own collection. Thanks also to David Collyer, Australia, for supplying general information regarding newspaper wrappers and catalogue listings. Furthermore I would like to thank the members of ZWP (South West Pacific Study Circle), The Netherlands, for their assistance. Special thanks to Wim Tukker for showing me his collection and discussing the proposed classification and to Han Dijkstra for reading the final draft, correcting my English and giving advice on the final editing of this article.

Table 3 Classification Cross-reference

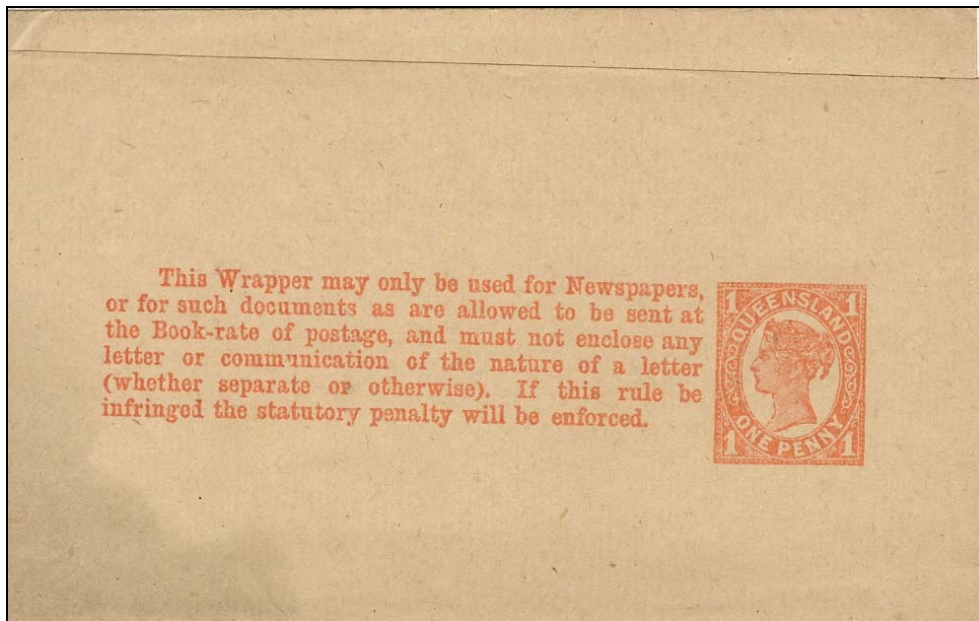
De-nomination	Date or year of Issue	Wrapper Type Robson Lowe	Wrapper Type Ascher	Wrapper Type H&G	Wrapper Type Courtis	Wrapper Type Bakker	Remarks
½d	Nov. 1891	WP 1	1 a	E 1	1-A 7	WR 1.1	First Issue of the ½d Post Office Newspaper Wrapper in Queensland with SG 13 (Scott A 7) impression
½d	Dec. 1892	-	1 c	-	2-A 7	WR 1.1a	A sub-type (variety). Diagonally cut top corners. Not mentioned by H&G and R L
(½d)	-	-	-	-	(3-A 7)	-	Courtis is possibly mistaken? See Type WR 2.1
½d	1893/94	WP 1	1 b	E 1	4-A 7	WR 1.2	Change of paper. H&G Type E 1 and R&L Type WP 1 are printed on a range of (different) paper qualities
½d	Feb. 1895	WP 2	2 a	E 2	5-A 9	WR 1.3	Change of SG 13 (Scott A 7) to SG 15 (Scott A 9) impression
½d	1896	-	-	-	6-A 9	WR 1.3a	A sub-type with a reset text block Not mentioned by H & G, R L, A
½d	1896	WP 2	2 b	-	(3-A 7?)	WR 2.1	Change of layout. Erroneously called Type 3-A 7 by Courtis? Not mentioned by H&G
1d	1897	WP 3	3	E 3	11-A 15	WR 2.2	First Issue 1d Newspaper Wrapper with SG 21 (Scott A 15) impression
½d	1897	WP 4	4	E 4	7-A 9	WR 3.1	Change of layout, text block
½d	Oct. 1898	WP 5	5	E 5	8-A 14	WR 3.2	Change of SG 15 (Scott A 9) to SG 20 (Scott A 14) impression
1d	Late 1898	WP 6	6	E 6	12-A 15	WR 3.3	Second Issue 1d Newspaper. Change of layout
½d	Early 1899	WP 7	7	E 7	9-A 14	WR 4.1	Change of layout, text block
½d	Sept. 1899	-	-	-	10a-A 20?	WR 4.2	Not a sub-type, but the first issue of the Newspaper Wrapper with SG 26 (Scott A 20) Die IIIb, Queen's face with lines of shading
½d	Late 1899	WP 9	9 a	E 9	10-A 20	WR 5.1	Change of layout, ½d SG 26 Die III to SG 26 Die IV (Scott A 20), Queen's face without lines of shading. Final ½d Newspaper Wrapper 1899-1910. H&G, RL and A mention only one wrapper with SG 26
1d	Late 1899	WP 8	8	E 8	13-A 15	WR 5.2	Change of layout. Final 1d Newspaper Wrapper 1899-1910
½d	1910	WP 9	9 b	E 9a	10-A 20	WR 6.1	Change in layout, length of text block 80-82 mm
1d	1910	-	-	-	13-A 15	WR 6.2	Change in layout, length of text block 80-82 mm. Not mentioned by H&G, R L and A

Addenda

An additional Queensland Newspaper Wrapper has come to light. The wrapper should be classified as: WR 4.3. Issued in 1899 (between January and September). John Courtis has also sent me a scan of this wrapper, but his is used, so at least two copies of WR 4.3 exist.

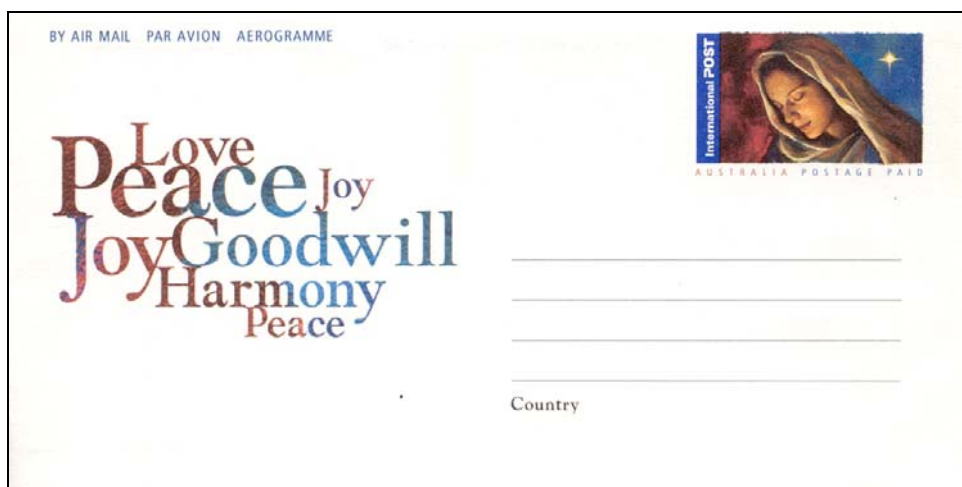
WR 4.3 Mid 1899 Issue 1899-3 Change of layout 1d wrapper

Stamp impression	1d dull-bright vermilion SG 21 (Scott A 15)
Layout	cx
Paper	Light to medium buff, vertical laid (or wove) paper, glazed (smooth) on the printed side



AUSTRALIA CHRISTMAS AEROGRAMME 2006

Australia Post issued the traditional Christmas aerogramme on 1 November 2006. The aerogramme depicts the Virgin Mary and was designed by Anne Spudvilas.



February 2007

INTERNATIONAL REPLY COUPONS: AN EMERGING FIELD FOR POSTAL STATIONERY COLLECTORS?

Judy Kennett

A new design of international reply coupon (IRC) appeared in Australian post offices late in 2006 (at a guess, in November). This new design has come at a time that there is more interest in IRCs, signaled by notes and articles in postal stationery journals, and the publication of a book on IRCs by Vaccari, an important Italian publishing house for catalogues and books on philately and other paper collectables.

That book is *I Buoni-Risposta Internazionale, con particolare riguardo ai Buoni-Risposta emessi dalle Poste Italiane* [International reply coupons, with particular emphasis on reply coupons issued by the Italian Post Office], by Vincenzo Altavilla, published 2006. (See comment on this book in *Postal Stationery Collector* Vol 12 No Issue No 47 November 2006).

In the literature cited in this current issue of the journal, there are two announcements of the release of the new design of coupon, which is called Beijing Type 2, and will remain valid until 31 December 2009. The first, in *The Postal Stationery Society Journal [UK]* for November 2006 gives an illustration of the new coupon, together with a detail of the hologram which is placed on the lower edge. The second announcement is in *La Lettre de l'ACEP* No 64 November 2006 (a newsletter publication), and also illustrates the coupon.

There is also a brief mention in our Literature section of an article in *The London Philatelist* for November 2006, which gives an outline of the introduction of the IRC, which has its centenary in 2007. It is illustrated with examples for Denmark. The Editor of the LP has asked if any member would be able to provide an in-depth article on the subject for the centenary year. Watch this space!

David Collyer provided me with photocopies of two interesting articles on IRCs. The first, in French, is called 'Echange de bons procedes' [Exchange of friendly services], and was published in *L'Echo de la Timbrologie* for July-August 1998. It gives a historical sketch of the use of IRCs, and has a short bibliography. The second article comes from *Great Britain Philatelic Society (GBPS) Newsletter 295* for September/October 2005. The author discusses background, watermarks, withdrawal, and mentions some of the regional postal union types issued, particularly British Commonwealth (since 1927). He gives a listing he has produced of British and Commonwealth coupons.



If interested members would like copies of any of the notes and articles I've cited, please contact me at jkennett@tpg.com.au, or at the postal address inside the front cover of the journal. Further enquiries could be directed to David Collyer at d_collyer30@hotmail.com (please note that there is an underscore _ between 'd' and 'c' in David's email address.

THE LITERATURE OF POSTAL STATIONERY

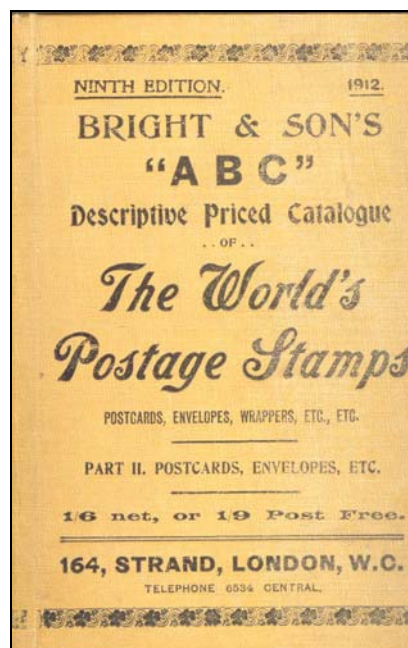
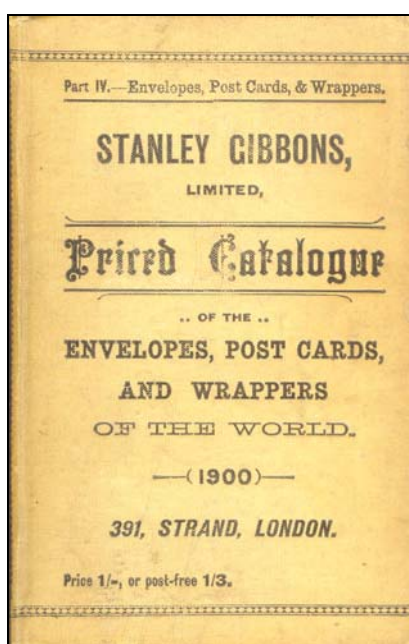
Ray Price

A feature of philately which distinguishes it from other hobbies is the enormous amount of published literature, greater than that for any other hobby. Postal stationery is just a small part of the whole and its information is scattered far and wide. If we had been talking about postage stamps we would expect to find annual catalogues in a number of languages containing worldwide listings of all the stamps ever issued, national and area catalogues, a large number of society journals, commercial journals, auction catalogues, dealer listings, handbooks and monographs and Internet sites in profusion. But we are talking about postal stationery which went through a long period of decline beginning at the start of the First World War and continuing through most of the rest of the 20th Century.

What is there and what would we want to find? Challenges for any stationery collector are to find out what exists and where to get information about new issues, how to get a sense of value of these items, and where they are being offered for sale. As interest grows there will also be a need to find a Society to join, a specialist handbook, a journal or two to buy on subscription, and a source of some reference and research materials will also need to be located.

Bibliographic sources

Bibliographies and catalogues are a starting point when you have no idea what you are looking for. There are a number of bibliographic sources and philatelic literature guides which provide general listings of the books and journals which have been produced. A good place to start is with James Negus' *Philatelic literature: compilation techniques and reference sources* (James Bendon, 1991), an excellent overview of all philatelic publication. There are a number of published library catalogues including *Catalogue of the Philatelic Library of the Earl of Crawford*, published between 1911 and 1926 and recently reprinted in one volume by James Bendon in 1991; *Philately: a Catalog of the Collectors Club (New York) Library*, (GK Hall, 1974); *The Royal Philatelic Society of Victoria Library: a History and a Catalogue* (RSPV, 1996) which provide details of the books in those libraries. A very useful index to articles and books to 1926 is Albert Harris' *The Standard Index to Philatelic Literature* originally published in 1933, and reprinted by James Bendon, 1991. There is also my *Harry Hayes Philatelic Literature Auctions, Index to Lots and Realisations* which lists books offered in the Hayes' literature auctions up to 1987.



Classic sources: - Catalogues

The classic sources for stationery are nearly all older catalogues, comprehensive in scope, but sketchy in the detail they provide. Perhaps the starting point for any worldwide collector is the *Priced Catalogue of Postal Stationery of the World* produced by Higgins and Gage in 19 loose-leaf sections with various updates including complete new editions of some sections, and some price supplements between 1964 and 1984. Fortunately for the collector of Australasian stationery there was a special edition of this catalogue produced for release at Ausipex in 1984. Earlier works include *Stanley Gibbons descriptive catalogue and price list Part IV: Envelopes and wrappers, post cards and letter cards* last issued in 1900, Maury's *Catalogue descriptive de toutes les enveloppes et bandes postale, feuilles-telegraph etc* and his *Catalogue descriptive de toutes carte-poste, cartes-lettres et cartes-telegraphes etc* last issued around 1910, Bright and Sons' *ABC descriptive prices catalogue of the world's postage stamp, envelopes, post cards etc. Part 2 Postal stationery* last issued in 1914. Gebruder Senf also produced a postal stationery volume in their *Illustrierter Postwertzeichen-Katalog*. In the mid 1920s Dr Siegfried Ascher produced his *Grosser Ganzsachen Katalog* in 2 volumes, reprinted in 1975, and in 1996, with an updated valuation supplement, making it rather more readily available than the other older works. For the collector of the British Empire, Robson Lowe's *Encyclopaedia of British Empire Postage Stamps* lists postal stationery items issued by each of the countries prior to about 1950.

Electronic sources: Catalogues

The advent of the Internet has given access to many electronic files of interest to the philatelist. Major national libraries such as the Library of Congress (<http://catalog.loc.gov/>), the British Library (<http://www.bl.uk/catalogues/listings.html>), and the National Library of Australia (www.nla.gov.au) are available on-line and their holdings include many philatelic books and journals. This is enhanced in many countries where deposit legislation has been enacted. This legislation requires publishers to provide one or more major libraries with a free copy of every book and journal published. Deposit libraries should be good places to look for philatelic publications, however small philatelic publishers often seem to be ignorant of such requirements. Some major philatelic libraries have made their catalogues available over the Internet, including the American Philatelic Research Library (www.stamps.org/TheLibrary/lib_CardCatalog.htm) and the National Philatelic Society in London at <http://www.ukphilately.org.uk/nps/db/database.asp>.

Specialist stationery catalogues:

Many of the more popular countries have a specialist catalogue listing either stationery or stamps and stationery, usually issued on an irregular basis. Some typical examples are the stationery listings in the *Specialized Catalogue of United States Stamps and Covers*, issued annually by Scott Publishing Co, the Michel Stationery catalogues for Germany and for Europe (*Michel Ganzsachen-Katalog* and *Michel Ganzsachen-Katalog Europa*), Robert Samuels' *New Zealand postal stationery catalogue* and the editions of Seven Seas' *The Australasian Stamp Catalogue* which included stationery. The IFLA Web Site (details below) has a lengthy but incomplete list of catalogues. Examples of recent catalogues of interest to me but not on the IFLA site include *Standard Catalogue of Malaysia Singapore Brunei Revenue Stamps and Postal Stationery* (Kuala Lumpur: International Stamp and Coin Sdn. Bhd, 2002) and *Occupied Dutch East Indies and Republic of Indonesia 1942-1949. Postal Stationery* (Weesp: De Nederlandsche Postzegelveiling, 2002).

This Society is engaged in a programme to produce a series of catalogues covering the stationery of each of the Australian States. The catalogue for Western Australia, *A Priced Catalogue of Postal Stationery of the Australian Colonies / States. Part 1: Western Australia* was published in 2002 and those for some of the other States exist in draft format.

Periodicals - Specialist:

There are a number of specialist stationery journals, all issued by societies.
Postal Stationery Collector (Postal Stationery Society of Australia)
The Postal Stationery Society Journal (Postal Stationery Society UK)
L'Entier Postal (Association des Collectionneurs d'Entiers Postaux, France)

Postal Stationery Collector

L'Intero Postale (Unione Filatelisti Interofili Italia)

Der Ganzsachensammler (*Schweizerischer Ganzsachen-Sammler Verein*)

Die Ganzsache (Münchener Verein und der ArGe Ganzsachen im BDPH)

Postal stationery (United Postal Stationery Society USA)

Postal stationery notes (British North America Philatelic Society, Postal Stationery Study Group)

Extracts of the contents of these journals are included in the pages of this publication, *Postal Stationery Collector*, a very useful guide for those interested in current journal articles.

Periodicals – General

There are thousands of philatelic periodicals and many of them include some material of interest to the stationery specialist. Access to this material is a major problem for a number of reasons: There are no comprehensive general indexes to current philatelic literature. Few of the most important titles are held outside the best philatelic society libraries making membership of one or more of these societies a prerequisite for seeing these materials. Detailed bibliographies are rare and only a few philatelic journals have had cumulative indexes prepared for them. To complicate matters, many philatelic authors provide very poor reference details making it hard to identify and check sources quoted. The growth of electronic systems is providing some hope for better access in the future with long runs of some important journals such as *The London Philatelist* now available on CD, and some Society web sites are giving access to recent issues of their bulletins via the Internet.

James Negus produced a worldwide index of the contents of new journal issues received at the National Philatelic Society library, which was published in serial form in *The Stamp Lover* for many years. The task proved too great in a number of ways and the index now covers journals published in the UK only, however long runs of *The Stamp Lover* are an essential component of every serious philatelic library because of these indexes. Another notable philatelic bibliographer, Brian Birch, collects journal indexes and has published lists of the indexes known to him at www.norbyhus.dk/fipliterature/cumulativeindexes.html and in *Philatelic Literature Review*, the journal of the American Philatelic Research Library.

If you can find a specialist society covering the country or theme of interest to you then you can be almost certain that the society journal will provide some coverage of both new and old stationery. For instance, *The Malayan Philatelist* has a regular column covering new issues including items of postal stationery. The *Sarawak Journal* has published some major studies of the postal stationery of the countries of British Borneo and the latest issue in August 2006 includes an article on British Postal Orders overprinted for North Borneo.

Handbooks – Single Country

A list of stationery specific handbooks is available on the Internet on the FIP Postal Stationery Commission web site at <http://www.postalstationery.org/html/books.html>. Typical examples for Australia are *The Aerogrammes of Australia and its Dependencies 1944-1980* (State College, Pa; American Philatelic Society) and *Western Australia: the Postal Stationery to 1914* (Perth: The Western Australia Study Group, 1982).

Collectors should also be aware that many handbooks of the “Stamps and Postal History” type will include useful information about stationery. Using my Asian examples again, *Kedah and Perlis, Their stamps and postal history 1887 – 1941* (Malaya Study Group, 1995) includes a 32 page chapter on postcards and registration envelopes; *The Stamps and Postal History of North Borneo, 2v*, (Sarawak Specialists Society, 1976-79) devotes 24 pages to postcards.

The Philatelic Trade

Scarce items of stationery do appear in illustrated form in many auction catalogues nowadays and with many catalogues available over the Internet it is possible to examine and bid on a much wider geographical basis than it once was. A good listing of forthcoming auctions and catalogue links is available through Charles Wiakala's site at <http://www.cwiakala.com/>.

A few dealers produce price lists for stationery and they advertise in the major stationery journals. Auction

February 2007

sites such as eBay at www.ebay.com with national sites in many countries also offer the opportunity to see and acquire new material.

Web Pages:

FIP Postal Stationery Commission <http://www.postalstationery.org/> is an excellent source of information for any stationery collector. It has listings of societies, journals, books and catalogues and the rules for exhibiting stationery at philatelic exhibitions.

The Postal Stationery Society has a Web page at <http://www.postalstationery.dk/PSS/>, and the United Postal Stationery Society has a site at <http://www.upss.org/> (but beware of the virus on the site at the time of preparing this article!).

Popular search engines produce large numbers of hits for Postal Stationery, eg the combined term produces 342,000 hits using Googol and the good are mixed with the bad and useless.

Another developing source is the Wikipedia, an encyclopedia produced by its users, http://en.wikipedia.org/wiki/Main_Page . Often a useful source, but also a place where experts should be making their own contributions.

Archives, Official Publications

Official publications of governments and post offices are useful sources of information , and the various philatelic bulletins issued by the post offices of the world may be the only source available for new issues.

Archives and government reports are the primary documents for those looking to do research into any philatelic topic and in many cases they are an untapped resource. Annual reports of Post Offices are likely to include details of stationery issued, perhaps sales numbers, printers, dates of issue and withdrawal etc. Government gazettes may include details of postage rates, announcements about new issues, requests for tender etc. Post Office archives may be available to interested person through Post Office Museums, or National Archives. The De La Rue and Perkins Bacon archives are available to interested parties and the archives of other printers may also be accessible through archival organizations.

Some archival bodies are making their indexes available on the Internet making it possible to identify sources prior to paying a visit to the archives. The Australian archives can be accessed at <http://www.naa.gov.au/>. For South Australia the home page for State Records is at the following address <http://www.archives.sa.gov.au/archives/index.html>. The British Postal Museum is at <http://www.postalheritage.org.uk/>. The US Postal Museum can be found at <http://www.postalmuseum.si.edu/blount/registration.html>

The move to the use of private printers in many countries make it more difficult to get access to printing information because few companies keep long-term archives and details of contracts are often designated "commercial - in confidence". Company annual reports sometimes have useful information, and don't forget that companies like to publish their own history and these sometimes have useful information in them.

It is important to get both governments and companies to recognize the need to keep archival material and make it accessible for historic research in areas such as philately.

RECENT COMMERCIALY USED POSTAL STATIONERY FROM AUSTRALIA TO UNUSUAL DESTINATIONS

Also available from the Pacific Islands and New Zealand.

Earlier material available as well.

Steven Zirinsky, PO Box 49, Ansonia Station, NY, NY 10023 USA. email: szirinsky@cs.com. fax 718 706 0619.

Payment can be made by cheque in any currency.

HISTORICAL NOTE ON AN EARLY LISTING OF AUSTRALIAN COMMONWEALTH POSTAL STATIONERY

Judy Kennett

In Issue No 21 of *The Australian Posthorn* was an obituary for John Landau (1904-1983), an enthusiastic collector of Commonwealth postal stationery. Part of the piece read as follows: 'In 1953 John Landau co-authored the first up-to-date listing of Australian postal stationery, published over several issues of *Australian Stamp Monthly*.' (1) I had no idea of the existence of this listing, and determined to investigate it. This article is the result. For convenience in the writing, I decided to use the shortened version of the journal title 'ASM', as it is familiar to so many Australian collectors.

An announcement about the publication of this check list 'in the near future' appeared in ASM for September 1, 1953 and read, in part 'the basis of the first part of this list will be that published in the Third (1928) Edition of A A Rosenblum's *Stamps of the Commonwealth of Australia*. It is hoped that readers possessing Australian postal stationery will assist the compilers with information, and the loan of specimens for examination. Especially useful will be used dated copies which will help to establish the periods of use of various items'. (2)

The publication of the checklist started in ASM for February 1, 1954. A short introduction noted again that the basis of the checklist was the 1911-1928 listing of A A Rosenblum. But it also acknowledged a debt to another list, that of 1928-1952 compiled by Mr D D Storms of the USA, and published recently in the *Bulletin of the Australian Commonwealth Specialists' Society of Great Britain*. (3) The numbering system used in the ASM listing was that adopted by Mr Storms, except for such changes as were found necessary to incorporate newly discovered material, and to bring the listing up to date.

Given the importance of the information provided in the listings of Mr Rosenblum and of Mr Storms, it is desirable to include some analysis of the data they recorded and the formats they adopted to present the data they considered essential for the description and identification of the Commonwealth postal stationery they had seen. These points will be dealt with under a separate heading for each contributor.

Analysis of sources used by compilers

1. A A Rosenblum *The Stamps of the Commonwealth of Australia* 3rd ed 1928

Mr Rosenblum introduces Chapter 23 of his book thus: 'it has been decided to give only a check list of postal stationery, the reader being referred to articles in the *Victorian Philatelic Record*, June 1924 to September 1924 for detailed particulars. The list given below includes all postal stationery known to have been officially issued by the Post Office' (4) He lists material issued up to 1928, and particularly states that he will not be dealing with any Printed-To-Private-Order stationery.

Section 1 deals with Australian Commonwealth envelopes. Rosenblum adopted a set order for data, namely Item Number, Colour and Value of Stamp, Design [of stamp], [Date] Issued, Size (in mm) and Colour of Paper. The list is set out in date order, but the key (first) item of each issue is a number. Sometimes sub-numbers eg. 4a, 4b were needed when there was a change in stamp die.

Section 2 deals with Registration Envelopes. The same order of data is followed, with a running number assigned to each item, but the decision was taken to set out the instructions on each example in full, and it was not possible to maintain the tabular format. Section 3 - Newspaper Wrappers is similarly set out, and it is noticeable that no dimensions are given, either width or length. In the same way, the instructions are quoted in each item, and the same applies in Section 4 Letter Cards and Section 5 Post Cards. There are no dimensions given in either section, but the perforations are given for the letter cards.

In the 4th edition of *The Stamps of the Commonwealth of Australia*, published in 1936, and called a

February 2007

Supplement to the 3rd edition, Rosenblum gives a single page update for all types of postal stationery issues to about 1931.

2. D D Storms *The Bulletin of the Australian Commonwealth Specialists' Society of Great Britain, July 1953.*

Mr Storms begins his article thus: 'I beg that members will accept this list in the spirit in which it is offered – merely as the beginnings of an attempt at listing the many Stationery items which have appeared during the last 20 years and which have been issued since Rosenblum's last revised list in the 4th edition of the Handbook.

I know perfectly well that this list is far from complete. It is only a listing of items which I myself know to exist – most of them from my own collection. Dates where given, except for the Airletters, are from the earliest cancels known to me, and are due for drastic revision in most cases. (5)

He retained Rosenblum's sections, but devised a system of 'temporary' (his own description) numbering, with letters used as prefixes, to replace Rosenblum's number used alone in each section. Thus we have Letter Card (LC), Post Card (PC), Wrappers (W), Envelopes (E), Envelopes – Registered (ER) and Air Letters (AL). He used a system of Roman numerals (I-XI) to represent the stamp design types, eg. 'I' stands for the 1911 full-face George V type. For envelopes he set up a classification system (A-D) to represent the measurements of the different flaps. This added an extra data element to the descriptions.

Mr Storms, being chiefly concerned with getting a listing started, kept his offering as a simple checklist. He was able to quote fuller dates of issue for some items of stationery, in some cases days and months as well as years. A new data element was introduced for Wrappers, namely widths. There was a completely new type of stationery (Air Letters), which had come into use only during World War 2. He listed the Air Letters known to him. His article contains references to items issued until late 1952.

There were two responses to Mr Storms's appeal for help, both published in **The Bulletin** October 1953. The first, from S Stobbs, used the layout devised by Mr Storms, but quoted the earliest dates of cancellations on his used examples in lieu of dates of issue. The second was from D R Taylor. He followed the Storms' layout, and added notes about the crests and the instructions on letter cards.

The Australian Stamp Monthly listing

J L and N H had these two sources from which to compile the ASM listing. The remainder of this article will attempt to show how they used information from these sources to develop their Postal Stationery Check-List. It will also mention the features that they developed to improve the format of the list, including the use of introductory tables to record detailed information, instead of including it in the listing proper. They had the benefit of being able to use illustrations of stamp types, headings and so on.

They offered an illustrated catalogue of all the impressed or embossed stamp types (designs) used up to that time on Australian postal stationery, and the categories of stationery on which each was used. The type numbers are in Roman numerals as Mr Storms had suggested. The illustrations are adequate, making allowance for the technology available at the time, and for the obvious toning on the newsprint quality of paper used to print the ASM.

The introduction to the section of the listing published in ASM of March 1, 1954 stated again that there is no claim that the list is complete or entirely accurate. This is for two reasons (a) because the information has been gathered from various sources, and (b) because, although many items listed have been viewed [by the compilers?], not all were found. The compilers are given as JL (John Landau?) and NH. Can any of our Melbourne-based members suggest who 'NH' might have been?

AUSTRALIAN POSTAL STATIONERY CHECK-LIST

FOR many years there has been little attention given to postal stationery in this country and the result is that no accurate and comprehensive checklist now exists. In an effort to overcome this deficiency, the "Australian Stamp Monthly" will, in the next few months, progressively list all items known to have been officially issued. No pretence will be made that the list is complete or accurate, especially as far as dates are concerned, and any authenticated additions or corrections sent in by readers will gladly be published. In this way, it is hoped, an accurate Postal Stationery Check-list will in due course eventuate.

Basis of the "A.S.M." check-list will be Mr. A. A. Rosenblum's 1911-1928 list as published in the 3rd Edition of his "Stamps of the Commonwealth of Australia," and the 1928-1932 list compiled by Mr. D. D. Storms (U.S.A.) and published recently in the Bulletin of the Australian Commonwealth Specialist Society of Great Britain. However, several items not recorded in either list are known, and there are many new dates to be incorporated. One of the difficulties confronting anyone who attempts to record postal stationery is the existence of a large number of items franked to private order. While the interest of these is not denied, it is considered that for the present time at least the "A.S.M." Check-list should confine itself to items officially issued for sale to the public.

In this issue, the "A.S.M." presents an illustrated catalogue of all types of impressed or embossed stamp designs used on Australian Postal Stationery. Numbering is in accordance with the tentative system adopted by Mr. Storms except for a minor amendment, and such additions as were necessary to bring it up to date. These type numbers will be used throughout the listing and readers who have items or information to impart should also use them.

CATALOGUE OF STAMP TYPES USED FOR AUSTRALIAN POSTAL STATIONERY

Type I—K.G.V full-face, in small oval: First used 1911. Used for—Letter-cards, Postcards.

Type II—Kangaroo and Map, as on postage stamp: First used 1913. Used for—Envelopes, Registered Envelopes, Letter-cards, Newswrappers, Postcards.

Type III—K.G.V profile, as on postage stamp: First used 1914. Die A: Used for—Envelopes, Registered Envelopes, Letter-cards, Newswrappers, Postcards. Die B: Used for—Letter-cards, Postcards.

Type IV—K.G.V. profile, in square and diamond, embossed: First used 1916. Used for Envelopes.

Type V—K.G.V. profile, in large oval, embossed: First used 1928.

Type VI—K.G.V. profile, in large oval, embossed: First used 1929. Used for—Letter-cards, Newswrappers, Post-cards.

Type VII—Queen, full-face, as 1928 postage stamp: First used 1940. Used for—Newswrappers, Post-cards.

Type VIII—Queen, full-face, as 1928 postage stamp: First used 1940. Used for—Newswrappers, Post-cards.

(Continued on page 75)

POSTAL STATIONERY CHECK-LIST PART 5 — AIRLETTERS

AIRLETTERS and Aerogrammes are the newest form of Postal Stationery, having come into popular use only in the later years of World War II. There are therefore not very many varieties, but some are already extremely scarce.

The first Air Letters were for the use of troops overseas, and these are listed first under the heading "Military Use".

(Military) Airletters: Size—approx. 11 in. x 7 in. with flap about 5 in. x 3 in. of folding them differ and they are 1 and 2 fold in half vertically, then in half again horizontally.

The first ones sold for civilian use after the airgraph service ceased were Military Use forms with the restrictive clause blue-pencilled out.

AIR LETTER HEADING TYPES

1. Blue circular label at upper left, unframed. "BY AIR MAIL" in colours semi-serif capitals. Rectangle for stamp at upper right. Between label and stamp space the words, in two lines, "AIR MAIL/LETTER CARD" printed in serif capitals. Below, in two lines, "If anything is enclosed this card will be sent by ordinary mail" printed in small plain capitals.

2. Blue circular label at upper left, enclosed in single-line frame. "BY AIR MAIL" in colourless serif capitals. Above label "To open out of top" in italics. Stamp impression at upper right. Between label and stamp the words, in one line, enclosed in brackets, "For letters to members of Forces Overseas" printed in italics. Five address lines in right hand.

On reverse— "If anything is enclosed letter will be sent by ordinary mail" printed horizontally in italics. "Sender's name and address" in three address lines, printed vertically of right.

3. As Type 2 but without "Forces Overseas" enclosure.

4. Blue circular label as in Type 2, but without "To open out of top" in very small type. Stamps as in Type 2.

5. "AIRLETTER" now in one word. Four address lines at right, spaced wider.

On reverse— "If anything is enclosed, letter will be sent by ordinary mail" printed horizontally, in small bold type.

6. As Type 4 but with "AEROGARAME" instead of "AIRLETTER".

7. As Type 5 but with "AEROGARAME" in narrower type and enclosed in thin frame.

1911 Head Type 1. Fold B. Description in stamp space reads "Affix 3d./Stamp/Here".

ML.1. No value—dark blue on white. Note: Issued to Australian troops in Egypt in mid-1911. Used with 3d. blue K.G. VI Australian stamps.

1911 Head Type 1. Fold B. Description in stamp space reads "Affix 1/2 Cent/Malayan Stamp/Here". Red lines, between centre circles, "POSTAGE PAID—JORDAN" with "12 CENTS" in the centre.

ML.2. 12 cents red—dark blue on white. Note: Issued to Australian troops stationed in Malaya for postage free Christmas Mail.

1912 Head Type 1. Fold B. Description in stamp space reads "Affix/Stamp/Here". Red overprint on this reads, inside circle, "POSTAGE 1d./PAID".

ML.3. 1d. red—blue on white. Note: Issued to Australian troops stationed in New Guinea for postage free mail.

1914 Type IXb. Head Type 2. Fold A. ML.4. 7d. blue—lemmon.

GENERAL USE.

1914 Type IXb. Head Type 2. Fold A. AL.1. 7d. blue—lemmon. Note: AL.1 is identical with ML.4 except that when sold for civilian use the "Forces Only" inscription was first scored out with blue pencil.

1914 Type IXb. Head Type 2. Fold A. AL.2. 7d. blue—lemmon.

1915 Type IXb. Head Type 4. Fold B. AL.3. 7d. blue—buff.

1915 Type IXb. Head Type 4. Fold B. AL.4. 7d. blue—grey.

1950 Type IXb. Head Type 4. Fold B. AL.5. 7d. blue—pale blue.

AL.6. 7d. dark blue—light blue. Note: Following postal rate increases in 1952, AL.6 was for a time sold with 3d. adhesive stamp already affixed.

1952 Type IXb. Head Type 4. Fold B. AL.7. 10d. on 7d. red and dark blue—light blue.

1952 Type XV. Head Type 4. Fold B. AL.8. 10d. blue—light blue.

1953 Type XVI. Head Type 5. Fold B. AL.9. 10d. blue—light blue.

1954 Type XVI. Head Type 6. Fold B. AL.10. 10d. red—light blue.

OFFICIAL USE.

1952 As Head Type 4. Fold B. Background embossed "POSTAGE PAID" attached stamp impression "ON HIS MAJESTY'S SERVICE" above "AIRLETTER" OAL.1. No value, blue—light blue.

PART 6 — MILITARY ENVELOPES

FM.2. 1d. red—white. Each long end of stationery. 4 lines for numbering, etc. Head "Australian Imperial Force Ahead" in two lines. The words "Addition" and "only" enclosed in small frame.

FM.3. 1d. red—white. Each long end of stationery. 5 lines for numbering, etc. then "A.I.F. Ahead". Footnote on last.

1916 Type III. FM.4. 1d. red—white. Each long end of stationery. 5 lines for numbering, etc. then "A.I.F. Ahead". Footnote on last.

Note: "Military Envelopes" were issued for a period during World War I. They were sold at post-offices and were intended for the use of people writing to Australian troops on active service. All measure 105 mm. x 99 mm.

EM.1. 1d. red—white. Each long end of stationery. 6 lines for numbering, etc., followed by "Australian Imperial Force Ahead" in small frame, and "Addition—Above particulars are sufficient. Additions may delay delivery."

There were two amendments to the catalogue of stamp types published in the previous month, then the listing for Part 1 - Stamped Envelopes began. Information given for the envelopes followed the format: year of issue, type, ie. stamp design, dimensions (in millimeters), a number, eg 'E.1', (from the Storms' system), then the denomination in pence and the colour, written thus 'red - white', which denotes a red design on white paper.

Part 2 in ASM May 1, 1954 dealt with Registered Envelopes, and with the checklist is an extensive 'Catalogue of Texts Used', where 'texts' are the printed headings, notices and instructions used on the various envelopes. The texts are shown in the checklist by 'T' followed by a number in Arabic numerals, eg. 'T.1'. Separate texts are given for the faces of the registered envelopes and for the backs. The item number takes the form 'ER.2'. The setting out and format broadly follow that laid out in ASM March 1, 1954.

Part 3 deals with Post Cards and appeared in ASM June 1, 1954. Here the checklist is accompanied by a list of Postcard Heading Types (designated 'H.T.' and with five types), a list of postcard inscription types (designated by 'IT' and with five types) plus illustrations of six of the eight Portrait designs used on the 1911 'Coronation' postcards. Each postcard item number is prefixed by 'PC.', and there are brief descriptions of the colours of the fronts and the backs of the cards, where these differ.

In Part 4 - Lettercards the information supplied becomes more complex. This was published in ASM July 1, 1954. The basic format and information remain the same as that used in ASM March 1, but with the addition of Types of Headings, Texts and Corners, and the perforations used. In some cases it was found necessary to note where the outside colour of the lettercard was different from that on the inside. The illustrated lettercards of 1911-1924 are concisely described in a note, and mention is made of the military and naval scenes used in 1915. Each lettercard item number is prefixed by 'LC.'

Part 5 - Newswrappers commences with the following: 'Newswrappers of the Commonwealth of Australia are, in some respects, more difficult to trace and record than other forms of postal stationery. Comparatively few seem to have been preserved in mint condition and by their very nature, they are far less likely to survive after use. Consequently, although the Check-list is believed to be reasonably complete, it is specially subject to correction in the matter of dates.' (6)

This section appeared in ASM September 2, 1954. The checklist was accompanied by notes on the sizes of wrappers and on the papers used, plus a listing of six different Newswrapper Text Types. Each item number is prefixed by 'NW.'

The final sections, both short, were published in ASM November 1, 1954. Part 5 dealt with Airletters (it appears that this Part number was used twice, in error). There is a note stating that airletters and aerogrammes are the newest form of postal stationery, having come into popular use only during World War 2. Besides the checklist, there are notes on Sizes and Folds (Fold A and Fold B are described), and also a list of Airletter Heading Types. There are two different airletter types, those for military use, issued 1941-1944 with numbers prefixed by 'ML.', and those for general use, issued from 1944 onwards. The latter have their numbers prefixed by 'AL.'. Part 6 of the checklist dealt with the Military Envelopes issued during World War 1 and intended for the use of people writing to Australian troops on active service.

Conclusion

This is a very good attempt at producing a logically arranged checklist of Australian Commonwealth postal stationery issued up to that time. The compilers were keenly aware that they could not make any claim at completeness, and that they had not been able to view all the items listed. They were aware that the year of issue was all they could supply at that time; it seems that the Australian Post Office had not been in the habit of announcing the issue of postal stationery. Hence the request to view postally used items that would give some ideas about dates of issue and of withdrawal. There was also free acknowledgement of the debt owed by the compilers to the listings of A. A. Rosenblum and the American collector D. D. Storms.

It is interesting to see how the compilers 'managed' the data at their disposal. Their adoption of a set form for laying out their data, as shown in Part 1 – Stamped Envelopes, which can be varied for other types of stationery by having other data elements added, has a unifying effect on the checklist as a whole. The use of introductory notes and tables, instead of incorporating detailed information in the listings, is an excellent idea. It seems a pity that this effort has dropped out of sight of Australian postal stationery collectors, through the passing of the years. It does deserve to be remembered as a useful contribution on the rocky road to a comprehensive catalogue of Australian Commonwealth postal stationery.

Acknowledgements

My thanks go to Derek Brennan for access to original copies of both *The Australian Posthorn* and *The Australian Stamp Monthly*. Thank you also to David McNamee of the USA who looked for information about D D Storms, but could not find any information about this collector. David was able to locate a complete copy of the Storms' article in the SAS / Oceania Library. And thank you to David Collyer, who found a copy of this article in the Philas Library in Sydney. Sadly, it was not complete – the last page was missing.

References

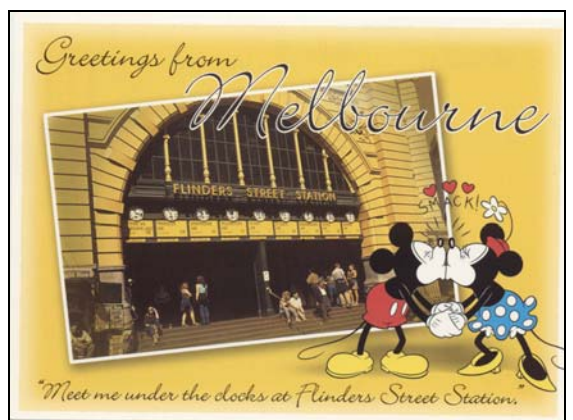
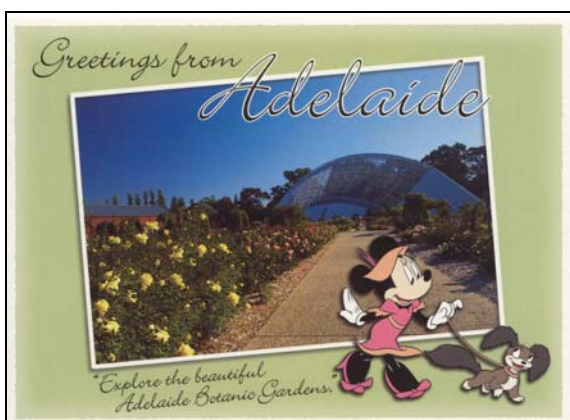
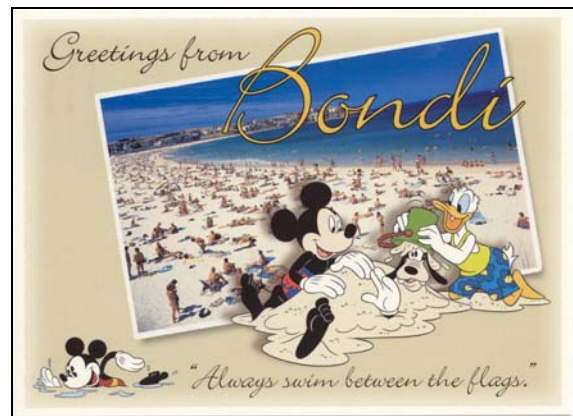
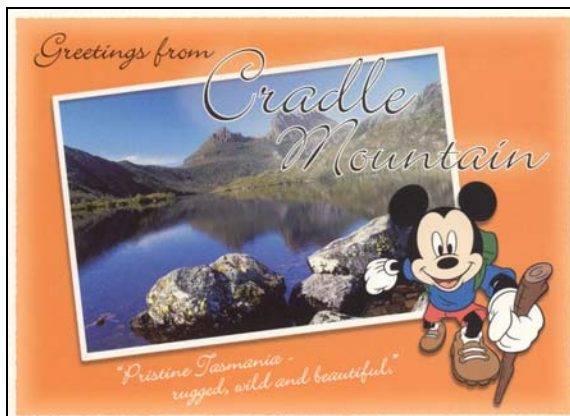
1. Jansen, Andy, 'John Landau 1904-1983', *The Australian Posthorn* Vol. 5 No 5, Issue No 21, p. 6, Bulletin of the Postal Stationery and Postal History Society of Australia, published in Adelaide, South Australia, December 1983.
2. *Australian Stamp Monthly*, published by Horticultural Press, Melbourne, Victoria, Vol. 24, September 1, 1953, p. 463.
3. This society is the predecessor of the well-known British Society of Australian Philately (BSAP).
4. Rosenblum, A A, *The Stamps of the Commonwealth of Australia*, 3rd ed. The Melbourne Philatelic Club, Melbourne, Australia, 1928.
5. Storms, D D, 'Item 165. Australian Postal Stationery', *The Bulletin of The Australian Commonwealth Specialists' Society of Great Britain*, published in UK, July 1953.
6. *Australian Stamp Monthly*, Horticultural Press, Vol. 25, September 2, 1954, p. 523.

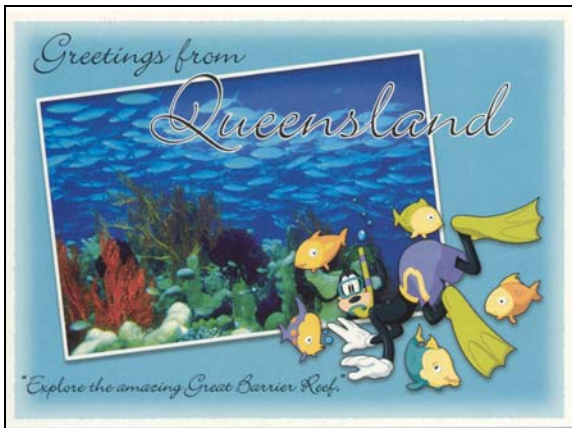
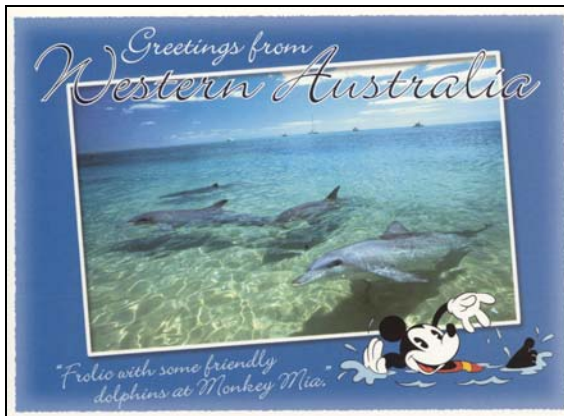
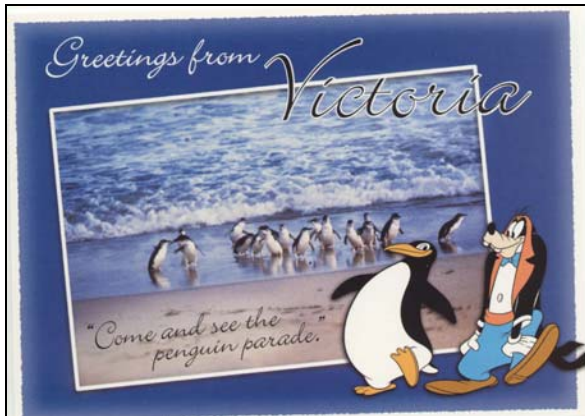
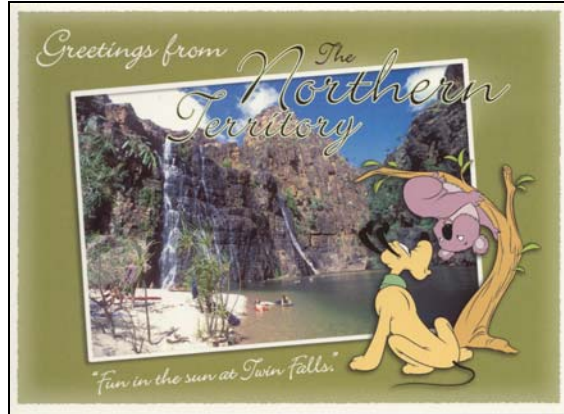
Disney Tourist Postcards

Martin Walker reported "I have just been shown some new postcards due for release on November 1. There looks to be about ten of them. One for each state plus a few extras like Bondi Beach. They consist of a set of scenic views with the view inset in a frame with Disney characters in holiday poses superimposed on the cards."

Richard Beckon confirmed the issue of the "Greetings from" prepaid postcards featuring scenes and Disney characters comprising 9 x \$1.20 cards:

	Retail Product Code
Greetings from Queensland	34658
Greetings from Bondi	34659
Greetings from Western Australia	34660
Greetings from Melbourne	34661
Greetings from Sydney	34662
Greetings from Cradle Mountain	34663
Greetings from Victoria	34664
Greetings from Adelaide	34665
Greetings from Northern Territory	34666





Stationery Pack Pre-Paid Envelopes

Continuing with their Disney theme, Australia Post also issued on 1 November 2006 a \$12.95 pack of 12 Christmas cards featuring Disney themes, and including 12 x (45c) Post Paid envelopes depicting Mickey Mouse. About the same time two other stationery packs were issued, one containing envelopes depicting a lighthouse and the other envelopes depicting whales.



LISTING OF AUSTRALIAN NON-DENOMINATED POSTAL STATIONERY

Ian McMahon

Postcards

24 October 2006 50 Years of Television
Maximum cards

- (-) Graham Kennedy
- (-) Neighbours
- (-) Homicide
- (-) Dateline
- (-) Kath and Kim

(Set price: \$6.25)

1 November 2006 50 Years on: Melbourne
Olympics 1956
Maximum cards

- (-) Melbourne over the Yarra River
- (-) Rowing on the Yarra River
- (-) Oriental Hotel
- (-) Looking west along Collins St

(Set price: \$6)

1 November 2006 Christmas

Maximum cards

- (-) Virgin and Child
- (-) One of the three Magi
- (-) Shepherd boy

(Set price: \$4.25)

1 November 2006 'Greetings from' Postcards

- (\$1.20) Queensland
- (\$1.20) Bondi
- (\$1.20) Western Australia
- (\$1.20) Melbourne
- (\$1.20) Sydney
- (\$1.20) Cradle Mountain
- (\$1.20) Victoria
- (\$1.20) Adelaide
- (\$1.20) Northern Territory

9 January 2007 Lunar New Year

(\$1.20) Year of the Pig

Envelopes

1 November 2006 Stationery Pack Envelopes

- (\$0.60) Disney Christmas
- (\$0.60) Lighthouse
- (\$0.60) Whales

Note: The Christmas envelope was issued in a pack of 12 Disney-themed Christmas cards and 12 envelopes prepaying the Christmas card rate for \$12.95. The other envelopes were also issued in stationery packs. Single envelopes were available from the Philatelic Bureau.

9 January 2007 Lunar New Year

- (\$0.60) Domestic
- (\$2.00) International

Aerogrammes

1 November 2006 Christmas

- (\$1.00) Virgin

Parcel Satchels



2006 With text 'Aviation Security and Dangerous Goods Declaration'

- (\$5) 500gm
- (\$8.80) 3kg



THE "BIG THREE" OF NEWSPAPER WRAPPERS OF VICTORIA: JOHN K. COURTIS APPENDIX: CENSUS OF 136 VICTORIA WRAPPERS BEARING POST OFFICE INDICIA

H&G	Stieg	Basic description	Postmark & date	Address details
4	5	1880 QV 1/4d rose bantam, no borders (as above uprated 1/4d bantam adhesive)	cds Geelong 27 AP (19)15 Victoria	Mr. Alfred Berder, Moudou, Switzerland
4	5		duplex Melbourne 13V NO 17 84 & 6-bar Victoria	YMCA, Monthly Bulletin, University of Michigan, USA
5	6	1880 QV 1d green	duplex Melbourne 1K MY 29 83 & 6-bar Victoria	Mrs. Hill, Elderbank, Ceres
5	6	As above	duplex Melbourne 27 AP 5 85 & 6-bar Victoria	Mr. Hill, Elderbank, Ceres
6	7	1885 QV HALF-PENNY pink	open M9 within 3-horizontal bars above/below	Prof. Holloway, 533 Oxford Street, London, UK
7	8	1885 1d yellow-green	duplex Melbourne 15F 14 07 85 & 6-bar Victoria	per Ballarrat S. S. Mr T. Everley, Palmerston Road, Peterborough, England
11	10	1885 QV HALF-PENNY rose/grey	open duplex East Melbourne ? 86 Vic. & MCC(CC)/14(14)	Messrs. E. A. Clough & Co., Collins Street, Melbourne
11	10	as above salmon on white	open duplex Ceres MR 9 86 Victoria & 95 within 3-horizontal bars	Mrs. W. H. Hill, St. Andrew Street, Middle Brighton
12	11	1885 ONE PENNY green, unwmk	above/below & 2 side bars	
12	11	As above & with double borders	open cds East Melbourne SE 26 94 Vic	W. Brettschneider, 312 Flinders Street, Melbourne
13	14	1886 HALF-PENNY grey violet with border	open duplex Nagambie MR 11 87 Victoria & 712 within 3-horizontal bars	W. Brettschneider, 312 Flinders Street, Melbourne
13	14	as above (uprated 1/4d red cut-out E15)	above/below	Mr. T. Holloway, 78 New Oxford Street, London, W. C.
14	15	1886 QV ONE PENNY yellow-green, borders	pair open cds Shepparton NO 18 87 Victoria	Prof Holloway, New Oxford St.
14	15	As above	open duplex Buninyong AU 14 89 Victoria & 23 within 3-horizontal bars	Messrs. Clarke Son & Platte, 85 Gracechurch Street, EC London
14	15	As above	above/below	
14	15	As above	open duplex Buninyong AP 14 90 Victoria & 23 within 3-horizontal bars	Messrs. Clarke Son & Platte, 85 Gracechurch Street, EC London
15	16	1887 QV HALF-PENNY pink, borders	oval belt & buckle Post and Telegram Office Essendon 09 3 1890	Herr A. Y. Friedman, 265 Richardson Str., Middle Park
15	16	As above (uprated stamp missing)	numeral 31 within 3-horizontal bars above/below & 2 side bars (31 = Colac)	Gordon & Gotch, Melbourne
15	16		open duplex Charlton A DE 6 90 Victoria & 86 within 3-horizontal bars	Messrs. Clarke Son & Platte, 85 Gracechurch St., London
15	16		above/below	
15	16		oval belt & buckle Post and Telegram Office Kerang FE 24 1893	Arb(?)ward, Gordon & Gotch, Melbourne
15	16	Uprated 1/4d red adhesive	pair open duplex Warragul JL 30 88 Victoria & 985 within 3-horizontal bars above/below	Professor Holloway, Oxford St., London, England
15	16	Uprated 1/4d red cut-out	open duplex Maffra JA 13 90 Victoria & (pair) 477 within 3-horizontal bars above/below	Thos Holloway Esq., 78 New Oxford Street, London, England
15	16	Uprated 1/4d red cut-out showing border	open duplex Mortlake AP 22 92 Victoria & 249 within 3-horizontal bars above/below	Clarke Son & Platte, 85 Gracechurch St., London (EC crossed out)
15	16	Uprated 1/4d red adhesive	pair cds Sandhurst 4 A JA 22 93 (Bendigo Advertiser Newspaper handstamp)	Clarke Son & Platte, 85 Gracechurch St., London EC
15	16	Uprated 1/4d red adhesive	open duplex Hamilton ? 7 91 Victoria & 46 within 3-horizontal bars above/below	Messrs. Gordon & Gotch, Holborn Viaduct, London
15	16	Uprated 1/4d red adhesive	pair numeral ?91 within 3-horizontal bars above/below (no other postmark shown)	Prof Holloway, 533 Oxford St., London
15	16	Uprated 1/4d red cut-out	pair M9 within 3-horizontal bars above/below; Boxed "Found in WCDO without contents"; receiving cds London JA 12 91	Prof Holloway, 533 Oxford St., London EC (blue crayon 20?)
15	16		pair cds ? SE 15 90	Prof Holloway 78 New Oxford St, London WC

Postal Stationery Collector

15	16			duplex cds Melbourne 11A OC 9 90 & 6-bar Victoria	Messrs Cohn Nelson & Co., 17 Queen St., Melbourne & Box above
15	16			open duplex Maffra JE 5 90 Victoria & 477 within 3-horizontal bars above/below	Thos Holloway Esq., 78 New Oxford Street, London, England
15	16		(uprated stamp missing lower left)	open duplex Maffra JE 9 91 Victoria & 477 within 3-horizontal bars above/below	Thos Holloway Esq., 78 New Oxford Street, London, EC, England
15	16		(badly foxed)	open duplex Wedderburn JE 5 91 Victoria & 120 within 3-horizontal bars above/below	Messrs. Gordon & Gotch, Collins St., Melbourne
15	16			cds Melbourne K 726 91 & 6-bar Victoria	Oskar Miller Esq., Hock Kirch, Victoria
15	16			cds Melbourne 12A MY 28 91 & 6-bar Victoria	Prof Holloway c/- Gordon & Gotch, City
15	16		(no border on left)	open duplex Euroa AP 19 92 Victoria & 41 within 3-horizontal bars above/below & 1 side bar	Gordon & Gotch, Melbourne (typed)
15	16			open duplex Beechwood SE 7 92 Vic & 9 within 3-horizontal bars above/below & 1 closed side bar	Gordon & Gotch, Melbourne
15	16		(torn bottom right)	open duplex Dunolly FE 16 92 Victoria & 239 within 3-horizontal bars above/below	General Press Agency 60 to 70 Queen St., Melbourne
15	16			pair cds Up? NO 10 92 Victoria	Messrs Gordon & Gotch, News Agents, Queen St., Melb
15	16			open cds Warrambool SE 17 92 Vic	Gordon & Gotch, Melbourne
15	16			open duplex Mortlake SE 21 92 Victoria & 249 within 3-horizontal bars above/below	General Press Agency, Melbourne
15	16			numeral cancel 760 within 3-horiz bars above/below (no date)	Messrs Gordon & Gotch, Melbourne
15	16			cds Melbourne MR 20 90 & 6-bar Victoria	Mr. Hill, Elderbank, Ceres (typed)
15	16		(no border on left hand side)	open duplex Colac SE 12 93 Victoria & 31 within 3-horizontal bars above/below	Prof. Holloway c/ Gordon & Gotch Melbourne
15	16			open duplex B? Victoria MY 9 95 & numeral ?	Gordon & Gotch, Melbourne
15	16			cds Sandhurst 4A JA 31 90 (Bendigo Advertiser (Newspaper Only) handstamp	Prof Holloway 78 New Oxford St, London WC
15	16			numeral 31 within 3-horizontal bars above/below (stamp missing no date)	Messrs Clarke Son & Platt, 85 Gracechurch St., London EC,
16	17		1890 QV ONE PENNY red brown	cds Melbourne A SE 28 91 & 6-bar Victoria	England
16	17			cds missed completely & 6-bar Victoria (no date)	R C Anderson Esq., Indemnity Fire Marine Ins., Collins St., Melbourne
16a	17		orange brown	cds Melbourne 21A MR 6 91 & 6-bar Victoria	Mr O. Stanger, c/- Bk. of NSW, Adelaide
17	18		1895 QV HALF-PENNY yellow orange	open duplex Mooropna SE 24 95 Victoria & 805 within 3-horizontal bars above/below	Mr Ins Edmund, Princes St., Melbourne
17	18			cds Melbourne 15C OC 10 95 & 6-bar Victoria	"Chipman" c/ Gordon & Gotch, Melbourne
17	18		Uprated 1/2d & 1d adhesives	three cds Melbourne MY 4 96	Russell Esq., Barrapoort
17	18		Uprated 1/2d	open duplex Ballarat JY 18 99 Victoria & 5 within 3-horizontal bars above/below	Per Vienna, Herr Huttendirector, Ludwig Neuman, Gleiwitz, Germany
17	18		Uprated 1/2d	pair cds Ballarat 2B DE 29 94 (Ballarat Advertiser purple handstamp)	Name & address deliberately defaced in squiggly ink, Germany
17	18		Uprated 1/2d	pair numeral 57 within 3-horizontal bars above/below & 3 side bars (57 = Kyneton)	Messrs Clarke Son & Platt, 85 Gracechurch St., London EC
17	18		Uprated 1/2d	pair M.O. & S.B. DE 14 98 and double-ring Melbourne 10.30AM JY 29 98 NPB	Clarke Son & Platt, 85 Gracechurch St., London EC, Englnd (typed)
17	18		Uprated 1/2d	open duplex Kyneton DE 7 94 (?) Victoria & 57 within 3-horizontal bars above/below	Milo Steel, c/o Mrs Elder, Ellerton, Grange South, Edinburgh, Scotland
17	18		Uprated 1/2d		Mr. F. Algar, 11 & 12 Clementis Lane, Lombard Street, London

17	18		open duplex Natimuk JE 4 97 Victoria & 945 within 3-horizontal bars above/below	Mr. F. Algar, 11 & 12 Clemens Lane, Lombard Street, London (surname & street deliberately cut from wrapper)
17	18		open duplex Mooroompa SE 24 99 Victoria & 805 within 3-horizontal bars above/below	"Chipman" c/o Gordon & Gotch, Melbourne
17	18		open cds Beaufort NO 7 96 Victoria	Messrs Gordon & Gotch, Melbourne
17	18		pair vertical cds Bendigo 1A NO 17 96	Messrs Bates Hendy & Co., 37 Walbrook St., London, EC
17	18		open duplex Cobden JE 30 97 Victoria & 5(87) within 3-horizontal bars above/below	Messrs Gordon & Gotch, Queen St., Melbourne
17	18		open cds Mortlake SE 18 97 Victoria	"Waterbury" c/o Messrs Gordon & Gotch Ltd., Melbourne
17	18		open cds Corryong JN 5 95 Victoria	"Waterbury" c/o Messrs Gordon & Gotch., Melbourne
17	18		closed duplex Geelong C SE 23 98 & 2 within 3-horizontal bars above/below & 1 side bar	C. M. Poynter, Bank of Australia, Geelong
17	18		closed cds Melbourne 10 0 SE 13 98	G. A. Gibbs Esq., Sw M&M B of Works, Melb.
17	18		closed duplex Leongatha AU 19 98 & 1592 within 3-horizontal bars above/below	Mr. Kelburne Edge, 139 Elizabeth St., Melbourne (A Dept in blue crayon)
17	18		closed duplex Casterton (date unreadable) & 28 within 3-horizontal bars above/below	Reuter's Telegram Agency, Collins ST., Melbourne (typed)
17	18		pair cds Benalla FE 15 95 Victoria	Messrs Gordon & Gotch, Melbourne
17	18		cds Bendigo 1A MY 11 95 (Bendigo Advertiser purple handstamp)	Mr. G. S. Aldridge, Royal Exchange, King William St., Adelaide, Sth Aust.
17	18		open cds Gembrook N AU 17 98 Victoria	Mechanics Institute, West Ballarat
17	18		open duplex Violet Town SE 11 96 Victoria & 243 within 3-horizontal bars above/below	Gordon & Gotch, Melbourne
17	18		cds Melbourne 11A AU 18 98	Hon. Robert Ried, Flinders Lane, City
17	18		cds Melbourne 9L SE 2 97	"Chipman", c/o Messrs Gordon & Gotch, Melb
17	18		cds Bendigo 4A OC 13 94 (Bendigo Advertiser in purple handstamp)	SA Advertiser Adelaide
17	18		open duplex unreadable ? 95 Victoria & ? within 3-horizontal bars above/below	Agric. Editor, Leader, Melbourne
17	18		open cds Gordon's JY ? 95 Victoria	Mechanics, Ballarat
17	18		open duplex Bright MR 27 96 Victoria & 279 within 3-horizontal bars above/below	"Waterbury" c/o Gordon & Gotch., Queen St., Melbourne
17	18		open duplex Dumolly DE 6 95 Victoria & 239 within 3-horizontal bars above/below	Free Library, Ballarat
17	18		open duplex Maffra AP 16 95 Victoria & 477 within 3-horizontal bars above/below	Gordon & Gotch, Melbourne
17	18		closed duplex Melbourne 10 MR 28 98 & Victoria within 3-horizontal bars above/below	Henry Austin Esq., 29 Blight St., Sydney, NSW
17	18		open cds Lancefield OC 11 95 Victoria	Messrs Gordon & Gotch, Queen St., Melbourne
17	18		open duplex Donald NO 9 94 Victoria & 303 within 3-horizontal bars above/below	Messrs Gordon & Gotch, Melbourne (typed)
17	18		open duplex Lilydale DE 18 98 Victoria & 314 within 3-horizontal bars above/below	M. Chipman, c/o Gordon & Gotch, Queen St., Melbourne
17	18		numeral cancel 98 within 3-horizontal bars above/below & 1 side bar (98 = Malmsbury)	Gordon & Gotch, Melbourne (typed) (something typed beneath)
18	19	1895 QV ONE PENNY blue	closed duplex Melbourne 10 M AU 16 99 & Victoria within 3-horizontal bars above/below	Rev. R. De Haas, c/o Imperial, German Consulate, Brisbane (purple receiving Consular handstamp Brisbane)
18	19		cds Melbourne 1AY OC 21 96 (purple handstamp on flap Lt Collins St., Melbourne, Publishers)	The Editor, Express, Adelaide, SA.

Postal Stationery Collector

18	19		cds Melbourne 12 0 JA 8 98 (merchant's stamp on flap W m Ackland, Stamp Importer)	Mr. L. St. Martin, Ruo V. Hugo 15, a Auch, (Gers), France
18	19		cds Melbourne IAF NO 10 96	Professor Dr Liebisch, Gottingen, Germany.
18	19		open duplex Coleraine DE 24 98 Victoria & 32 within 3-horizontal bars above/below	Messrs Clarke Son & Platte, 85 Gracechurch St., London, England
18	19		open duplex Walhalla AP 12 99 Victoria & 481 within 3-horizontal bars above/below	Messrs Clarke Son & Platte, 85 Gracechurch St., London, England
18	19		open duplex Mortlake JY 15 98 Victoria & 249 within 3-horizontal bars above/below	Messrs Clarke Son & Platt, 85 Gracechurch St., London
18	19		cds Melbourne 2C O JY 13 95	F. Henke, Hohesrt 66, Dortmund, Germany
18	19		open duplex Walhalla MY 20 98 Victoria & 48(1) within 3-horizontal bars above/below	Messrs Clarke Son & Platte, 85 Gracechurch St., London, England
18	19		open duplex Gordon's JY 15 98 Victoria & 210 within 3-horizontal bars above/below	Clarke Son & Platte, Advertising Agency, 85 Gracechurch St., London
18	19		closed duplex Walhalla DE 9 98 Victoria & 481 within 3-horizontal bars above/below	Messrs Clarke Son & Platte, 85 Gracechurch St., London, England
18	19		open duplex Buninyong AU 26 98 Victoria & 23 within 3-horizontal bars above/below	Clarke Son & Platte, 85 Gracechurch St., London EC
18	19		open duplex Coleraine DE 9 98 Victoria & 32 within 3-horizontal bars above/below	Messrs Clarke Son & Platte, 85 Gracechurch St., London, England
18	19		pair open duplex Coleraine JA 6 98 Victoria & 32 within 3-horizontal bars above/below	Messrs Clarke Son & Platte, 85 Gracechurch St., London, England
18	19		open duplex Mortlake DE 13 98 Victoria & 249 within 3-horizontal bars above/below	Messrs Clarke Son & Platt, 85 Gracechurch St., London
19	20		1899 QV HALF PENNY emerald open duplex Numurkah DE 15 99 Victoria & M91 within 3-horizontal bars above/below	Messrs Ju Cooper & Sons, Elizabeth St., Melbourne
19	20		open duplex Hopetoun SE 23 03 Victoria & 187(5) within 3-horizontal bars above/below	Country Press Association, 1 & 4 Elizabeth Str., Melbourne
19	20		closed duplex Hamilton B JA 5 01 Victoria & 46 within 3-horizontal bars above/below	Country Press Association, Melbourne (typed)
19	20		closed duplex Stawell (month 03) Victoria & 256 within 3-horizontal bars above/below	Country Press Association, 124 William St., Melbourne (address label)
19	20		open duplex Newstead DE 5 00 Victoria & 132 within 3-horizontal bars above/below	Country Press, William St., Melbourne
19	20		open duplex Hamilton JA ? 00 Victoria & 46 within 3-horizontal bars above/below	Mr. L. Kurtz, Hochkirch
19	20		pair open cds Yarrowonga M.O. & S.B. AP 5 00	Mess. Haydock & Co., Box 731, New York, USA
20	21		Closed cds Melbourne JA 31 01 (book post in manuscript top left	R. A. MacDonald, Bank of NSW, Southern Branch, Sydney
21	22		double-ring Melbourne AM 4.30 28 6 02 & identifier 27	Mr. Harrington, c/o Cameron Esq., Ormiston via Brisbane (address label)
21	22		cds Melbourne JA 31 01	Mr. R. A. MacDonald, St. Patricks College, Manly,
21	22		pair cds Sale A JY 5 01 Victoria	Yarrain Club, Yarrain via Dandenong
21	22		open cds Kilmore JY 12 01 Victoria	Messrs Bates, Hendy & Co., 81 Cameron Street, London
21	22		cds Lilydale MY 4 01 Victoria (white paper)	Gordon & Gotch, Pitt St., Sydney
23b	24c		cds Melbourne JA 28 02 (brown paper - possibly philatelicly-inspired)	Felix Weissbach, Glauchau (Saxony), Germany
23	24		double-circle duplex Bendigo 5.30 U 3 01 & identifier 3 & numeral 4 within 3-horizontal bars above/below	Mr. T. W. Biggs, Corbien, Salisbury Rd, Mosely, Birmingham

24	23	1901 QV 1d rose	pair cds Inverleigh indistinct 1914? Vic. (uprated pair 1d kangaroos)	Mr. T. Eveleigh, 178 Palmerston Rd, "Woodstone", Peterborough, England
24	23	(added GB 2d postage due adhesive)	pair cds Inverleigh indistinct 1914? Vic. (postage due markings T/10c in hexagon), (uprated single 1d kangaroo)	Mr. T. Eveleigh, 178 Palmerston Road, "Woodstone", Peterborough, England
24	23		double-ring Melbourne PM 3.45 11 8 02 & identifier 18 (backstamped Surrey Hills)	Miss M. Curlisham, 269 Liverpool Rd., Surrey Hills, Sydney, NSW, readdressed Ashfield
24	23		open duplex South Yarra FE 8 03 Victoria & numeral 200 within 3-horizontal bars above/below	R. D'A Morrell Esq., Luungalla Estate, Baudarawella, Ceylon
24	23		numeral cancel M9 within 3-horizontal bars above/below (M9= Pannoo Milloo "Prairie")	Professor Holloway, 533 Oxford Street, London, England
25	25	1904 QV HALF PENNY emerald bantam, thick border	open duplex South Melbourne 5 (?) 19 03 Vic & numeral (148) within 3-horizontal bars above/below	Messrs Fletcher Chester & Co., Elizabeth St., City
25	25		cds Melbourne PM 5 7-6-04 & identifier 21	Mr Chas Lovett, 121 Nicholson St., Footscray
25	25		duplex Hamilton 4 ? 04 & numeral 4(6) within 3-horizontal bars above/below	Mr. L. Kurtz, Hochkirch
25	25		cds Echuca AU 05 Victoria	Mr Alec Kilgour, Waikouaiti, Otago, New Zealand (S.S. Wimmera via Sydney)
25	25	Uprated 1/2d green bantam	open duplex Kyneton AU 17 06 (?) Victoria & numeral 57 within 3-horizontal bars above/below	Miss L. Stourey, 3 & 4 Leonard Place, Kensington W, London, England
25	25	Uprated with five 1/2d green bantams	several open duplex Murchison unreadable dates Victoria & numeral (63) within 3-horizontal bars above/below	Miss Atkinson, 212 Warwick Rd., Carlisle, Cumberland, England
26	26	1904 QV ONE PENNY vermilion	double-ring Melbourne PM 1.30 2 10 03 & identifier 17	Mr. A. McMeekin, c/o Agents New Zealand Shipping Co., Buenos Ayres, South America, readdressed
27	27	1906 QV HALF PENNY emerald bantam, no borders	duplex Port Melbourne MR 15 04 & numeral 73 within 3-horizontal bars above/below	Messrs Jordan & Sons, 10 Elgin Road, Allahabad, N.W.F., India (typed)
27	27		cds Melbourne, unreadable, Vic (uprated 1/2d green bantam)	Mr W. McClay, 8/5 Mataram, c/o Messrs Burns Philp & Co., Sydney, NSW
			cds Hamilton 4.30A 27 MY 11 (possibly philatelicly-inspired)	Mr. L. Kurtz, Hamilton
15	16	Pleasant Creek News & Stawell Chronicle	Printed-to-Private-Order open duplex Stawell ? 4 94 & numeral 265 within 3-horizontal bars above/below, uprated 1/2d red	Messrs Rentel & Downe, 47 Fallington St., London, England
15	16	Pleasant Creek News & Stawell Chronicle	open duplex Stawell JL 8 93 & numeral 265 within 3-horizontal bars above/below	Rentels Telegram Agency, Collins St., Melbourne
15	16	Mornington Standard	numeral 462 within 3-horizontal bars above/below & 2 side bars (462 = Frankston)	Gordon & Gotch, Melbourne
15	16	St. Arnaud Mercury	cds St Arnaud SE 9 93 & numeral 94 within 2-horizontal bars above/below	Age, Melbourne
17	18	Mt. Wycheproof Ensign	open duplex Wycheproof FE 8 95 Victoria & numeral 1032 within 3-horizontal bars above/below	Mr S. Mahmke, Stawell
17	18	St. Arnaud Mercury (uprated E17 cut-out)	cds St Arnaud NO 4 95 & numeral 94 within 2-horizontal bars above/below	Messrs Clarke Son & Platte & Co., 85 Gracechurch St., London EC, England
18	19	The Australian Stamp Collector	cds Melbourne 11 A AP 11 96	Revista de la Sociedad Filatelica Argentina, Casilla de Coreo, Buenos Aires
26	26	The "Free Church Quarterly"	cds Geelong JU 28 02 & numeral 2 within 3-horizontal bars above/below & 1 side bar	A. Ross Esq. Jr., Palmers Island, Clarence River, New South Wales
136				

Source: eBay listings between March 2003 and May 2006

AUSTRALIA'S SMALL DOMESTIC REGISTERED POST ENVELOPES

Joan Orr

Australia Post introduced a new Registered Post system on 1 October 1996 replacing Certified Mail and Security Post. Options for Customers with this service were non-denominated prepaid (postage + registration) envelopes, including a domestic small size 130 x 240mm suitable for enclosing a regular DL size envelope with a thickness not exceeding 5mm and weighing no more than 250gms. Although a signature is required on delivery, these are no longer treated separately, but are consigned to the main mail stream processing and retrieved by the delivery centres.

Design:

This is simple and to the point. Three orange bars behind a white leaping kangaroo over POSTAGE PAID AUSTRALIA on a reddish stripe with to the left Australia Post's logo and registered post also in white. A black number, barcode and small rectangle to record a delivery confirmation request plus the 'AUSTRALIA ONLY...' use instruction, large red **R** beside an orange rectangle for extra service labels and postcode boxes at lower right complete the front.



Type 1 Front



Type 1 Back

The colours are carried over onto the reverse where there is a tear off receipt with optional service boxes which must be signed and date stamped at the office of posting. There is also a warning, in red, re items not suitable for posting in these envelopes, instructions re use, the product code, Australia Post and logo (in red) plus Australian Made under a triangle enclosing a kangaroo all in black completing the back. This design appears in Australia Post's *The Staff Guide to Registered Post* effective 1 October 1996. For ease of reference, I have designated this *Type 1*.

However, an envelope minus the Australian Made logo but similar in all other respects, was available at the same time. *Type 2*. Earliest date in my possession is 11 October 1996 from Victoria.



Type 2 Reverse, Front as Type 1



Type 3 Reverse, Front as Type 1

These two designs in various shades of the originals continued in use until the reverse Australia Post logo was changed sometime in 1997 (earliest May 1997 from Adelaide) *Type 3*, identical to the other two in all other respects, but shades are again obvious. Later again in 1999 the flap was tapered but all else remained the same.

In September 2005 new design elements were introduced. The same colours were kept, but along the top

to the left of the POSTAGE PAID section Australia/logo Post has been added and the font for registered post changed. All else remains the same. The reverse also has font changes with an extra line of text (in red) under WARNING and layout differences along the bottom, including a red block with white lettering for Australia Post. *Type 4*.



Type 4 Front



Type 4 Back

Physical characteristics:

The **paper** used is 100gsm. Galopaque – equivalent quality, Australian made. Early paper is creamier than later issues. Three interior designs for this paper have been used and here again shades are evident. These range from light pink to deep salmon background with white lettering.



Type (a)



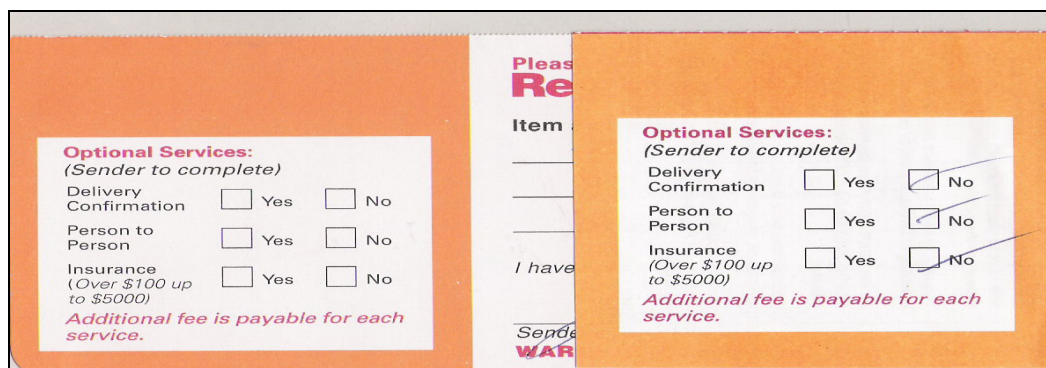
Type (b)



Type (c)

- Type (a) was used for envelopes *Type 1*, *2* (latest date 8.1.2000) and some of *Type 3*.
- Type (b) used for part of *Type 3* (Feb. 2000 to introduction of *Type 4*)
- Type (c) introduced with *Type 4* and still in use.

The **size** is 130 x 240mm with different flap sizes on the reverse. *Type 1* and *2* and part of *Type 3* are approximately 3.5mm deep x 23.5mm wide; part of *Type 3* (from Oct 2001) and *Type 4* are approx. 4mm deep x 22mm wide. **Sealing** is achieved by a peel ‘n seal method with the adhesive strip varying in width from approximately 2 to 2.5cms on *Types 1*, *2* and part of *3*. Sometime in 2001 (earliest 8.10.01) the peel ‘n seal was changed to 8 blobs of adhesive released when the peel off strip is removed. This system is still in use. The tear off receipt is attached to this flap and on *Type 1* the separation was by a very fine roulette gauging approximately 26. All other *types* are rouletted approximately 6.5.

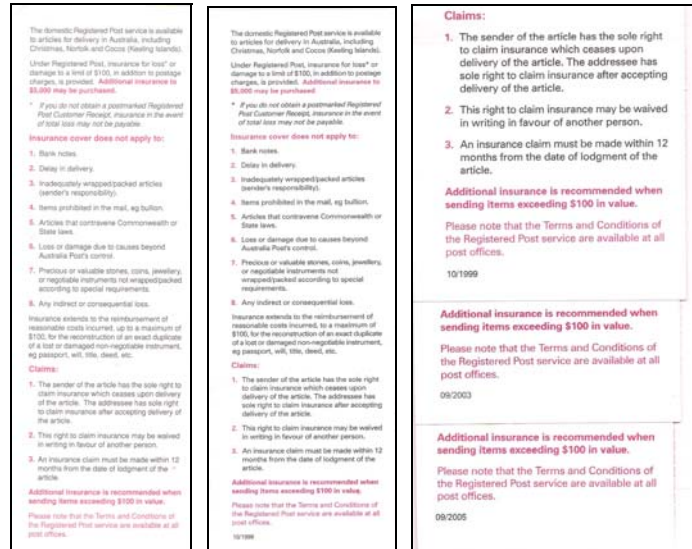


Roulette 26

Roulette 6.5

Postal Stationery Collector

Details of the service are printed on the back of the receipt which has changed in configuration of text and size once only from the original, although dates appeared on later printings e.g. 10/1999, 09/2003 and 09/2005 which is still in use.



Cost:

Single envelopes can be bought over the post office counter at time of posting or in advance. Buying packs of 10 or more at a time is cost effective for large users. Prices have risen over the years in line with other postal charges. Stamps, postal charges labels or charge accounts can be used to pay for extra services such as Person to Person and/or confirmation of delivery.

Date	Charge per Envelope	Charge per Pack of 10		Per \$100 Extra Insurance	Delivery Confirmation	Person to Person
		Single Pack	5 x Packs			
1.10.1996	\$2.20	\$21.00	\$20.00	\$1.00	\$1.40	\$4.00
1.7.2000	\$2.38	\$22.61	\$21.42	\$1.05	\$1.53	\$4.35
1.11.2001	\$2.80	\$26.60	\$25.20	\$1.05	\$1.65	\$5.00
1.9.2004	\$2.80	\$26.60	\$25.20	\$1.10	\$1.65	\$5.00
1.9.2005	\$3.00	\$28.50	\$27.00	\$1.10	\$1.70	\$5.20
4.9.2006	\$3.10	\$29.45	\$27.90	\$1.15	\$1.75	\$5.30

Compensation of \$100 is payable in the event of loss of an entire item if posted correctly over a post office counter and date stamped by a postal employee. No compensation is payable if the envelope is lost after being posted in an ordinary street posting box because no proof of posting can legitimately be confirmed. Extra compensation can be arranged at time of posting with a set rate per \$100 up to a maximum of \$5,000.

Varieties:

These can include the four basic types with receipt changes, interior paper design, shades. Usage alone or with extra services e.g. delivery confirmation and/or person to person. Another envelope which differs from the norm like this *Type 1* with missing number and corresponding barcode.

February 2007



\$1.40 Fee Delivery Confirmation



\$4 Fee Person to Person



Missing Number and Barcode

LITERATURE

Judy Kennett and Ian McMahon

From Our Contemporaries

***The Postal Stationery Society Journal* [UK] Vol 14 No 4 November 2006**

- A recent discovery of essays and proofs for the King George VI letterpress postal stationery and emergency adhesive stamps
- Estimating survival rates of used GB newspaper wrappers: two methodological approaches (by Professor John K Courtis)
- Perfins through postal stationery items: postcards
- Minutes of the Society's AGM held ... on Saturday 28 October 2006

***L'Entier Postal* No 75 Novembre 2006 (France)**

- Impressions from the Salon du Timbre (an exhibition, and the role of La Poste)
- New issues in bulk
- The lettercard in the river of time

***L'Intero Postale* No 97 Autunno 2006 (Italia)**

- The 34th Assembly of Unione Filatelisti Interofili (UFI) and Vastophil 2006
- Examples of advertising on postal cards intended for publicity purposes
- International reply coupons: the design Peking Type 2

***The London Philatelist* Vol 115 No 1340 November 2006**

- International reply coupons [their centenary in 2007]

Postal Stationery, October-November 2006

- Bidder Sample Specimen Samples, Specimen Code and Contracts
- Advertising on Wrappers
- Bands of Brothers, Part 3
- USA Postal Cards

Postal Stationery Collector

- Watermarked Chilean Formular Cards
- S6 Miscut Postal Cards

Postal Stationery, November-December 2006

- U.S. Card S37/UX27 Revisited - Again
- Carpatho-Ukrainian Postal Stationery, 1939 and 1945
- Ingerter Kuzych and Jay Carrigan.
- The Beginnings of the Envelope Industry in Springfield, MA
- Many Faces of the Die 9 Forgeries
- U.S. 20/21st Century Column
- U.S. 19th Century Column
- U.S. Postal Stationery New Issues
- Shoebox and Stationery Forum (Turkish Envelope Error; U85 & U86 Specimens; UPSS Publications Receive Awards; Mounting Postal Stationery in Album; Postal Stationery Journal Dates; Unusual 1.5 Cent Surcharge; 1996 Lewandowski Awards).
- Australian Postal Card Miscues
- Literature Reviews (Charity Letters Bearing Advertisements for the Benefit of Orphans (1898-1901); The Postal Issues of Syria, Lebanon and the Alaouites 1919-1945; British East Africa, Stamps, Postal Stationery & Cancellations)

Gibbons Stamp Monthly, November and December 2006

- Queensland Postal Stationery
- Postal Stationery Matters (Canadian Tourist Postcards, GB aerogrammes, Victoria Federation card, cut-outs)

Ganzsachensammler, November 2006

- Private Stationery of the Cosmopolitan Correspondence Club
- NABA '06

FROM THE SECRETARY

Resignations

The following have sent in resignations – Derek Brennan, Wallace Craig (USA), Margaret Horton (NZ), and John Wilkins.

Future meetings of the Postal Stationery Society of Australia

We have been advised that we have a provisional meeting slot at Northland 2007, the Limited National at Whangarei, New Zealand (North Island), to be held on 31 March – 1 April 2007. Postal stationery is one of the classes offered at National level. Our meeting is presently set down for 3pm – 5pm on Saturday 31 March. An email message will be sent to Australian and New Zealand members closer to the date to confirm. We have expressed interest in a meeting slot at Sydney Stamp Expo 2007, which will be held at Royal Randwick racecourse on 15-17 June. This is a full national exhibition.

Congratulations to Bernie Beston

In *The London Philatelist* for December 2006 the awardees for the 2006 Julian Chapman Memorial Scholarships are announced. One has been awarded to Bernie Beston. He will be researching British Guiana postal stationery with a view to publishing a detailed catalogue in a year or so.

Contemporary Postal Stationery Competition

This competition is being offered at all national and part-National exhibitions in Australia until 2008. Eligible exhibits will next be considered at Sydney Stamp Expo 2007 in June. For further information about the Competition please contact the Convenor, David Collyer, by Post at PO Box 201, Gladesville NSW 1675 or by email at d_collyer30@hotmail.com. The Guidelines for the Competition were published in *Postal Stationery Collector*, Issue No 36, February 2004.

New Year greetings

Good wishes for 2007 to all of our members and exchange partners.

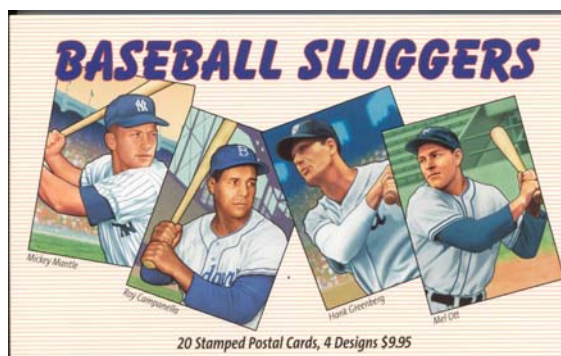
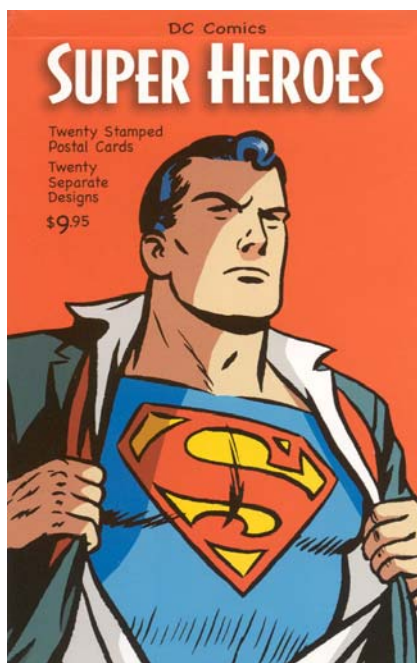
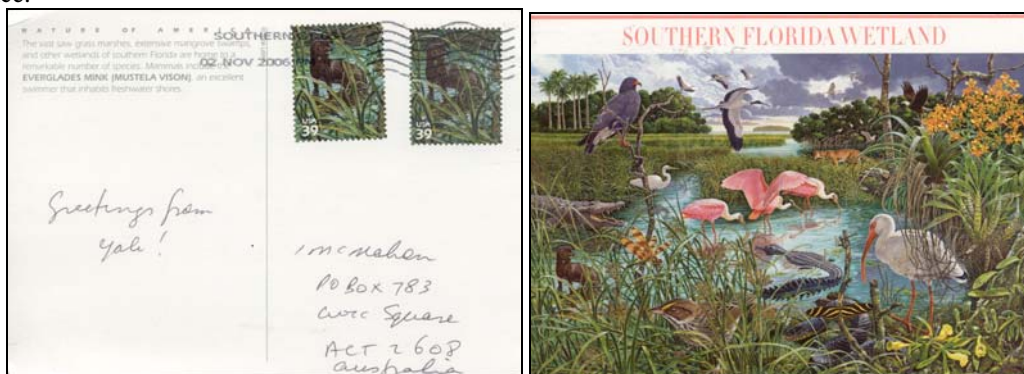
February 2007

NEW ISSUES

USA South Florida Wetlands Postcards and Postcard Booklets

The US has issued a set of 10 39c postcards in conjunction with their Southern Florida Wetland adhesive stamp issue depicting Florida wildlife. The cards were issued in five joined pairs. The stamp area of each of the postcards is similar to one of the adhesive stamps, while the reverse of the card shows a design similar to the whole self-adhesive miniature sheet.

The US also continues to issue postcard booklets. Three recent issues depicted Super Heroes, Baseball Sluggers and Let's Dance.



Canada Stamped Envelopes

Canada Post has for many years issued commemorative envelopes to mark anniversaries which did not warrant an adhesive stamp issue. These envelope usually included a specially designed envelope, a commemorative postmark and an adhesive stamp.

In 2006, Canada issued two envelopes where the adhesive stamp was replaced by an imprinted stamp, one to commemorate the 25th anniversary of the establishment of Canada Post as a crown corporation and the other to commemorate the Hungarian refugees of 1956. In both cases the envelopes were only issued cancelled with a commemorative postmark and were not available mint.



Bangladesh Error, Sweden and Belgian Envelope

Illustrated below are a Bangladesh postal stationery envelope missing half of the design of the imprinted stamp and a recent Belgian envelope. Also illustrated is a Swedish pre-paid card courtesy of Hans Eriksson.

