

POSTAL STATIONERY

COLLECTOR

Journal of the Postal Stationery Society of Australia

Issue No 6

August 1996



THE POSTAL STATIONERY SOCIETY OF AUSTRALIA

The Postal Stationery Society of Australia has been established to encourage the collecting of postal stationery in Australia and to provide a forum for postal stationery collectors to maintain contact with other stationery collectors and to learn more about their hobby.

The Society is not based in any particular city or state and plans to hold meetings at national and state level exhibitions. Subscription rate for 1996 has been set at \$20. For further information please contact the Secretary or Treasurer or your state coordinator.

INITIAL OFFICE BEARERS:

CONVENOR:	Ian McMahon, PO Box 783, Civic Square ACT 2608
SECRETARY	Judy Kennett, PO Box 260, Jamison ACT 2614
TREASURER	John Crowsley, PO Box 2124, Ascot QLD 4007

STATE COORDINATORS

QLD	Bernie Beston, PO Box 26, Redcliffe Qld 4020
SA	Martin Walker, PO Box 247, Torrensville Plaza, SA 5031
WA	Ray Todd, 19 High St, South Perth, WA 6151
NSW	Bernie Doherty, PO Box 18, Waratah NSW
TAS	Malcolm Groom, 26 Stoke St, Newtown Tas 7008
VIC	John Sinfield, PO Box 6246 St Kilda Rd Central Vic 3004
ACT	Ian McMahon, PO Box 783, Civic Square ACT 2608

Web page: <http://www.pcug.org.au/~hkarman/pss001.htm>

Postal Stationery Collector

Editor: Ian McMahon

Contributions to the Postal Stationery Collector should be sent to Ian McMahon, PO Box 783 Civic Square ACT 2608. Articles on any postal stationery topic are welcomed and, if possible should also be submitted on 3.5 inch MSDOS disks in any word processing format (Word for Windows preferred). Illustrations should be good quality photocopies. Book reviews, news items, information on new issues and members classifieds are also welcome. Letters to the Editor and comments on articles published are encouraged.

COPYRIGHT: The copyright of the contents of the Postal Stationery Collector is held by the Postal Stationery Society of Australia. Items may be reproduced only with the written consent of the Editor.

ISSN 1324-2105

August 1996

CONTENTS

	Page
<i>Editorial</i>	1
<i>Letters to the Editor</i>	3
<i>From the Secretary</i>	5
<i>Fiji - The Albino 'Half Penny' Surcharge Postcard</i> Ross Duberal	6
<i>Australian Rarities: Devaluation Overprints Following 1 October 1923 Rate Reduction</i> John Sinfield	7
<i>The First Cathy Freeman Card</i> John Sinfield	9
<i>Stamped Envelopes of South Australia.</i> Martin Walker	10
<i>From Our Contemporaries</i>	16
<i>New postcards send collectors back to the good old days!</i> Martin Walker	17
<i>Listing of Australian Non-Denominated Postal Stationery (Part 5)</i> Ian McMahan	20
<i>Great Events In Postal Stationery!</i> Judy Kennett	27
<i>Australian Official Post Office Stationery</i> Ian McMahan	28
<i>New Issues and Other Bits and Pieces</i>	30
<i>Updated Listing Of Commonwealth Of Australia Printed-To-Private Order Stationery</i> Ian McMahan	<i>Supplement</i>

EDITORIAL

Ross Duberal raises a very interesting question about the use of the terms 'post card', 'postcard' and 'postal card'.

Post cards were first introduced in 1869 by Austria to provide a convenient and cheap means of communication. (They were headed 'Correspondenz-Karte').

Postal Stationery Collector

From the first issue of 1870, the British used the term 'post card' as a heading on their cards, although some early post office notices referred to 'postcards'. Their lead was followed by most other English speaking countries (including Australia and Canada) although from about 1913 the New Zealanders favoured 'post-card'.

The notable exception was the United States which, from its very first issue in 1873, used the term 'postal card'. This term has been used in the USA for postal stationery cards every since.

It would appear that in the British world at least that Ross is correct in deducing that 'post card' is the correct term. However, in the world of American English, clearly 'postal card' is correct.

In Australia 'post card' has long been the correct rendition (although 'postcard' is commonly used). However given the tendency of some Australians to adopt American words and spelling, 'postal card' has begun to appear in recent years in the philatelic literature although I can't ever remember seeing the term used in the non-philatelic literature or by Australia Post. Which shall we use?

The Society now has a web page, courtesy of Hans Karman:
<http://www.pcug.org.au/~hkarman/pss001.htm>

CAPEX 96

*There were 33 stationery exhibits at CAPEX 96. Two gold medals were awarded (to L Daun of Sweden for *Sweden 1872-97* and to S Kuyas of Turkey for *Levant*) and one large gold (to L Grunin from the USA for a display of Mulready envelopes).*

Congratulations to Darryl Fuller for his large vermeil and special prize for *Leeward Islands*, Bernie Beston for his large vermeil for *British Guiana*, Raymond Todd for his silver medal for *Sweden 1872-1919* and Margaret Horton from New Zealand for her large vermeil for *Commonwealth of Australia Envelopes 1913-1937*.

WANTED

FIJI POSTAL STATIONERY

better early items and modern aerogrammes and registered envelopes

HONDURAS POSTAL STATIONERY

preferably postally used.

Ross Duberal 3/78 Colin Road Scarborough WA 6019

Contributions to the next issue of the Journal close with the editor on 30 October 1996.

PLEASE CONTRIBUTE!

LETTERS TO THE EDITOR

Postcard, Post Card or Postal Card

There appears to be some inconsistency in the use of the word post card, or is it postcard, or postal card. Early usage and what appears on the cards themselves appear to indicate the former. What do other members think and is there any final authority on the correct usage?

Ross Duberal

What value an autograph on postal stationery?

With the increase of post card issues in Australia and around the world we are seeing a good number of familiar subjects appearing including many sports idols. With the recently recorded Cathy Freeman and Nicole Stevenson cards come the new AFL Centenary cards depicting pictures of the current teams and featuring in close-up one star from each team. In drawing a parallel with the prolific sports collector cards I note that big premiums are to be had for collector cards bearing the autograph of the depicted player. I wonder what attitude collectors, exhibitors and judges of postal stationery will have towards post cards and other stationery items similarly autographed by the subjects of the cards?

Will such cards be revered by stationery collectors as well as fans of the particular sports person or will the die hard purists simply dismiss them as good cards damaged by superfluous writing over the picture?

What are your views?

Martin Walker

Commonwealth reissue of divided 1908 South Australian Reply Postcards

I noted in John Sinfield's article on the Commonwealth reissue of divided 1908 South Australian Reply Postcards (*PSC* May 1996) the perpetuation of a common error in Australian philatelic history - the incorrect Christian name of the famous South Australian and Commonwealth Stamp Printer, J B Cooke. Whilst James Cooke is a common error, no doubt influenced by the famous navigator, his correct name was John Bradley Cooke.

In the same article John has identified the issue date of the unoverprinted card as 1908. I do not believe this to be the case as the "WITH REPLY CARD" heading is a different type to that appearing on the cards issued prior to Cooke's transfer to Melbourne in 1909. The heading is in fact in the same style and type as that appearing on the Commonwealth Reply Post Card and consequently I feel that this issue is more likely to be from 1911 or 1912. Alas, I am unable to conclusively prove this as the only used copies of the base card I have seen date from February 1912.

Martin Walker

Australian States Postal Stationery Catalogue

I support Peter Steinkamp's comments on the need for an Australian States Catalogue and for the Society to publish it. Many collectors are receptive to trying something new if they have the right incentive and information. We are closing in on the Centenary of Federation and the interim federal period of 1901-1912 in which postal stationery forms an important part of the picture, so the timing is right.

The suggestion that a computer/laser printer be used would allow the project to be set up 'in-house'. The format and treatment given by Brusden-White to the Australian Commonwealth [adhesive] issues in their recent loose leaf specialist catalogue serves as a good example, with each page devoted to the illustration and description of a single issue.

In the case of the Australian States, the catalogue would be divided into six sections and it would seem logical that each state be primarily responsible for its own section (although of course, this is not essential).

As the catalogue would be loose leaf, each state section could be sold as a separate entity. The sale of each section would not depend on the completion of the sections for the other states. Also, in the case of complex listings such as Victorian envelopes that section could be distributed by itself. The evolution of such a catalogue and its distribution in smaller units, should provide considerable continuing interest for members and through its distribution attract new members.

Once a single section was completed, the draft would be distributed to members for proofing. Because the typesetting is done by computer, changes can be made at any time. I would suggest that photocopying would be perfectly acceptable, as the first edition print run would probably be in the vicinity of 50-70 copies, with extra copies produced as needed.

The first edition of any section could be expected to contain errors. I would suggest that a lot of time not be spent trying to get this edition 100% correct. I think it is this psychology of perfection that has bedevilled this type of project which, if my memory serves me correctly, was first mooted in 1984. A revised second edition could be produced a year later, with subsequent editions every 2-3 years.

Two areas that would have to be given very careful initial considerations are:

1. The layout and type style should be standard for all sections. Again, the Brusden-White system should be looked at closely as a model.
2. Catalogue numbering is critical and should be got right in the first edition.

I would suggest that a 'dry-run' using a single sub-section eg Western Australian lettercards be done and distributed for comment.

Pricing in the initial edition should be reasonably conservative. I think it is better for both the hobby and the market if prices be seen to rise in subsequent editions, rather than fall due to over-estimating or left at unrealistically high levels.

Robin Linke

August 1996

FROM THE SECRETARY

Judy Kennett

Member's Interests

Please send details of your interests to the Secretary PSSA, PO Box 260, Jamison ACT 2614 or by fax to (06) 251 1387.

Margaret Hamilton	Western Australia, British North Borneo, Straits Settlements (King Edward VII to 1939) and Singapore
Ross Duberal	Fiji and Honduras
Steve Schumann	New Zealand, Australian stamped to order
Ray Price	Literature
Michel Roland	Belgium (pre-1909, 1914-1919)
Brian Peace	Literature
Andrew Jansen	Australia and colonies, aerogrammes and airletters
Martin Walker	Australia postcards, Romania (pre-1948), Coats of Arms on Stationery, Canada Stamped Envelopes (pre-1953)
Margaret Horton	Australia 1913-1937: Envelopes

Membership

The Society welcomes Richard Peck, Steve Schumann, Margaret Horton and Malcolm Lacey as members. The Society now has 61 members.

SOCIETY TO MEET IN MELBOURNE

The Society will hold its third meeting in Melbourne at 11 am on Sunday 20 October 1996 at *Melbourne '96 National Philatelic Exhibition* in the Theatrette. *Melbourne '96* is a full national. All members are urged to attend the meeting and visitors are welcome. The meeting will feature a business session, a display (yet to be decided) and members are invited to bring along a few interesting items from their collections. The Society has donated a prize to the exhibition for the best postal stationery exhibit.

We look forward to a good attendance of members and interested visitors at the meeting. If you have any matters you would like discussed at the meeting, please contact me as soon as possible, either by mail, or by telephone on (06) 251 6997 (evenings) or by fax on (06) 251 1387. I can then put it on the agenda. Thank you.

SOCIETY MEETING

11 AM SUNDAY 20 OCTOBER
MELBOURNE '96 NATIONAL PHILATELIC EXHIBITION

ALL WELCOME

FIJI - THE ALBINO 'HALF PENNY' SURCHARGE POSTCARD

Ross Duberal

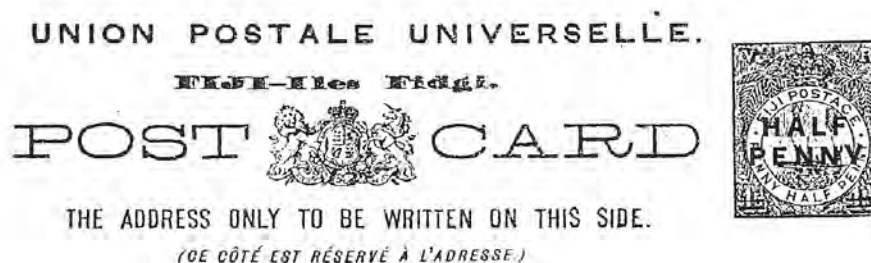
In 1903, there was a reduction in postage rates for postcards - ½d for usage within Fiji and 1d for elsewhere. Previously the rates had been 1d for within Fiji and Australasia and 1½ elsewhere. The surplus stock of the 1½d postcard was surcharged with the lower value by the Government printer, Suva for temporary use prior to the arrival of King Edward VII cards printed by De La Rue, London (see illustration).

Some time ago I obtained an unsurcharged 1½ postcard addressed to Emden, Germany posted in 1908 - a nice item for its very late date of usage as it was 4 years after general usage ceased.

It so happened to be on my desk many months later with the light in the right position to highlight some impressions in the stamp position on the card. Using the thin paper/pencil rub method a 'HALF PENNY' impression was revealed.

My thought is that the card was possibly a 'left over' from when the Government Printer was positioning the 1903 surcharge in the press. Also why was it put back into circulation?

Could any readers offer other suggestions to how this albino surcharge occurred?



FIJI POSTAL STATIONERY

Ross Duberal is in the process of writing a monograph on this subject and has completed drafts on the chapters of envelopes, registered envelopes, lettercards and newspaper wrappers. Others to come are postcards, reply postcards, air letters/aerogrammes, and government franks. Any help from members would be appreciated by means of photocopies of unusual items, dates of useage of items etc. Please write to Ross at 3/78 Bolin Road, Scarborough WA 6019.

August 1996

**AUSTRALIAN RARITIES: DEVALUATION OVERPRINTS FOLLOWING 1 OCTOBER
1923 RATE REDUCTION**

John Sinfield

On 1st October 1923, the Australian domestic and British Empire letter rates fell from 2d per ½ oz to 1½d per ounce for first class letters, from 1½ per 2 oz to 1d for 4 oz for second class (printed matter etc) mail and from 1½d to 1d for postcards. This unusual rate reduction brought about several rarities in Commonwealth stationery. Two are illustrated below, and further examples will be featured in future issues of *Postal Stationery Collector*.

Writing in the February 1924 edition of *Victorian Philatelic Record* page 59, A A Rosenblum pointed out that:

the various [rarer stationery] items have been brought about through the economical attitude of the postal authorities, who desire to use up absolutely every scrap of material left on hand when the recent reduction of postal rates came into force

His article continues by stating that 'THREE HALFPENCE' overprints on 2d stationery included, inter alia, 40 pieces of 2d orange lettercards (H&GA22a, overprint on H&GA20), 50 pieces of 2d 'no postage' octagonal envelopes (H&GB16, overprint on H&GB12) and only 6 pieces of the same item with 'postage' (H&GB17). Rosenblum was not specific as to his source for these quantities, but infers that a consensus may have been reached among stationery collectors of the time.

Where have all these purported pieces now gone? To my knowledge there is record of only a single surviving copy of both H&GB17 and H&GA22a, and each of these is illustrated below. Substantially more copies are extant of H&GB16, but in mint and used condition even these probably add to the survival of only about a dozen copies.

Figure 1



Mr Stan Stain
52 Nicholson St
Footscray

Figure 1 shows H&GB17 (E14) 1923 envelope 2d orange with 'POSTAGE'. This copy used between the Melbourne suburbs of Oakleigh and Footscray on 22 May 1924, was for many years held in the collection of the late Julie Resch. Its survival more than likely stems from the addressee, Stan Steele, who, with Charles Fawcett the local Footscray postman (and better known by the pseudonym 'Harold Charles') were both avid Australian postal stationery collectors of that era. The item has never been placed on sale in the market. No unused examples are recorded, nor is devaluation known on 2d orange PTPO envelopes (although stamped to order covers 1½d on 2d red certainly exist in both commercial and 'OS' die formats.

Figure 2

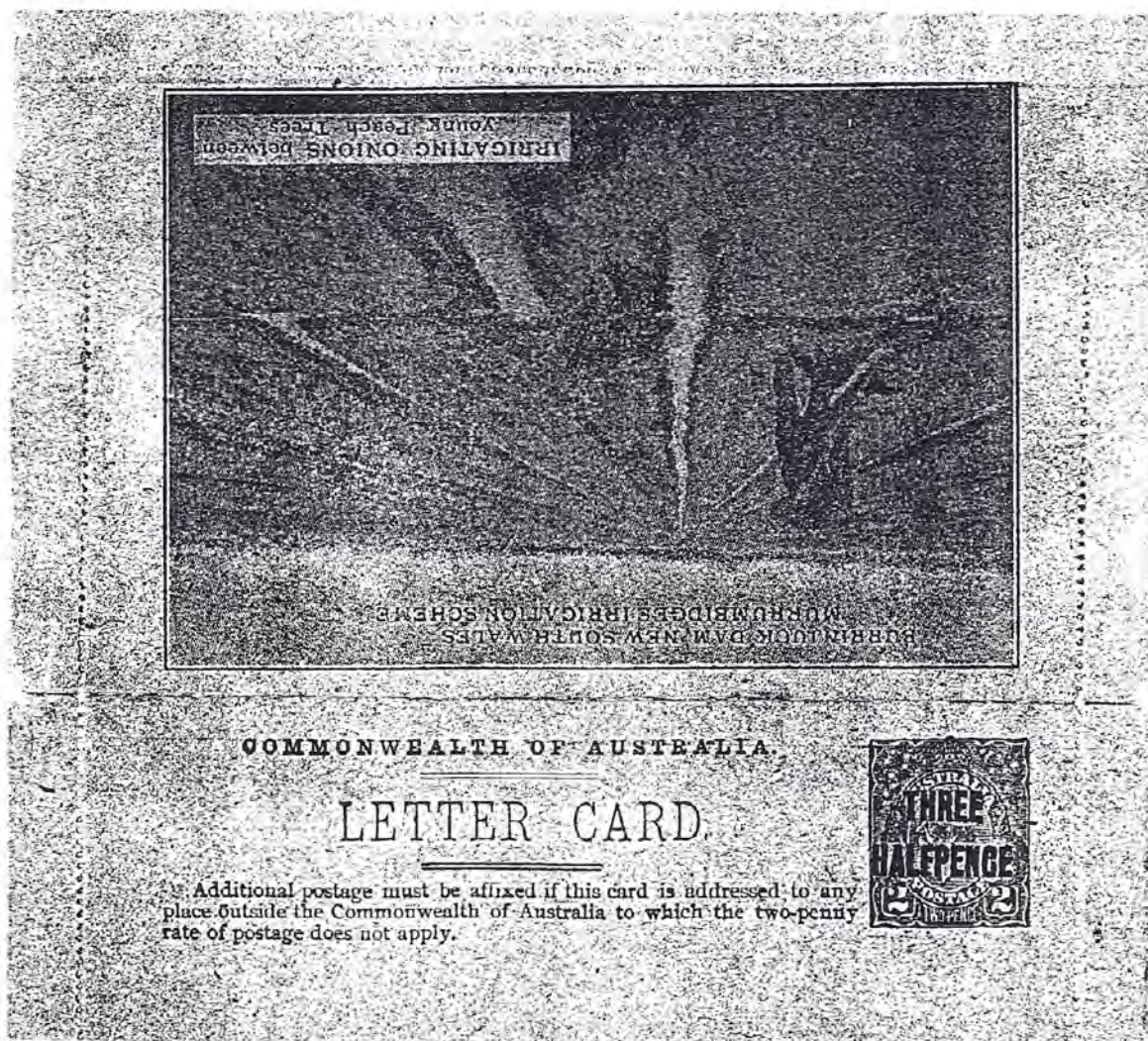


Figure 2 shows H&GA22a - (LC19a) 1921 2d orange lettercard on uniformly grey stock. This is a mint example with one of the four very scarce rectangular views in the Murrumbidgee Irrigation Schemes series. This piece last changed hands privately in 1984 and again no examples have been known to be auctioned (at least in Australia within the last 30 years). Does the devaluation also exist on white stock 2d orange lettercards? In my many years of collecting stationery I have never seen nor read of a copy, but H&G list the white card with overprint as H&GA22, and the grey stock as H&GA22a.

August 1996

THE FIRST CATHY FREEMAN CARD

John Sinfield



POSTAGE PRE-PAID AUSTRALIA



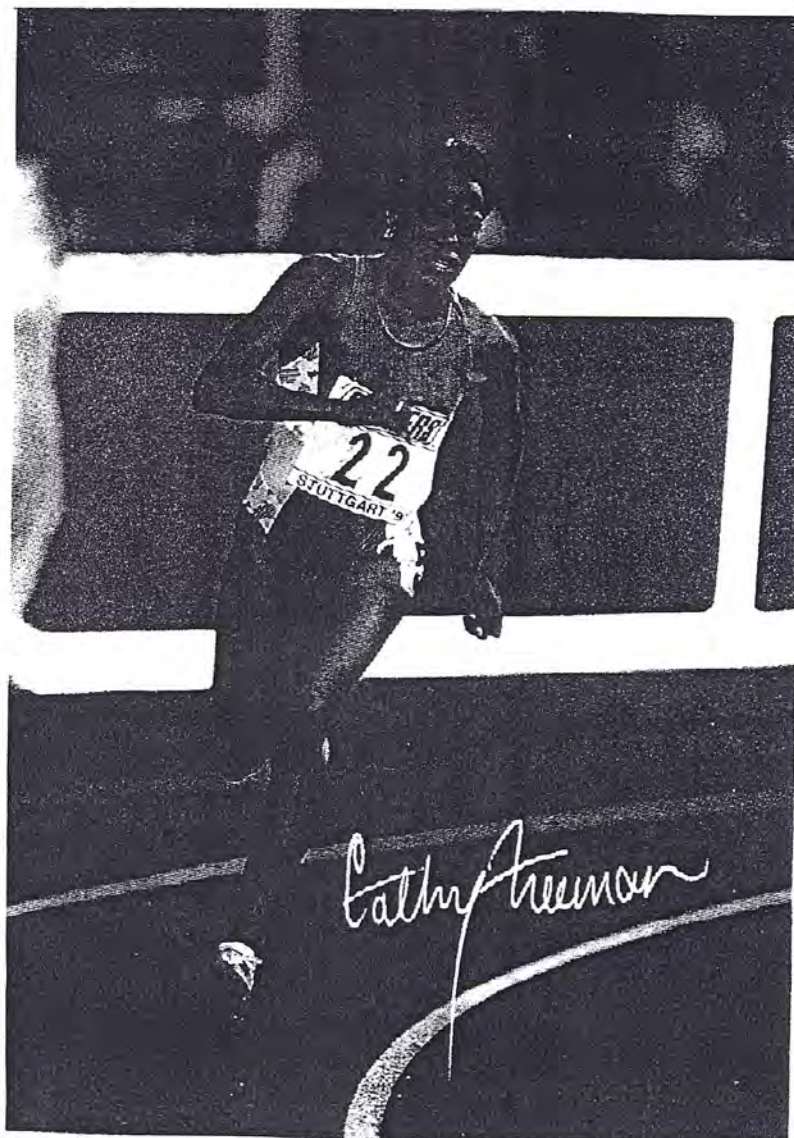
FOR POSTING IN AUSTRALIA
AND DELIVERY WORLDWIDE



Australia Post is proud to support Australia's Olympians. This card features Cathy Freeman, our employee and champion sprinter.

Photo supplied by Sajer The Library

Over the past few issues of our Journal, several references to the Olympic Athletes cards have been made. I have been one of the fortunate few to have obtained a copy of the original Cathy Freeman card depicting her at the 1993 World Athletic Championships in Stuttgart, and for reference show a copy of both front and reverse. Both background and track are in deep red shades which unfortunately do not reproduce very distinctly. I do not have a spare copy of this card, but have a couple of spares of the collage of Australia Post's Olympic athletes, and am seeking to swap for original Nicole Stevenson card (as pictured in PSC issue #5). Anyone interested in exchanging?



STAMPED ENVELOPES OF SOUTH AUSTRALIA.

A talk presented to the South Australia Study Group on June 22nd, 1993

Martin Walker

South Australia might have been one of Australia's earliest stationery issuers had an 1855 proposal been adopted. In May of that year, only five months after the issue of the first stamp, John Watts wrote to the Colonial Secretary recommending that stamped envelopes be issued.

His letter read as follows,

*General Post Office
Adelaide, 17 May 1855*

Sir,

The window clerk who sells the postage stamps being subject to occasional losses it has been suggested to me that as a means of covering such losses he should be allowed to sell stamped envelopes charging one penny each for them over and above the amount of stamps placed thereon and I have the honour to request that should His Excellency the Officer Administering the Government approve of this suggestion that you will be so good as to procure and forward to me his sanction thereto.

*I have the honour to be,
Sir,
Your most obt. Servt
John Watts
P.M.Genl.*

This letter has a minute dated May 18th which is both vague and tantalising as it approves the suggestion - but on the proviso that the public are not considered under an obligation to buy the stamped envelopes.

It should be emphasised here that in this case a stamped envelope would have been a normal envelope bearing one or more examples of the first 2d. issue. It is not known if Watts proceeded with the idea but if he had then this would be the first official envelope issued in Australia. The first stamped envelope award would still go to the Sydney local post embossed to order issues seen from the mid 1840s.

The question of the issue of stamped envelopes did not seem to arise in the colony. In 1902, when the Post Office Guide incorporated the Commonwealth regulations for the first time, stamped envelopes were included in the list of issues required to be on sale at each post office or available as stamped to order issues.

Specifically, registration envelopes of three sizes were listed as being available but stamped envelopes of ½d, 1d or 2d were only available as stamped to order issues. In 1902, South Australia did not have any of these issues, nor did the local Stamp Printer have any facilities to produce them.

August 1996

In 1904 some enquiries concerning stamped envelopes were sent to Adelaide from the Secretary of the Postmaster-General's Department, Melbourne. Charles Todd, then the Deputy Postmaster-General for South Australia, replied on June 8th,

There has been practically no enquiry for stamped envelopes in Adelaide. We could obtain the necessary appliances for printing them for about 25 pounds, but I do not think it is worthwhile going to this expense, as sooner or later we shall no doubt have uniform Australian stamps, cards, stamped envelopes, etc.

A similar enquiry was sent again in 1905. By then the Deputy Postmaster-General was R. Waddy and his reply, dated August 3rd, read,

Referring to your memorandum of the 17th ultimo, G.2648, we have not hitherto printed Letter Cards, Registration Envelopes or Stamped Envelopes in South Australia, and to save expense we intended waiting until one design of stamps etc. was issued for the whole of the Commonwealth.

We can, however, if it is desired, issue Letter Cards, Registration Envelopes and Stamped Envelopes. The necessary machinery would cost not more than, say, thirty pounds - this would be a temporary arrangement only.

I do not think there would be much demand in South Australia, and if there is any probability of Commonwealth stamps, etc. being used within the next two or three years it would be better to let the matter stand over.

Waddy's reply is minuted -

Recommended to reply that it is not considered desirable to incur any expense in providing the articles mentioned until a decision has been arrived at respecting the new postage stamp it is proposed to provide for each state.

Little more seems to have been raised about stamped envelopes until they were included in a recommendation of a Royal Commission into the Postal Services of the Commonwealth in 1908. This recommendation was that, in anticipation of a uniform issue of stamps and stationery, each state should have available the same range of stamps and postal stationery.

The issue of stamped envelopes in South Australia was still delayed as the printer of stamps was transferred to Melbourne in 1909 where he took up the duties of producing all postal issues for four states.

The Treasury records discovered by Richard Peck some years ago have revealed nearly all there is known about the production of South Australia's only stamped envelope issues. Unfortunately some of the details in these records conflict but reasonable explanations can be drawn from what is available. Nearly all the following information is taken from Peck's writings appearing in "Sydney Views" or "Australian Stamp Archives".

A register of the movement of dies and electros between the Treasury strongroom and the Stamp Printer reveals that on June 14th, 1911 ½d, 1d & 2d stamp dies were transferred to the stamp printer. These dies were originally made for postage stamp plate production by De La

Rue & Co of London. They were sent to South Australia in 1902 and went to Melbourne with Cooke when he was transferred in 1909. These dies were used to produce two electros of each value before being returned to the Treasury on June 17th.

The strongroom register also reveals that, on June 12th, the die for the Tasmanian registered envelope stamp was transferred to the stamp printer and returned on the 19th. Only one electro for printing registered envelopes seems to have been produced although a cameo die for the embossing would also have been needed.

The electros are recorded as being moved out of the Treasury on July 6th but as there is no record of them being delivered it is presumed that they were sent with the dies in mid June. There must have been some envelopes produced before the electros were returned as the 1d, 2d and registration envelopes were issued in Adelaide on July 10th. No record of the issue of the ½d envelope has been found to date but I believe it to have been available on July 10, 1911 as well.

This theory is confirmed by a report given to the June 28 meeting of the Philatelic Society of South Australia. J H. Welfare, the Secretary of the Society, gave a report of a recent visit to the Commonwealth Stamp Printing Department where he had seen the 1d and 2d envelopes and the registration envelopes being printed.

Despite this evidence the printing figures for these envelopes only commence in July 1911. This may be because the printing figures were only registered when the printer put the stamps into stock rather than when they were actually printed. This concept may also explain some of the date conflicts of printings being done when the printer seemingly did not have possession of the electros.



'Stamps' of the Tasmanian and South Australian registration envelopes showing similarity of design.

The printer of stamps is recorded as having electros for envelope printing as follows -

<u>Value</u>	<u>No.</u>	<u>Dates in possession</u>
½d	2	6. 7.1911 to 25.11.1911
1d	2	6. 7.1911 to 25.11.1911
	1	5.12.1911 to 9.12.1911
	1	12. 1.1912 to 19. 1.1912
	1	23. 2.1912 to 12. 3.1912
	1	6. 5.1912 to 7. 5.1912
	1	20. 5.1912 to 11. 4.1913
2d	2	6. 7.1911 to 25.11.1911
3d	1	13. 7.1911 to 30.11.1911

The printer's job book shows the following -

Start	Order	Notes
10. 7.1911	48000 x 1/2d	One hundred pounds worth.
10. 7.1911	24000 x 1d	ditto
10. 7.1911	12000 x 2d	ditto
11. 7.1911	8000+8000 x 3d	ditto
10. 8.1911	1d	Second order
10. 8.1911	2d	Second order
		This was altered to 1d.
10.8.1911	8000 x 3d	
24.10.1911	8110 x 3d	Not printed?
20.12.1911	1d	
22. 5.1912	1d	

It will be noted that all envelopes printed were issued except for 678 1d envelopes. The fate of these is not known but they may have been included with the issue figures of the 1d roo envelope in early 1913. They could also have been retained as specimens, destroyed or spoiled.

The date of issue was recorded in the minutes of the July 26th meeting of the Philatelic Society of South Australia but, as already stated, this applied to only the 1d, 2d, and registration envelopes. Stamp journals around the world noted the appearance of the three items in their new issues columns but the 1/2d envelope seems to have eluded all contemporary references. The earliest reference I have seen is its listing in the Ascher catalogue of 1930. The dates of use recorded by me are as follows -

1/2d	23.11.1911 to 10. 4.1939	2d	7.10.1911 to 10. 2.1938
1d	18. 8.1911 to 21.2.1938	3d	22. 11.1911 to 1. 3.1915

Printing figures (or stocks lodged with the Distributor of Stamps may be a more accurate term) (Pr = Printed to private order) -

Date	1/2d	1/2d Pr	1d	1d Pr	2d	3d
7.11	1000	5000	19000	2000	11000	7958
8.11	22000		12000			
9.11	3000		900			8000
10.11	2000		17000			
11.11						
12.11			10000	9894		
1.12			81678			
2.12				20000		
3.12						
4.12						
5.12			10000	20000		
6.12			16000			
7.12						
8.12						
9.12			29075			
10.12						
11.12			5700			
Totals	28000	5000	201353	51894	11000	15958

Postal Stationery Collector

Issue figures (or stocks issued by the Distributor of Stamps, Melbourne to Adelaide maybe a more accurate term) (Pr = Printed to private order) -

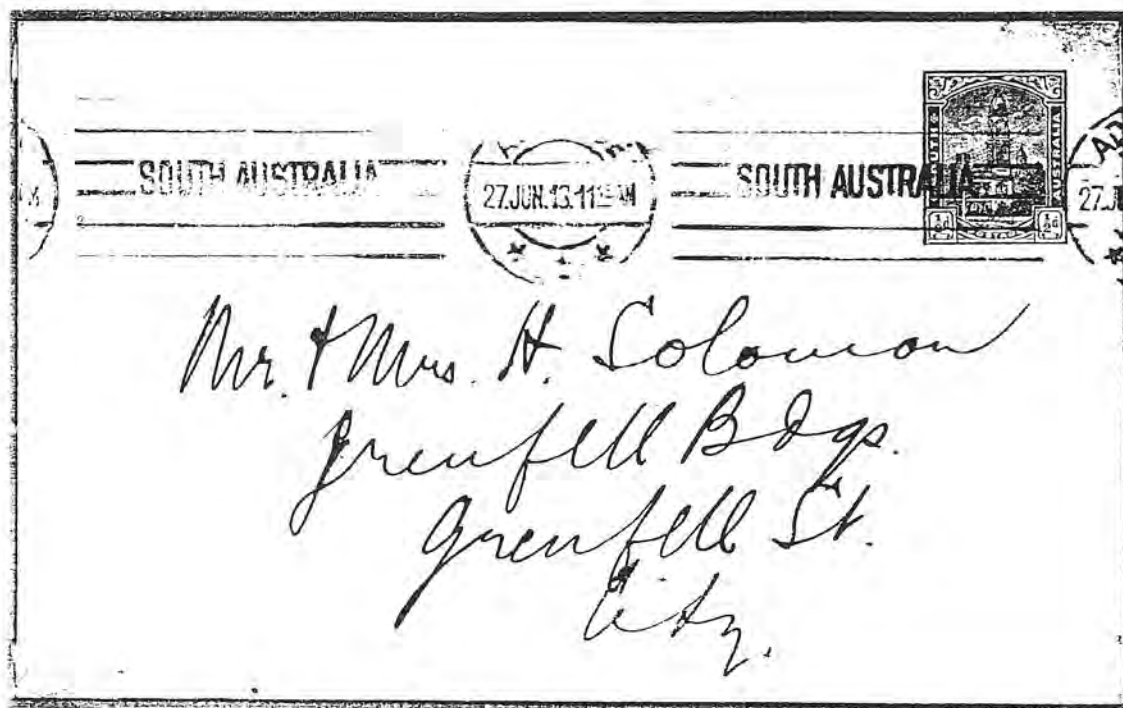
Date	½d	½d Pr	1d	1d Pr	2d	3d
7.11	1000	5000	19000	2000	11000	7958
8.11	22000		12000			
9.11	3000		900			8000
10.11	2000		17000			
11.11						
12.11			10000	9894		
1.12			47000			
2.12				20000		
3.12						
4.12						
5.12			10000	20000		
6.12			38000			
7.12						
8.12			12000			
9.12			29075			
10.12						
11.12			5700			
Totals	28000	5000	200675	51894	11000	15958

Contemporary use of the envelopes ceased around late 1913 when the Commonwealth issues came into general use. The envelopes were valid for use until pre-decimal currency issues were de-monetised on 14.2.1968.

The stamped to order issues are elusive. 5,000 ½d and 51,894 1d envelopes were printed. It is interesting that the first month's printings contained private orders. Perhaps the receipt of these orders may have been the catalyst behind the production of the issues as it would have been easier to wait for the uniform issue.

Of the orders only one has been identified. This was for Clutterbuck Brothers - the farming implements agents of Hindley Street (see illustration on cover). Two examples of this envelope have surfaced - one very much eaten by insects. I became aware of the order some years before actually sighting the envelope. In a register of letters from the Deputy Postmaster-General, Adelaide to the Commonwealth Stamp Printer there appears in the index a record of a letter of complaint concerning a shortage of envelopes impressed for Clutterbuck Brothers. As this letter was dated 16.12.1911 it can be presumed that some, if not all, of the 9,894 envelopes printed in December 1911 were for Clutterbucks. The identity of the remaining 1d and all the ½d private envelopes still remains a mystery.

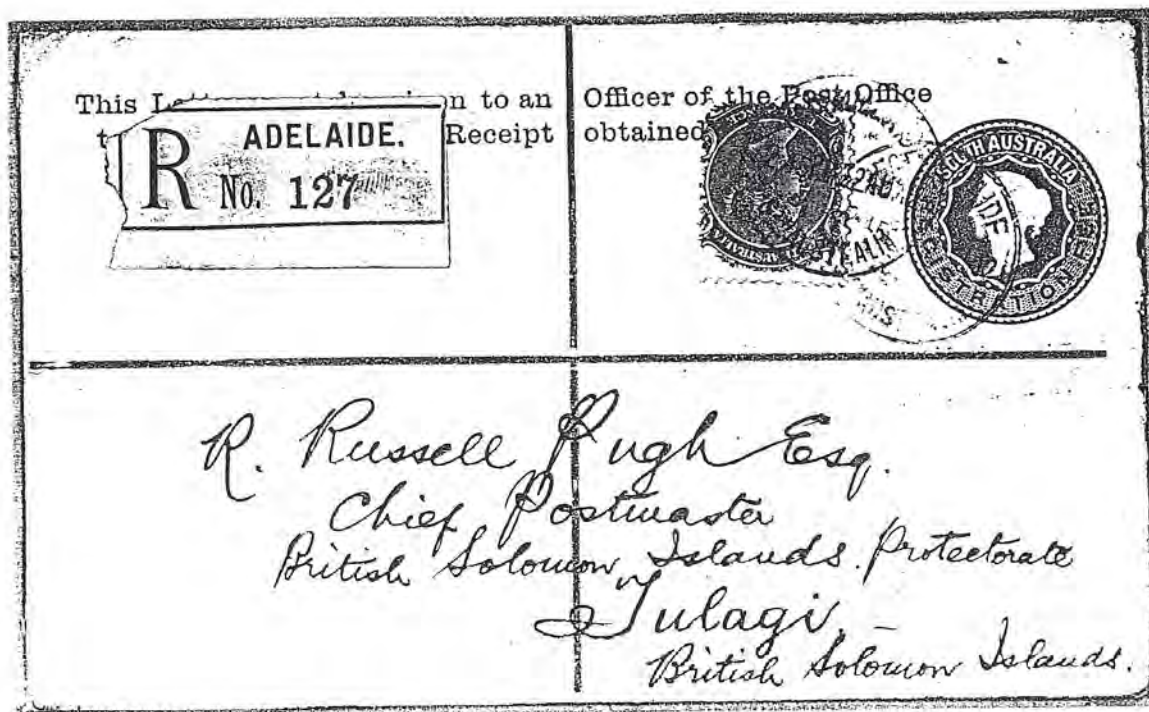
Collecting these envelopes is quite difficult. The relatively short period of issue, the low numbers produced and the low interest in stationery collecting at the time have all combined to make the surviving numbers very few. I would estimate that less than a hundred of each still survive. Mint sets are available but used examples are much scarcer for all but the 1d issue. The ½d envelope used without make-up adhesives is very rare - as is the 2d envelope used in the correct period. The 2d envelope was used for double weight letters to inland or British Empire addresses and the ½d rate was for printed matter - i.e. junk mail.



A scarce example of the 1/2d envelope used without additional adhesives for the printed matter rate. A '20 POSTED' handstamp is beneath the postmark at top left.

Collectable uses of the envelopes would include those in combination with interstate or Commonwealth stamps and those used in other states. One extraordinary registered envelope is known used at Rabaul in 1915 - presumably taken there by a serviceman.

Another surprising example of the registration envelope is the illustrated example used to the British Solomon Islands.



The printing figures given above reveal that there were two printings of the registration envelope - 7,958 in July 1911 and 8,000 in September 1911. There are two identifiable types of envelope but as the earliest dated copy is November 1911 it is impossible to tell which is which. One printing has a dark green cross on the reverse of the envelope and the flap is 56mm in length. The other printing has a pale green cross and a 43mm flap.

The end for these issues came with the issue in 1913 of envelopes bearing the Kangaroo design. Interestingly, the same stock was used for these issues as for the state issues. The text of the registration envelope, originally pinched from the Victorian issue, was used again for the kangaroo issue.

The Philatelic Bulletin of October 1956 records that the ½d, 1d and 2d dies used to make the electros were destroyed on 2.7.1913 as were the electros for embossing and printing the registered envelopes. Details of the fate of the other electros are less easy to determine as 253 ½d; 281 1d and 241 2d electros were also destroyed on that date. These figures would all include 240 electros found in the stamp plates leaving 13 ½d; 41 1d and 1 2d. The ½d and 1d figures would include wrapper and post card electros but there is still one 2d electro unaccounted for.

This article is jointly published with The Shilling Violet, the Journal of the South Australia Study Group of the Philatelic Society of South Australia. The quarterly journal deals with all aspects of South Australian Philately and is now in its tenth year. For subscription details write to Anthony Presgrave, PO Box 317, Goolwa, SA, 5214 or Martin Walker, PO Box 247, Torrensville Plaza, SA, 5031.

FROM OUR CONTEMPORARIES

The February and April issues of the *Postal Stationery Notes* (the newsletter of the Postal Stationery Study Group of the British North American Philatelic Society) included articles on:

- Another New Private Precancel Postcard
- Variety on Webb P9
- The Internet Again
- The Plates of P1 And P2 [the first Canadian postcards]
- Envelope Errors
- XPRESSPOST New Look
- ERP Update
- Columbia House Special Order Envelopes
- Meteorological Return Labels
- New Railway Pictorial Cards
- 1961 Aerogramme Variety
- A Newfoundland Question

The May and June issues of *Gibbons Stamp Monthly* contains their annual survey of worldwide stationery issues.

The *London Philatelist* for May 1996 contained a report of a display of *Postal Stationery of the French Colonies, Post Offices Abroad and Occupied Territories* given to the Royal of London earlier this year. In his comments, the President remarked how much he appreciated this display where the material was arranged by date rather than by country. The displayer said that he preferred used material so that the postal history of the country was covered as well as the postal stationery.

August 1996

NEW POSTCARDS SEND COLLECTORS BACK TO THE GOOD OLD DAYS!

Martin Walker

Having grown up in an age of standing orders, mail order by credit cards and an Australian Post Office all too eager to part the collector from his or her dollar I've often wondered how the older generation of philatelists ever managed to build their collections. As a collector of modern Australian postal stationery I'm quickly learning how.

With little or no warning Australia Post released a set of 35 pre-paid postcards during December 1995. I first became aware of the impending issue last September when Craig Chappell tipped me off about them. Confirmation of their issue came in October when, during the launch of the Down Under Stamp Issue, I queried Bob Hill, South Australia's Philatelic Officer, about them. He recalled that about 18 months prior each state had been requested to submit suitable postcard views together with related stamp designs. The stamps chosen did not need to be current issues and Bob particularly mentioned that he had submitted a view of the Adelaide GPO with the South Australian stamp of 1898 which featured the building. Armed with this information I kept a watchful eye on the postcard stands at the Post Shops around Adelaide and asked the friendly staff at my local post office (Torrensville Plaza, SA) to advise when the cards were issued.

Nothing much happened until the first week in December when Craig Chappell spotted a set of six cards at the Brisbane GPO shop featuring Queensland scenic spots. This was on December 8th and enquires by Craig revealed that they went on sale on the 6th (a Wednesday). This prompted a frantic ring around the country in order to secure first day of issue cancels in each state. This was necessary as each state's views were only available in that state. Derek Pocock in Perth was the next successful enquirer. He discovered the Western Australian views in Perth postcard racks during the following week and enquires made by Derek revealed that they were put on sale early in the week commencing December 11th. A more exact date could not be determined. Derek also had difficulty finding an obliging postal officer to datestamp the cards and resorted to addressing and posting the cards to get dated copies. Unfortunately, of the four cards sent to me only two received any postal marking and neither of them showed a readable date! If any WA readers can help with cards used in early to mid December several collectors around the country would be grateful.

Also during the second week of December my local post office advised that they had received a circular announcing that four South Australian and two Northern Territory view cards would soon be available and an order was placed. I also asked Kevin Battersby, one of the Adelaide stamp dealers who dealt with the Adelaide philatelic sales section, to place an order for a set cards cancelled on the first day of issue in SA - assuming that they would go on sale in the city before anywhere else. (Being involved in the retail trade the period before Christmas doesn't allow any time for chasing around post offices!) The circular revealed that the cards were being issued for the tourist trade and every effort was to be made by postal managers to have the cards in stock prior to the summer holiday period.

Meanwhile, Richard Peck was keeping watch in Sydney and on the 14th December six cards appeared in some Sydney post shops. Ian McMahon, John Sinfield and Malcolm Groom kept watch in Canberra, Melbourne and Hobart but to no avail. John Sinfield had discovered from Australia Post that the cards for Queensland and Western Australia had been despatched from

the printer first as delivery to these states took the longest amount of time from Victoria. They were apparently sent on December 4th indicating that each state didn't waste any time in issuing them.

The cards ordered by Torrensville Plaza SA arrived on December 19th but a phone call to the Adelaide dealer revealed that the cards had not yet been received, let alone issued, by the GPO. Four view cards were placed on sale in Hobart the day before but according to Malcolm Groom none were sold on the Monday and he bought the first cards sold in Tasmania on the 19th. Later that week Ian McMahon received the complete set of 35 from Melbourne Philatelic Sales - a result of his standing order. By this time the cards for the ACT and Victoria had still to be issued in Canberra or Melbourne. According to John Sinfield Victoria's set of six were placed on sale at the GPO shop and the National Philatelic Centre on December 21st.

When I collected my cards from the Adelaide dealer I was astonished to see them datestamped November 1st, 1995. When I queried this with Kevin he related the story that when the cards arrived at the GPO the staff rang him to advise that they could not postmark them for him as the stamps pictured on the cards were not valid for postage! When Kevin finally managed to convince them that the address side of the card was the side to postmark they then asked what date he wanted on the postmark. "The first day of issue!" was Kevin's reply and when he was asked to provide the date he suggested that they were the ones who should know and to look it up themselves. Apparently, November 1st is the date that the details of the post cards were loaded onto Australia Post Electronic Point of Sale system and this is where the philatelic staff at Adelaide's GPO probably got the date.

The nation's capital still lagged behind the rest of the country and the three cards featuring views of Canberra were first seen in Sydney on January 2nd, 1996 and were finally issued in the ACT on January 10th - mainly as a result of Ian McMahon continually asking for them. Unfortunately I don't have a contact in the Northern Territory so I haven't been able to determine if or when the two cards featuring NT views were put on sale there.

The full list of views follows.

APN	View	9312650107239	Canberra/Parliament House
9312650107154	Sydney's Centrepont Tower	9312650107246	Flinders Street Station
9312650107161	Blue Mountains National Park	9312650107253	Melbourne by Night
9312650107178	Bondi Beach	9312650107260	Phillip Island
9312650107185	Sydney Harbour	9312650107277	Yarra River
9312650107192	Sydney Opera House	9312650107284	Melbourne Trams
9312650107208	Sydney The Rocks	9312650107291	Royal Botanical Gardens
9312650107215	Canberra Lake	9312650107307	St. Stephen's Cathedral
	Burley Griffin	9312650107314	Brisbane GPO
9312650107222	Canberra/War Memorial	9312650107321	Fraser Island
		9312650107338	St. Lucia University
		9312650107345	Botanical Gardens

August 1996

9312650107352	Great Barrier Reef Bridge	9312650107437	Dolphins at Monkey Mia
9312650107369	Uluru National Park	9312650107444	Native Kangaroo Paws
9312650107376	Flinders Ranges, Wilpena	9312650107451	Hobart Constitution Dock
9312650107383	River Murray Paddle Steamer	9312650107468	Mt. Wellington
9312650107390	City of Churches	9312650107475	Mt. Field National Park
9312650107406	Katherine Gorge	9312650107482	Wine Glass Bay
9312650107413	Bungle Bungle National Park	9312650109042	Statue of Captain Light
9312650107420	City Skyline with Swan River		

Why the numbering of the final card listed is so far out of sequence is a mystery, as is Colonel Light's demotion.

The matching of stamps to views is apparent in most cases although some better matches could have made in my opinion. The matching of the 20¢ stamp featuring Sturt's Desert Pea with a view of a paddle steamer is curious as there is an issue featuring a steamer. Poor Tasmania must be planning a campaign for more representation on stamps as two of that state's designs have used the 1/2d Tasmanian Tiger stamp. The use of two Australian Antarctic Territory issues complements the dolphins and penguin issues nicely and I wonder if we may see future issues bearing stamps of other territories, or perhaps countries, if they can be matched with a saleable touristy view. We may yet see that view of the Adelaide GPO paired with the 1898 colonial stamp issue!

PS Since writing the piece on the new Australia Post post cards Bevan Alexander of Chapel Street Collectables has shown me sets of the cards obtained by him by mail and telephone order. His sets are all reputedly cancelled on first day of issue and it seems that not only the staff in Adelaide were caught out by the November 1st date as all the cards received by Bevan were cancelled with the same date except the Tasmanian views. These were cancelled October 16th, 1995!

Bevan also informed me of the reprinting of the card depicting Colonel Light's statue in Adelaide. The inscription has been altered to show his correct rank. These cards were first noticed during April 1996 and there is some confusion concerning the fate of the original cards bearing the error. According to Bob Hill of Australia Post the error was noticed on January 5th, 1996 and an order to withdraw cards from stock was apparently sent on January 17th. I was still able to find the erroneous card in racks as late as May 1996 and I believe that the withdrawal was actually only an instruction to the distributor to stop issuing the card with the error. Subsequent to my enquires I have learned that a number of post offices were telephoned with an instruction to remove any remaining cards bearing the error from sale.

The cards appear to be selling well and I would warn aspiring collectors to keep a constant look at post card racks for reprints, overprints and new issues as all may come without any warning.

LISTING OF AUSTRALIAN NON-DENOMINATED POSTAL STATIONERY (PART 5)

Ian McMahon

Postcards (continued)

1993
 (\$1) Australia Post sponsored Athletes
 Cathy Freeman on track at Stuttgart
 (-) Nicole Stevenson

Note: These cards were produced by the Communications Division of Australia Post and while they pre-paid postage they were intended to be either given away free or used to reply to letters from fans of the athletes. The Cathy Freeman card was however sold at the temporary post office at the Stawell Gift.

1994(?) Cards as for the 1992 wildlife issue but with the new style printed air mail 'label'.

Maximum cards
 (\$1) echidna
 (\$1) koala
 (\$1) brushtail possum
 (\$1) wombat

13 January 1994
 (\$1) Australia Day
 Shoalhaven River Bank
 (\$1) Wimmera
 (\$1) Lagoon, Wimmera
 (\$1) White Cockatoos in Paddock

Maximum cards
 (-) Shoalhaven River Bank
 (-) Wimmera
 (-) Lagoon, Wimmera
 (-) White Cockatoos in Paddock

(Set price: \$6.50)

Note: From this issue onwards many of the adhesive issues were accompanied by postcards (which were sold singly for \$1 each) with an illustration of an adhesive stamp from the issue as well as the maximum cards. Both types of cards prepaid postage at the postcard rate for delivery to any destination in the world.

13 January 1994
 (\$1) Huskies
 (\$1) Husky
 (\$1) Dog Team
 (\$1) Husky
 (\$1) Husky Team
 Maximum cards
 (-) Husky

(-) Dog Team
 (-) Seated Husky
 (-) Three Huskies
 (Set price: \$3.50)

Note: Although the adhesive issue was an AAT issue, the stamp area on these postcards is inscribed 'Pre-Paid Australia' and they must therefore be regarded as Australian issues.

20 January 1994
 (\$1) Centenary of Life Saving
 (\$1) Vigilance
 (\$1) Education
 (\$1) Drill
 (\$1) Fitness

Maximum cards
 (-) Vigilance
 (-) Education
 (-) Drill
 (-) Fitness
 (Set price: \$5.00)

3 February 1994
 (\$1) Thinking of You
 (\$1) Rose
 (\$1) Tulips
 (\$1) Poppies

Note: These cards have been reprinted with the printed airmail 'label' a different shade of blue.

Maximum cards
 (-) Rose
 (-) Tulips
 (-) Poppies
 (Set Price: \$3)

10 March 1994
 (\$1) Wildlife
 (\$1) Crocodile
 (\$1) Pelican
 (\$1) Emu

Note: Reprints of these cards have bright blue air mail 'labels'.

Maximum cards
 (-) Crocodile
 (-) Pelican
 (-) Emu
 (Set price: \$4)

8 April 1994
 (\$1) Friendship Bridge, Thailand and Laos
 Friendship Bridge

August 1996

	(\$1)	Friendship Bridge (Maximum card)	(Set price: \$5)	
8 April 1994	(\$1)	Queens Birthday	11 August 1994	Wartime Prime Ministers of Australia
	(\$1)	Queens Birthday (Maximum card)	(\$1)	Menzies
			(\$1)	Fadden
			(\$1)	Curtin
			(\$1)	Forde
14 April 1994		International Year of the Family	(\$1)	Chifley
	(\$1)	Family with Dog	Maximum cards	
	(\$1)	Aboriginal Family	(-)	Menzies
	(\$1)	Family on Beach	(-)	Fadden
	Maximum cards		(-)	Curtin
	(-)	Family with Dog	(-)	Forde
	(-)	Aboriginal Family	(-)	Chifley
	(-)	Family on Beach	(Set price: \$4.50)	
	(Set Price: \$3.50)			
12 May 1994		Koalas and Kangaroos	29 August 1994	Aviation Feats
	(\$1)	red kangaroo	(\$1)	Lawrence Hargraves
	(\$1)	kangaroo with joey	(\$1)	Ross and Keith Smith
	(\$1)	grey kangaroos	(\$1)	Stanley Goble & Ivor McIntyre
	(\$1)	koala family	(\$1)	Freda Thompson
	(\$1)	koala on ground	Maximum cards	
	(\$1)	koala in tree	(-)	Lawrence Hargraves
			(-)	Ross and Keith Smith
Note: Cards from this series exist reprinted with the printed airmail 'label' a different shade of blue.			(-)	Stanley Goble & Ivor McIntyre
			(-)	Freda Thompson
			(Set price: \$6)	
	Maximum cards			
	(-)	red kangaroo	8 September 1994	Frama
	(-)	kangaroo with joey	(\$1)	Waratah
	(-)	grey kangaroos	(\$1)	Waratah (maximum card)
	(-)	koala family		
	(-)	koala on ground	28 September 1994	Zoos
	(-)	koala in tree	(\$1)	Scarlet Macaw
	(Set price: \$5)		(\$1)	Cheetah
			(\$1)	Fijian Crested Iguana
9 June 1994		Centenary of Votes for Women	(\$1)	Orang utang
	(\$1)	Suffragists	(\$1)	Asian Elephant
	(\$1)	Suffragists (maximum card)	Maximum cards	
			(-)	Scarlet Macaw
14 July 1994		Bunyips	(-)	Cheetah
	(\$1)	Aboriginal Bunyip	(-)	Fijian Crested Iguana
	(\$1)	Nature Spirit Bunyip	(-)	Orang utang
	(\$1)	Bunyip of Berkeley's Creek	(-)	Asian Elephant
	(\$1)	Natural History Bunyip	(Set price: \$5.50)	
	Maximum cards			
	(-)	Aboriginal Bunyip	31 October 1994	Christmas
	(-)	Nature Spirit Bunyip	(\$1)	Madonna and Child
	(-)	Bunyip of Berkeley's Creek	(\$1)	Magi and horse
	(-)	Natural History Bunyip	(\$1)	Magi with Joseph
			(-)	Magi with Mary, Joseph and Child
			Maximum cards	
			(-)	Madonna and Child
			(-)	Magi and horse

Postal Stationery Collector

(-)	Magi with Joseph	Maximum cards	
(-)	Magi with Mary, Joseph and Child	(-)	Red Heart
(Set price: \$5.50)		(-)	Red and Gold Heart
		(-)	Gold Heart
		(Set price: \$3)	
31 October 1994	50th anniversary Sydney to Hobart Yacht Race	9 February 1995	Endeavour
(\$1)	Yachts leaving Sydney	(-)	Endeavour Replica
(\$1)	End of Race	(-)	Bark Endeavour
Maximum cards		Maximum cards	
(-)	Yachts leaving Sydney	(\$1)	Endeavour Replica
(-)	End of Race	(\$1)	Bark Endeavour
(Set price: \$2)		(Set price: \$2)	
2 November 1994	Triangular ATM stamps	16 March 1995	Fifty Years of the National Trust
(\$1)	Kangaroo	(\$1)	Plate and Clock
Note: This card was also used in 1995 in a mail out to all Australian Stamp Bulletin readers.		(\$1)	Doll and Chair
(-)	Kangaroo (maximum card)	(\$1)	Teapot and Statuette
		(\$1)	Bowl and Urn
1994	Australia Post sponsored Athletes	Maximum cards	
(-)	Cathy Freeman on victory dias at Commonwealth Games, Victoria	(-)	Plate and Clock
(-)	Cathy Freeman on track	(-)	Doll and Chair
(-)	Nicole Stevenson at Commonwealth Games, Victoria	(-)	Teapot and Statuette
(-)	Collage of Australia Post sponsored Olympians	(-)	Bowl and Urn
		(Set Price: \$6)	
Note: These cards were produced by the Communications Division of Australia Post and while they pre-paid postage were either given away free or used to reply to letters from fans of the athletes.		March 1995	Australian wildlife
		(\$1)	echidna
		(\$1)	koala
		(\$1)	brushtail possum
		(\$1)	wombat
		(\$1)	platypus
		(\$1)	kookaburra
		(\$1)	eastern grey kangaroo
		Note: these cards are based on the adhesive wildlife stamps issued on 13 August 1992 and 12 August 1993.	
12 January 1995	Australia Day	5 April 1995	Opals
(\$1)	Back Verandah	(\$1)	Light Opal
(\$1)	Skull Springs Country	(\$1)	Black Opal
(\$1)	Outcamp	Maximum cards	
(\$1)	Kite Flying	(-)	Light Opal
Maximum cards		(-)	Black Opal
(-)	Back Verandah	(Set Price: \$4.50)	
(-)	Skull Springs Country	20 April 1995	Queens Birthday
(-)	Outcamp	(\$1)	Queen Elizabeth II (maximum card)
(-)	Kite Flying		
(Set price: \$5)		20 April 1995	Australia Remembers
		Maximum cards	
30 January 1995	St Valentinc's Day	(-)	Sir Edward Dunlop
(-)	Red Heart	(-)	Ms Jessie Vasey
(-)	Red and Gold Heart	(-)	Tom Derrick
(-)	Gold Heart	(-)	Rawdon Middleton
		(Set price: \$4)	

August 1996

11 May 1995 50th Anniversary of
the United Nations
(\$1) UN (maximum card)

8 June 1995 Centenary of Cinema
(\$1) The story of the Kelly
Gang
(\$1) On our Selection
(\$1) Jedda
(\$1) Picnic at Hanging
Rock
(\$1) Strictly Ballroom
Maximum cards
(-) The story of the Kelly
Gang
(-) On our Selection
(-) Jedda
(-) Picnic at Hanging
Rock
(-) Strictly Ballroom
(Set price: \$5)

15 June 1995 Whales and Dolphins
(\$1) Humpback Whale
(\$1) Hourglass Dolphin
(\$1) Minke Whale
(\$1) Killer Whale

Note: The Minke Whale and Humpback Whale
cards exist overprinted 'Greetings from Hervey
Bay' in gold (issued 3/96).

Maximum cards
(-) Humpback Whale
(-) Hourglass Dolphin
(-) Minke Whale
(-) Killer Whale
(Set price: \$4.50)

13 July 1995 People with
Disabilities
Maximum cards
(-) blind person
(-) person in wheelchair
(Set price: \$2)

10 August 1995 Australia Remembers II
Maximum cards
(-) Goldsworthy
(-) Waters
(-) Savage
(-) Collins
(Set price: \$4)

10 August 1995 Peace
Maximum cards
(-) Star
(-) Angel
(-) Flag
(Set price: \$4)

1 September 1995 Joint Issue with China
(\$1) Koala
(\$1) Panda
Maximum cards
(-) Koala
(-) Panda
(Set price: \$2)

7 September 1995 Medical Science
(-) Viruses
(-) Radiology
(-) Vision
(-) Antibiotics
(Set price: \$6)

3 October 1995 The World Down Under
(\$1) Turtle
(\$1) Angelfish
(\$1) Potato Cod
(\$1) Giant Trevally
(\$1) Tiger Shark

Note: No marlin postcard was issued. The Turtle,
Potato Cod and Giant Trevally cards exist
overprinted 'Greetings from Hervey Bay' (issued
3/96) while all five exist overprinted 'Greetings
from Townsville Aquarium' and 'Greetings from
Airlie Beach' (issued 5/96).

Maximum cards
(-) Turtle
(-) Angelfish
(-) Potato Cod
(-) Giant Trevally
(-) Marlin
(-) Tiger Shark
(Set price: \$5.50)

20 October 1995 Greetings from Brisbane
(\$1) Turtle
(\$1) Angelfish
(\$1) Potato Cod
(\$1) Giant Trevally
(\$1) Tiger Shark
(\$1) Koala (issued 27 October)

Note: Besides bearing an overprint ('Greetings
from Brisbane') on the reverse of the card in gold,
these cards (and those that follow) differ from the
earlier cards (and from each other) in having
different barcodes.

20 October 1995 Greetings from
Sunshine Coast
(\$1) Turtle
(\$1) Angelfish
(\$1) Potato Cod
(\$1) Giant Trevally
(\$1) Tiger Shark
(\$1) Koala (issued 27 October)

Postal Stationery Collector

20 October 1995	Greetings from Gold Coast	(\$1)	(\$1)	Centrepoint Tower QLD: St Stephens Cathedral
	Turtle	(\$1)	(\$1)	QLD: Botanical Gardens
	Angelfish	(\$1)	(\$1)	QLD: Great Barrier Reef
	Potato Cod	(\$1)	(\$1)	QLD: St Lucia University
	Giant Trevally	(\$1)	(\$1)	QLD: University of Queensland (reprint)
	Tiger Shark	(\$1)	(\$1)	QLD: Fraser Island
	Koala (issued 27 October)	(\$1)	(\$1)	QLD: GPO Brisbane ('Queensland')
20 October 1995	Greetings from Townsville	(\$1)	(\$1)	QLD: GPO Brisbane ('Queensland')
	Turtle	(\$1)	(\$1)	SA: Statue of Captain Light
	Angelfish	(\$1)	(\$1)	SA: Statue of Colonel Light (reprint with corrected inscription)
	Potato Cod	(\$1)	(\$1)	SA: City of Churches
	Giant Trevally	(\$1)	(\$1)	SA: Ayres Rock
	Tiger Shark	(\$1)	(\$1)	SA: Katherine Gorge
	Koala (issued 27 October)	(\$1)	(\$1)	SA: Flinders Ranges Wilpena Pound
20 October 1995	Greetings from Great Barrier Reef	(\$1)	(\$1)	SA: River Murray Paddle Steamer
	Turtle	(\$1)	(\$1)	TAS: Mt Field National Park
	Angelfish	(\$1)	(\$1)	TAS: Wine Glass Bay
	Potato Cod	(\$1)	(\$1)	TAS: Hobart Constitution Dock
	Giant Trevally	(\$1)	(\$1)	TAS: Mt Wellington
	Tiger Shark	(\$1)	(\$1)	VIC: Melbourne Trams
20 October 1995	Greetings from Cairns	(\$1)	(\$1)	VIC: Yarra River
	Turtle	(\$1)	(\$1)	VIC: Flinders St Station
	Angelfish	(\$1)	(\$1)	VIC: Melbourne by Night
	Potato Cod	(\$1)	(\$1)	VIC: Royal Botanical Gardens
	Giant Trevally	(\$1)	(\$1)	VIC: Philip Island
	Tiger Shark	(\$1)	(\$1)	WA: Bungle Bungle
	Koala (issued 27 October)	(\$1)	(\$1)	WA: Ranges National Park
1 November 1995	Christmas	(\$1)	(\$1)	WA: Dolphins at Monkey Mia
	Madonna and Child	(\$1)	(\$1)	WA: City Skyline with Swan River
	Angel	(\$1)	(\$1)	WA: Native Kangaroo Paws
	Three rejoicing angels	(\$1)	(\$1)	
	Maximum cards	(\$1)	(\$1)	
	(-) Madonna and Child			
	(-) Angel			
	(-) Three rejoicing angels			
	(Set price: \$3.50)			
December 1995 - January 1996	Pictorial Postcards	(\$1)	(\$1)	
	ACT: Lake Burley Griffin	(\$1)	(\$1)	
	ACT: War Memorial	(\$1)	(\$1)	
	ACT: Parliament House	(\$1)	(\$1)	
	NSW: Bondi Beach	(\$1)	(\$1)	
	NSW: Blue Mountains National Park	(\$1)	(\$1)	
	NSW: Sydney Harbour Bridge	(\$1)	(\$1)	
	NSW: The Rocks	(\$1)	(\$1)	
	NSW: Sydney Opera House	(\$1)	(\$1)	
	NSW: Sydney's	(\$1)	(\$1)	

Note: In general cards were only issued in the state related to the view on the card; ACT and NSW cards were issued in both the ACT and NSW. Issue dates: ACT 2/1/96, NSW 19/12/95, QLD 6/12/95, SA 19/12/95, TAS 19/12/95, VIC 21/12/95. Most cards were reprinted in March-May 1996 with many showing colour variations. Some of the reprints included corrected inscriptions.

August 1996

9 January 1996, Lunar New Year.		(\$1)	Collingwood
	Chinese dragon	(\$1)	Essendon
Note: This card was issued in conjunction with the Christmas Island Lunar New year adhesive issue but is inscribed 'Postage Paid Australia'.		(\$1)	Fitzroy
		(\$1)	Footscray
		(\$1)	Fremantle
		(\$1)	Geelong
16 January 1996 Australia Day		(\$1)	Hawthorn
Maximum cards		(\$1)	Melbourne
(-) Margaret Preston		(\$1)	North Melbourne
(-) Lina Bryans		(\$1)	Richmond
(-) Grace Cossington Smith		(\$1)	St Kilda
(-) Vida Lahey		(\$1)	Sydney
(Set price \$5.50)		(\$1)	West Coast
		Maximum cards	
		(-)	Adelaide
30 January 1996	Hearts and Roses	(-)	Brisbane
(\$1)	Hearts and Roses	(-)	Carlton
(-)	Hearts and Roses	(-)	Collingwood
	(maximum card)	(-)	Essendon
		(-)	Fitzroy
26 February 1996	Military Aviation	(-)	Footscray
Maximum cards		(-)	Fremantle
(-) Beaufighter		(-)	Geelong
(-) Hawker FB		(-)	Hawthorn
(-) Bell Kiowa		(-)	Melbourne
(-) Hornet		(-)	North Melbourne
(Set price: \$4)		(-)	Richmond
		(-)	St Kilda
		(-)	Sydney
14 March 1996	World Heritage Sites	(-)	West Coast
(\$1)	Tasmanian Wilderness	(-)	
(\$1)	Willandra Lakes	(-)	
(\$1)	Naracoorte Fossil Cave	(Set price: \$15)	
(\$1)	Lord Howe Island		
Maximum cards		9 May 1996	Nature of Australia
(-) Tasmanian Wilderness		(\$1)	Leadbeaters Possum
(-) Willandra Lakes		(\$1)	Powerful Owl
(-) Naracoorte Fossil Cave		(\$1)	Blackwood Wattle
(-) Lord Howe Island		(\$1)	Mountain
(Set price: \$5)			Ash and fern
		Note: These cards were also sold with the heritage book <i>Nature of Australia</i>	
		Maximum cards	
22 March 1996	Joint issue with Indonesia	(-)	Leadbeaters Possum
Maximum cards		(-)	Powerful Owl
(-) Australian Spotted Cuscus		(-)	Blackwood Wattle
(-) Indonesian Bear Cuscus		(-)	Mountain
(Set price: \$2)		(-)	Ash and fern
		(Set price: \$9)	
11 April 1996	Queens Birthday		
(-)	Queen Elizabeth II		
23 April	Centenary of the AFL		
(\$1)	Adelaide		
(\$1)	Brisbane		
(\$1)	Carlton		
		ERRATA to Part 4	
		Please note the following corrected entries from part 4:	
		12 April 1990	ANZAC Tradition
		(-)	At the Front
		(-)	They also Serve
		(-)	Lest We Forget

Postal Stationery Collector

(-)	Casualties	12 August 1993	Wildlife
(-)	News From Home	(-)	Platypus
		(-)	Kookaburra
16 May 1990	Gold Fever	(-)	Eastern Grey
(-)	Off to the Diggings	(-)	Kangaroo
(-)	The Diggings	(-)	Pink Cockatoo
(-)	Panning the Gold		
(-)	Gold Commissioners Tent	4 February 1993	Dreamings
(-)	The Gold Escort	(-)	Wild Onions
			Dreaming
14 February 1992	National Philatelic	(-)	Yam Plants
	Centre 'Computer	(-)	Goose Egg Hunt
	Generated Postcard'	(-)	Kalumpiwarra-
(\$1)	5/- Sydney Harbour		Ngulalintji
	Bridge Stamps		
13 August 1992	Australian Wildlife		
(-)	Echidna		
(-)	Koala		
(-)	Brushtail Possum		
(-)	Wombat		

Acknowledgments: The assistance with this section from Craig Chappell, John Crowsley and John Sinfield and Martin Walker is gratefully acknowledged.



POSTAGE PRE-PAID AUSTRALIA



FOR POSTING IN AUSTRALIA AND DELIVERY WORLDWIDE



Photograph: Australian Picture Library
J.P. & E.S. BAKER
Queensland/St. Lucia University



POSTAGE PRE-PAID AUSTRALIA



FOR POSTING IN AUSTRALIA AND DELIVERY WORLDWIDE

Photograph: Australian Picture Library
J.P. & E.S. BAKER
The University of Queensland

August 1996

GREAT EVENTS IN POSTAL STATIONERY!

Judy Kennett

The event of the month as far as historical postal stationery is concerned was the arrival in Australia of the reprint (1996) of Dr Ascher's 'Grosser Ganzsachen Katalog', with a pricelist updated to 1996. The last edition of this catalogue was in 1928. The comments which follow are from my perspective - a collector of postal stationery of two East European countries, who has only a basic knowledge of German. The bounds that I set for my collections of Hungarian and Romanian postal stationery include the period covered by Dr Ascher's catalogue, that is, up to the late 1920s. I will also compare the treatment of some features in this catalogue, with that used in the Michel catalogue.

The appearance of the catalogue is very neat and professional. The pages are in A5 format, housed in a hardback four-ring binder. The catalogue comprises listings for Germany, followed by alphabetical listings for countries of the world - as existed in the late 1920s. Each entry contains descriptions and dates of issue for various printings, and in many cases, detailed notes. Boxes are provided, in which the collector may record holdings, mint and used. In other words, it is also intended to serve as a checklist. The 'Preistabelle 1996' - pricelist for 1996 - is A5 softbound, with a light orange coloured cover. It is arranged in the same order as the catalogue, with sub-headings under country names for types of postal stationery. The item numbers assigned in the catalogue are the keys to using the pricelist. The interest for Australian postal stationery collectors (and dealers!) lies in the suggested prices. Some of us might be surprised to see the high values assigned by the compilers to the postal stationery we collect. Obviously the worth of postal stationery is well recognised in Europe, and the importance of its role in philately is appreciated. It must be remembered, however, that these are European prices, and not necessarily applicable in the Australian market. As a test, I compared the prices assigned in the Preistabelle to those in Michel Ganzsachen-Katalog Europa Ost, for certain items from the countries I collect. They are very similar.

I prefer the arrangement of the listings in Dr Ascher's catalogue to that used by Michel. The Ascher catalogue groups items according to the type of postal stationery, eg. all postcards in one chronological group. Michel arranges various types of stationery by period, generally relating to stamp designs or to regimes. Michel would win on the score of clear illustrations, and in many cases, the complete card or envelope is shown. It must be remembered that the Michel catalogues are the product of modern technologies in publishing. Dr Ascher's catalogue is a replica of the original, and looks old fashioned. However, Ga Ka Philatelistischer Fachverlag (KarlHeinz Erner) has performed a great service to postal stationery collectors of the world by republishing the catalogue, and making the information it contains available again to a much wider circle.

After many years of depending on the Higgins & Gage postal stationery catalogue, which is incomplete for some areas, and has prices that have not been revised for many years, we now have a good source of reference for technical information, as well as up-to-date values for the European market. Do any members of the PSSA who have seen a copy of the new Ascher Katalog have other comments to make? Please send them to the Editor in the usual way.

Ed Note: Ga Ka also publish other stationery catalogues including Ganzsachen der Frankreich-Kolonien-Gebiete, Germany (1925-1945), The Netherlands, Sweden, Estonia & Switzerland.

AUSTRALIAN OFFICIAL POST OFFICE STATIONERY

Ian McMahon

Official Australia Post stationery is a somewhat neglected field but three interesting items of official stationery are illustrated below:

- Security Post envelope used from Greenwell Point to Nowra;
- An official international express post (EMS) envelope; and a
- 5d lettersheet overprinted for use as a form to advise clients of underpaid mail, used in 1961.



1961



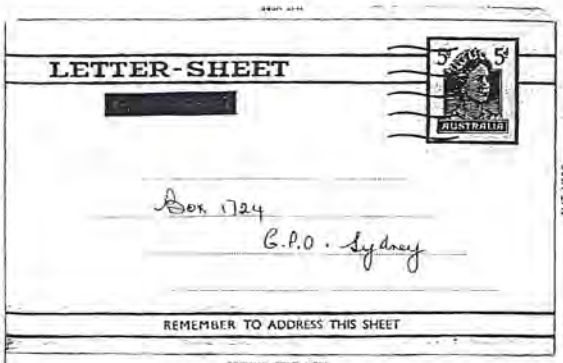
SIGNATURE REQUIRED ON DELIVERY

August 1996

PLEASE FLAP BEFORE MOISTENING ADHESIVE



YOU PAID . . . 5⁰⁰
YOU SHOULD HAVE PAID . . . 8⁰⁰
TAX PAYABLE IS . . . 3⁰⁰



REMEMBER TO ADDRESS THIS SHEET

SECOND FOLD HERE

IF UNDELIVERED RETURN TO

The Director
Posts and Telegraphs
Sydney, N.S.W.

REMEMBER TO ADDRESS THIS SHEET

IF SENT BY AIRMAIL TO OVERSEAS DESTINATIONS THE USUAL AIRMAIL LETTER RATES APPLY. THE SPECIAL AEROGRAMME RATES ARE NOT APPLICABLE.



POSTMASTER-GENERAL'S DEPARTMENT

General Post Office

Dear Sender,

Among the letters found at the G.P.O. today with insufficient postage on them, was one you had posted. As your letter may be urgent, we have forwarded it to the addressee rather than delay it by returning it to you.

In this particular case, however, under Postal Laws the addressee will have to pay double the postage deficiency before the letter is delivered. For your information, the name and address shown on your letter, as well as the amount to be collected in this instance, are shown over the page.

You will agree that it would be easy for anyone receiving such mail to interpret it as a lack of care or courtesy on the part of the sender. As I know you do not want your mail to give this impression, may I suggest that your mailing procedure be checked to ensure that future underpayments do not occur.

If you wish to make enquiries concerning rates of postage would you please get in touch with your local Postmaster, or, if that is not convenient, ring Mr. H. Rough at 20 4260 during business hours.

Yours faithfully,
J. R. Hutchison

J. R. HUTCHISON,
Director,
Posts and Telegraphs.

11 7 MAY 1961

NEW ISSUES AND OTHER BITS AND PIECES

AUSTRALIA

Pictorial Postcards

Reprints of many cards from this series have now appeared. In some cases there are very minor colour differences but in many cards there are more substantial differences. Craig Chappell reports that the following Queensland changes were reprinted with corrections made to the inscriptions:

- 'University of Queensland' instead of 'St Lucia University'
- GPO Brisbane card: 'Queensland' corrected to 'Queensland'

Martin Walker has noted elsewhere that the inscription on the South Australian *Captain Light* card has been corrected to give him his correct rank of Colonel.

Queensland Tourist Postcards

Craig Chappell advises that underwater world postcards have also been overprinted 'Greetings from Airlie Beach' and 'Greetings from the Townsville Aquarium'. Unlike the original series of Queensland tourist postcards, which all had distinct barcodes, these cards (and the Hervey Bay cards) have the same barcodes as the unoverprinted underwater world cards.

Aerogramme Error

South Australian representative of the study group, Martin Walker, reports the discovery of the current aerogramme portraying Australia's first Aboriginal Fighter Pilot, Warrant Officer Leonard Waters with two colours missing. Omitted are the light blue of the "AIR MAIL PAR AVION/ AEROGRAMME" inscription and the green forming the silhouette of the plane behind the pilot's portrait together with the words "POSTAGE PAID" and "AUSTRALIA". Also affected by the missing colours are all the address lines and the "1945" date beneath the portrait of the fighter. The solitary example of the aerogramme was discovered at a suburban Adelaide postal agency during March 1996 - alas, not by Martin.

Eastern Command Postcard

From Ken Humphreys, a postcard used by the Eastern Command to record enlistment for military service for home defence. Dated 11 March 1941, the card bears a part Newcastle machine cancel with the common slogan 'Address Mail to/Private Box No/It expedites/delivery'. The penny postage would reflect the printed matter rate to 10 December 1941. Ken obtained the card for \$4 at a recent Queensland show.

Commonwealth Reissue Of Divided Queensland Reply Postcards

In the last issue of PSC John Sinfield discussed the Commonwealth reissue of divided states reply cards. A Queensland card (the reply card) was sold in the last Macray-Watson auction for \$5600!

August 1996


 AUSTRALIAN MILITARY FORCES—EASTERN COMMAND

ADDRESS
 PRIVATE


Post Card

A. J. Black
10 Maitland Rd
Islington

Pro Form U 19

Receipt is acknowledged of A.A.F. M. 3A (Enlistment for Military Service for Home Defence).

If you are required to attend for Medical Examination and enlistment you will be notified direct of the time and place of such attendance. In addition press notices will be published.

NOTE.—If you change your address occupation or get married you must **IMMEDIATELY** notify your Area Officer.

Date 11 MAR 1941





Area Officer *W. Hoop*

AIR MAIL PAR AVION
 PROGRAMME





WARRANT OFFICER LEONARD WATERS

 <p>Q96 QUEENSLAND STAMP CONGRESS 1996</p>	 <p>45c Australia</p>	 <p>45c Australia</p>	 <p>45c Australia</p>	<p>Send to : QPC Q96 OVERPRINT 18 Coolcrest Street WYNNUM QLD 4178</p>
<p>SET of 3 'Birds' Pre-Stamped Envelopes (size C6)</p>				<p>___ x SET of 3 MINT @ \$5.00 ___</p>
<p>Supplied by <u>AUSTRALIA POST Overprinted to Order</u></p>				<p>POSTAGE & PACKAGING..... \$1.00</p>
<p>for Q96 - QUEENSLAND STAMP CONGRESS 1996</p>				<p>Don't forget to include your name and address.</p>

POSTAL STATIONERY

Buying and selling all non-Australian material

Our extensive stock always contains interesting items

Want lists invited - write today stating your interests

Fast, friendly service, all correspondence answered

Ian Faber Philatelics

P.O. Box 217, Erindale Centre, ACT 2903

Telephone/Fax: (06) 291 5573 - 24 hours service

International: +61 291 5573

Member - Australasian Stamp Dealers Association