

# *POSTAL STATIONERY*

## *COLLECTOR*

**Journal of the Postal Stationery Society of Australia**

**Volume 6 No 1: Issue No 21**

**May 2000**



## ***THE POSTAL STATIONERY SOCIETY OF AUSTRALIA***

The Postal Stationery Society of Australia has been established to encourage the collecting of postal stationery in Australia and New Zealand and to provide a forum for postal stationery collectors to maintain contact with other stationery collectors and to learn more about their hobby.

The Society is not based in any particular city or state and plans to hold meetings at national and state level exhibitions. Subscription rate for 1999 has been set at \$25 (Australia) and \$40 (Overseas excluding New Zealand which is \$30). For further information please contact the Convenor, Secretary or your State Coordinator. Membership enquiries should be addressed to the Secretary.

### **OFFICE BEARERS:**

CONVENOR: Ian McMahon, PO Box 783, Civic Square ACT 2608  
SECRETARY Judy Kennett, PO Box 40, Jamison ACT 2614  
TREASURER John Crowsley, PO Box 2124, Ascot QLD 4007

### **STATE COORDINATORS**

QLD Bernie Beston, PO Box 26, Redcliffe Qld 4020  
SA Martin Walker, PO Box 247, Torrensville Plaza, SA 5031  
WA Ray Todd, PO Box 158, Dunsborough, WA 6281  
NSW Bernie Doherty, PO Box 18, Waratah NSW  
TAS Malcolm Groom, 225 Warwick Street, West Hobart Tas  
VIC John Sinfield, PO Box 6246 St Kilda Rd Central Vic 3004  
ACT Ian McMahon, PO Box 783, Civic Square ACT 2608  
NZ (North) Barry Scott, 123 Konini Rd, Titirangi, New Zealand  
NZ (South) Robert Samuel, PO Box 394, Christchurch, New Zealand

Web page: <http://www.canberra.starway.net.au/~philatelic/pss.html>

### ***Postal Stationery Collector***

Editor: Ian McMahon

Contributions to the Postal Stationery Collector should be sent to Ian McMahon, PO Box 783 Civic Square ACT 2608. Articles on any postal stationery topic are welcomed and, if possible should also be submitted on 3.5 inch MSDOS disks in any word processing format (Word for Windows preferred). Illustrations should be good quality photocopies. Book reviews, news items, information on new issues and members classifieds are also welcome. Letters to the Editor and comments on articles published are encouraged.

**COPYRIGHT:** The copyright of the contents of the Postal Stationery Collector is held by the Postal Stationery Society of Australia. Items may be reproduced only with the written consent of the Editor.

ISSN 1324-2105

## CONTENTS

	Page
<i>From the Editor</i>	1
<i>Letters to the Editor</i>	2
<i>1910 Queensland Postal View Cards</i> Bernie Beston	4
<i>Australian Postcards - From Colonies To Commonwealth</i> John Sinfield	9
<i>Example Of Late Usage</i> Judy Kennett	14
<i>Souvenir Postcards of Australia (Part 3)</i> Martin Walker and Craig Chappell	15
<i>Canada New Issues</i> Ian McMahon	20
<i>PTPO National Park Envelope</i> Colin Hingston	22
<i>Cinderella Postal stationery</i> Ian McMahon	23
<i>France: Prepaid Envelope With Undenominated 'Stamps' Se-Tenant</i> Derek Brennan	24
<i>Listing Of Australian Non-Denominated Postal Stationery</i> Ian McMahon	25
<i>Literature</i>	26
<i>From the Secretary</i>	27
<i>Treasurer's Report</i>	28
<i>New Issues</i>	28

### **FROM THE EDITOR**

Welcome to the first issue of Volume 6 of the *PSC*.

In this issue we continue John Sinfield's article on Australian postcards. The instalment in this issue deals with the interesting early federal period when separate issues for each of the states continued to be issued. In addition Bernie Beston provides details of another three views on the Queensland 1910 pictorial postcards. The third part of Martin Walker and Craig Chappell's article on Australia Post's unstamped postcards also appears in this issue.

**VICTORIA 2000 or GASC REVISITED**

The Victorian Philatelic Council has for decades conducted an annual *VPC Congress*. Last year the Annual VPC Congress was upgraded to a State Philatelic Exhibition [*Victoria 1999*] for the first time. This year's State Philatelic Exhibition *VICTORIA 2000* will include all classes at a State level as last year, however, in addition a National Postal Stationery Class will be included, as there will be no full National Exhibition this year.

This will be the only opportunity to exhibit National Class Postal Stationery in Australia before October 2001. It is hoped that Postal Stationery collectors will avail themselves of this chance to exhibit this year. Many of the *GASCERS* hopefully will seize the opportunity to give their upgraded GASC entries an airing after a three-year lay-off. Perhaps, the *VICTORIA 2000 Exhibition* will come to be known as *GASC REVISITED*.

*VICTORIA 2000* will be held at Melbourne Park [National Tennis Centre] from 20-22 October 2000. Copies of the prospectus and entry form can be obtained from the Secretary, Victorian Philatelic Council, GPO Box 9800, Melbourne, Vic 3001, or contact John MacDonnell by e-mail at [JohnMacDonnell@Bigpond.com](mailto:JohnMacDonnell@Bigpond.com) for e-mailed copies. Entries close 31 August 2000. Please note that 15-sheet frames will be used at *VICTORIA 2000*. Frame fees are set at \$20 per frame.

**CANBERRA STAMP SHOW 2000**

Canberra Stampshow 2000 (the 11th National Philatelic Convention) was held at Dickson College Canberra on 18-20 March 2000. The Exhibition was a full state level exhibition with five national classes, including the finale of the French Challenge. The Exhibition had only one state-level postal stationery exhibit, A J Lyon's *New Zealand Postal Stationery Postcards, Queen Victoria to George V* which won a Silver-Bronze medal. PSSA did, however, hold a meeting at the show which was attended by about a dozen members. Details of the meeting are given in the Secretary's column. Linda Lee won a free membership of the PSSA as one of the French Challenge prizes.

**LETTERS TO THE EDITOR**

**BEPHILA 2001**

The year 2001 will mark the 100th anniversary of our Society, Berliner Ganzsachen-Sammler-Verein. On the occasion of this jubilee we are organising BEPHILA 2001, the annual Exhibition of the Federation of Berlin Philatelic Societies.



Although this Exhibition will not be purely devoted to postal stationery exhibits, postal stationery will constitute

May 2000

a major part. In addition to a special non-competitive show of postal stationery we offer the opportunity to all Postal Stationery Societies and Study Groups from Germany, Europe and Overseas to present themselves with displays of four frames each.

Therefore, we cordially invite the Postal Stationery Society of Australia to participate in BEPHILA 2001. We should also be delighted to welcome members of the PSSA in Berlin where an appropriate 'world meeting' of postal stationery collectors can take place. We should be pleased to answer further questions and to be of any help to you. Hoping to hear from you in the near future.

Norbert Sehler

Note: Norbert Sehler has also offered us the opportunity to send a short history of the PSSA to him for inclusion in the September/October 2000 issue of 'Die Ganzsache', together with a copy of our new application for membership form.

### **APF Article and States Catalogue**

I was pleased to read the postal stationery article in APF News October 1999 and any publicity for this part of the hobby is a good thing. I think there are several additions you could have made to the article which would facilitate the bridging of the very *large* gap between somebody being interested in starting out and the established specialist collector. This problem is exacerbated in the area of postal stationery because of the lack of information.

An excellent introductory book which I stock for \$20 is "*A Collectors Guide to Postal Stationery*" by Peter Van Gelder. There are I believe, several other Australian societies namely The Printed Collectibles Club based in South Australia and also the Postal History and Postal Stationery Society of Australia, which I think is also based in Adelaide. By far the biggest problem for the beginner is the lack of catalogues. I think the Higgins and Gage catalogue was done up until 1967, Kessler's ends (I believe) in 1961, and of course Ascher was published beyond living memory!

This leads me to the importance to the beginner of easily accessible information, especially for Australia. I think it would be a good idea to write to the editor of the Australasian Stamp Catalogue to continue to place pressure on him to update the listings. If enough people write then the current appalling situation in relation to the stationery listing in the catalogue may be rectified.

There is also the importance of listing dealers who stock postal stationery. This is probably the biggest problem faced by the beginner, in that they do not know who to contact in order to start collecting. Very often a dealers list of stationery will be the catalyst in encouraging them to make the actual decision to begin. In my own case I have a comprehensive listing of Australia and Australian Territories in my current price list, and I also have a considerable listing in the January 2000 Postal Bid sale. There may be other dealers with similar lists, although I haven't to date found any in Australia, but there of course auction houses who do specialise in stationery.

I recall some brief correspondence with the Postal Stationery Society newsletter regarding the development of a postal stationery listing of the Australian Colonies and States to 1912 in loose leaf format. I remember that I had volunteered to assist in the Western Australian section but was told that this was being undertaken by somebody else. To date there is no information about what is happening. I think a major contribution can be made in this area, particularly as we are approaching the centenary of federation.

Also a simplified listing may find favour with the editor of the Australasian Stamp Catalogue and I know that Ernest Weiner was looking for a listing of postal stationery to go into the Comprehensive Colour Catalogue of Australian Stamps. The inclusion of these types of catalogues will do more to stimulate collecting of stationery than anything else I can think of.

Robin Linke

**1910 QUEENSLAND POSTAL VIEW CARDS**

Bernie Beston

In the August Edition, John Sinfield was able to update my old list of these elusive cards and to make some hypotheses. In the November issue he was able, with help from Malcolm Lacey, to add another to the list.

I am now able to add another three cards to the list making a new total of 33 views. Regrettably this demolishes the argument of John that there were probably 32 views printed on the one plate. It is now more probable that the cards were printed in groups of 17 or 18 and that a total of 34 or 36 different views exist. This does not include the possible existence of any proofs or essays made before a full printing. We do know that the 1898 chocolate cards were printed in groups of 18 with one of the views being printed twice (Parliament House Card, Exhibit of Ron Butler at Australia 99).

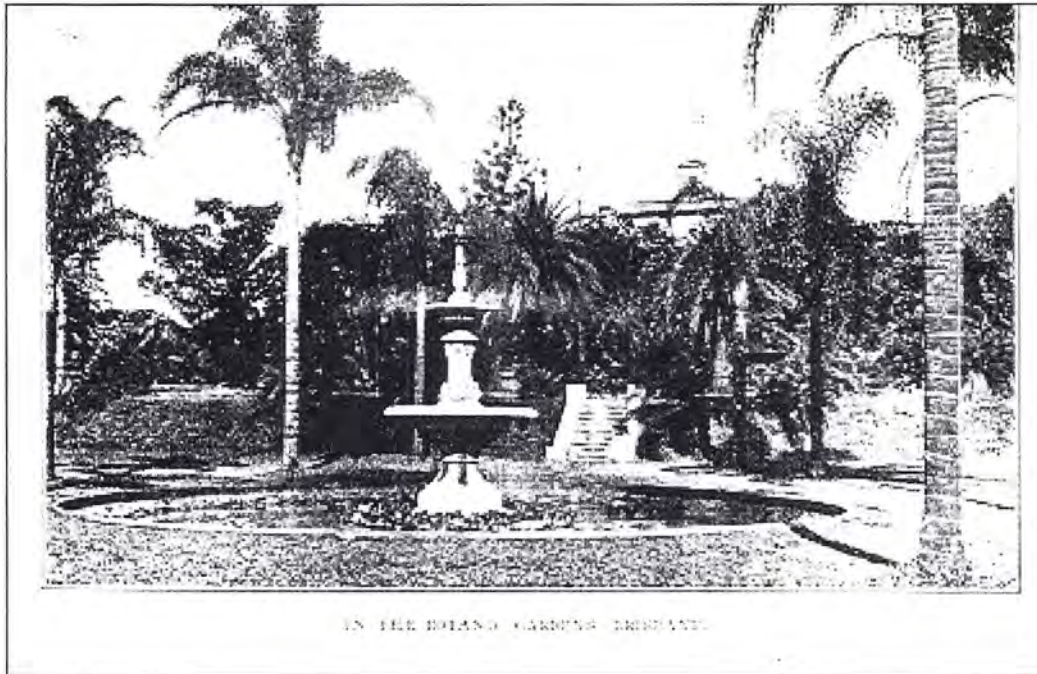


*Figure 1 Barron Falls -Half Flood. Total height, 800ft*

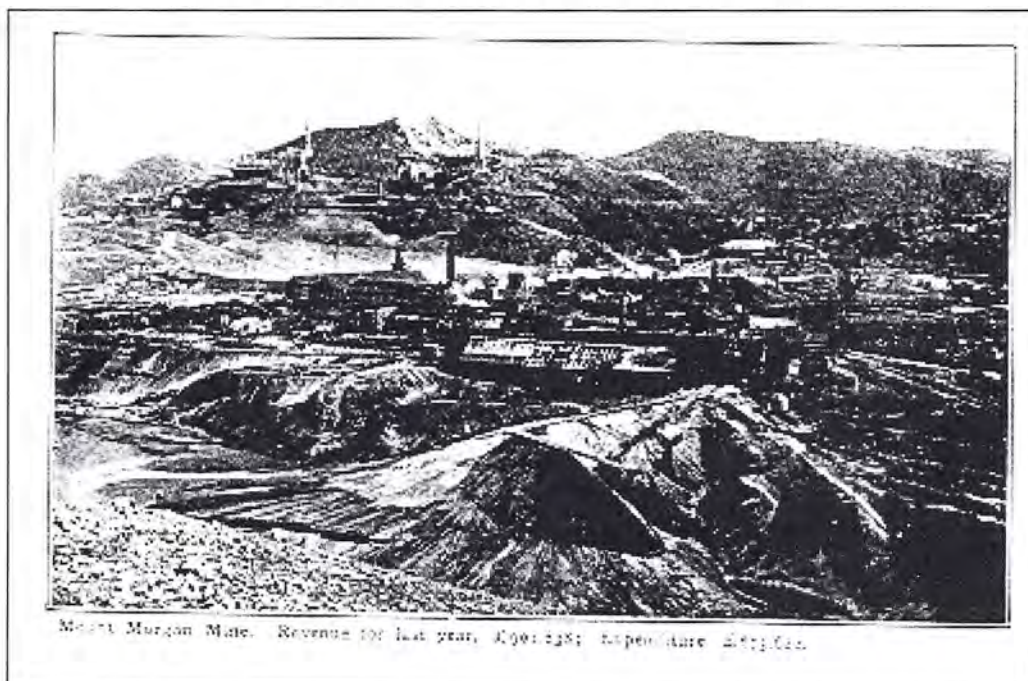
The three ' new ' views are:

31. IN THE BOTANIC GARDENS, BRISBANE.
32. Mount Morgan, Revenue for the last year £901,838; Expenditure £673,622.
33. Barron Falls -Half Flood. Total height, 800ft.

Any more discoveries please?



*Figure 2 IN THE BOTANIC GARDENS, BRISBANE.*



*Figure 3 Mount Morgan, Revenue for the last year £901,838; Expenditure £673,622.*

An interesting addition to this story is the postcards printed for use by the Department of Public Instruction, with a black and white view on the reverse. These were generally not postal stationery but had a square box printed for the stamp on the upper right, with the word STAMP printed in the box (Figures 4-8). All the printing, on both sides of the card, is in black. The number of views is not known, but I have recorded the following views:

1. A METROPOLITAN SCHOOL.
2. A COUNTRY SCHOOL GARDEN.

Postal Stationery Collector

3. A COUNTRY SCHOOL SWIMMING POOL.
4. A COUNTRY SCHOOL.
5. A SUBURBAN SCHOOL.
6. WELCOMING THE ITINERANT TEACHER.

One card is known with the stamp box overprinted with the 1d vermilion stamp, identical to the 1910 cards. This was the same treatment given to the American Fleet Cards of 1908. This card has the view "A Country School Garden" and is dated 29 September 1913 (Figure 9).

Similar Post Cards (but not Postal Cards, as yet anyway) exist for the General Traffic Manager's Office, Queensland Railways; and Office of the Comptroller of Stores, Queensland Railways (Figures 10 and 11).

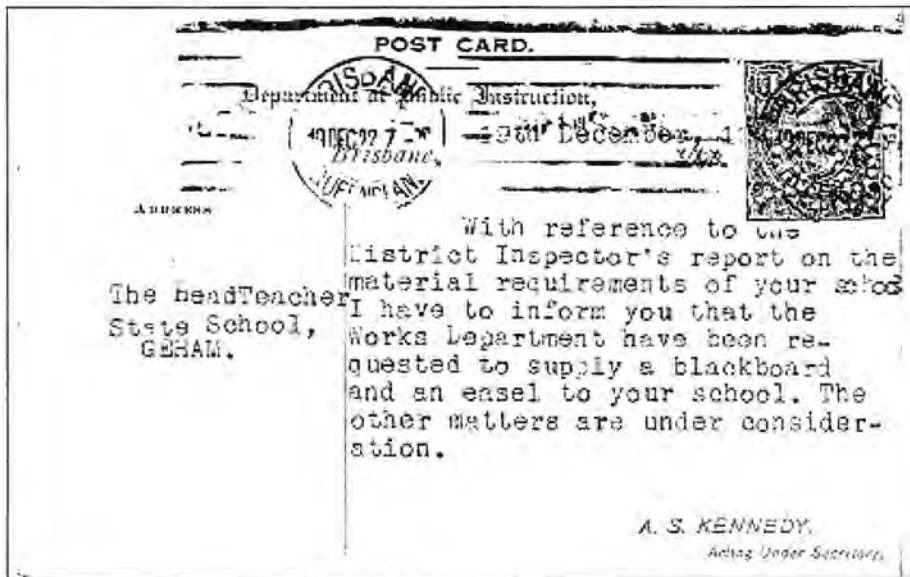


Figure 4

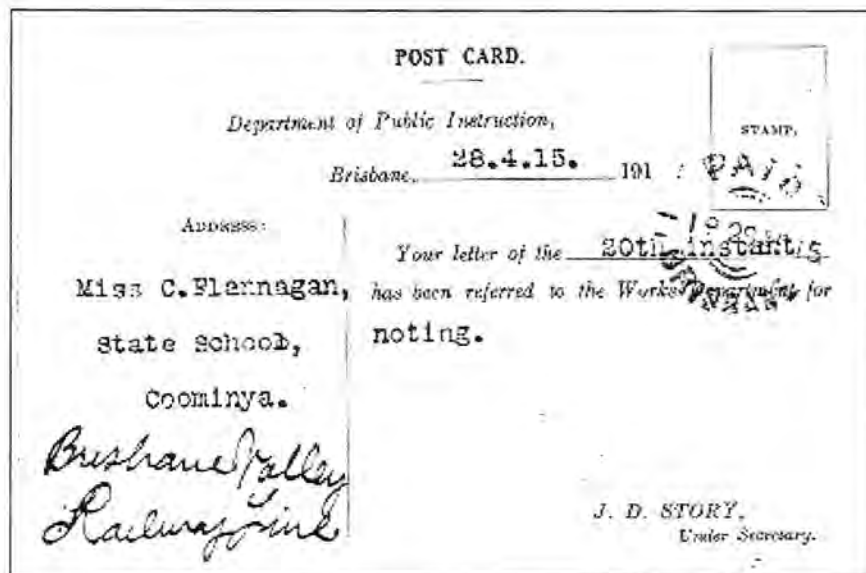


Figure 5



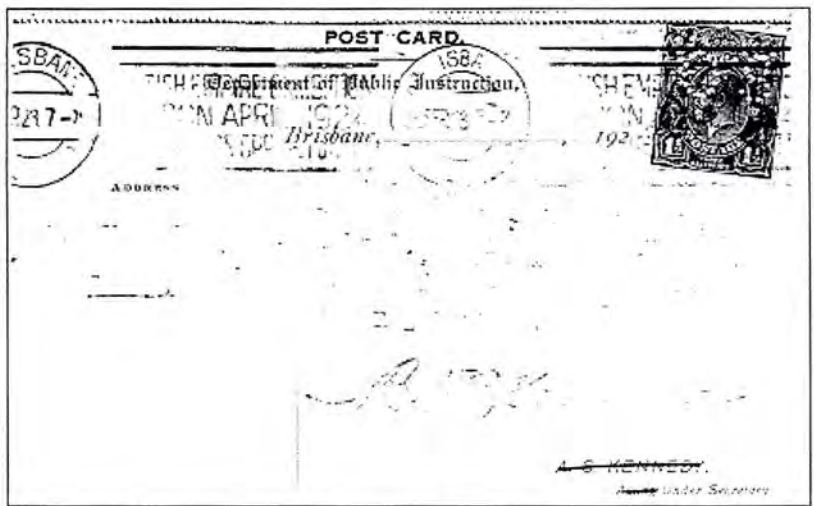


Figure 6



Figure 7

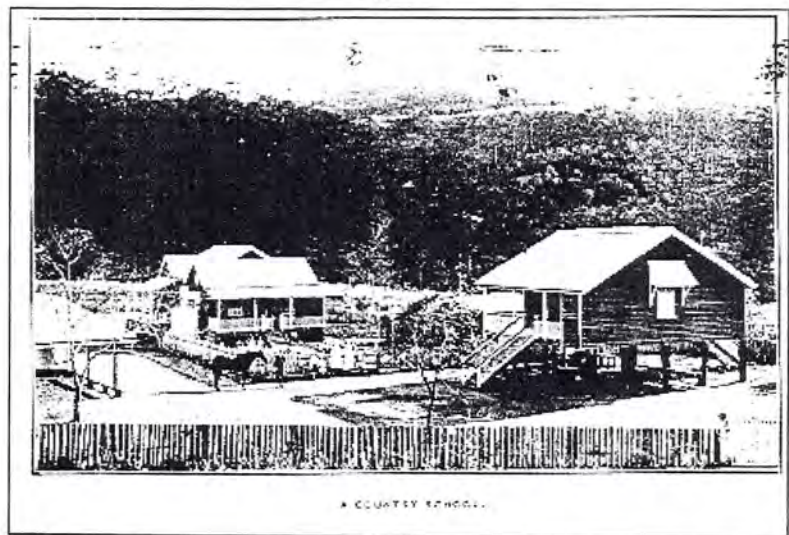
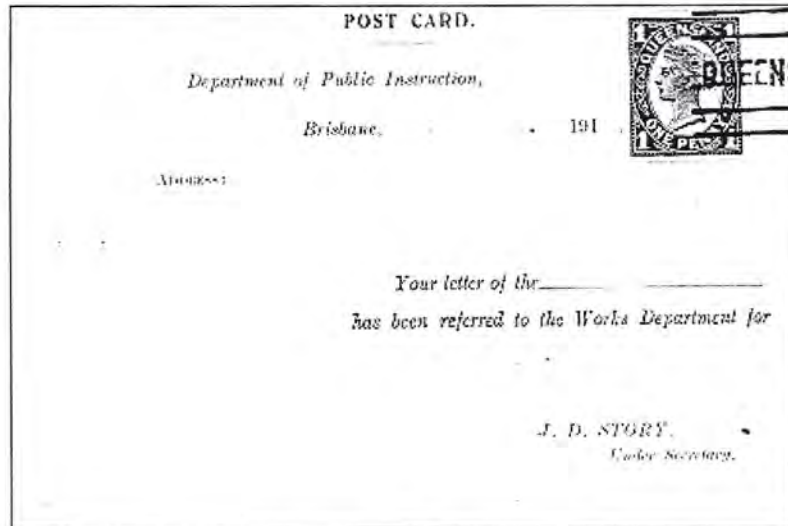
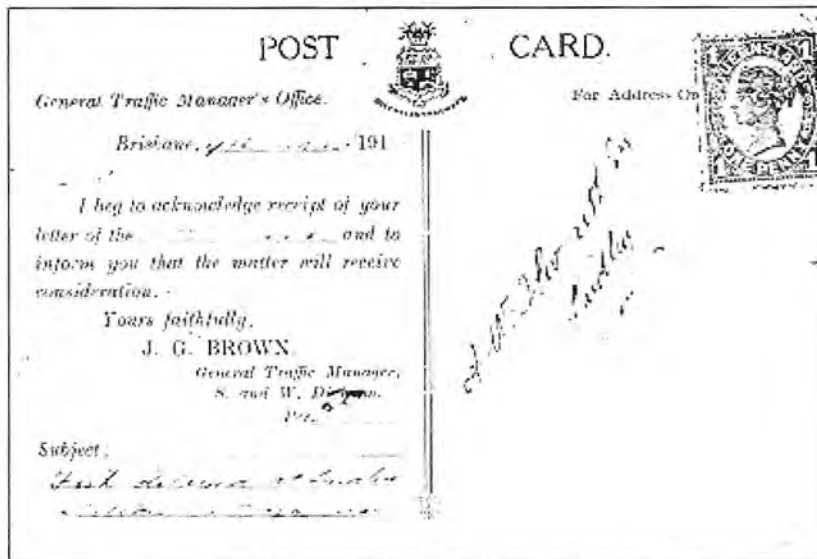


Figure 8

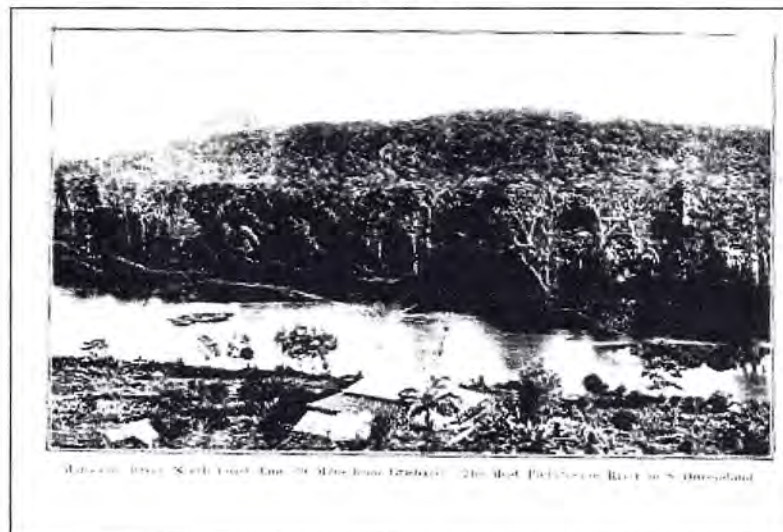
*Postal Stationery Collector*



*Figure 9*



*Figure 10*



*Figure 11*

May 2000

## AUSTRALIAN POSTCARDS - FROM COLONIES TO COMMONWEALTH

John Sinfield

### Federation (1901-1911)

The original British settlements in Australia had developed into six separate colonies which had few contacts with each other since their only means of early communication was by sailing ship. With the development of road, rail and telegraph links, work began in 1891 to federate the six colonies into one single Commonwealth. Queen Victoria's Governor General, the Earl of Hopetoun arrived in Melbourne in December 1900 and appointed Edmund Barton as Prime Minister. A new federated cabinet was sworn in 1 January 1901 and under Section 69 of the Constitution their duty became to take over certain colonial departments.

One such department was Posts and Telegraphs, which was federated on 1 March 1901 with headquarters in Melbourne and responsibility to the Treasury Department. Senator James Drake of Queensland had been appointed Postmaster General on 5 February and the following 28th all six colonial Postmasters-General resigned. A permanent Post Office staff of six was appointed with Robert Scott as Secretary and on 16 November the initial Commonwealth Post and Telegraphs Act was passed to come into effect on 30 June 1902.

The obvious result should have been the immediate issue of Commonwealth stamps and stationery, but like the previous German Empire and the concurrent Union of South Africa this was delayed many years. There was no single cause for postponement but rather a series of interconnected practical or political problems.

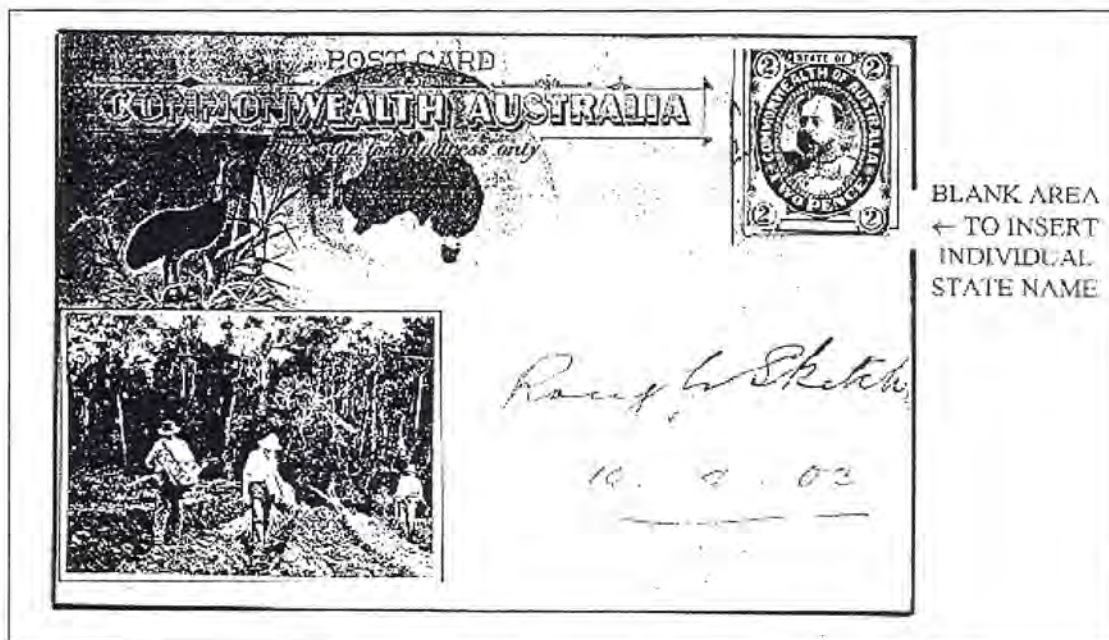


Figure 1 Vaughan's 1903 Lithographed essay of Commonwealth Scenic card.

One major obstacle was the "bookkeeping" clauses of the Constitution whereby the Commonwealth collected postal revenue but passed Post Office profits to the originating State. For accounting purposes separate State stamps and stationery needed to be retained. It was not until 13 October 1910 that this clause was rescinded. Drake however believed he could overcome the problem and in February 1901 set about to issue a uniform stamp. He was thwarted by Tasmania who claimed (and it turned out falsely) that incoming Tattersall's mail would rob that State of rightful income and the

Tattersalls case long remained in the public mind.

Some State stationery print runs were for as few as just 500 units and were prohibitively expensive. Drake thus turned his attention to postcards where the existing uneconomical system required 192 plate impressions (ie 32-on for each of six States). In August 1903 he planned a series of 12 pictorial postcards for each State and had the Queensland Government Printer, Mr G A Vaughan, proof a lithographed illustrated postcard headed "Commonwealth Australia" to which a King Edward VII stamp was added with a blank tablet to insert each specific State name. The scheme did not proceed. It may well have progressed further except shortly thereafter Drake's party was voted from office and the new Postmaster General entirely shelved the notion. The reasons for deferral of action were complex: a succession of government changes created nine different Postmasters General to 1910; few politicians showed interest in stamps - and none at all in stationery; postal services were run down and Treasury failed to supply sufficient funds for effective operations; there was great State and Union rivalry as to where and by whom stamps and stationery would be printed since no one office had sufficient equipment although the New South Wales Government Printing Office was the best equipped; and the public were undecided as to whether Commonwealth stamps should feature the British (and Australian) monarch or some other more localised symbol. The bookkeeping clauses continued to be followed until their eventual withdrawal in 1910.

The Federal Government insisted that all stamps now be printed in Australia so that in 1902 both Tasmania and Western Australia transferred their stamp printing to the Victorian Government Printer in East Melbourne and it was finally decided that this was the preferred location for stamp printing. This was a Treasury decision and they had custody of stamp plates and dies and were conveniently located nearby. J. B. Cooke, who was in effect the only specialised stamp printer employed by the Post Office, had Treasury support and was offered a promotion (without salary increase) to the position of Commonwealth Stamp Printer. This was subject to relocating to Melbourne which occurred on 9th March 1909 accompanied by two of his Adelaide staff, one printing press and two perforating machines. Meanwhile the other States continued full responsibility for their own issues and a variety of postcard changes occurred, not the least of which was dated from 1 June 1905 when Britain entered a further card concession rate with Australia for the exchange of cards at the 1d postal rate instead of the 1½d UPU rate. All States were affected in some way. Tasmania revalued their 1½d reply cards to 1d other States appropriately modified their card headings, Western Australia initially by provisional overstriking "*also available for United Kingdom without extra postage*".

Western Australia experienced some minor difficulties with their stamp and stationery printings being carried out in Melbourne. New values were needed and since no appropriate black swan impressions were available Mr Brain, the Victorian government printer, had altered Victorian designs by substituting "WEST AUSTRALIA". For postal stationery 1½d, 2d and 3d were involved (and adhesive stamp values exceeding 2/-). This abbreviated name format prompted the WA Premier's May 1903 complaint that the name of his State was incorrect! Brain mutely blamed space limitations and offered modification to ""STN" but at a cost of £7 for each value. Victoria's inappropriate compromise was rejected by Perth and stamps and stationery continued with an incorrect spelling of State name. The Victorian printer was also hesitant to supply ½d town rate postcards. WA was the only State where this discount operated and, since Melbourne could not be convinced to print the cards, the Perth authorities quietly withdrew the card in February 1903 although the ½d town card discount still remained a gazetted rate in WA until 1 May 1911 when the Uniform Commonwealth 1d Postage legislation was enacted.

Although Queen Victoria had died in 1901 just three States proceeded with King Edward issues (Victoria: £1 & £2 stamps; Queensland: 3d registered envelopes; Tasmania: 1d postcards and ½d & 1d wrappers) but only Tasmania with a change of monarch on 1904/06 1d postcards, albeit these were printed in Melbourne. State stamp impressions continued but commencing from 1906 all postcard issues for New South Wales and Queensland were headed "Commonwealth of Australia". Victoria,

Tasmania and Western Australia (all Melbourne printed cards) did not adopt such a heading.

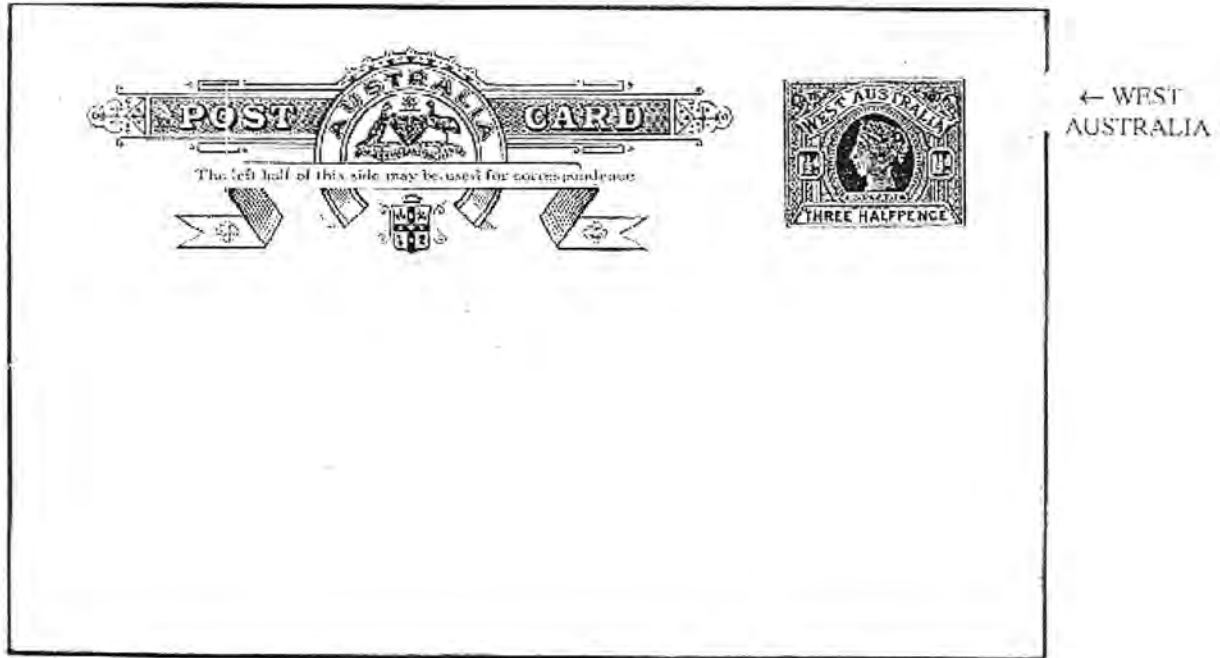


Figure 2 Western Australia 1912 Melbourne Print 1½d Foreign Rate Card

Three colourful postcard series of this period are worthy of specific mention and each bear the "Commonwealth of Australia" reference on front. The first came about from a government invitation (much to British Colonial Office vexation) for a visit in August/September 1908 of the United States naval fleet of sixteen warships and supporting vessels which called in at Sydney, Melbourne and Albany. To commemorate this historic event the Australian Post Office arranged the printing of 75 000 colourful cards by the Government Printer Sydney. The stamp impressions (except for NSW SA and Qld) were added by the Government Printer Melbourne. All states issued an omnibus 1d card and New South Wales and Victoria also made available a 1½d card which was the rate at which American sailors could mail the card home. Only the Melbourne printed Victorian design differed by featuring the Melbourne GPO building. Issued numbers were extremely small - WA = 10,000; Qld = 6,000; SA = 4,500; Tas = 2,000 - and these are among the scarcer of these States' postcards. New South Wales and Victoria between them received the balance of printing and their cards are more plentiful with a few stampless presentation copies existing for both States.

The second card was the 1909 South Australian 1d scenic series consisting of 22 views printed in Adelaide and 18 in Melbourne giving an overall total of 28 different scenes. Both printings were by Cooke, either prior to, or following, his Adelaide/Melbourne relocation. The two printings are most easily identified in that the October 1909 Melbourne reissue bears no fullstop after "Australia" although there are other slight differences as well. Plates were 16-on. Specific scenes added from the 1908 Adelaide Livestock Show had a small print run and are quite scarce. Cards are printed in only one colour but an extremely wide range was used since Cooke wished to increase public appeal and is quoted with- the statement that different card colours would have no philatelic repercussions as "*philatelists do not save postal stationery*"!

It was deemed appropriate to honour the August/September 1908 visit to Australia of the USA naval fleet. A colourful card was provided by the Government Printer, Sydney to which current 1d or 1½d stamps of each State were separately printed (mainly in Melbourne). Only the Victorian cards were of different design, and these were wholly printed and stamped by the Victorian Government Printer.

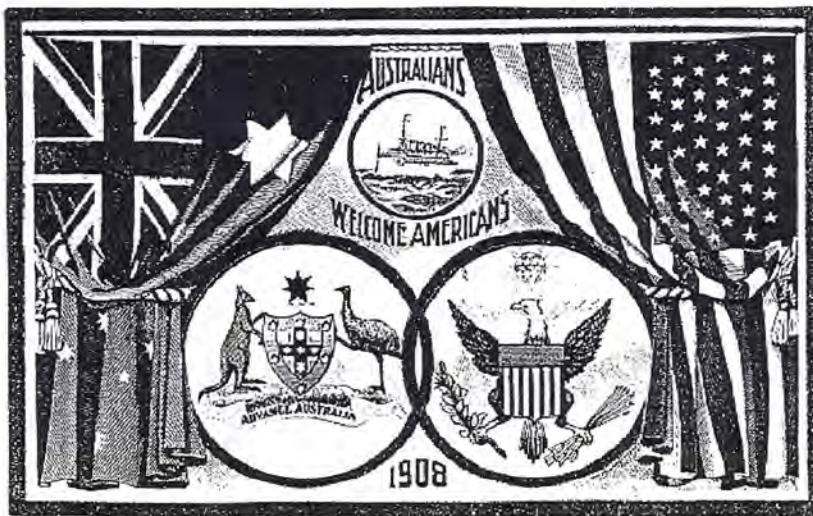


Queensland fleet card commercially mailed in Brisbane 7 Sept. 1908



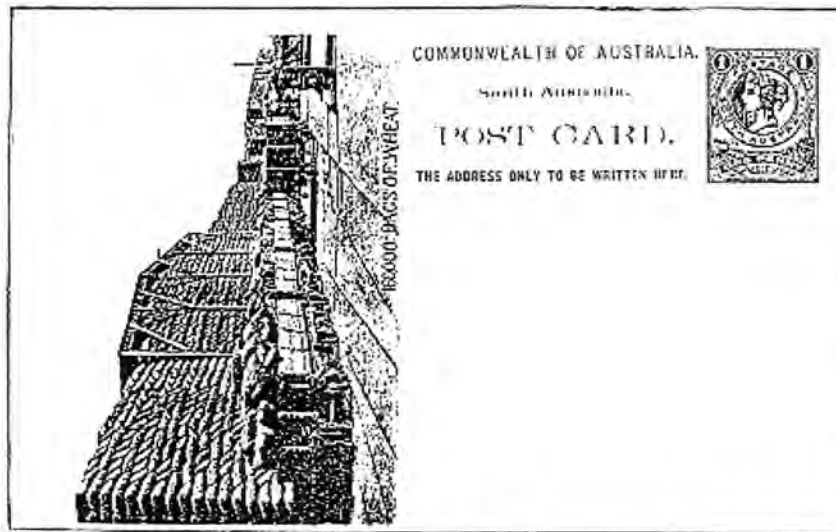
The Address only to be written on this side.

Victorian 1½d card: Despite the fleet also calling at Albany, WA, only Victoria and New South Wales provided 1½d cards, this being rate for Americans to mail cards back home



The multicoloured reverse depicted American and Australian flags and arms, around the inscription "Australians Welcome Americans 1908". Victorian design (flags on reverse) was by B.F. Magnus.

Figure 3 1908 US Fleet Omnibus Commemorative Postcards



Printings of the  
28 Different Views

	Adelaide Printing 500,000 Issued	Melbourne Printing 248,800 Issued
Adelaide Railway Station		X
Anglican Cathedral (St Peters)	X	X
Bridge over Hindmarsh River		X
Carting Far North (Camels)		X
Carting Far North (Bullocks)		X
Champion Shorthorn	X	
Circulating Library Adelaide	X	X
Clarendon (Adelaide Hills)	X	X
(Commonwealth) Savings Bank	X	X
Dairy Farm, near Adelaide	X	
Dam Sinking	X	
Fat Bullocks	X	
Government Butter Factory		X
Hill River. Prize Merino Ram	X	
Hindley Street	X	X
Kookaburra	X	X
160,000 Bags of Wheat	X	
On the Murray (P.S. "Ruby")	X	X
Palm House Botanic Gardens	X	X
Phosphate Quarry (St. Kitts)	X	
Prince Alfred College	X	X
Poultry Farm (Roseworthy)	X	
Rundle Street	X	X
School of Mines, Adelaide		X
Stack of Wheat	X	
View of Southern Railway	X	X
World's Record, 1,992lbs Dressed	X	
Wool Carting	X	X
	22	18

Two scarce Adelaide printings. Above, 160,000 *Bags of Wheat* (with stop following Australia.), and below, the scarcest of all the 28 scenes, *Champion Shorthorn* which is the exception to the stop rule - only in this one instance has the Adelaide printing no full stop following Australia.

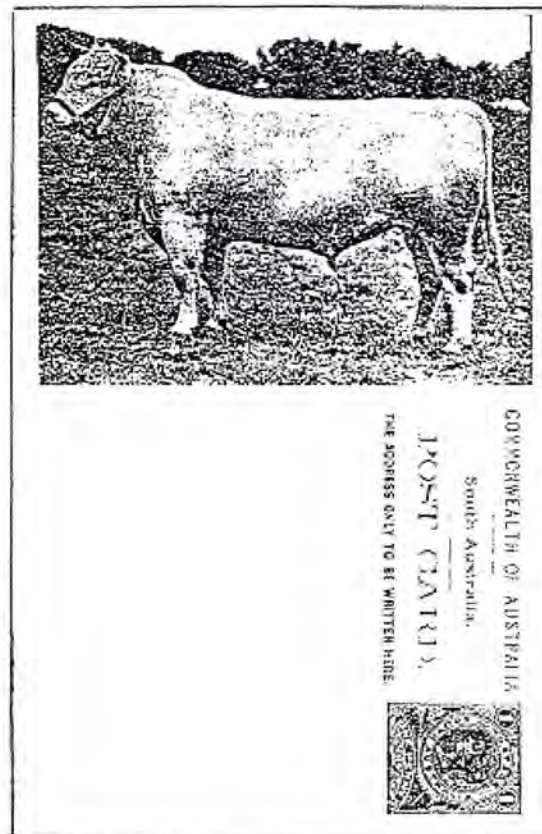


Figure 4 South Australia 1909 1d scenic viewcard series

## *Postal Stationery Collector*

Another 1d scenic card issue, and a scarce one not well known to collectors, occurred in Queensland in October 1910. Many views on their original 1898 scenic issues had become outdated and Brisbane Central Post Office administration was keen to modernise. The adopted style was similar to the private pictorial cards with the entire reverse featuring a black and white photograph. The card front was printed in red with a central dividing line to separate address and correspondence. The stamp was of the 1897 Bradbury Wilkinson Queen Victoria design. In an unusual precedence for cards an imprint "A.J. Cumming Govt. Printer" was added, no doubt to distinguish this government issue from the host of private cards then in circulation.

The print run appears to be quite small and by early 1911 the reverse pictures and front dividing line were both removed because of public complaint of lack of correspondence area. Higgins and Gage list nine different views and in 1979 Phil Collas advised of 12. In the ensuing 20 years Bernie Beston has further studied this issue and now records 33 scenes.

### **EXAMPLE OF LATE USAGE**

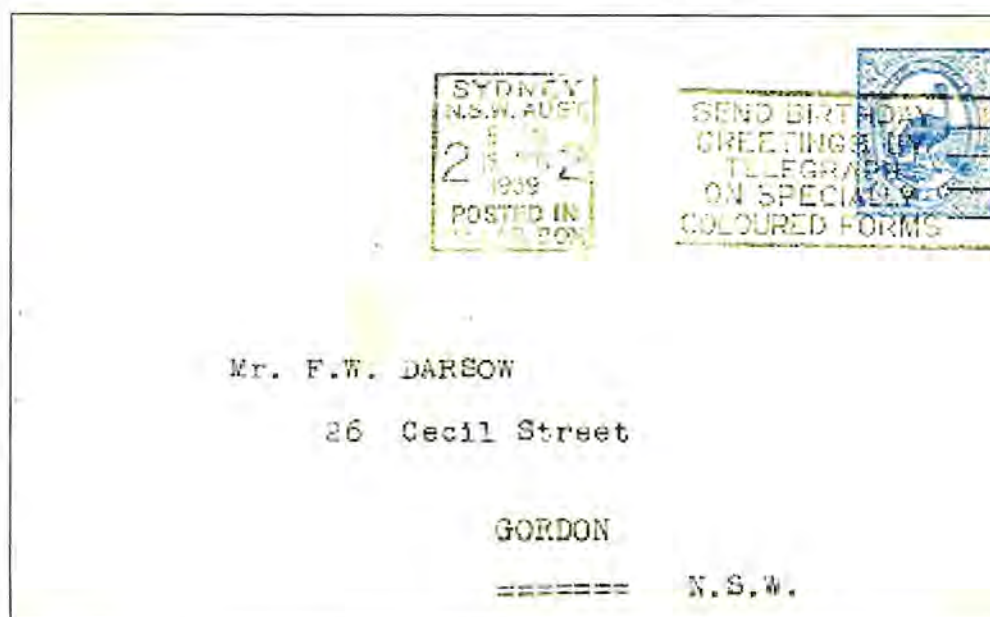
Judy Kennett

The New South Wales postal stationery envelope illustrated below was found in a dealer's book at Canberra Stampshow 2000.

It took my eye for two reasons. Firstly I have a collector correspondent in the UK who is interested in the 'posted in pillar box' slogan cancels that were used in main post offices in Brisbane Sydney and Perth during the 1930s and 1940s.

Secondly I have a collector friend who has a secondary interest in telegraph stamps, stationery (particularly stationery either with added adhesives or with embossed stamps) and telegraphic cancellations.

I was so busy looking at the slogan cancel that some time had passed before I realised that this was a piece of Australian States postal stationery, and in remarkably good condition for its age. The paper is scarcely toned, but there are staple holes and a small tear on the left-hand side of the envelope.





May 2000

## FORMULAR POST CARDS OF AUSTRALIA POST

Martin Walker and Craig Chappell

The following listing is divided into the following sections –

1. Australian Formula 1 Grand Prix (previously published)
2. Postal Museums and Philatelic Exhibitions (previously published)
3. Bonus Cards
4. Other Sporting Events
5. Other Events
6. Miscellaneous Souvenir and Promotional Cards
7. Avant Card Productions
8. Maximum Cards

Section 1 was published in the August 1999 edition of *The Postal Stationery Collector* and section 2 in the November 1999 edition.

### 3. Bonus Cards

Several Australia Post Products had post cards included, or offered, as bonuses to the original product. Sometimes the cards have been included as part of the total package or were sent to the purchaser of the products on redemption of a special voucher included with the product. The first issue of bonus cards were offered to purchasers of the “America’s Cup Giftpack”. These were actually a series of maximum cards, which will be discussed in section 8 of this article.

The next set of bonus cards appeared with the issue of the heritage book published to coincide with one of the sets of stamps commemorating the fiftieth anniversary of Australia’s involvement in the Second World War. The book published to accompany “The Home Front” issue contained a voucher to obtain by mail a set of four postcards. If the book was purchased by mail order the cards were already included. The four cards featured scenes of civilian life during the war years. The stamps; book and cards were released on March 14, 1991.



*Pitching in*



*Home again*



*Making do*



*Saturday night*

The next series of bonus cards were included with an address book set released on October 10, 1991. This gift set, costing \$19.95, featured products highlighting the artwork of Priscilla Cutter, the designer of the “Thinking of You” stamp issue. Ten post cards showing Australian Wildflowers were included with the Address Book. It appears that very few of these cards are presently held in the hands of philatelists – indeed the authors are still endeavoring to obtain these cards for their collections.

*Postal Stationery Collector*



*Native Rhododendron    Golden Wattle    Royal Bluebell    Native Rosella    Sturt's Desert Rose*



*Large Blind Grass    Native Daphne    Australian Bluebell    NSW Waratah    Native Rose*

The next, and final, set of bonus cards appeared with the "Australians Under Fire" heritage book released on February 19, 1992. This accompanied the set of stamps issued on that date. Five cards depicting the same Brian Clinton artwork used for the stamp designs were released with the book on the same basis as "The Home Front" issue.



*Bombing of Darwin    Battle of Milne Bay    Battle of Kokoda Trail*



*Battle of the Coral Sea    Battle of El Alamein*

**4. Other Sporting Events**

Australia Post's sponsorship programs have seen them issue promotional cards to publicize a variety of sporting events and teams. The cards promoting the Formula 1 Grand Prix in Adelaide were featured in part 1 of this article. This part covers the remaining sporting cards.

In 1986 the America's Cup of yachting was defended in Western Australia. Australia Post issued many products associated with the event and these included a large gift pack of items. These items included a calendar, which in turn included a number of tear-out post cards. Six cards were featured. The "America's Cup Giftpack" went on sale on September 26, 1986.



*The Calendar*



*Beating to Windward,  
port tack*



*Bowman aboard Australia II,  
calling the start*



*Cockpit area,  
with twin wheels*



*Australia II stern,  
crew to leeward*



*Australia II  
- the winged keel*



*Beating to windward,  
starboard tack*

A set of four *prepaid* cards were issued to mark the Victorian Spring Racing Carnival of 1993. These featured a series of Charles Billich paintings. The same series of designs were also used for a similar set of formular cards with an "Affix Stamp Here" box on the address side instead of the Postage Prepaid Indicator. These cards were not publicized and did not sell very well as the combined cost of the card and a 45¢ stamp exceeded that of the same card with prepaid postage. The price differential was even greater for people to mail the cards to overseas addresses. The exact date of issue is unclear but was around October/November 1993. There is some suggestion that the cards were issued on different dates to coincide with the individual horse races associated with each card. The cards were reported to have cost 60¢ each and were sold at selected post offices in the Melbourne metropolitan area. Special pictorial postmarks commemorating various races of the carnival were available.



*Vanity Fair*



*Melbourne*



*Victoria*



*This is Carnival*

## Postal Stationery Collector

The Australia Team competing at the 1996 Olympic Games featured a number of athletes employed by Australia Post. The cards produced by Australia Post for these games have already been the subject of an article appearing in the *Postal Stationery Collector*. One of these cards was not prepaid and featured the Australian mascot "Willy" on the view side and a message of thanks and greeting on the address side. These cards were supplied to members of the Australian Team to send messages from Atlanta and to respond to fan mail. 30,000 cards were printed by S.R. Frankland P/L in May 1995. They were distributed to team members to use during the Atlanta Games in July 1996.



South Australia's only team in the National Rugby League Competition was the Adelaide Rams. Australia Post was one of the team's sponsors. Australia Post also sponsored one of the home games and in 1997 produced a post card to mark the event. The game, Adelaide Rams versus Hunter Mariners, was played at the Adelaide Oval on August 8, 1997. The Corporate Communications department of Australia Post (SA/NT) produced 1,000 cards and these were given away to rugby league fans at the game. A special postmark was in use at Australia Post's Sales Caravan at the game. As many of these cards were thrown away on the night their survival rate would be very low. The number of rugby fans astute enough to buy a stamp and get the cards postmarked on the night would also be very low. This card may prove to be the key item in any collection of modern Australia Post cards.



Cards were supplied to members of Australia's Commonwealth Games team competing in Kuala Lumpur in 1998. Like the Atlanta issue, these cards depicted the team logo on the view side and a message of thanks on the address side. The number of cards produced is not known at this stage. The Games were held during September 1998.



The VicHealth Herald Sun Tour is an annual cycling race through Victoria. The 1999 event was the eleventh tour and was held from October 14 to 24. One of the teams was sponsored by Australia Post and a card featuring team member John Lieswyn was issued to promote the event. The card depicts Lieswyn, victorious in one of the stages of the 1998 race. The address side lists the members of Team Post '99.

May 2000



Another cycling race was commemorated by a series of six post cards placed on sale on December 5, 1999. These cards depicted each of the six stages of the Tour Down Under held in South Australia during January 18-23, 2000. The views were from images of the 1999 event supplied by the race organizers. 10,000 of each of the six designs were printed and special postmarks were available at the towns from which each stage of the race commenced. At the time of writing (March 2000) only 4,000 of the 60,000 cards have been sold so it may be worth grabbing a few before the remainders are destroyed. The cards are still available at their original price of \$1.00 each or \$6.00 for the set of six. Sets of six are also available with the special postmarks at \$8.70 (with 45¢ stamps) or \$12.00 (with \$1 stamps). Orders may be placed with Philatelic Sales, G.P.O. Box 4000, Adelaide, SA, 5001.

Collectors of errors may be interested to know that the card for stage 5 has the blue address lines omitted from the design and the original postmark for stage 2 (North Adelaide) had the incorrect post code – 5000 instead of 5006. The postmark error will be scarce as it was withdrawn and replaced by a corrected design. The postmarked sets available from Australia Post contain the corrected version.



Stage 1



Stage 2



Stage 3



Stage 4



Stage 5



Stage 6



Stage 2 card with postmark error and Stage 5 card with address lines omitted.

**CANADA NEW ISSUES**

Ian McMahon

Canada has issued a number of interesting stationery items at the end of 1999 and early 2000.

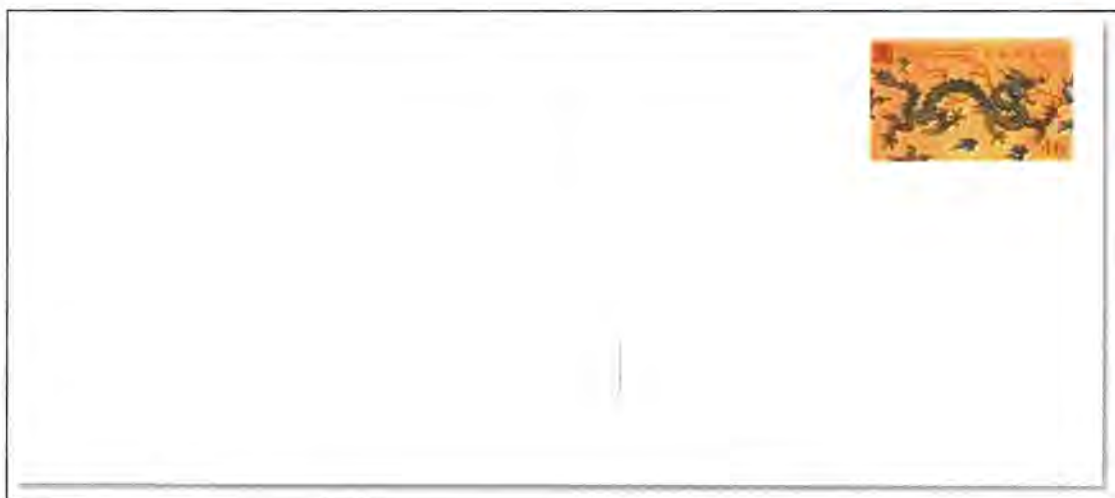
**IMAX Theatre**

A 46c prestamped envelope commemorating IMAX theatre (a Canadian invention) was issued in late 1999. The envelope was sold with a special greeting card for \$4.50. IMAX first made its appearance at Montreal's Expo '67 and has since brought the total experience of film to millions of viewers. The stamp design was originally used for a stamp in Canada Post's Millennium Collection.



**Year of the Dragon PSE**

Also in February, a private order window envelope was issued for the Chinese New Year, the Year of the Dragon. The envelope had a stamp based on the adhesive stamp of the same issue. Only 4 000 were made available through the Philatelic Bureau and they sold out immediately.



**Valentine's Day Lettersheet**

In January 2000, a 46c Valentine's Day lettersheet was issued. The lettersheet was sold at \$1.99.



**Pre-paid Photo-Mailer**

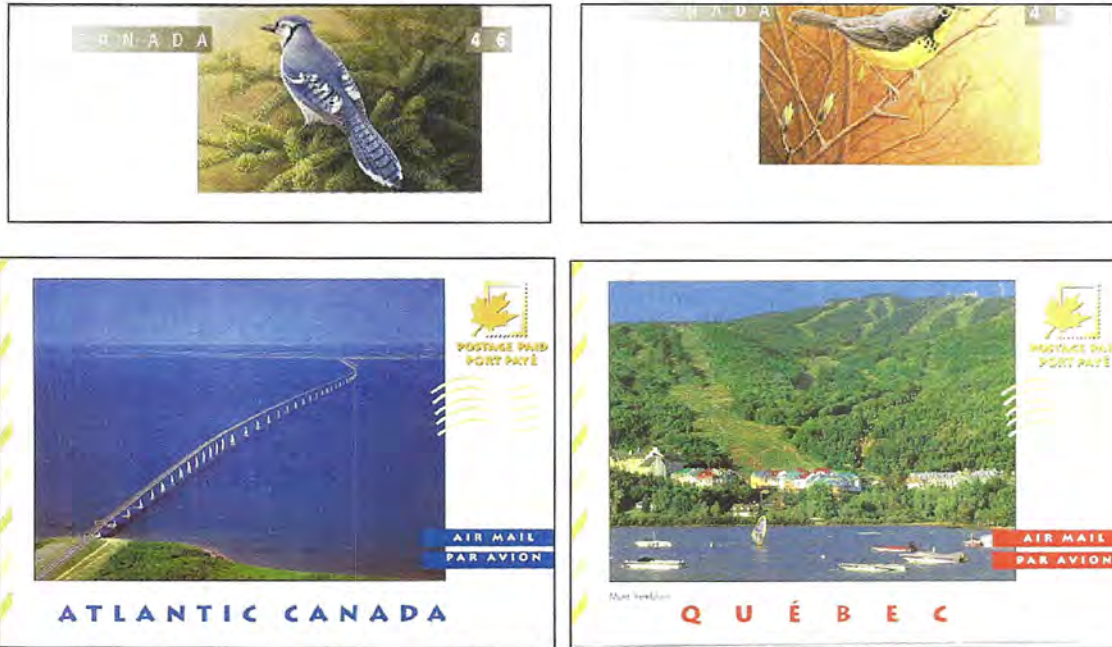
A Canada Post pre-paid photo-mailer was issued sometime in 1999.

**Bird Pre-Stamped Envelopes**

The fifth set in Canada Post's Birds of Canada adhesive stamp series were issued 1 March 2000. Accompanying the adhesive stamps were two stamped envelopes, a 46c #8 envelope (selling for 49c) depicting the Canada warbler and a 46c #10 envelope (selling for 50c) depicting the blue jay.



*Postal Stationery Collector*



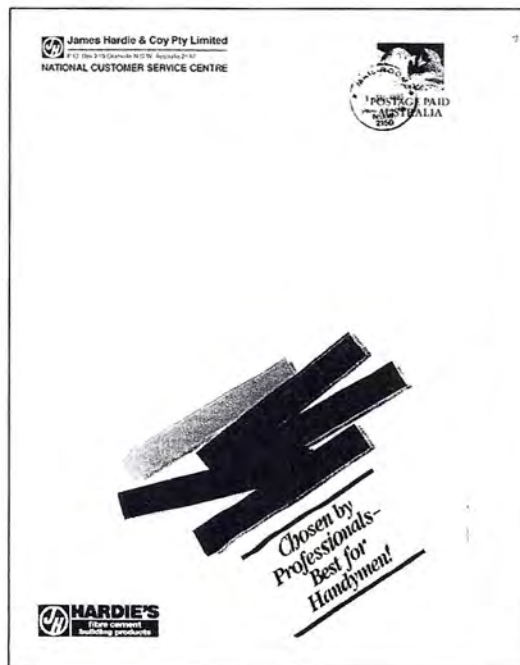
**Pictorial Postcards**

About mid-1999, at least 33 new pictorial postcards produced including views of Toronto, Newfoundland, Atlantic Canada and Quebec were issued. These were in the same format as the cards described in the August 1999 issue of *PSC*.

***PTPO NATIONAL PARK ENVELOPE***

Colin Hingston

In a recent issue of *PSC*, Ian McMahon recorded the existence of a new PTPO envelope for National Photos. This reminded me of an earlier PTPO envelope I had from the National Park issue. This envelope is depicted below and was issued for James Hardie and Company.





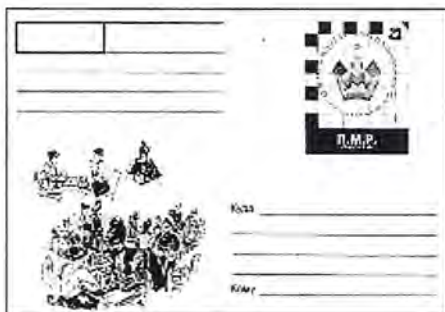
### CINDERELLA POSTAL STATIONERY

Ian McMahon

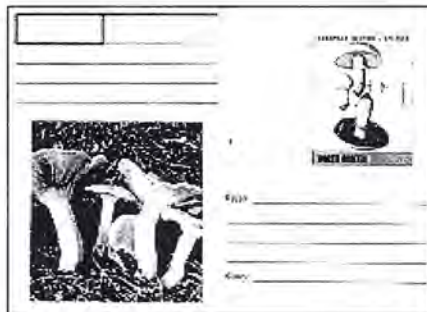
The collecting of cinderella adhesive stamps, the vast array of adhesive labels including bogus stamps, charity labels and publicity labels, has a small but dedicated following. I know of no one, however, who seriously collects cinderella postal stationery.

For such a collector a whole new field has just opened up. Most collectors will know of the many adhesive issues of Russian republics. The vast majority of these issues are bogus and produced entirely for collectors. The republics they represent are an integral part of the Russian Federation and use Russian stamps. How many collectors will be aware that these 'republics' have also issued postal stationery. Some of the bogus 'postal cards' issued include:

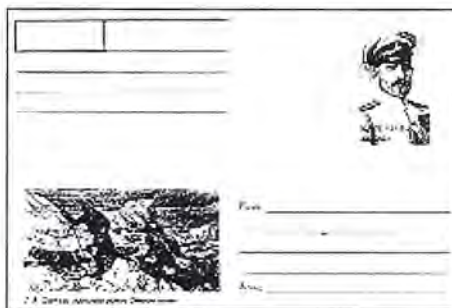
**RUSSIA:** Kalmykia, Chess 2000 rub; Karelia Explorers (4 cards) 2.50; North Ossetia Mushrooms (4 cards) 2.00; Sakhalin, Flights to USA (2 cards) North Pole (3 cards) 2.00; Touva, History of Chess (2 cards) 2.00, Charlie Chaplin 2.00; Yakutia Explorers (2 cards) 2.00  
**MOLDOVA:** Pridnestrovie Women Chess Championships (4 cards).



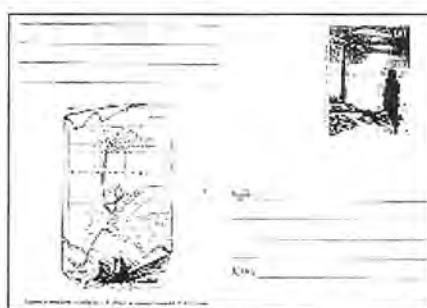
Pridnestrovie



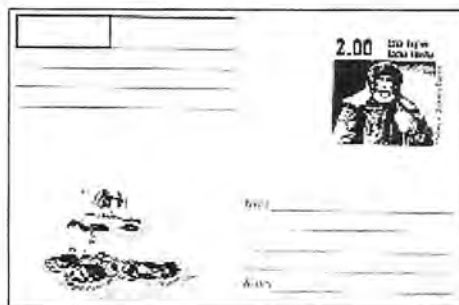
North Ossetia



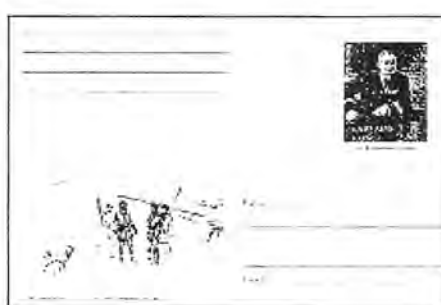
Karelia



Sakhalin



Yakutia



Karelia

**FRANCE: PREPAID ENVELOPE WITH UNDENOMINATED 'STAMPS' SE-TENANT**

Derek Brennan

The postal stationery envelope illustrated in Fig. 1 (size DL) displays some interesting features in the 'stamp' design area at upper right corner.

The stamp area of 41mm x 26.5mm has simulated perforations on all sides and vertically through the centre, so as to imitate two stamps se-tenant. The perforations gauge 6.25. As the colour of the printed area makes it difficult to discern the design particularly when reproduced in black and white print, I give a description.

The background of the stamp area is dull brownish-orange bleeding fully to the edge of the simulated perforations. The whole area is traversed by the word 'INTERNATIONAL' in white following a shallow curve from lower left to upper right, and crossing a central illustration of a globe of the world in orange-brown. The globe is not readily apparent, as there is little contrast with the background, and the globe is cut through by the vertical simulated perforations. The hemisphere is tilted with the north polar area to the left, centred on the Atlantic Ocean flanked by the Americas, Europe and Africa with Antarctica at lower right.

The two simulated stamps are undenominated and have different texts in blue. The left-hand 'stamp' bears the words 'PORT PAYE/FRANCE' (two lines) at upper left reading horizontally, and the right-hand 'stamp' the words 'LA POSTE' at lower right side reading upward.

The envelope also bears at centre-left a printed label 'PRIORITAIRE/PRIORITY' label (white text on blue) set an angle about 20° off-horizontal, reading upwards. As the blue colour is similar to that on the 'stamp' area, the label appears to have been printed as part of the overall design. Space has been left available at upper left corner for the sender's address (in this example printed in blue but of a different hue to the label)

Of the many postal stationery items in the world today (and in earlier years) there seem to be relatively few bearing 'stamp' areas with simulated perforations, let alone with a se-tenant design and undenominated. Perhaps the user needs some immediately visible reassurance that the printed 'patch' does indeed represent a 'postage stamp'.

I have not had the opportunity to identify this envelope but it was current in January and February 2000.



**LISTING OF AUSTRALIAN NON-DENOMINATED POSTAL STATIONERY  
(NEW ISSUES)**

Ian McMahon

**Postcards**

?? Add to Pictorial 2000 Australia Post Boxed  
Postcards (\$3.20) Logo on reverse of card  
Mt Isa (\$3.20) internal (240x353mm)  
internal (240x353mm),  
logo also on front, plain  
inside

21 January 2000 ANZACs  
Maximum cards  
(-) Roy Longmore  
(-) Walter Parker  
(-) Alec Campbell  
(-) 1914-15 Star  
(Set price: \$4.60)

28 February 2000 (?) Arts Festivals  
Maximum cards  
(-) Perth International Arts  
Festival  
(-) Sydney Festival  
(-) Adelaide Festival  
(-) Melbourne Festival  
(-) Brisbane Festival  
(Set price: \$5.75)

Note: Originally intended for issue on 24 February, the release of this issue did not occur until the following week.

23 March 2000 Gardens  
Maximum cards  
(-) Bottlebrush  
(-) False Sarsaparilla  
(-) Canna  
(-) Roses  
(-) Hibiscus  
(Set price: \$5.75)

13 April 2000 Queens Birthday  
Maximum cards (\$1.20)

18 April 2000 50<sup>th</sup> Anniversary of the  
Korean War  
Maximum Card (\$1.20)

**PTPO Envelopes**

?? National Parks: Uluru  
(-) James Hardie and Co

**Registered Envelopes**



**Express Post Envelopes**

March 2000 Barcode moved to the  
right and web address  
added (\$3.00)  
Note: Codes seen: CN, CV

**Parcel Post Satchels**

March 2000 Olympics Issue  
(\$3.50) Katie Starrs  
(\$6.50) Lisa Carruthers



A new Express Post 'Guarantee void' label.

**LITERATURE**

***From our contemporaries***

*Postal Stationery* November-December  
1999

Locally Overprinted Postal Cards Used in  
Venezia Giulia  
Handling of Misdirected Postal Cards  
Postage Stamps with Publicity Labels  
Attached Used on Postal stationery  
Specimen Forms from the George H Reay  
Contract Period  
Plate Varieties of S63  
Differentiating Buff and Manila Papers on  
1863-64 Wrappers

*Die Ganssache* 1-2/1999

Namibia Postal Stationery  
New Products of German Post the  
'Postfach-Benachrichtigungskarte'  
Arabian Postal union  
Stationery of the Soviet Zone of Occupied  
Germany

New Issues

*Die Ganssache* 3-4/1999

Egypt Cassette Envelopes  
Berlin Airmail Postcards  
New German Postcards  
New Issues

*Postal Stationery Notes* February 2000

Early CBNC Elizabethan Postcards  
Canadian Express Co

*Setempe* Nov/Dec 1999 [South African  
Post Office Bulletin]

Early Union and South Africa Essays in  
the Post Office Archives Part III Union  
Postal Stationery, including  
interprovincial issues. By Paul van Zeyl

***Catalogo degli Interi Postali Italiani Con Sovrastampe Private Celebrative e  
Commemorative, Volume 1.***

A 28-page listing of Italian stationery with private commemorative printed cachets, published  
as a special edition of L'Intero Postale.

***Cyprus Postal Stationery 1878-2000*** by I C Ionnides and C J Podger

This is the second edition of Cyprus Postal Stationery which was first published seven years  
ago.

The new edition brings the story up to the present and includes a new chapter on postal  
history. Also included is additional information on the usage of British Postal Stationery on  
the Island during the early period of British occupation, including stationery overprinted  
'CYPRUS'.

Hardbound with many colour plates, 257 pages. Available from Vera Trinder for £45 plus  
postage.

***Contributions to the next issue of the Journal close with the editor on 30 June 2000.***

***PLEASE CONTRIBUTE!***

May 2000

**FROM THE SECRETARY**

Judy Kennett

**Welcome to new member**

We recently welcomed the following new members to the PSSA: Frank Pauer (Vic) whose interests are postcards and maxicards and Linda Lee.

**Resignation**

Bill Lyons (USA)

**Members' email addresses**

I have now recorded email addresses for more than half the members. If you have not yet sent your email address to [jvkennet@pcug.org.au](mailto:jvkennet@pcug.org.au), please do so as soon as possible. We have recently re-designed our application for membership form to include a space for new members to give us their email addresses. This will be the favoured method in future for sending out renewals, reminders and notices of meetings.

**Non-arrival of Postal Stationery Collector**

I have had two messages in recent weeks from members who had not received previous issues of the PSC through the mails. We can only assume that the gremlins in the mails are alive and well. Please contact me by one means or another if your copy doesn't arrive in a reasonable time. Ian and I maintain a stock of spares, but it's better to apply sooner rather than later for a replacement.

**PSSA informal meeting 18 March 2000**

During Canberra Stampshow 2000, thirteen members and visitors gathered for an informal meeting. We gained one new member and application for membership forms were passed to two visitors, together with sample issues of the journal.

A short financial statement prepared by the Treasurer was passed around. Judy Kennett then passed around examples from a collection of Romanian newspaper wrappers that she had acquired last year (this material was written up in Issue No 20 of the *Postal Stationery Collector*) followed by a collection of colourful Romanian money orders covering the period 1890-1926. Ian McMahon then showed selected postal cards from his display of Canadian postal stationery, Queen Victoria to King George V.



*Postal Stationery Collector*

**TREASURER'S REPORT**

**PROFIT & LOSS STATEMENT**

01/01/99 Through 31/12/99 (in \$s)

<b>Category Description</b>	
1998 Membership	135.00
1999 Membership	1,515.00
2000 Membership	770.00
Bank Interest	3.40
Journal Grant	400.00
PSSA Journal	210.00
<b>Total Income</b>	<b>3,033.40</b>
Entry fees	20.00
Govt. Tax	6.70
Postage-Mailout	488.35
Print Journal	1,553.90
Prize	75.00
<b>Total Expenses</b>	<b>2,143.95</b>
<b>Total Income - Expenses</b>	<b>889.45</b>

**NET WORTH REPORT**

As of 31/12/99 (in Aus. Dollars)

<b>Acct</b>	<b>31/12/99 Balance</b>
<b>ASSETS</b>	
Cash and Bank Accounts	
PSSA	3,879.11
<b>TOTAL Cash and Bank Accounts</b>	<b>3,879.11</b>
<b>TOTAL ASSETS</b>	<b>3,879.11</b>
<b>LIABILITIES</b>	<b>0.00</b>
<b>OVERALL TOTAL</b>	<b>3,879.11</b>

***NEW ISSUES***

**Registration Envelopes**

The large size domestic registration envelope has recently appeared with a boxed Australia Post logo. It can be found in two forms, one with the boxed logo on the front and on the reverse and with plain paper inside, and the other with the logo on the reverse only and with the inside having an overlay 'Registered Post'.



### Parcel Post Olympic Issue

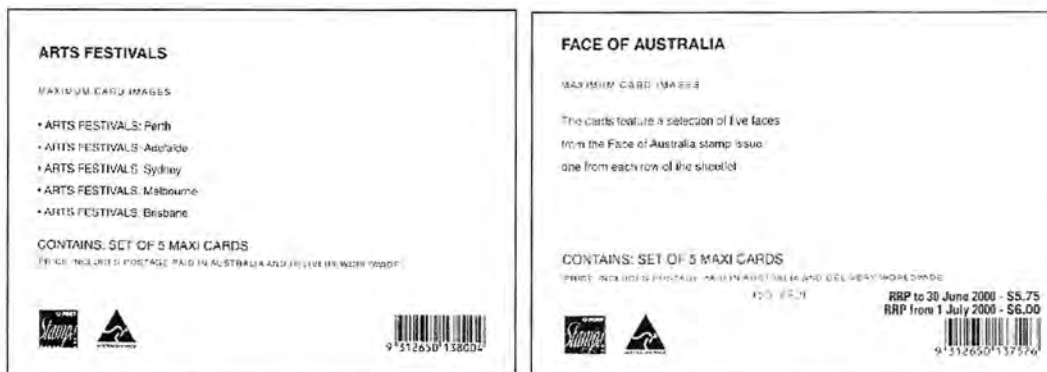


In March Australia Post released new pre-paid parcel satchels depicting members of the Australian Women's Hockey Team who are also Australia Post employees. The 3 kg satchel depicts Lisa Carruthers while the 500g satchel shows Katie Starre.

### GST on maximum cards

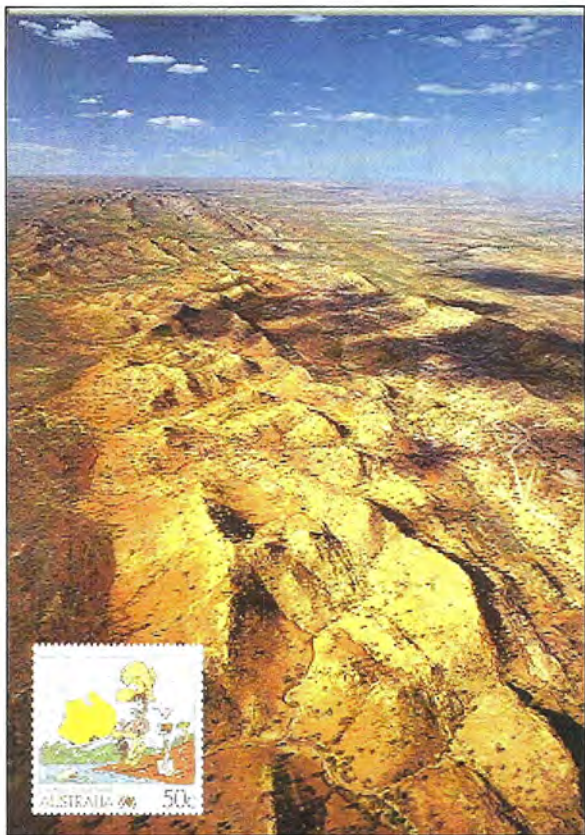
Our Australian readers will be aware of the arrival of the GST in Australia on 1 July 2000. The first signs of the GST was the inclusion of a Recommended Retail Price (RRP) which included GST on the packs of postal cards sold by Australia Post (which are also maximum cards) to accompany each issue. The packs included a RRP to 30 June 2000 and a higher price (including GST) after 1 July 2000. The pack insert for the Face of Australia issue is illustrated below.

The Arts Festivals issue postal cards were due for release on 24 February but did not appear until the following week. Martin Walker reports that advice from Australia Post staff was that the cards had been withdrawn due to a 'GST' problem. When they were issued the cards were the first issues of 2000 to appear without a RRP for the 1 July 2000 and beyond.



### Mt Isa Prepaid Postcard

A recent Philatelic Bulletin advised of a list of 'pictorial postcards' available from the Bureau. One of the cards on the list has not been previously recorded. This card is titled Mt Isa - North West Queensland and is illustrated below.



**Honduras**

Illustrated below is a Christmas stamped envelope from Honduras.



**Norway**

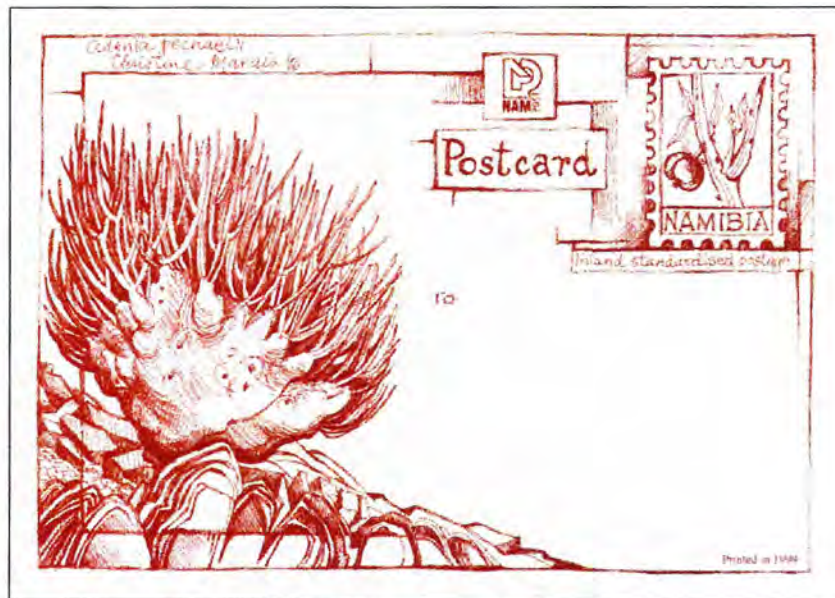
Illustrated below is a postal card issued by Norway publicising the Sydney Olympics.





### Namibia Flora Postcards

Namibia issued the third in a series of three Namibian Flora prepaid postcards on 20 December 1999. The first, depicting the *Lithops ruschiorum*, was printed in black on white in 1996. The second, showing the *Welwitschia mirabilis*, was printed in green on white and released in 1997. All three were designed for Namibia Post in 1996 by Christine Marais. The third card features the *Adenia pechuelii*, more commonly known as the Elephant's foot. This plant species is limited to the semi-desert region between the Walvis Bay district and the southern Kaokoveld. This plant species has an immense grey-green stem of up to about one metre tall with narrow woody branches on top and bears male and female flowers on separate plants. Very large specimens can be found on the Brandberg Mountain in Namibia. The status of this plant is endemic to Namibia and is protected. The cards sell at N\$ 1.00 each.



### NZ Campbell Island PSE

Unannounced until well after the issue date, New Zealand issued a 40c PSE (illustrated on the front cover) to commemorate the first dawn of the year 2000 in the Chatham Islands. The PSE was sold for 90c and had an official issue date of 16 December 1999. The Chatham Islands lie about 870 km east of Christchurch. The group consists of four main islands, including Chatham Island itself. The Envelope has the 40c New Zealand Post *First to see the New Dawn* stamp. The publicity states *We have made these special envelopes available to you as a New Zealand Post Collector, to add to your postal stationery collection or as a millennium souvenir*.

**New Caledonia**

Two prepaid postcards from New Caledonia for Christmas 1999 and New Year, issued on 20 December 1999 are illustrated below along with a 1999 window Cagou definitive pre-stamped envelope.



**Belgium**

Edgard Pockele-Denis has provided an example of a new postal card from Belgium. The card was issued on Monday 21 February to promote the Belgian Post Office's young philatelist's organisation. Membership costs 2000 BF (about \$80 Australian) for 12 months and includes a 'starter' pack including tweezers, magnifying glass, stamps etc.

