

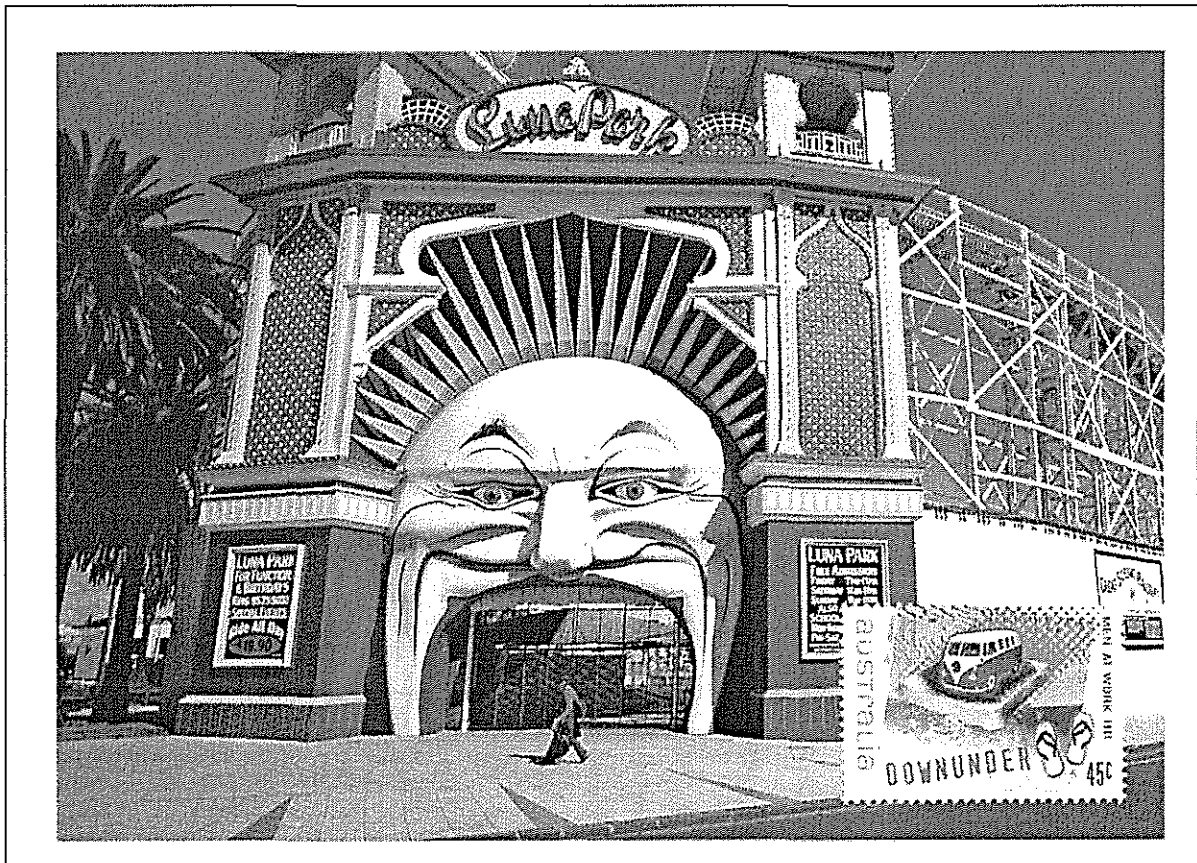
POSTAL STATIONERY

COLLECTOR

Journal of the Postal Stationery Society of Australia

Volume 9 No 3: Issue No 35

November 2003



THE POSTAL STATIONERY SOCIETY OF AUSTRALIA

The Postal Stationery Society of Australia has been established to encourage the collecting of postal stationery in Australia and New Zealand and to provide a forum for postal stationery collectors to maintain contact with other stationery collectors and to learn more about their hobby. The Society is not based in any particular city or state and plans to hold meetings at national and state level exhibitions. Subscription rate for 2003 has been set at \$35 (Australia) and \$50 (Overseas excluding New Zealand which is \$40). For further information please contact the Convenor, Secretary or your State Coordinator. Membership enquiries should be addressed to the Secretary.

OFFICE BEARERS:

CONVENOR: Ian McMahon, PO Box 783, Civic Square ACT 2608
SECRETARY: Judy Kennett, PO Box 16, Ulmarra NSW 2462.
Email: jkennett@tpg.com.au
TREASURER: John Crowsley, PO Box 2124, Ascot QLD 4007.
Email: j.crowsley@uq.net.au

STATE COORDINATORS

QLD Bernie Beston, PO Box 470, Kippa Ring, Qld, 4021
SA Martin Walker, PO Box 247, Torrensville Plaza, SA 5031
WA Ray Todd, PO Box 158, Dunsborough, WA 6281
NSW Bernie Doherty, PO Box 18, Waratah NSW
TAS Malcolm Groom, 225 Warwick Street, West Hobart Tas
VIC John Sinfield, PO Box 548, Heathmont, Vic 3135.
ACT Ian McMahon, PO Box 783, Civic Square ACT 2608
NZ Barry Scott, 123 Konini Road, Titirangi, Auckland 1007, New Zealand
NZ Norman Banfield, 14 Rata Rd, Raumati Beach Wellington New Zealand

Web page: <http://www.canberrastamps.org/>

Postal Stationery Collector

Editor: Ian McMahon

Contributions to the Postal Stationery Collector should be sent to Ian McMahon, PO Box 783 Civic Square ACT 2608. Articles on any postal stationery topic are welcomed and, if possible should also be submitted on 3.5 inch MSDOS disks in any word processing format (Word for Windows preferred). Illustrations should be good quality photocopies. Book reviews, news items, information on new issues and members classifieds are also welcome. Letters to the Editor and comments on articles published are encouraged.

COPYRIGHT: The copyright of the contents of the Postal Stationery Collector is held by the Postal Stationery Society of Australia. Items may be reproduced only with the written consent of the Editor.

ISSN 1324-2105

CONTENTS

	Page
<i>From the Editor</i>	66
<i>Treasurer's Report</i>	66
<i>New South Wales Reply Postcards</i> Ray Kelly	67
<i>Australian Stationery Used On Pitcairn Island</i> Malcolm Lacy	69
<i>Postal Stationery: Items of Character</i> Bernie Beston	70
<i>Postal Stationery for The World's Only Underwater Post Office</i>	71
<i>1910 Queensland View Cards – New Discoveries</i> Bernie Beston	73
<i>Queensland View Card – Again</i> Judy Kennett	78
<i>Changes To Australia Post's PPE Printing Service</i> David Collyer	79
<i>PSSA Forum: New Australian Pictorial And Promotional Stationery</i> PSSA Members	80
<i>National Photos Torres Strait Islands Art Private Order Envelope</i> Ian McMahon	84
<i>Listing of Australian Non-Denominated Postal Stationery</i> Ian McMahon	85
<i>New Zealand Pictorial Datestamp Service Postcards</i> Ian McMahon	86
<i>Literature</i> Ian McMahon	88
<i>Book Review</i> Vittorio Coscia	89
<i>From the Secretary</i>	90
<i>Literature</i> Judy Kennett	92
<i>New Issues</i>	93

FROM THE EDITOR

Paraguay: Postal Stationery Catalogue Edited by Brian Moorhouse; Contributors Joseph Hahn, Raymond Todd and Bill Walton

PSSA member Ray Todd has been a contributor to this monograph on the postal stationery of Paraguay.

The Monograph covers the postcards, lettercards, envelopes, and wrappers from the first issues of 1881-2 through to the late 1920s. In addition less well-known items from the 1950s and the 1980s and 1990s have been included.

The Monograph includes varieties and errors as well as details of proofs and earliest recorded dates. Items have been valued (in US dollars).

Published by Brian Moorhouse, PO Box 105 Peterborough PE3 9TQ UK, £8 plus postage. 36 pages, soft bound, black and white illustrations.

The Monograph is an important addition to the postal stationery literature as information on Paraguay stationery has been previously limited to dated listings such as Higgins and Gage.

TREASURER'S REPORT

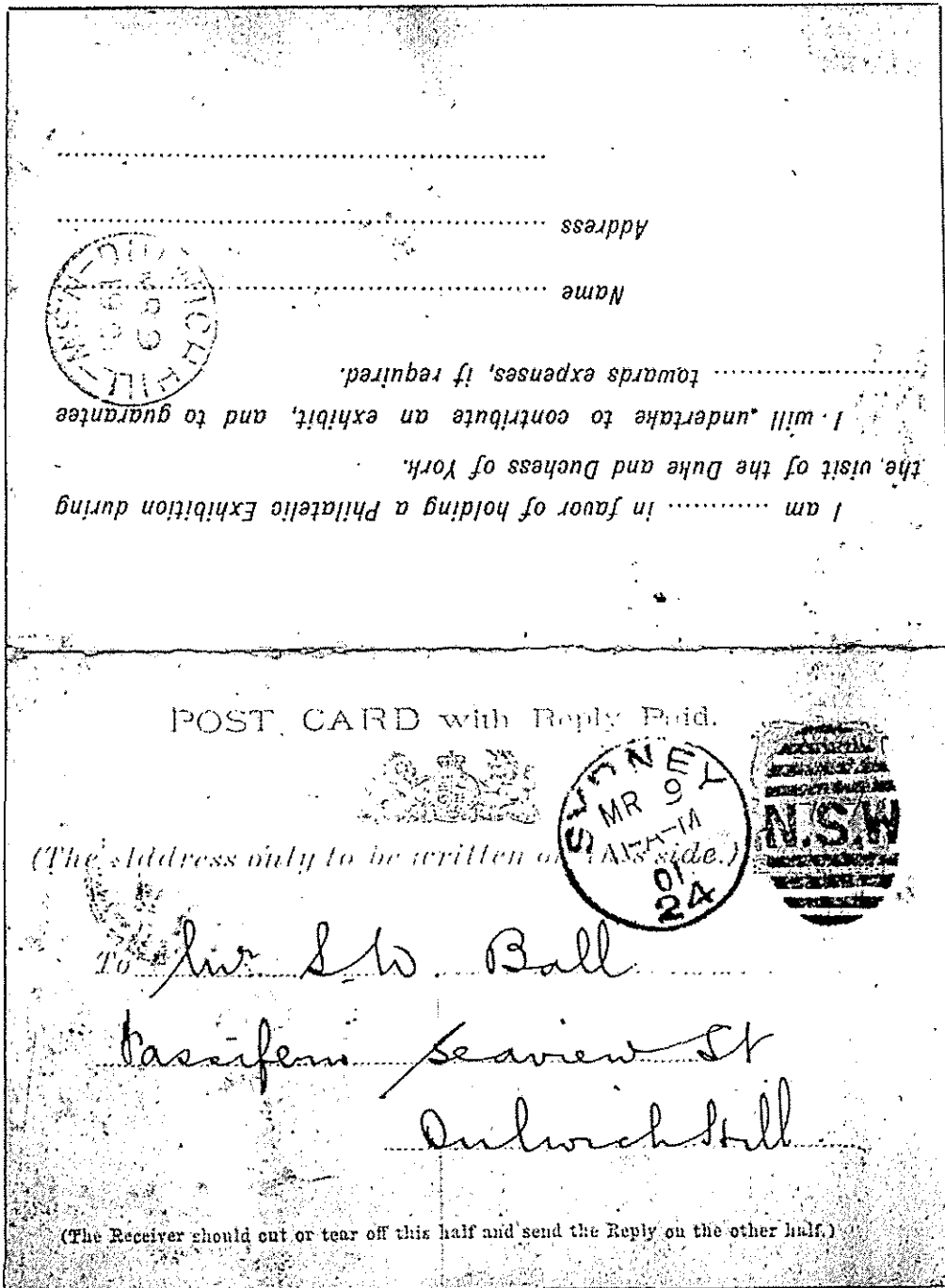
Profit & Loss Statement	
1/07/02 Through 30/06/03 (in \$s)	
Category Description	1/07/02-30/06/03
INCOME	
2002 Memberships	180.00
2003 Memberships	3,348.20
Bank Interest	0.75
Other Income	140.50
Postal Stationery Catalogue	891.92
PSSA Journal Sales	127.50
TOTAL INCOME	4,688.87
EXPENSES	
Bank charges	9.00
Book	93.00
Entry fees	50.00
Govt. Tax	13.50
Postage-Mailout	760.28
Print Journal	1,893.67
Prize	150.00
Service Charge	205.37
TOTAL EXPENSES	2,974.82
TOTAL INCOME - EXPENSES	1,714.05
Net Worth Report	
As of 24/09/03 (in Aus. Dollars)	
Acct	24/09/03 Balance
ASSETS	
Cash and Bank Accounts	
PSSA	8,854.68
TOTAL Cash and Bank Accounts	8,854.68
TOTAL ASSETS	8,854.68
LIABILITIES	0.00
OVERALL TOTAL	8,854.68

NEW SOUTH WALES REPLY POSTCARDS

Ray Kelly

Illustrated below is an interesting New South Wales reply postcard.

The card has been used on 9 March 1901 by the Sydney Philatelic Club to Mr S Bell, one of its members. It bears a printed message to members asking them to indicate their views on the holding of a philatelic exhibition in conjunction with the visit of the Duke and Duchess of York later in the year to open the Australian Parliament.



It also asked them to consider providing a guarantee to a fixed amount to cover expenses of the exhibition and to indicate whether they were prepared to exhibit.

The notice is in the name of A F Bassett Hull, Hon Secretary. The reply portion has a printed form for the member to complete.



SYDNEY PHILATELIC CLUB,
Box 704, GENERAL POST OFFICE, SYDNEY,
1st March, 1901.

At a meeting held on the 20th February, it was decided that all the members should be asked to vote upon the question as to the desirability of holding a Philatelic Exhibition during the visit of the Duke and Duchess of York, and to state whether they are prepared to contribute exhibits, and to join in a guarantee of expenses to a stated amount.

I am therefore to ask that you will fill in the blanks on the attached reply card, and post the same as early as possible. If you are not in favor of holding an exhibition, please write the word "not" in the blank in the first line.

A. F. BASSETT HULL,
HONORARY SECRETARY.

REPLY POST CARD.



(The Address only to be written on this side.)

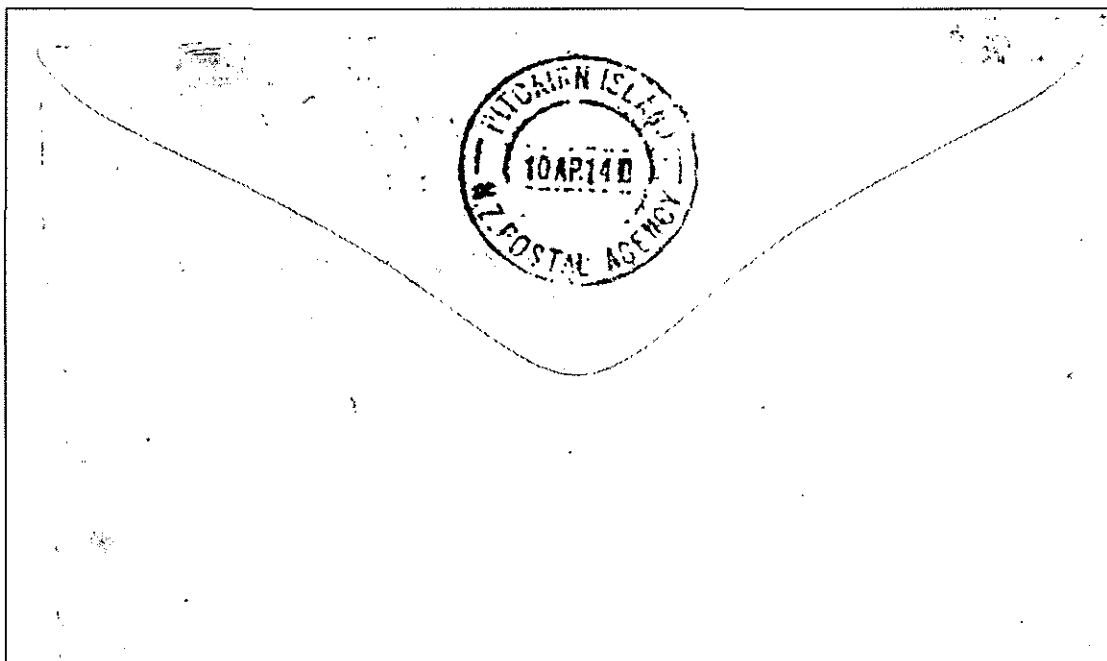
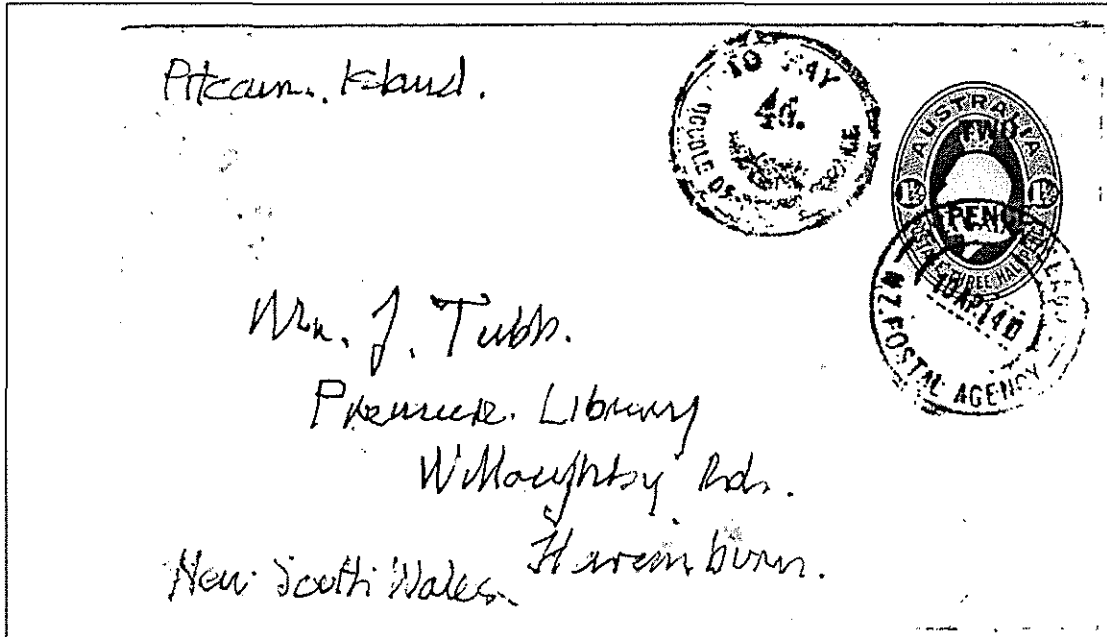
To The HONORARY SECRETARY,
Sydney Philatelic Club,
Box 704, G.P.O., Sydney.

AUSTRALIAN STATIONERY USED ON PITCAIRN ISLAND

Malcolm Lacy

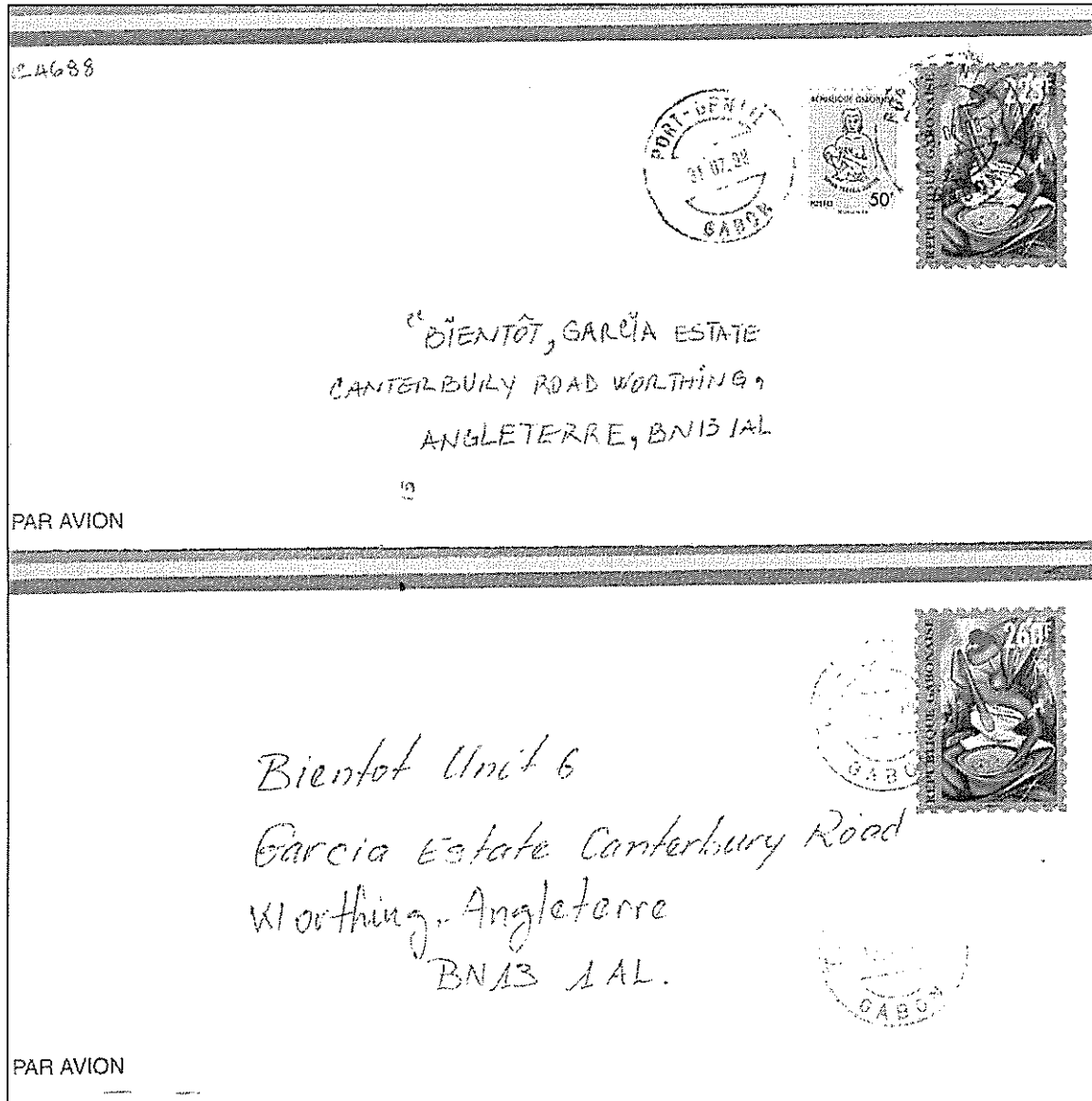
Illustrated is an Australian 1½d George V stamped envelope used from Pitcairn Island on 10 April 1940 to Naremburn, Sydney, New South Wales.

The stamp has been cancelled with the Pitcairn Island NZ Postal Agency datestamp and has been taxed 4d. The NZ Postal Agency operated on the Island from 7 June 1927 until 14 October 1940, using New Zealand stamps.



POSTAL STATIONERY: ITEMS OF CHARACTER

Bernie Beston



Gabon Stationery Envelopes are not as common as those from Metropolitan France. Whilst Jean Marie Le Pen might not agree with me, one of the real benefits of immigration is the increased use of Postal Stationery and hence that factor alone is sufficient to laud further immigration to Australia.

Will someone send Phillip Ruddock a pack of used worldwide stationery with the note not to cut out the Stamp images? Just in case he seeks the advice of some American. I recently have seen two lots of CUT SQUARES on Ebay [India and British Guiana]. Just made me cry.

Anyway, back to the story. Both envelopes are used in 1998. One is uprated to 275F and the other has the rate of 260F. Is the uprated envelope 15F overpaid? What were the letter rates and when did they change. Was this the rate to France only, or to all of Europe?

POSTAL STATIONERY FOR THE WORLD'S ONLY UNDERWATER POST OFFICE

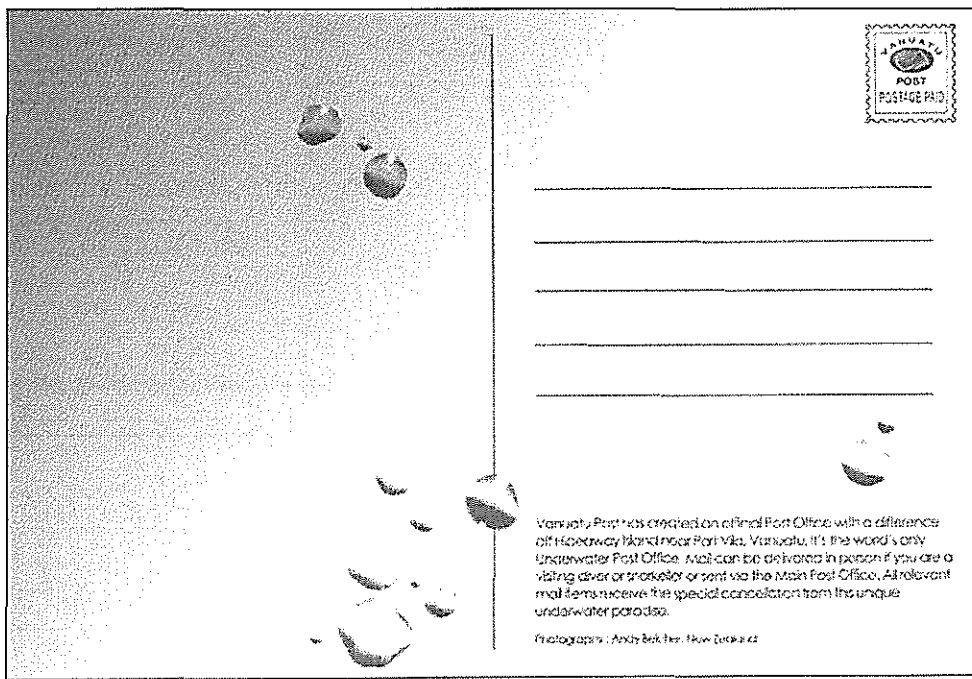
Ian McMahon



Vanuatu Post has created the world's only Underwater Post Office. Situated within the Hideaway Island marine sanctuary, the Post Office sits in around three metres of water and both divers and snorkellers are able to post special "waterproof postcards".

During opening hours the cards will be cancelled/embossed by the postal staff in the Underwater Post Office. Instead of being stamped with ink to show that the card has been sent, the Post office has developed a new embossed cancellation device.

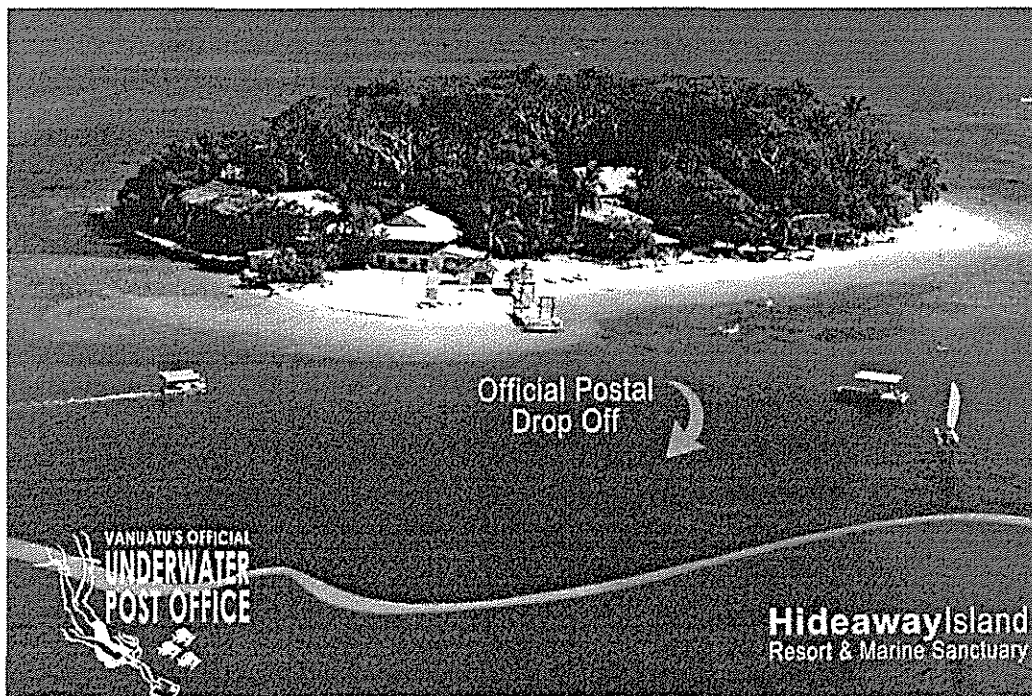
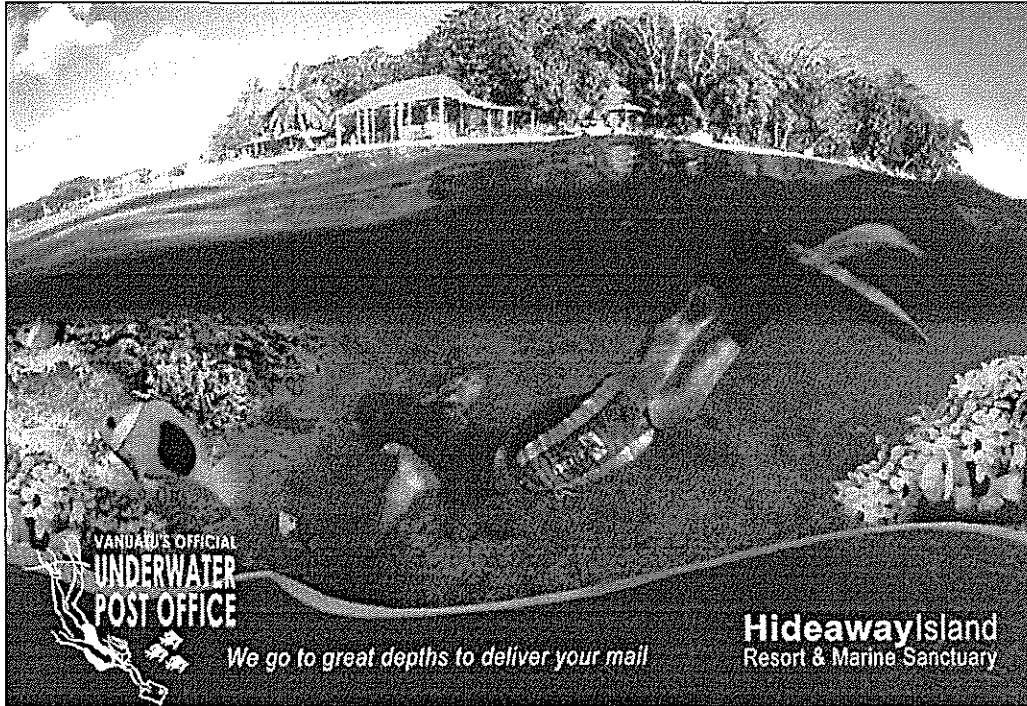
Placed on site by Vanuatu Post, this official and currently unique postal location was opened for business in May 2003. Opening hours are posted on the beach at Hideaway Island, and a special flag is raised on a float above the site when there are postal workers in the water. (Some Vanuatu Post Office staff have completed their Open Water dive training at Hideaway Island.)



Postal Stationery Collector

Out of hours the post cards can be posted in the underwater post box attached to the post office or taken to the main post office in town. All are guaranteed to receive the special cancellation from this unique underwater paradise before being delivered both locally and internationally.

Two postal stationery cards have been issued for the service, both inscribed "Vanuatu Post Postage Paid". The cards are sold by Vanuatu Post for \$US2.50 mint and \$4 embossed with the special cancellation.



1910 QUEENSLAND VIEW CARDS – NEW DISCOVERIES

Bernie Beston

In May this year a number of Lots were offered at a Sydney Commercial Auction House. They included items from the Estate of the late Dr. L. Abramovich, who died many years ago. He was a New South Wales Medical practitioner and prominent Sydney collector, well known for his Australian Commonwealth collection.

Some of these items were later offered on ebay and included some hitherto unrecorded view cards described here. When John Sinfield wrote about these Cards¹ he stated that:

“Probably, in time we will determine that 32 Views were provided, since this would fit in with the plate printing format.”

At that time (August 1999) 29 different views had been recorded, plus one card, which had the same description but an alternate View, and was likely a replacement picture.

John reported an additional Card², and I updated the list to 33 by May 2000³.

The new discoveries are

- | | | |
|-----|--|------------|
| 34. | View from Cairns Range, Barron River in Foreground | (Figure 1) |
| 35. | Hauling Cedar, Atherton- Cairns Railway | (Figure 2) |
| 36. | Neurum Creek, near Woodford, Caboolture-Woodford Railway | (Figure 4) |

View No. 34 is in the brown/white stock, which was previously thought to be a proof. It is now more likely that it was from a trial on an alternate card stock, which was replaced by the more commonly known white stock. This has now been recorded on at least 5 different views.

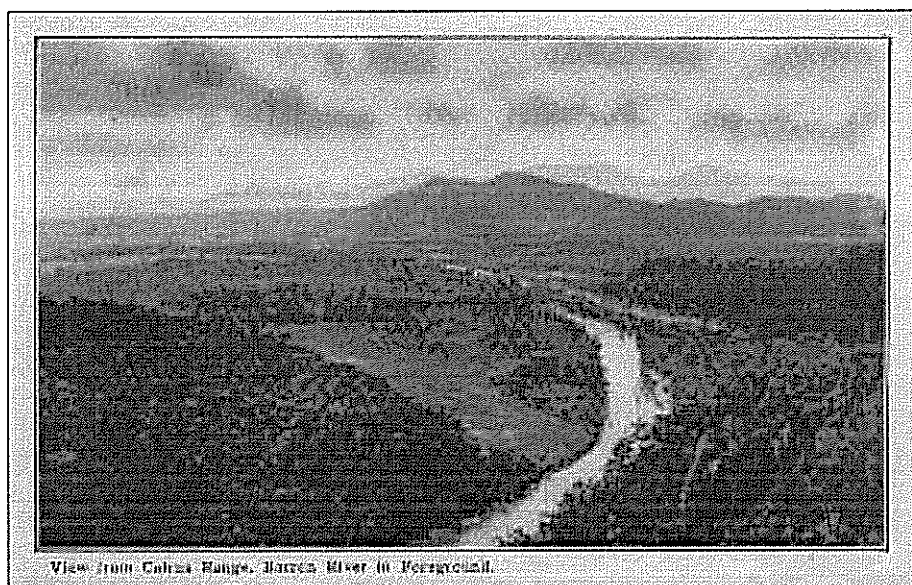


Figure 1

¹ Postal Stationery Collector August 1999.

² Postal Stationery Collector November 1999.

³ Postal Stationery Collector May 2000.

View No 35 was in both the brown/white stock and white stock. The clarity of the View in the white stock was very obvious, and the improved reproduction on this card type may account for the replacement of the card.

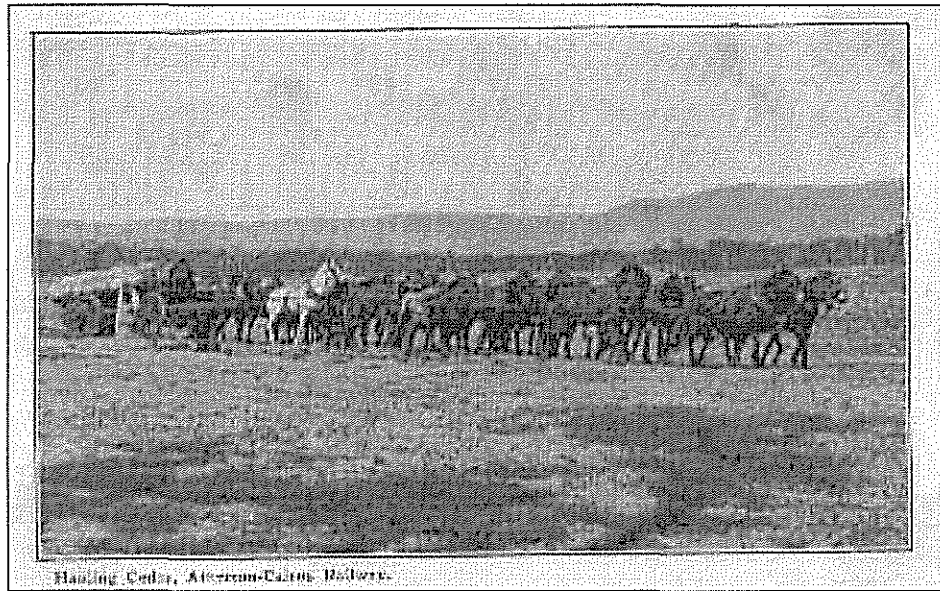


Figure 2

View No 36 created a real sensation amongst Queensland Postal stationery collectors, as it was in full colour (Figure 3). This is identical to the colour views common to the Tourist and Intelligence Bureau Cards. But this view is unknown to me either in black and white or colour from that series. The view has no caption, and the scene is in reverse of the issued card.

The same View in black and white (Figure 4) in the find has the view in the correct position, but with the caption reading as above "Neurum Creek, near Woodford, Caboolture-Woodford Railway". This is at variance with the known black and white Card, which reads "Hauling Timber, Neurum Creek, South Queensland (No. 10) (Figure 5)"

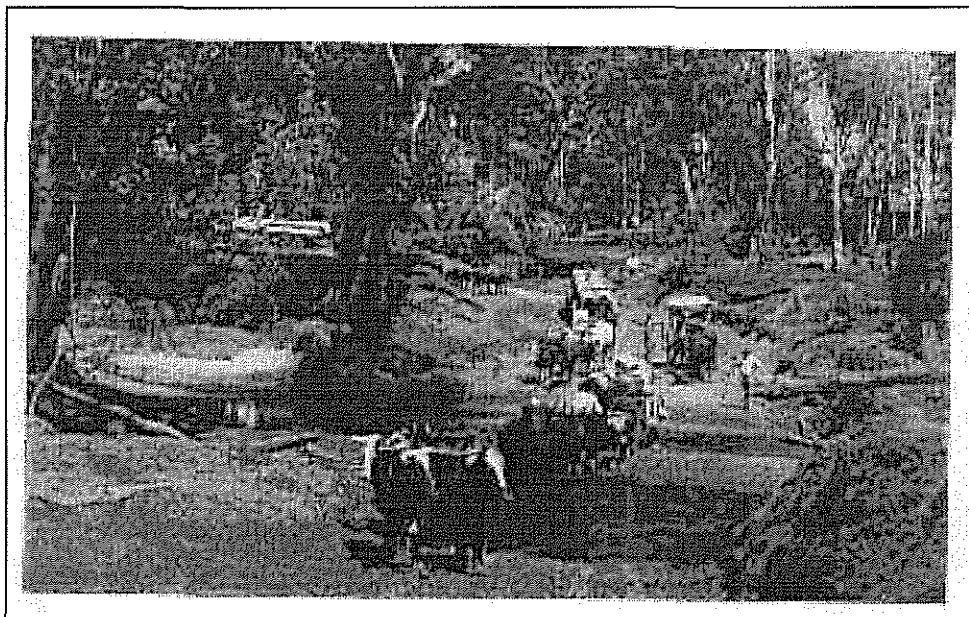


Figure 3

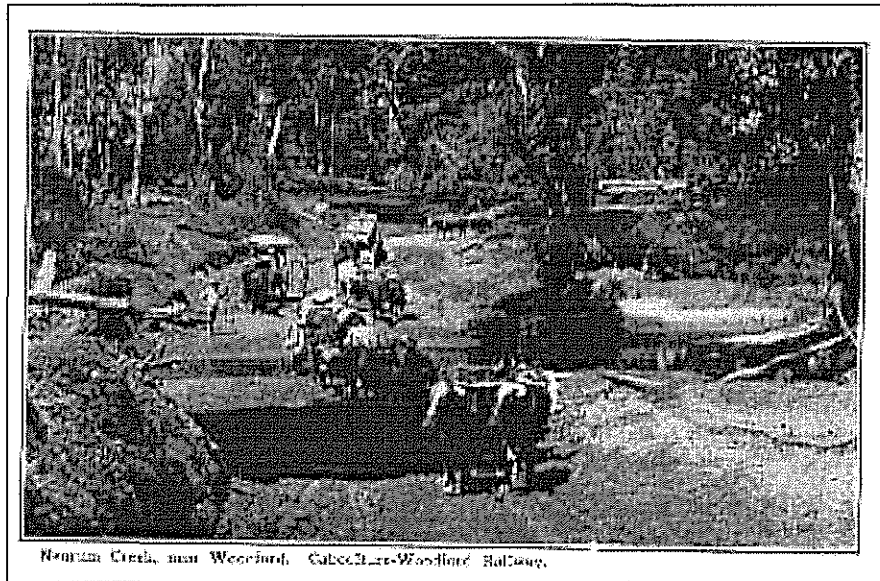


Figure 4

The additional card in the find is also in full colour and is a view of the Rockhampton Custom House (Figure 6). This view is not known in the Tourist and Intelligence Bureau Cards series. Both of the Views, like all views, were taken from the photographs supplied by the Tourist Bureau and generally attributed to the Artist/ Photographer H. W. Mobsby. Many of these were recorded in Books of photographs published by the Bureau in the 1907/17 period. The Customs House is shown in a Picture of the Views of Rockhampton, in black and white (Figure 7) Both of these coloured cards are mint as are all of the new b/w view cards.

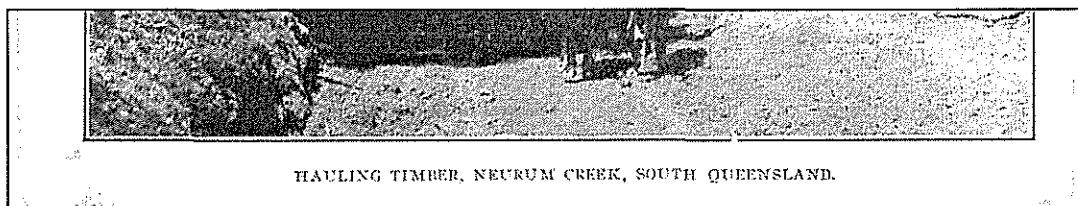


Figure 5 The known Hauling Timber caption

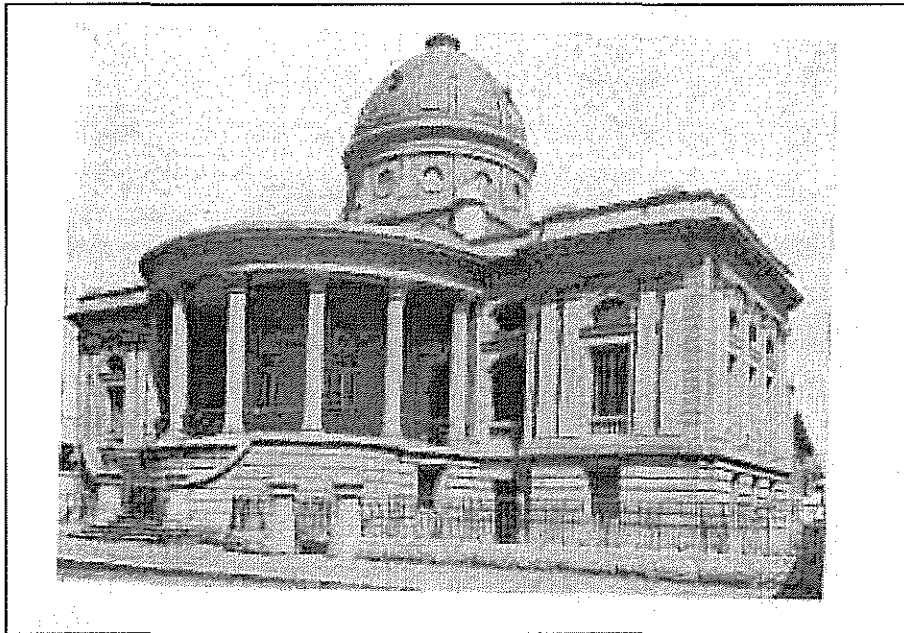


Figure 6

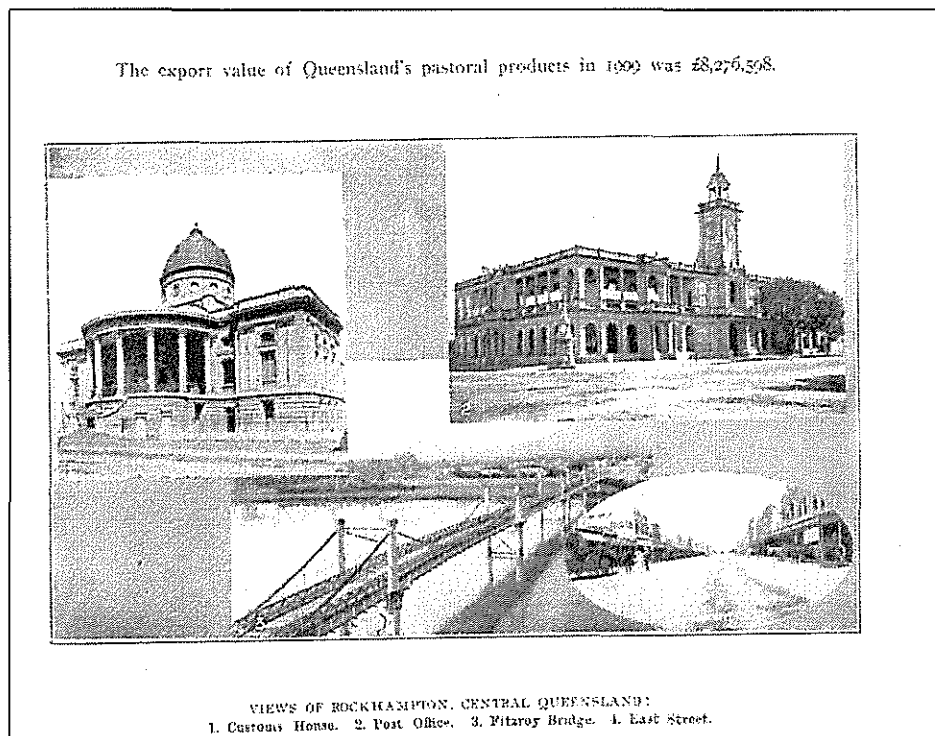


Figure 7 Views of Rockhampton

The question is whether these new coloured cards were accidentally produced on the wrong preprinted stamped card stock or were the trials for public sale. And it is unlikely that only two cards were printed, so there should exist somewhere at least another 14 or 16 cards, depending on the plate being either 16 or 18 up. Genuinely issued used cards would of course create another story.

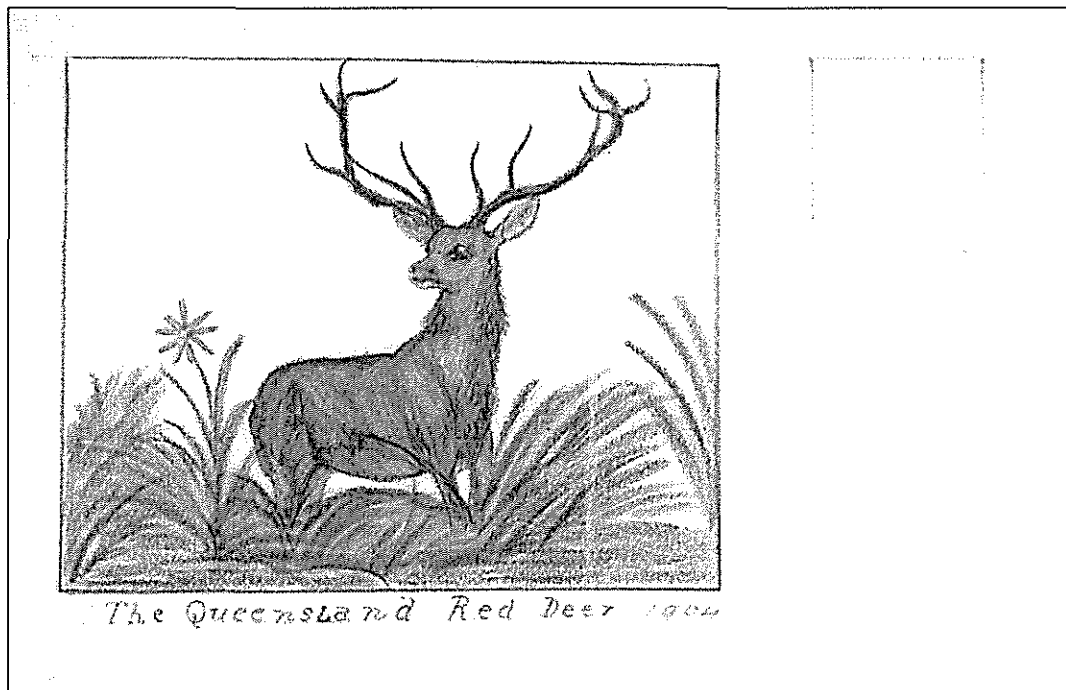
Editor's Note

As Bernie Beston has indicated, Dr Abramovich was a well-known Sydney collector of Australian Commonwealth material and a frequent author of articles in the Bulletin of the Australian Commonwealth Collector's Club.

Besides the Queensland cards described above, Dr Abramovich's collection included many interesting Australian Commonwealth stationery essays, including essays from a 1904 competition to design a Commonwealth postcard.

An article in the April 1983 issue of the Bulletin of the Commonwealth Collectors Club of NSW reported that the March 1983 PHILAS Auction included the following items from his collection:

1. Postcard addressed to the "Hon Drake – Postmaster General", endorsed on the reverse 'an idea for new postcard'.
2. Essay prepared by Vaughan, the Queensland Government Printer, using the Vaughan stamp essay and a view of timber-cutting in the lower left hand corner.
3. Two essays prepared by the SA Government printer with Commonwealth 1d 'stamps' and South Australia in the heading.
4. Essay for a pictorial postcard with view of Princes Bridge Melbourne on reverse.
5. Essay from the 1904 Australia-wide competition submitted by Miss Brennan of Brisbane depicting a Queensland Red Deer (G04/560)
6. Hand-painted essay from Fitzroy, Victoria (G04/4173)
7. Two essays by the artist Eden depicting the River Torrens and a Swagman's Bush Scene.
8. Three different Specimen 4d orange King George V registered envelopes
9. OHMS Specimen 4d orange King George V registered envelope
10. Sample of De La Rue registered envelope stock



Miss Brennan's entry into the 1904 Australia-wide competition

QUEENSLAND VIEW CARD – AGAIN

Judy Kennett

I was very interested to read ‘Auction News: New Queensland View Cards’ in the August 2003 issue of *Postal Stationery Collector*. Bernie Beston’s article (above) has further information about these cards.

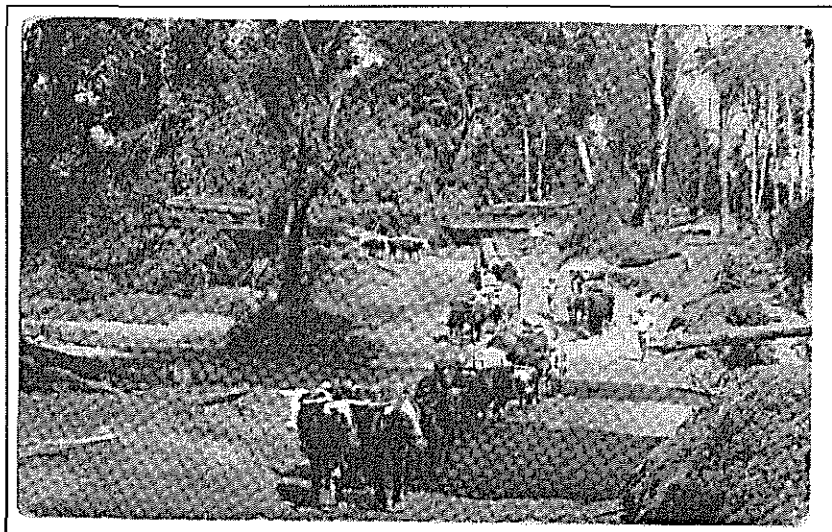
After looking at the illustrations of the views on these five very pricey cards, I went to look at my small collection of older Queensland (chiefly Sunshine Coast) commercial postcards. Sure enough, I found a card with the view shown as No 4 in the *Postal Stationery Collector* listing ‘Neurum Creek, near Woodford, Caboolture – Woodford Railway’, without caption, reversed and coloured’. The colours in my card are nothing like those shown in the illustration in the journal, so I’ll send the Editor a colour scan for comparative purposes.

The back of my commercial card is very ordinary – “The Special Series, coloured” is the only publishing information given. A message with birthday greetings was addressed to Bald Hills, Brisbane. The remains of a ‘Brisbane’ cds are on the top right hand corner of the card, but no date of posting remains. Unfortunately, the adhesive has been removed.

As for the provenance of my card – it came from a Canberra Picture Postcard Club postal auction in 2002. The description in the auction list read: ‘Australia – Queensland – Timber getting Neptum [sic] Creek, no publ, “The Special Series coloured, PUSR’. I have no idea who the vendor was, or where he obtained his information about the card, since there is no caption. However, I thank him or her for putting a reserve of three dollars on the card. I paid just a couple of dollars more for it.

Incidentally, the appearance of these cards on eBay, and the frenzied bidding that must have ensued, attracted the attention of a writer in *The Bulletin* of the Queensland Card Collectors’ Society No 156 July/Aug 2003. He has in his possession another card from this expensive stationery series with a vertical view captioned ‘Country Road, North Queensland’. His copy is damaged, but postally used at Ipswich Queensland on 16 December 1910.

Who knows what will turn up next? We look forward eagerly to the next, and perhaps future, issues of *Postal Stationery Collector*.



CHANGES TO AUSTRALIA POST'S PPE PRINTING SERVICE

David Collyer

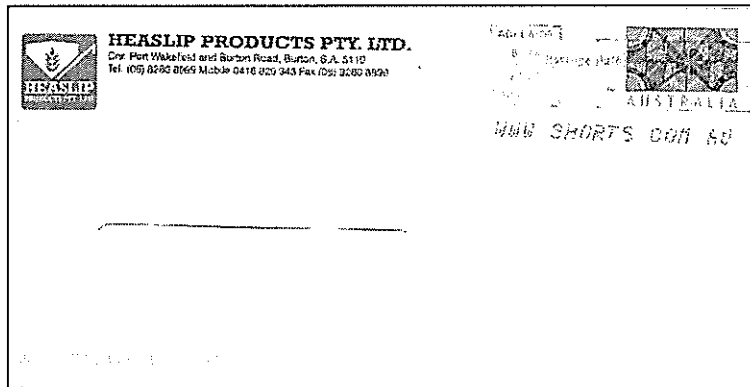
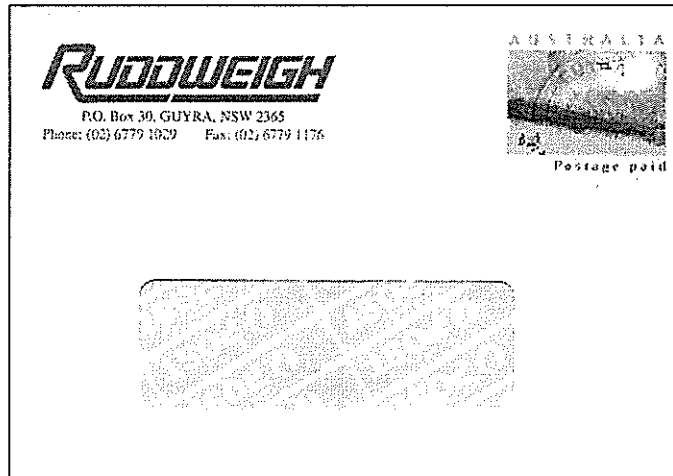
Australia Post offers a service to bulk purchasers of Postage Pre-Paid Envelopes (PPEs) whereby they will print the purchaser's name and address and logo on the envelopes.

In June they circulated a letter and a brochure to their Business customers who use the service indicating that the method of printing was being changed to Digital Printing similar to that used by photocopiers. Previously the client's details were added to the envelopes using typography or lithography, providing a means for collectors of this material to distinguish printing added by the Post Office to that added to envelopes by the purchaser.

The change in printing method obviously has implications for collectors working with envelopes produced under the service as it will be more difficult, if not impossible, to identify printing added by the Post Office. The letter and the pamphlet do not indicate with whom Australia Post has a production contract. In the case of the Sydney Olympic Gold Medal winner's issue the producer was Fuji Xerox. So far I have not seen anything which may be one of the new products. Old stock may still be out there and is being used up.

I have seen a small number of Torres Strait Island designs with company details added and these look like the normal product produced by typography or lithography.

The report on the Torres Strait Island design PPEs in the last issue of PSC did not mention the internal underlay. This is a new design and its use across all types of envelopes in the series is new. Previously the underlay has only been used on the window faced envelopes.



PSSA FORUM: NEW AUSTRALIAN PICTORIAL AND PROMOTIONAL STATIONERY

Compiled from contributions by PSSA Members

Pictorial Postcards

Australia Post continues to challenge postcard collectors with unannounced new prepaid postcards and promotional issues. The information in this article has been compiled from the contributions of many PSSA members including Martin Walker, Craig Chappell, Mark Diserio, Bernie Beston and Ian McMahon.

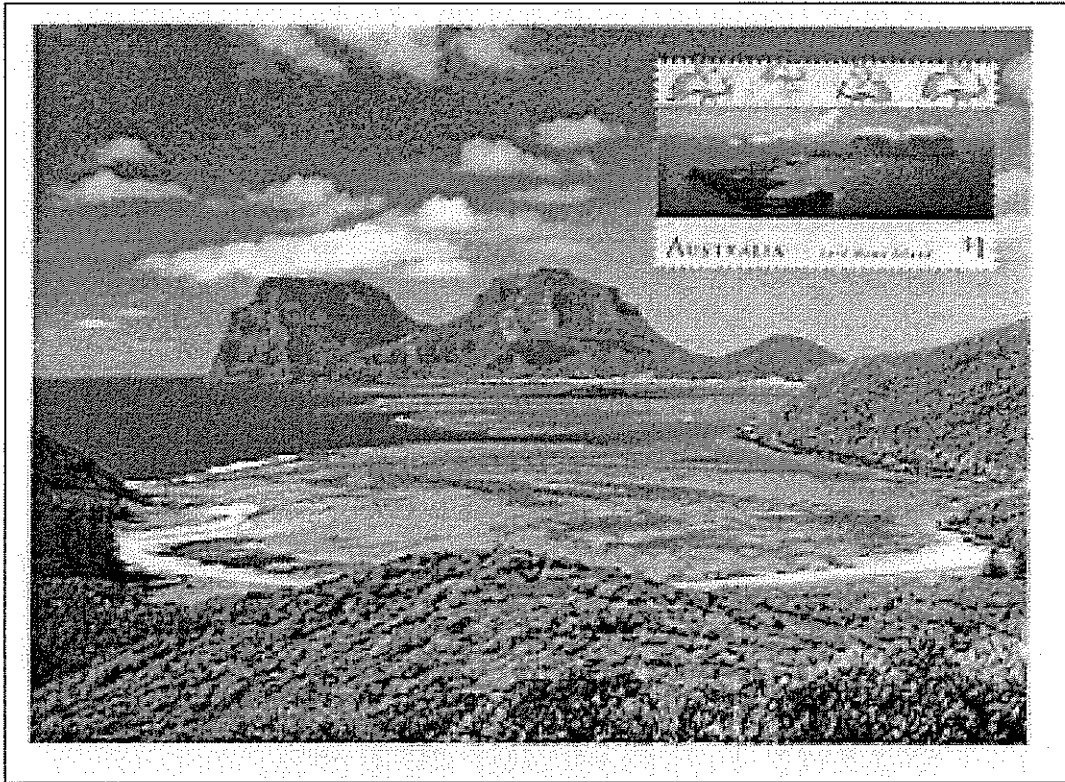
In mid-July Martin Walker reported that Australia Post had quietly released another batch of prepaid cards. On 15 July he spied four new cards at the Adelaide GPO. Adelaide has determined the date of first supply of the SA/NT views to be May 27, 2003. The full list of cards as given on an Australia Post leaflet provided to him are:

- 16752 - Byron Bay, NSW
- 16753 - Wollongong, NSW
- 16754 - Lord Howe Island, NSW
- 16755 - Melbourne Exhibition Centre, Vic
- 16756 - Melbourne Aquarium, Vic
- 16757 - Wineries Yarra Valley, Vic
- 16765 - Flinders Street Station, Vic
- 16758 - Luna Park, Vic
- 16759 - Bolte Bridge, Vic
- 16760 - Kakadu, NT
- 16761 - York (sic) Peninsula, SA
- 16763 - Gold Coast, Qld
- 16764 - Fraser Island, Qld
- 16766 - Monkey Mia, WA
- 16762 - Glenelg, SA

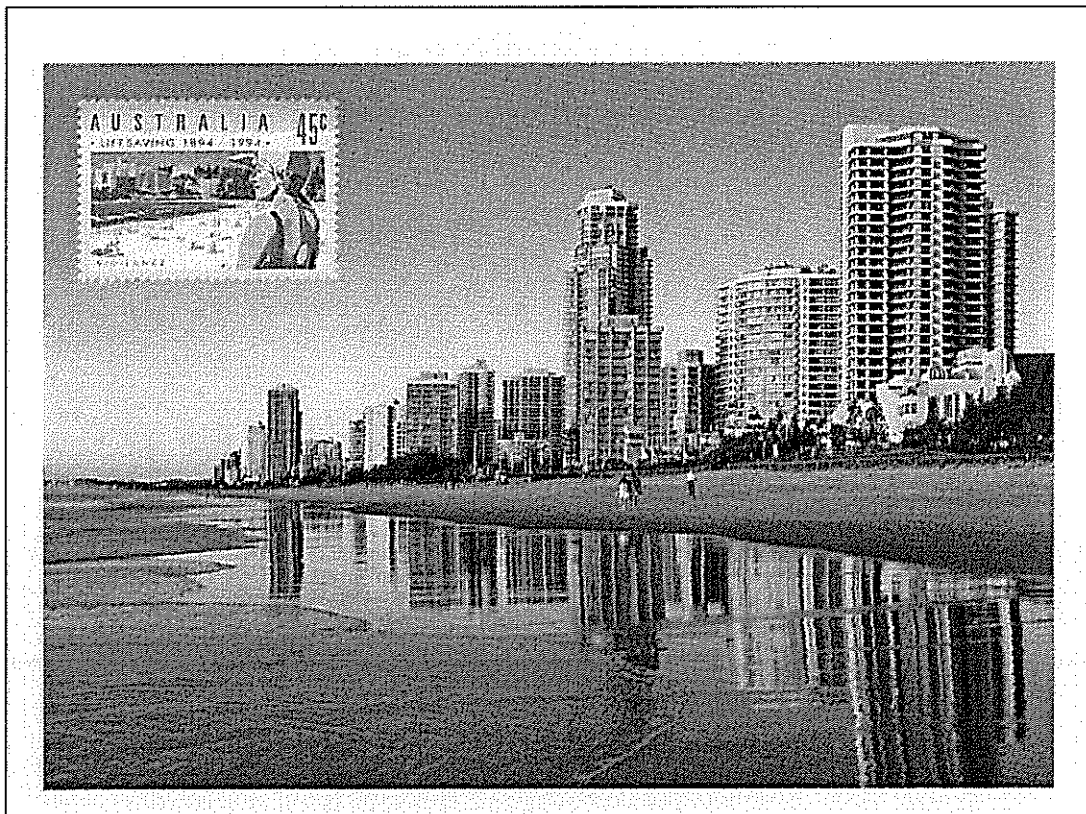
Martin further reported that the Kakadu, Yorke Peninsula, Glenelg and Monkey Mia Cards were on sale in Adelaide. The Yorke Peninsula card is mis-spelled "York" and according to local sources will be reprinted with corrected spelling. Possible future cards for SA include Mount Gambier, Barossa Valley, Eyre Peninsula, Darwin and "City of Churches". The Lord Howe Island card shown in the brochure shows a reversed view of the Island. The card may have been issued in this form but if so was quickly recalled and replaced with a corrected card. Can anyone confirm that the error card was issued?

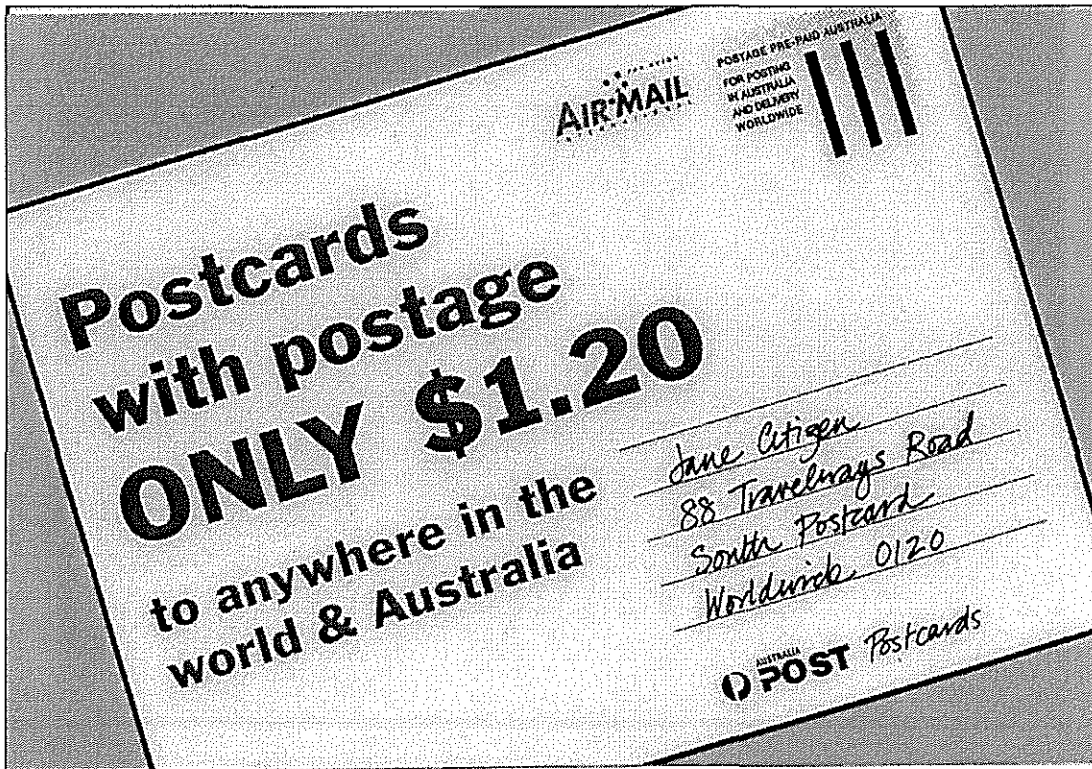
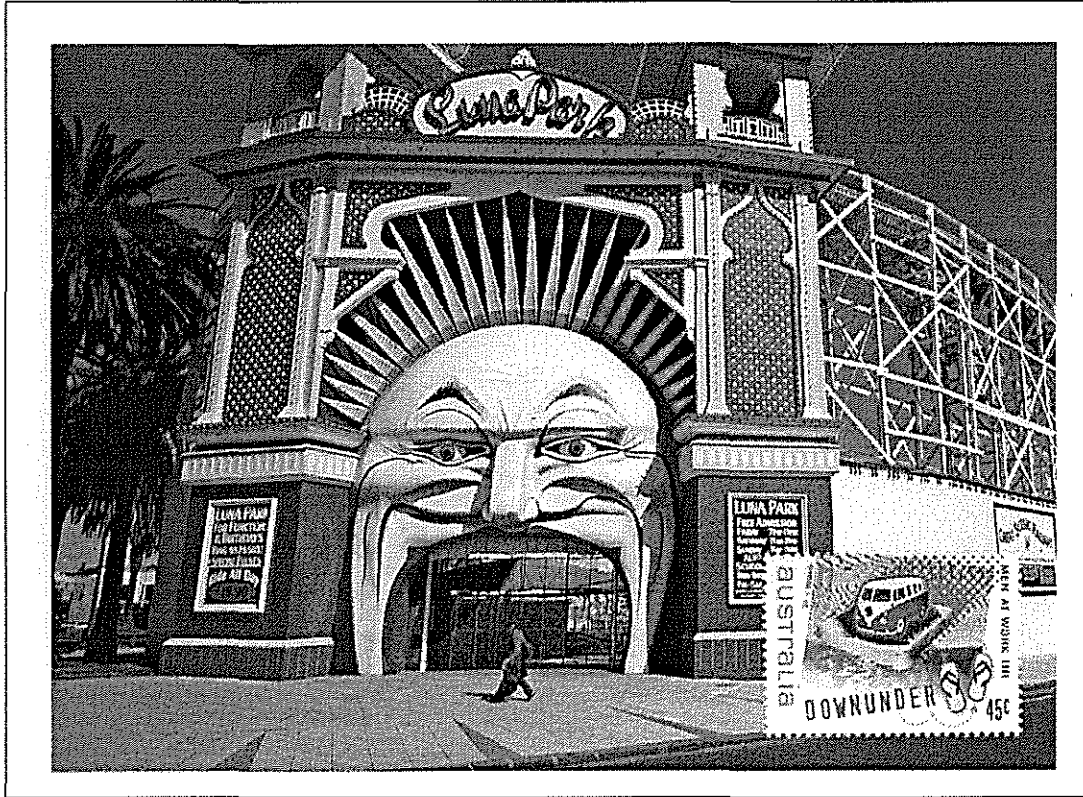
Mark Diserio reported that the Victorian cards were available soon after in Melbourne while the NSW and Queensland cards became available in one post office in Canberra by early August. Later some of the Victorian cards, the Kakadu card and the Monkey Mia card became available at the same Post Office. The Lord Howe Island card was first seen in Canberra at a small agency Post Office.

Bernie Beston has provided an example of point of sale advertising for the cards which is in pink plastic.



Original reversed design for the Lord Howe Island card

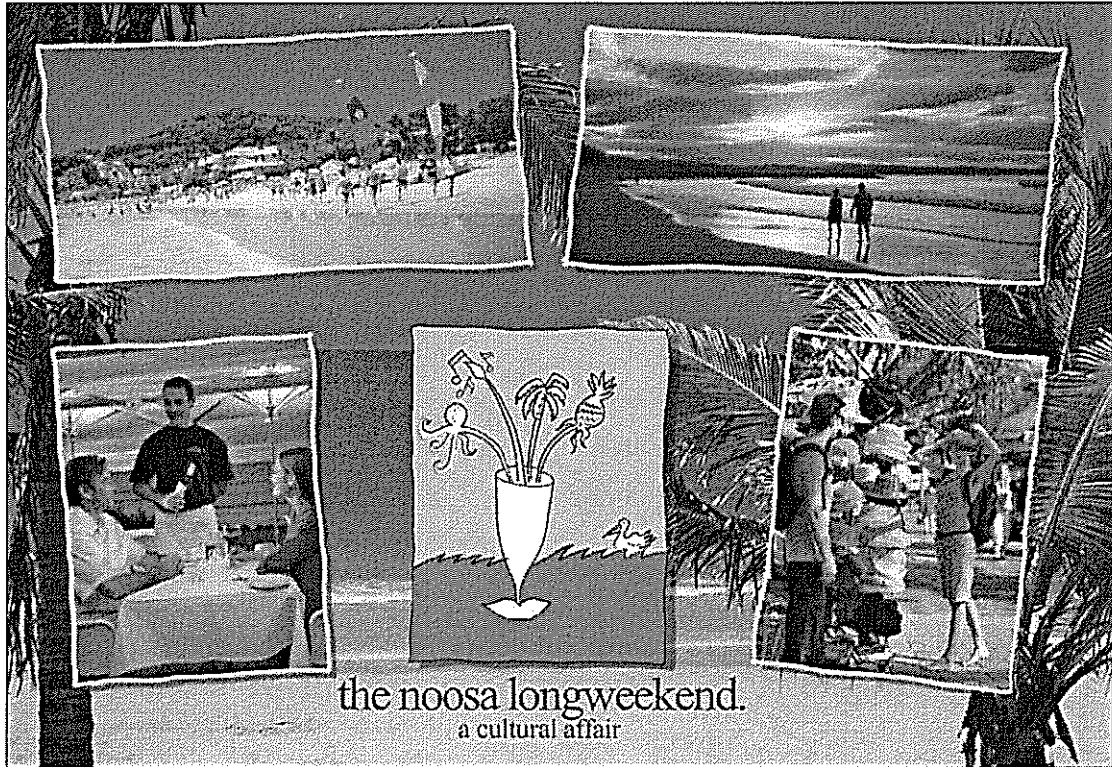




Noosa Longweekend Postcard

Craig Chappell has advised a new promotional pre-paid card for the noosa longweekend – a cultural affair. The card depicts Noosa views on the back while the front includes the usual promotional postage pre-paid imprint (similar to the Olympic athlete cards) and the text 'Australia Post proudly supports the noosa longweekend'.

The Noosa Longweekend, from 27 June to 6 July 2003, brings ten days of international, national and local talent across a range of cultural interests featuring David Williamson's play "Flatfoot", with Drew Forsyth and Kelly Butler on stage. Music events including The Goldner String Quartet, Brett Dean and The Mike Nock Jazz Quintet. Bruce Beresford as "Cinema Great", Peter Carey and Thomas Keneally feature in its literary program and John Pilger features in the 'Forum' module. Dr Michael Gloster leads daily enviro walks.



Australia Post proudly supports
the noosa longweekend



POSTAGE PRE-PAID AUSTRALIA



FOR POSTING IN AUSTRALIA
AND DELIVERY WORLDWIDE

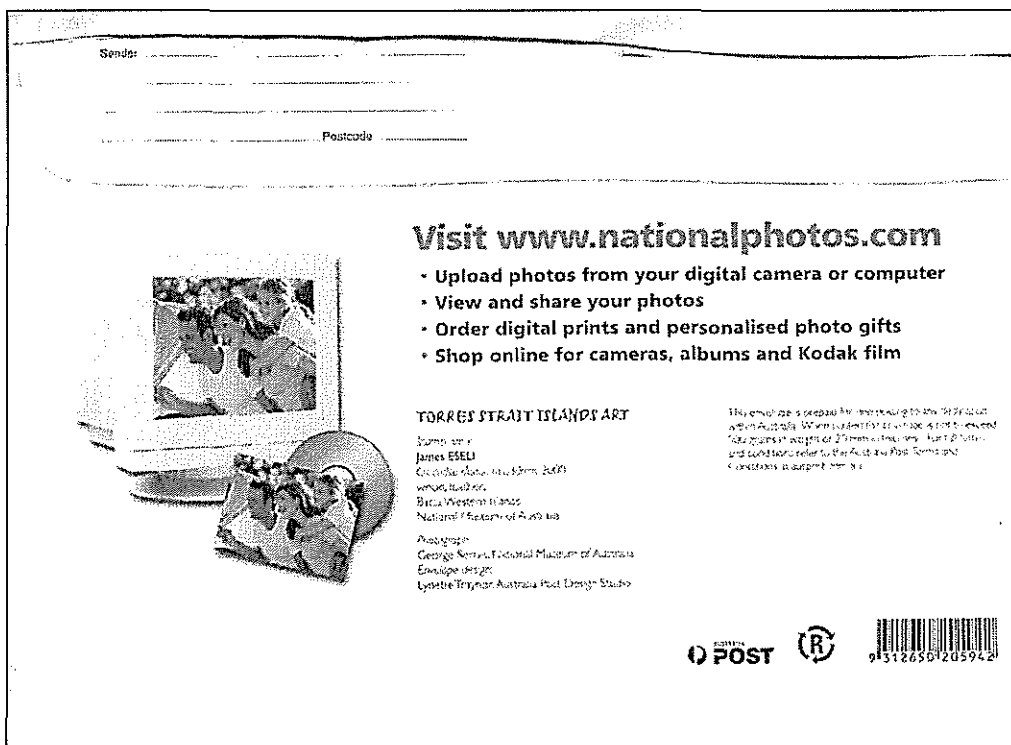
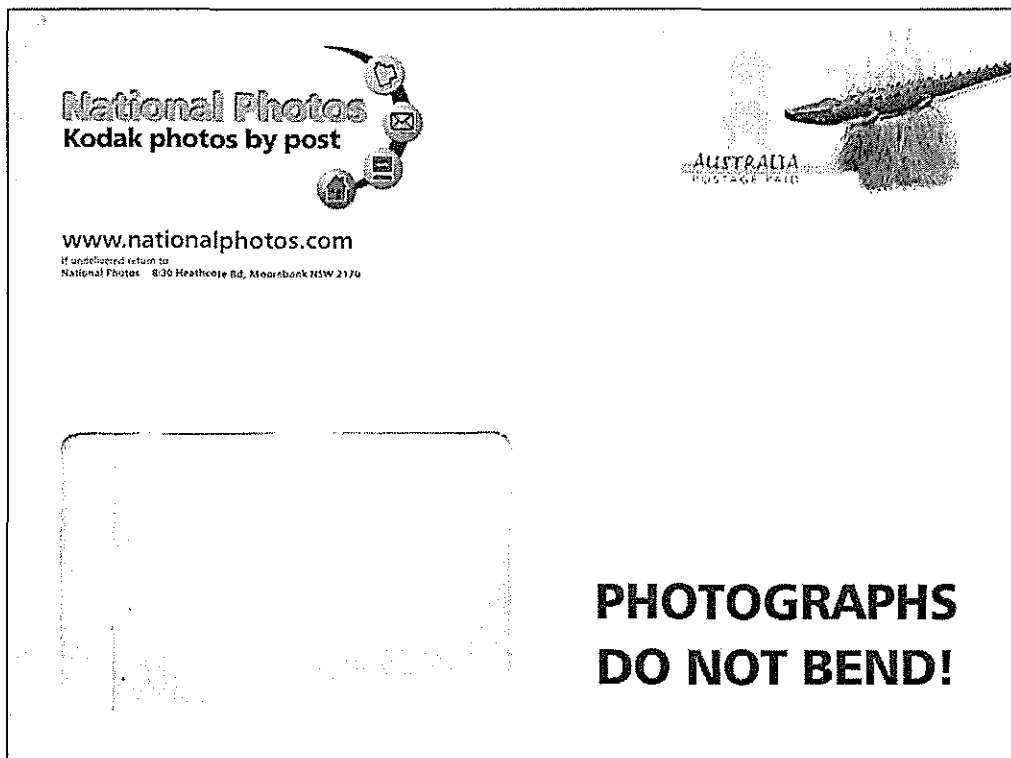
Photos courtesy Tourism Noosa

--	--	--	--

NATIONAL PHOTOS TORRES STRAIT ISLANDS ART PRIVATE ORDER ENVELOPE

Ian McMahon

National Photos, a mail-order film processing company, has continued the use of private order window PPEs to return single sets of developed prints with the use of a Torres Strait Islands Art envelope. The envelope depicts a Crocodile Dance Headress by James Eseli.



LISTING OF AUSTRALIAN NON-DENOMINATED POSTAL STATIONERY

Ian McMahon

Postcards		5 August 2003	Peace and Goodwill
		Maximum cards	
2003	Pictorial postcards	(-)	Tree
(\$1.20)	Cape Byron Lighthouse	(-)	Star
(\$1.20)	Wollongong, NSW	(Set price: \$2.90)	
(\$1.20)	Lord Howe Island, NSW		
(\$1.20)	Melbourne Exhibition and Convention Centre, Vic	2 September 2003	High Court
		Maximum cards	
(\$1.20)	Melbourne Aquarium, Vic	(-)	Sir Samuel Griffith
(\$1.20)	Wineries Yarra Valley, Vic	(-)	Justice
(\$1.20)	Flinders Street Railway Station, Vic	(Set price: \$3.45)	
(\$1.20)	Luna Park, Melbourne		
(\$1.20)	Bolte Bridge, Vic	August? 2003	Noosa Promotional Card
(\$1.20)	Saltwater Crocodiles, Kakadu	(-)	Noosa longweekend
(\$1.20)	York (sic) Peninsula, SA		
(\$1.20)	Surfers Paradise	24 September 2003	Bugs and Butterflies
		Maximum cards	
(\$1.20)	The Pinnacles, Fraser Island	(-)	Ulysses Butterfly
(\$1.20)	Bottlenosed Dolphins, Monkey Mia	(-)	Leichhardt's grasshopper
(\$1.20)	Gleneilg, SA	(-)	Vedalia ladybird
		(-)	Green Mantid
8 July 2003	Genetics	(-)	Emperor gum moth
Maximum cards		(-)	caterpillar
(-)	Watson and Crick	(-)	Fiddler Beetle
(-)	Jenny Graves	(-)	
(Set price: \$2.50)		(Set price: \$7.50)	
8 July 2003	Rainforests	3 October 2003	Rugby World Cup
Maximum cards		Maximum cards	
(-)	Orange-thighed Tree Frog	(-)	Webb Ellis Cup
(-)	Yellow-bellied Sunbird	(-)	Passing
(-)	Green-spotted Triangle Butterfly	(-)	Goal Kick
(-)	Striped Possum	(Set price: \$5.50)	
(Set price: \$5.00)			
		Private Order Envelopes	
8 July 2003	Murray River Shipping	July? 2003	Torres Strait Island Art
Maximum cards		(-)	Crocodile Dance Headress
(-)	PS Oscar W		Note: Window envelope for National Photos.
(-)	PS Marion		
(-)	PS Ruby		
(-)	PS Pyap		
(-)	PS Adelaide		
(Set price: \$6.25)			

NEW ZEALAND PICTORIAL DATESTAMP SERVICE POSTCARDS

Ian McMahon

In 1976, the New Zealand Post Office decided to issue special postcards as part of their 'Pictorial Datestamp Service'. This service provided collectors of pictorial postmarks with impressions of temporary and commemorative postmarks on special postcards which were pre-printed with a stamp which included the fee charged for the service. Postmark collectors could have a standing order for such postmarks with examples supplied on these cards.

The first card was a 25c brown Queen Elizabeth II card (Figure 1). The card was originally made available only as part of the postmark service and not sold mint. This policy was later changed so that a small number of mint cards were sold to stationery collectors. The card included the description 'Pictorial Date-Stamp Service' and a cachet depicting a Kiwi and a map of New Zealand.

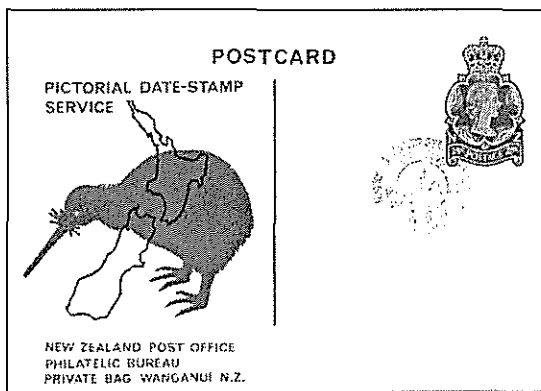


Figure 1

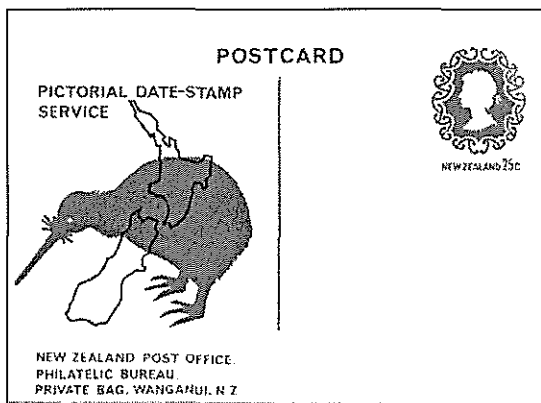


Figure 2

New Zealand was one of the first countries to change its stamp designs from a monarch's profile to pictorial representation of the country's profile. Since the first pictorial stamps appeared in 1898, stamp designs have shown our scenic beauty, Maori culture, plant and bird life, geothermal wonders, sports activities, prominent citizens, historical scenes, modern industries and even a famous race horse. In fact, a study of New Zealand stamps reveals the character of New Zealand. Although a relatively young country, New Zealand has issued many interesting stamps, illustrating a wide range of the country's life and progress.

The definitive series of the 1950's featured the Queen. This was replaced in 1980 with a pictorial issue showing tourist attractions, native flowers, industry and Maori culture. The 1970/71 definitive issue featured butterflies, moths, fish, Maori Artifacts and National Parks. The current definitive stamp issue features roses, Her Majesty the Queen, Maori portraits and sea shells.

Health stamps have been issued annually since 1929, a surcharge being used to assist in the upkeep of children's health camps. Designs for health stamps usually feature children's activities but a series showing native birds was also issued.

A popular innovation was the introduction of Christmas stamps. First issued in 1960, the stamps depicted the paintings of Old Masters. Originally Christmas issues consisted of one stamp but in 1970 three values appeared, one featuring an Old Master, another, an historic church or a stained glass window and the third, a Christmas design. This approach has proved very successful.

In 1966 plans were finalised for the first industrial exhibition on an international scale to be held in New Zealand.

The organisers considered that the issue of special stamps would serve to advertise and to commemorate the exhibition and this was approved. Special occasions and important events in our history can be traced through a study of our stamps.

Centennials have been marked in this way, including provincial, parliamentary, communications, railway and the country itself, (in 1940). Important anniversaries or milestones in our progress have also featured on commemorative stamps.

The New Zealand Government Life Insurance Office uses distinctive stamps featuring lighthouses. First printed in 1891, the same design was used until 1947 when a new lighthouse series was printed. The design was changed again in 1968, with the lighthouse theme still retained.

The New Zealand Post Office's policy of issuing stamps with variety of subject, and style, combined with colourful presentation has contributed to the high standard of New Zealand stamps in the philatelic world.

NEW ZEALAND STAMPS ARE WORTH COLLECTING
TELL YOUR FRIENDS

Figure 3

In 1977 the original card was replaced with a new design, again 25c brown Queen Elizabeth II. This card was replaced in 1978 with a card with a smaller stamp of similar design (Figure 2). The backs of the cards had a printed promotional message about New Zealand stamps (Figure 3).

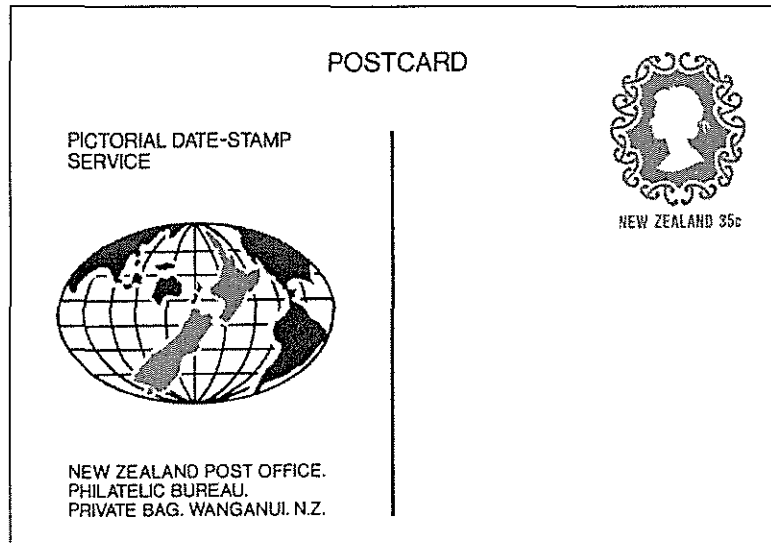


Figure 4

From 1 April 1981 the fee for the datestamp service increased to 35c and a new card was issued with a 35c carmine stamp and a cachet depicting a stylized map (Figure 4).

On 15 December 1982, a redesigned card was issued with a new globe and map of New Zealand. The card now bore the logo of New Zealand Post Philatelic and bore a 35c imprinted stamp.

Following postal rate increases in 1985 a 40c blue card was issued with a redesigned stamp imprint. This was followed in 1986 and 1987 by 45c and 55c blue cards reflecting further postal rate increases (Figure 5).

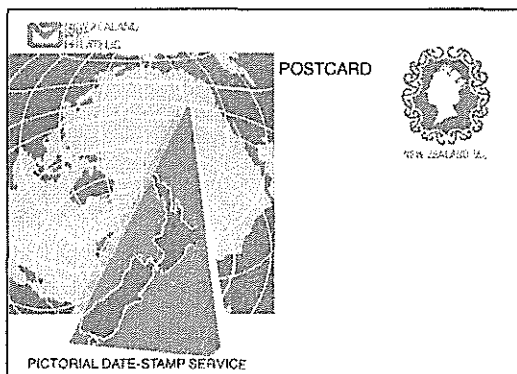


Figure 5

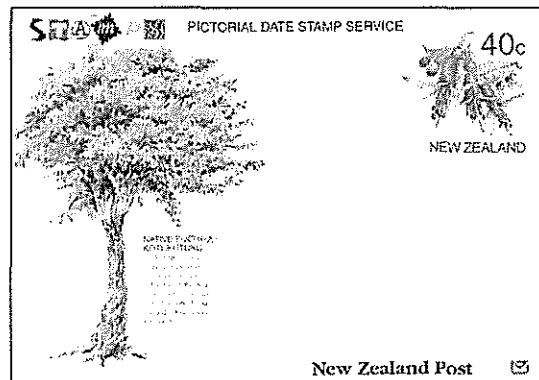


Figure 6

A new postcard was issued on 1 June 1990 depicting the fuchsia flower. The 55c stamp covered the 40c postal rate and the 15c postmark fee. In August 1991 the 55c card was replaced by a 45c card in a similar design. The value shown represented the postal rate only, with the 15c fee the card sold for 60c. On 30 August 1992 the card issued with the new logo "New Zealand Post stamps and collectibles". The card was further modified on 31 August 1994 with the logo shifted to the top left corner.

On 2 October 1995, a new 40c card was issued as a result of the decrease in postage rates (Figure 6). A new 40c card was issued on 1 January 1999 depicting the Karo Shrub.

LITERATURE

Ian McMahon

FROM OUR CONTEMPORIES

Postal Stationery May/June 2003

Update: UPSS 19th Century Envelopes Catalog

Shoebox and Stationery Forum (U.S. Postal Card 'Wild Hair' Varieties; U.S. S46-1 Postal Card; 'Postal Card', 'Post Card', 'Entire'; U.S. Post Office Penalty Stationery; Arthur Woodward's Death; Railway Theme Stationery; Bulgarian and Other Phonocards; Lack of References in Articles)

An Insider's View of those 'False-Franked' Hugo Cards

U.S. Envelope 'Accidental' Fakes

Literature Reviews (Indonesia Postal Stationery, Japanese occupation 1942-1945, Republic Indonesia 1945-1949; The Postal Stationery of Iran; Hellas 2003; Handbook of Modern Ukrainian Philately; Privatganzsachen Katalog 2002)

Postal Stationery July/August 2003

A 30-Year Challenge

Thailand's WWII Provisional Stationery

Discovery of 1873 Chilean Envelope

A Long Time Ago - Part I

Queensland - A New Discovery

Solving a Goldsmith "Riddle"

U.S. Administration of Cuba Envelopes

Forged British Bechuanaland Newspaper Wrappers

Shoebox and Stationery Forum (Discontinue Listing USA Postal Cards S46-1, S44-12, S44-19, and S45-30?; More on Postal Cards S46-1 and S44-1; UPSS Expertising Service?; USA Envelope Idea; Russian Essay Envelopes; More Editing Needed; Canada Post Discounting; Soviet Use of Russian China Envelope)

Postal Stationery Notes August 2003

Pre-paid Postcards

Cigarette Order Cards

Meteorological Envelopes

Charles Leski Auction 25 June 2003

The "Beston" Fiji Postal Stationery Collection provided some of the auction highlights, demonstrating that important, quality items will always command good prices. With items that had not been presented to the market for some time, some exemplary results were achieved for material that was identified as being exotic, unique and a bit unusual.

- Lot 446, an 1895 1 ½d pale green postal card proof sold for \$2,400, far exceeding the pre-auction estimate of \$1,250.
- Lot 462, an 1895 1 ½d pale crimson reply card proof sold for \$2,800, almost doubling the pre-auction estimate of \$1,500-1,800.
- Lot 486, a 1927 KGV 1 ½d red on buff postal card proof, easily passed the pre-sale estimate of \$1,500-2,000, selling for \$3,200.
- Lot 494, 1892 Halfpenny envelopes sold for \$2,070 against an estimate of \$300-400.
- Lot 518, 1911 1d & 3d registered envelopes sold for \$3,750, dramatically eclipsing the estimate of \$700-800.

Stanley Gibbons Stamp Monthly August 2003

Travelling Light for 70 years: The World's First Airletter Form.

New design for the [UK} Forces Airletter

Die Ganzsache 2/2002, 1/2003

New variation of the German Post stamped envelope

New Issues

Postcards used in Hamburg 1945
Bavarian Formula Postcards

The Postal Stationery of the Commonwealth of Australia by Brian Darke

This catalogue was published in a loose Leaf format in five parts commencing in 1976:

- Postcards
- Lettercards
- Prestamped Envelopes
- Registered Envelopes
- Wrappers

The postcard listing included regular post office issues to 1957 as well as official postcards. PTPO postcards were not included. Details of the pictorial views of the postcards or lettercards were not included. Regular, official and a basic listing of PTPO envelopes were included in the envelope section. It was illustrated in black and white and unpriced. It used its own numbering system but included a concordance between its catalogue numbers, Higgins and Gage, Robson Lowe and the 1977 edition of the Australasian Stamp Catalogue.

While somewhat more accessible than the Higgins and Gage and Robson Lowe listings the Catalogue included little additional information compared with the ASC listing. The absence of prices or rarity ratings was also a serious limitation.

BOOK REVIEW

Il Nuovo Pertile, edited by F Filanci and C Sopracordevole, compact format, Laser Invest edition, published for Veronafil, May 2003.

I believe that the editors of *Il Nuovo Pertile* decided to publish this new edition (the previous one was in 1999) in order to review **all** prices, following the introduction of the Euro, the new European common currency.

I note, in fact, that the other Italian area postal stationery catalogue (published each year) steeply increased prices, and this is particularly evident in the field of publicity postal stationery of the 1920s. Such steep increases will probably lead (or may already be leading) to a fall in demand for these items, although the demand for postal stationery of the Italian area is up in Italy these days.

This edition of *Il Nuovo Pertile* contains only a few new items. I note particularly:

- (a) the listing of postal stationery with privately printed advertisements and then sold at reduced price, which has seen increases in a couple of items; and
- (b) the first date of usage, which has been modified for several issues, following new findings.

The only negative comment that I have to make for the catalogue that is without doubt the best in its field for accuracy of information and for prices, is that the overlapping of images and descriptions in this edition makes it difficult to read. This is particularly the case for people who are not very familiar with Italian postal stationery.

Vittorio Coscia

FROM THE SECRETARY

New member

We welcome as a new member David Wood of Premier Postal Auctions.

Meeting at Newcastle 2003

This is a part National show, and will be held at the Waratah Technology College, Turton Road, Waratah on 3-5 October 2003. The PSSA has a meeting slot from 12 noon to 1pm on Saturday 4 October. This will be primarily an informal affair, an opportunity to get together with other postal stationery collectors, with perhaps a small display. All are welcome to attend, whether they are PSSA members or not.

Exchange of information with UFI (Italia)

Our member Vittorio Coscia advises that a member is currently working on the development of an Internet site for UFI. He also advises about two new publications on Italian postal stationery which have appeared this year:

1. Filanci, F and Sopracordevole, C 'Il Nuovo Pertile', Laser Invest edition, compact, May 2003.
2. Post Italiane, ed. 'La repubblica Italiana' - the catalogue of an event organized by the Chamber of Representatives, part of the Italian Parliament. Chapter 3 illustrates the stamp issues of the period, and postal stationery is included.

Vittorio has written a short review of *Il Nuovo Pertile*, the important Italian postal stationery catalogue, which appears elsewhere in this issue of PSC. Both publications should be available from Vaccari – see the Internet site <http://www.vaccari.it>. This site has an English language section, and accepts online orders with payment by major credit cards. Prices are in euros.

Publicity for PSSA

We sent information packets about the PSSA to three non-member exhibitors in the postal stationery class at Hobart 2003. One new member has joined as a result of this effort.

I mentioned in the May 2003 issue of PSC that Brian Jeffries had agreed to take an information packet to the meeting of European Collectors of Australian Commonwealth, which was held at Tilburg, in the Netherlands, from 29 May to 1 June 2003. Brian reported meeting our member Wim Tukker there. He mentioned possible interest from another attendee, but felt that language was a barrier in the reception of our written material.

Listing of Australian non-denominated and flat rate postal stationery

I donated a copy of the Listing to the Munich Philatelic Library, which has one of the most important philatelic collections in Germany. The Librarian, Robert Binner, writes about the listing as follows: 'Literature on modern stationery is hard to come by and with all the changes in issuing policies, collectors have a hard time to keep up. So this monograph is a most welcome addition to the library'.

Secretary's appeal

During June the hard disk on my computer began to deteriorate, and I had to send the machine to a technician to have a new disk installed. He was unable to transfer any information from the old disk, and I lost quite a lot of useful material, including the PSSA membership database of names, contact information, and email addresses. From paper records I have been able to reconstruct the database, and the labels used for sending out this issue have been created from the new version.

If there are any errors on your address label, or you've had a change of address recently, please advise me as soon as possible. You can send an email to me at jkennett@tpg.com.au, or post the corrected label to me at PO Box 16, Ulmarra NSW 2462 AUSTRALIA.

Email addresses

These are becoming more useful as postal rates rise and for speed in communication. Please notify any changes in email addresses to me at jkennett@tpg.com.au, with a copy to Treasurer John Crowsley at j.crowsley@uq.net.au.

From our Contemporaries

L'Entier Postale No 65 Juin 2003

Some items of interest in this issue:

- Postal communications 1940-1944: outside France and inwards: usage of interzone cards. This deals with cards inwards from the French colonies, including examples sent by airmail. Many of these examples are described as 'very rare'.
- Report on the annual general meeting of ACEP on 15 March 2003. It includes reports from office bearers about the previous years's activities.
- Envelope designs proposed by Albert Barre in 1862 and 1863. It is noted that the first French postal stationery items were issued on 1 June 1878.

L'Intero Postale No 84 Estate [Summer] 2003

In this issue:

- Two unissued postal stationery cards with reduced rate.
- The rate of 1.50 lire – this was applicable in 1945-46.
- Report on stationery exhibited at Mostra della Repubblica Italiana' June 2003.
- A review of the catalogue of this Exhibition.
- Report on the 31st Assembly of UFI-Italia held at Vastofil 30 May – 2 June 2003.

The Informer Vol 67 No 3 July 2003

In this issue:

- * Forged 'OS' overprints on South Australia's first postcards.

LITERATURE

Judy Kennett

Some books reviews that I've sighted recently:

The London Philatelist Vol 112 No 1307 July / August 2003

Denmark's Fri-Correspondence Kort (Business Reply-paid cards) by David A Macdonald. Published by the author, 2003.

The author would like to hear from any collector of these cards who could provide him with any additional information on this area of postal stationery, which has not previously attracted a great deal of interest.

There is also a review of Canadian Election Postal Stationery – Monograph No 5 of the Postal Stationery Society, which was mentioned by Ian McMahon in *PSC* Issue No 34 August 2003.

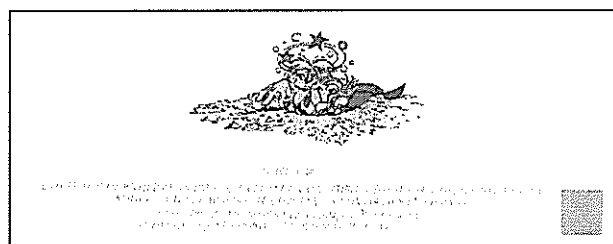
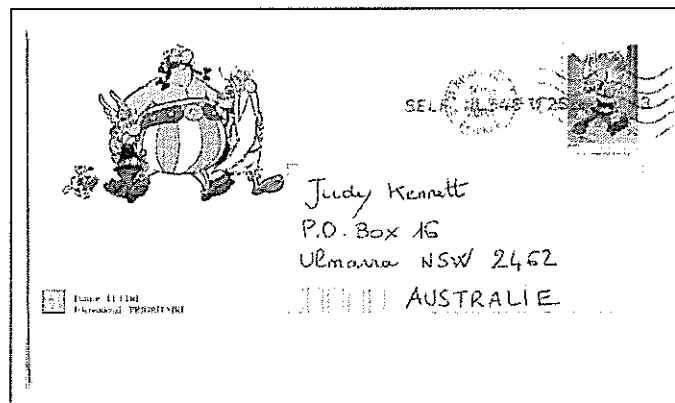
Stamps of Hungary No 154 September 2003

Ungarische Zusatzfrankaturen auf den Korrespondenzkarten 1869 und 1871 (Additional frankings on the Hungarian correspondence cards of 1869 and 1871) by Denes Czirck and Karl Endrody. Privately published 2003.

The reviewer remarks that it seems odd that a whole book could be devoted to this very strange subject. However, he points to the resurgence of interest in the collecting of postal stationery, and to the rise in interest in early classical postal history, for the authors' decision to publish a record of this collection. They enlisted the help of 23 distinguished Hungarian collectors from around the world in gathering it.

Recent stationery from La Poste (France)

This envelope was used by the Vice-President of L'Association des Collectionneurs d'Entiers Postaux (ACEP) to notify a change of mailing address. It measures 22cm x 12cm, and comes with a matching card which depicts characters from the Asterix books involved in their usual activities, chiefly fighting. Great fun.



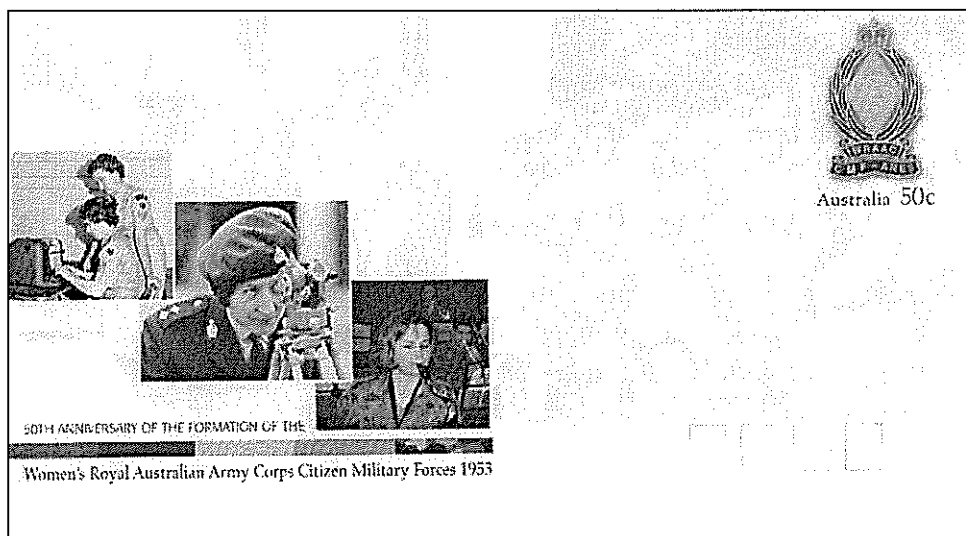
NEW ISSUES

50th Anniversary of the WRAAC CMF PSE

Issued 4 July 2003. Designer: Lynette Taylor Printer: Lithographed by PMP Tasmania.

While the tradition of the Australian Militia or citizen soldier goes back 200 years, history was made in June 1953 when women were first enlisted into Australia's part-time Army, the Citizen Military Forces (CMF). In July 2003 Women's Royal Australian Army Corps (WRAAC) CMF will celebrate its 50th anniversary. Enlistment of women into the part-time army from June 1953 followed government realisation that the small number in the WRAAC regular force would not provide a trained nucleus for quick expansion in time of war. It was assumed that in such a crisis women would take over administration tasks, thereby releasing their male counterparts for combat duties.

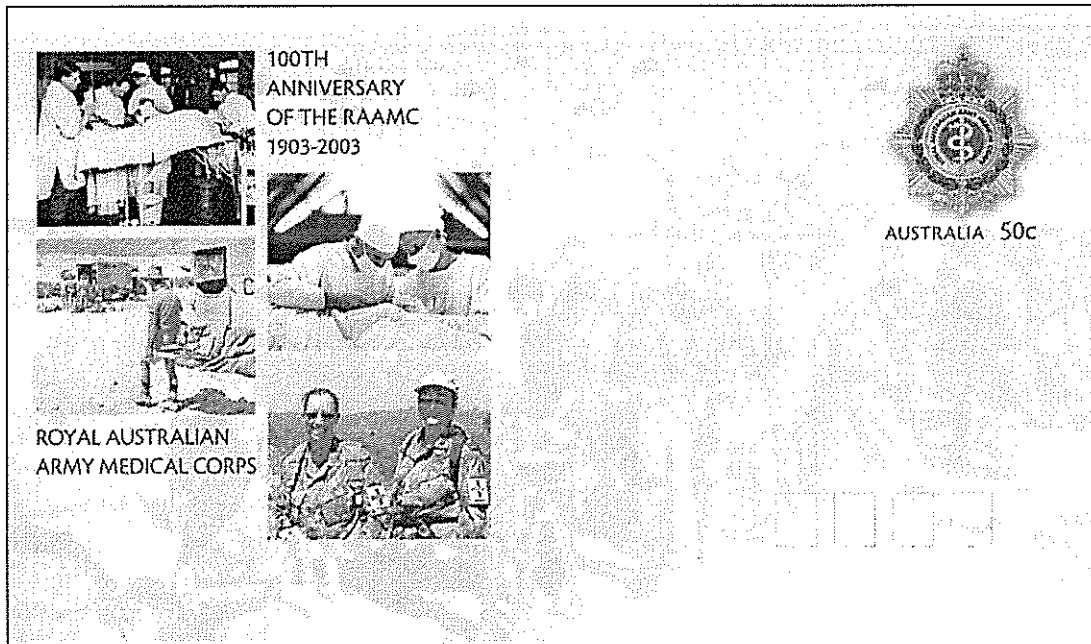
The WRAAC CMF was disbanded in 1976 when females transferred or directly enlisted into male Service Corps Units. The CMF later became the ARES (Army Reserve). The badge of the WRAAC CMF is in the stamp area and images of WRAAC CMF personnel at work throughout the Corp's history are shown in the illustration area.



Centenary of the RAAMC PSE

Issued: 4 July 2003 Printer: Lithographed by PMP Tasmania Designer: Jo Mure

From the turn of the century - through two World Wars and a host of lesser conflicts - the Royal Australian Army Medical Corps (RAAMC) has supported the Australian army. Its heritage encompasses a proud tradition of courage and service to the nation's soldiers. Army personnel working in the RAAMC provide medical and health services to all members of the Army. The role of the RAAMC is to firstly maintain the health of the army in order to ensure it can fight and secondly to deal with casualties. It is also on call to help in emergency situations as they arise and to support troops in peacekeeping assignments. This commemorative PSE marks 100 years since the formation of the RAAMC in 1903. The badge of the RAAMC is in the stamp area and images of RAAMC personnel at work throughout the Corp's history are shown in the illustration area.

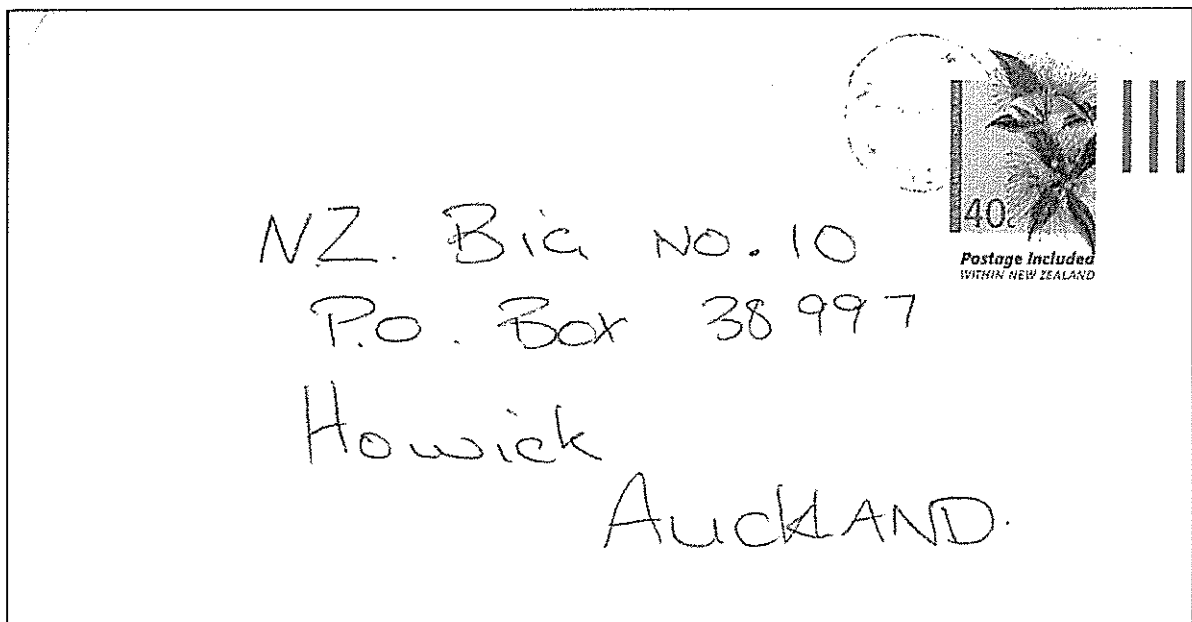


New Zealand

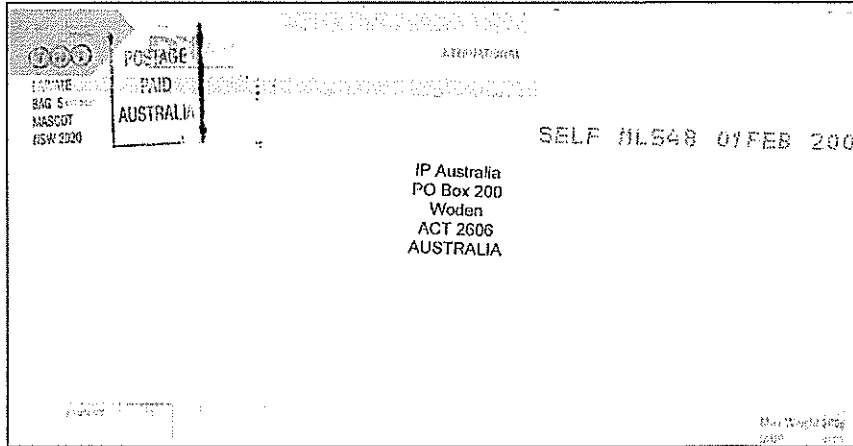
New Zealand has issued two prepaid envelopes for overseas airmail use:

- \$1.50 rate to Australia and South Pacific depicting the New Zealand Poroporo (sold for \$1.70)
- \$2 rate for worldwide use depicting the Kowhai (sold for \$2.20)

Illustrated below, courtesy of David Collyer, is a 40c internal envelope depicting the New Zealand Southern Rata.

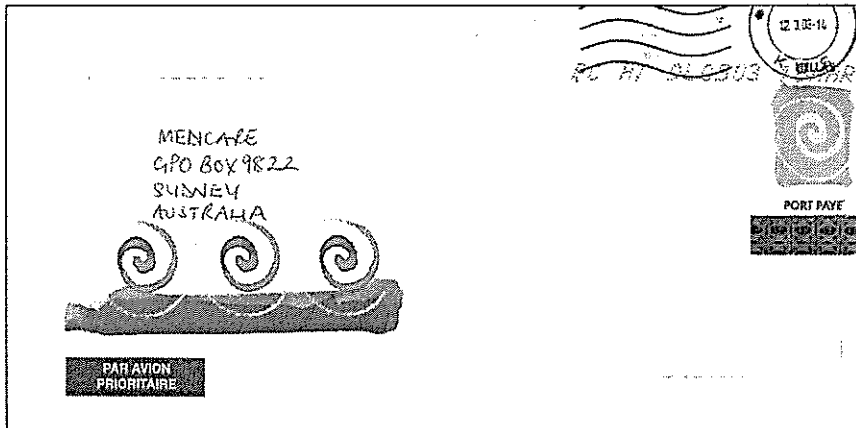


Illustrated below, courtesy of David Collyer is an example of a DX Mail international prepaid envelope for the Australia/South Pacific. The envelope exist in window and non-window varieties.



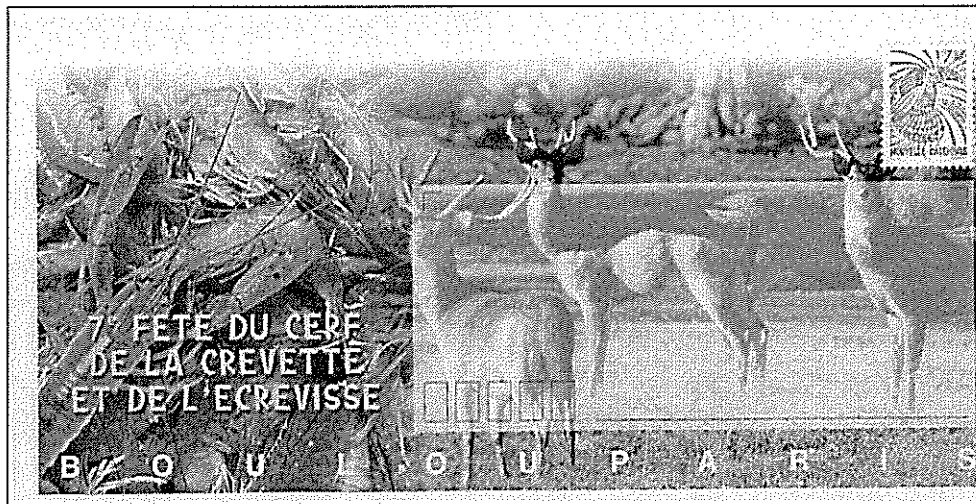
Greece

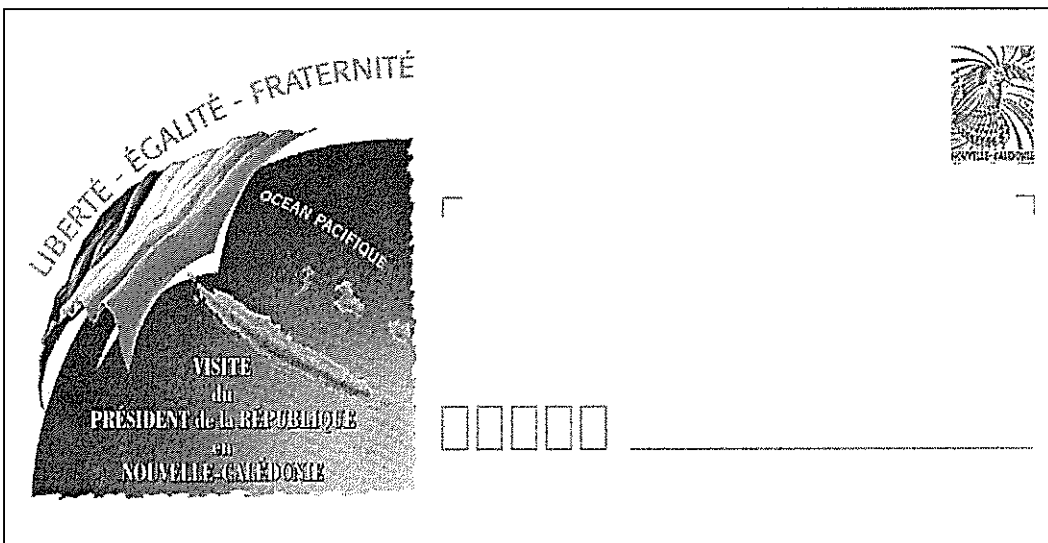
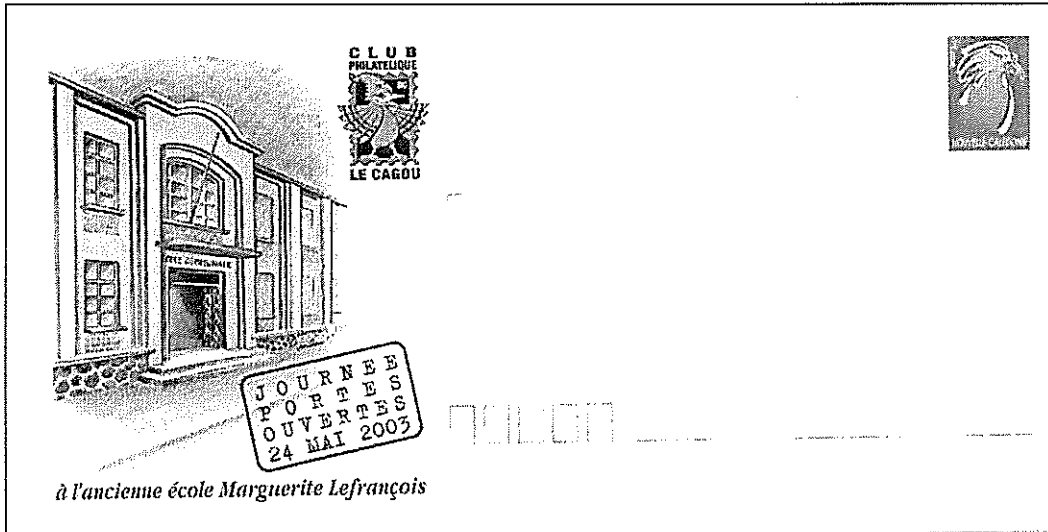
Illustrated below is a Greek pre-paid envelope used to Australia courtesy of David Collyer.



New Caledonia

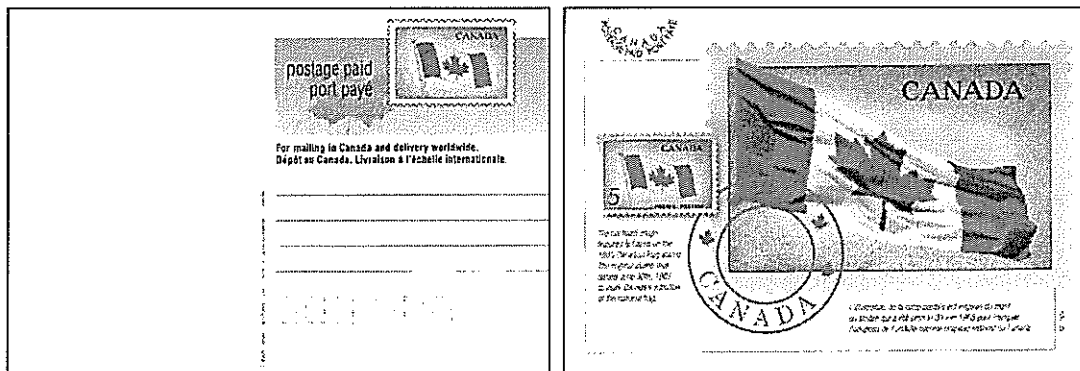
Three new PSEs are illustrated below. One, depicting deers and prawns, another depicting the School Marguerite Lefrancois and the third commemorating the visit of the French President.





Canada

Canada Post continues to add to its range of pictorial pre-paid postcards. One recent card is the Canadian Flag card illustrated below which was only sold in a 'Canada Can' with a Canadian flag and a Tee shirt for \$19.95.



Product	Wt		Price	QTY	Amount \$
Binder and Slipcase	300g	Each	\$15.95		
Stamosafe Box	200g	Each	\$11.80		
Display pages 148gms - low acid bleached ①					
283 x 215mm plain/white	450g	Per 50	\$11.00		
283 x 216mm plain/off white	450g	Per 50	\$11.00		
283 x 216mm feint grille/white	450g	Per 50	\$14.00		
283 x 230mm plain/white	500g	Per 50	\$11.00		
283 x 230mm plain/off white	500g	Per 50	\$11.00		
283 x 230mm feint grille/white	500g	Per 50	\$14.00		
Sheet Protectors - Polypropylene - 60 micron clear					
285 x 225mm - top open	330g	Per 50	\$20.00		
285 x 240mm - top open	350g	Per 50	\$20.00		
290 x 252mm - side open (*see note below)	360g	Per 50	\$22.00		
Sheet Protectors - Mylar					
285 x 225mm - top open	150g	Per 10	\$10.00		
285 x 240mm - top open	200g	Per 10	\$19.00		
Replica Cards - ②③					
Number 35 - Ferdinand Von Mueller		Each	\$5.00		
Number 36 - Australian War Memorial		Each	\$5.00		
Number 37 - Gd Kookaburra		Each	\$5.00		
Number 38 - Centenary of 1st Sth Aust stamp		Each	\$5.00		
Number 39 - 7½d Olympic Torch		Each	\$5.00		
**Number 39 - 7½d Olympic Torch - BLACK PRINT		Each	\$10.00		**No Discount
Number 40 - E2 Kangaroo & Map		Each	\$5.00		
Australia 99 ④					
Navigator Miniature Sheets (2) overprinted		Pair	\$2.95		
First Day Covers of the above		Pair	\$3.80		
Australia 99 Cover carried on the Doepel Ship		Each	\$5.00		
<i>Postage and packaging ⑤</i>					
Total amount enclosed					

Note: This size protector is unsuitable for National and International display frames.
We accept Visa, Mastercard or Bankcard. Orders can be by mail, telephone or over the counter.
For those wanting to pay by cash or cheque, please complete the name and address section only.
For those wanting to pay by credit card, please complete ALL of the following:
Please charge this to my VISA / MASTERCARD / BANKCARD (Circle correct card)
Card Number:


Valid from _____ / _____ until end _____ / _____


Name _____ Postcode _____
Address _____

Cardholder Signature _____

Send all orders to Archival Products, Australian Philatelic Federation
22 Gray Court, Adelaide, SA 5000
Tel./Fax (08) 8212 3557 **PRICES INCLUDE GST**

① Samples of paper available on request.
② Postage and Packaging will be \$1.50. Discount of 25% will apply to clubs and dealers.
③ APF has assumed the cost of GST, also for the Doepel cover.
④ Postage and Packaging will be \$1.50
⑤ Postage & Packing - Please add \$5.00 for 1st kilo and \$2 for each extra kilo or part thereof of using indicated weights.





**WORLD POSTAL
HISTORY**

PRE-ADHESIVES - COVERS
CIVIL - MILITARY CAMPAIGNS - SHIP LETTERS
- MARITIME

**POSTAL STATIONERY
STAMPS**

PROOFS - ESSAYS - SPECIMENS
UNUSUAL AND SPECIALISED MATERIAL

POSTAL AUCTIONS

Malcolm Lacey
P.O. BOX 9, WINCHESTER, SO22 5RF, ENGLAND

Phone: 020 8570 4856 Fax: 020 8572 8239

Voted the Best !

Members of the *Australasian Philatelic Traders' Association* recently cast votes for their Annual Awards for Excellence. *Premier Philately* received the following major awards



- Auction House of the Year
- Auction Catalogue of the Year
- Website of the Year

This recognition by our peers in the industry is most gratifying. However, we are not content to "rest on our laurels". We are committed to continually striving to improve both our auction product, and the level of service we provide to both vendors & bidders.

Thousands of collectors and dealers around the world have already had a taste of *The Premier Difference*.

You can join them by simply filling out the coupon below & mailing it to us today. Or make contact with us by phone fax or e-mail.

We really do strive to live up to our motto: "Results with Integrity".



Gary Watson
Director and Auctioneer



To find out all about us, visit our award-winning website www.premierphilately.com



P H I L A T E L Y

RESULTS WITH INTEGRITY

PREMIER PHILATELY PTY LIMITED • ABN 18 079 350 708
P.O. BOX 126 • BELGRAVE • VICTORIA • 3160 • AUSTRALIA
INTERNET SITE: WWW.PREMIERPHILATELY.COM
EMAIL ADDRESS: INFO@PREMIERPHILATELY.COM
PHONE: +61 3 9754 7666 • FACSIMILE: +61 3 9754 7677

Please send me a FREE copy of your next full colour deluxe public auction catalogue

Name _____

Address _____

My collecting interests are _____

P