

POSTAL STATIONERY

COLLECTOR

Volume 16 No 3: Issue No 63

November 2010



THE POSTAL STATIONERY SOCIETY OF AUSTRALIA

The Postal Stationery Society of Australia has been established to encourage the collecting of postal stationery in Australia and New Zealand and to provide a forum for postal stationery collectors to maintain contact with other stationery collectors and to learn more about their hobby. The Society is not based in any particular city or state and plans to hold meetings at national and state level exhibitions. Subscription rate for 2011 has been set at \$35 (Australia) and \$50 (Overseas excluding New Zealand which is \$40). For further information please contact the Convenor, Secretary or your State Coordinator. Membership enquiries should be addressed to the Secretary.

OFFICE BEARERS:

CONVENOR: Ian McMahon, PO Box 783, Civic Square ACT 2608
SECRETARY Judy Kennett, PO Box 16, Ulmarra NSW 2462.
Email: jkennett@tpg.com.au
TREASURER John Crowsley, PO Box 2296 Keperra Qld 4054 .
Email: j.crowsley@uq.net.au

STATE COORDINATORS

QLD Joan Orr, 7 Mizzen St, Manly West Qld 4179
SA Martin Walker, PO Box 247, Torrensville Plaza, SA 5031
WA Ray Todd, PO Box 158, Dunsborough, WA 6281
NSW Bernie Doherty, PO Box 18, Waratah NSW
TAS Malcolm Groom, 225 Warwick Street, West Hobart Tas
VIC John Sinfield, PO Box 548, Heathmont, Vic 3135.
ACT Ian McMahon, PO Box 783, Civic Square ACT 2608
NZ Norman Banfield, 14 Rata Rd, Raumati Beach Wellington New Zealand

Web page: <http://www.postalstationeryaustralia.com/>

Postal Stationery Collector

Editor: Ian McMahon

Contributions to the Postal Stationery Collector should be sent to Ian McMahon, PO Box 783 Civic Square ACT 2608. Articles on any postal stationery topic are welcomed and, if possible should be submitted electronically. Email the Editor at ian.mcmahon4@bigpond.com for instructions. Illustrations should be good quality scans. Book reviews, news items, information on new issues and members classifieds are also welcome. Letters to the Editor and comments on articles published are encouraged.

COPYRIGHT: The copyright of the contents of the Postal Stationery Collector is held by the Postal Stationery Society of Australia. Items may be reproduced only with the written consent of the Editor.

ISSN 1324-2105

CONTENTS

<i>From the Editor</i>	66
<i>Aerogrammes from the Past (and Where to Find Information about Them)</i> Judy Kennett	68
<i>Queensland Postcards</i> Bernard Beston	70
<i>Australian Post Office Poster of Available Postal Stationery</i> Ian McMahon	72
<i>Destinations of Australian Colonies Wrappers: Commonplace & Scarce</i> John K. Courtis	73
<i>Pacific Pot-Pourri</i>	79
<i>PSSA Forum</i>	81
<i>Listing of Australian Non-Denominated Postal Stationery</i> Ian McMahon	86
<i>From the Secretary</i>	87
<i>Literature</i> Judy Kennett and Ian McMahon	89
<i>New Issues</i>	93

POSTAL STATIONERY COLLECTOR: SALE OF BACK ISSUES

The Postal Stationery Society of Australia has been publishing its journal *Postal Stationery Collector* since May 1995. It is distributed to financial members four times each year, in February, May, August and November. The Society has always maintained a stock of back issues, which are for sale to both members and non-members.

Description

Issues 1- 9 were produced as photocopies in A4 format, with corner staples, and are available only in that form. They are for sale at \$4.00 each, which includes postage in Australia. Airmail postage to overseas countries is an additional charge.

Issues 10 - 45 are available as original copies, in A4 format and saddle stapled, at \$5 each. This includes postage in Australia, but airmail postage to overseas destinations is extra. Current issues No 46 onwards, are available as original copies, in A4 format and saddle stapled, at \$6 each. This includes postage in Australia, but airmail postage to overseas destinations is extra. Reductions will be available on orders of five (5) copies or more.

Payment

Payment is to be made to the Postal Stationery Society of Australia. In Australia, payment can be made either by cheque (made payable to the PSSA) or by credit card (Visa or Mastercard accepted). For overseas buyers, payment is by credit card. Where payment is by credit card, the transaction will be processed by the Queensland Philatelic Council.

Enquiries

Enquiries re price and availability are to be made either by mail to the Secretary at PO Box 16, Ulmarra NSW 2462 AUSTRALIA or enquire by email to jkennett@tpg.com.au

FROM THE EDITOR

London 2010

In the last issue of the PSC I acknowledged the achievements of some of the Australian exhibitors at London 2010. In this issue I would like to acknowledge the outstanding performance of Michael Blinman in obtaining a Gold medal for his exhibit of New South Wales Postal Stationery, Emil Minnaar in obtaining a Gold medal for Postal Stationery of Gibraltar until 1938 and Philip Levine for his Large Vermeil medal for his Gold Coast Postal Stationery.

Bangkok 2010

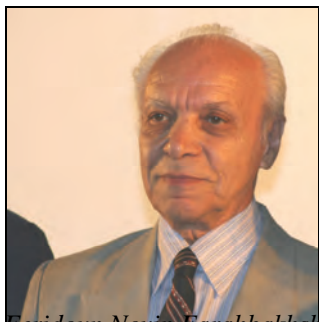
Bangkok 2010, the 25th Asian International Stamp Exhibition, was a FIAP exhibition held at the Queen Sirikit National Convention Centre from 4-12 August 2010.

The exhibition had a small postal stationery class of five exhibits:

Michael Ho	Chinese Taipei	Nicaragua	Large Gold
Feridoun Novin Farahbakhsh	Iran	Iran	Vermeil
Satoshi Komiyama	Japan	Koban Postal Cards	Vermeil
Deepak Manandhar	Nepal	Nepal	Large Silver
Abdul Wahid	UAE	Pakistan: 9 Pie Chughtai Postcard	Large Silver

In addition there was a one-frame stationery exhibit from Michel Roland and three postal stationery entries in the literature class:

Michel Roland	Australia	Lettercards of Belgium 1882-1912	80 points
Huei-Ching Ho	Chinese Taipei	China Postal Insured Letter Envelopes 1910-1949	Vermeil
Pratisad Neurgaonkar	India	Postal Stationery of British India 1856-1947	Silver
Narumi Co	Japan	Postcards of Japan	Vermeil



Feridoun Novin Farahbakhsh



Michael Ho receiving his Large Gold Medal

Portugal 2010

Portugal 2010 was a FIP Exhibition held in Lisbon from 1 - 10 October 2010. Congratulations to the two Australian PSSA members on their Large Gold and Gold awards. Hopefully there will be further details of the exhibition in the next issue of *PSC*.

Postal Stationery of British Guiana	Bernard Beston	Gold
Postal Stationery of Panama to 1940	John Sinfield	Large Gold

FIP Postal Stationery Commission Meeting in Portugal

The FIP Postal Stationery Commission is meeting in conjunction with the FIP exhibition being held in Lisbon from 1-10 October 2010. Revised postal stationery rules are expected to be discussed at the meeting.

Skaneland 2010

The APF has recently commenced an accord agreement with Sweden. The first Swedish national exhibition with Australian participation was *Skaneland 2010*. There was one Australian postal stationery entry:

Jan Gane	The Airletter sheets of Israel 1950-1973	Large Silver [78]
----------	--	-------------------

Adelaide Stampex 2010

Adelaide Stampex 2010 was a modified National Philatelic exhibition held from 20 to 22 August 2010 at the Drill Hall in Adelaide. While there was no postal stationery class, there were two stationery exhibits in the Frugal Class:

Michael Blake	Russian Republic Letter Size Envelopes	Large Silver
Michel Roland	Yesteryear and Today	Large Silver

Vale Allan Berry 28 September 1937 – 3 September 2010.

Alan Berry was a member of the Postal Stationery Society of Australia who was well known to many members who attended philatelic exhibitions in Australia, New Zealand and overseas.

He was born in the United Kingdom and retired to New Zealand with his wife Elizabeth many years ago. As with so many philatelists he first collected stamps as a schoolboy and always with a focus on those of New Zealand. Prior to becoming a New Zealand resident he was a recipient of the prestigious UK Congress medal, editor of *The Kiwi*, the Journal of the New Zealand Philatelic Society of Great Britain and a Fellow of the Royal Philatelic Society of London.



However many will remember him for his contributions to philately after his move to the Land of the Long White Cloud. He was an exhibitor, a national judge, philatelic writer and editor, attendee and helper at virtually every show in New Zealand and national shows in Australia. His personal library was extensive and he was likely a member of more stamp clubs in New Zealand in New Zealand than any other individual. A selection of his achievements included his editorship, from its inception in 1999 to his death, of the New Zealand Judges Journal, his election as an Honorary Life Member of the Royal Philatelic Society of New Zealand and the New Zealand Philatelic Federation Award of Honour. His exhibits included New Zealand Government Life Insurance stamps and New Zealand government Franks. He was also an active Overseas Director of the US-based Society of Australasian Specialists/Oceania.

Allan died in Auckland on 3 September 2010. Jenny Banfield, as a spokesperson for philately at his funeral, spoke of the three loves of his life; his wife Liz who had died a few years earlier, of his family resident in the UK and of philately. His cheery smile and unbounded enthusiasm will be missed at Stamp Shows and meetings in New Zealand and also in Australia. Thank you Allan for your contributions to making our hobby all the more enjoyable.

AEROGRAMMES FROM THE PAST
(And where to find information about them)

Judy Kennett

The used aerogramme at Figure 1 recently came to light in a box of old Australian postal history. It is listed in the Australasian Stamp Catalogue (ASC) as A13 10d, issued on 12 October 1960 to mark the QANTAS 40th anniversary. In ASC 1982 edition it is described as 'QANTAS 40 years of service – Boeing 707 – dark blue on blue. No. issued 2, 050, 020' (Ref. 1). The Higgins & Gage Catalog (H&G) 1984 edition lists the aerogramme as '#13, new stamp design, Fig 75' (Ref. 2).



Figure 1

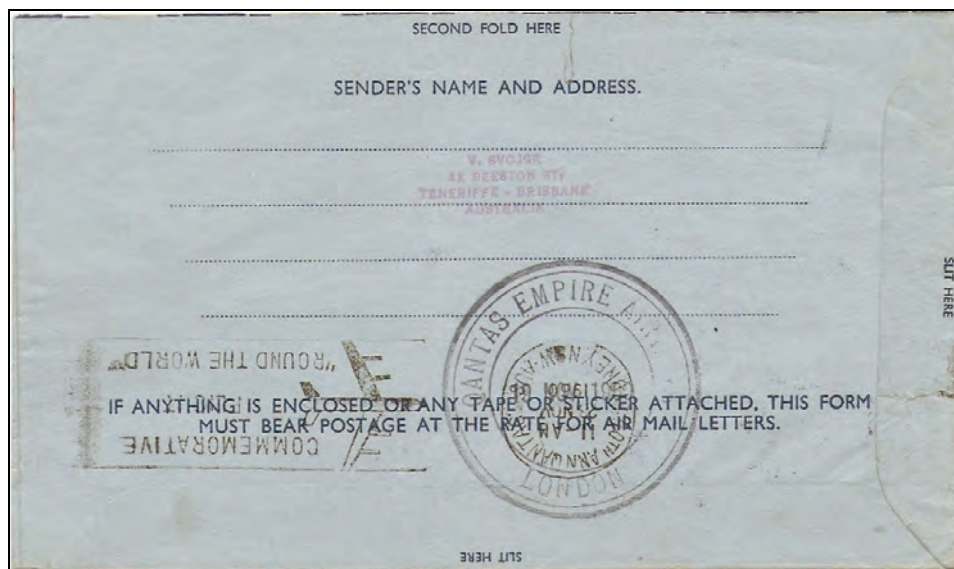


Figure 2

To celebrate 40 years of service a Round the World Flight was organised. The flight began at Winton in Western Queensland where QANTAS had its beginnings. It seems that collectors were invited to send addressed, pre-paid aerogrammes and covers to Winton to be carried on the flight. It was necessary to pay additional 10d for the 'Boomerang' flight, and this collector paid the extra charge with two current 5d adhesives. The commemorative machine cancel is dated 16 Nov 1960, and the cds WINTON / QLD – AUST / 16 NO 60.

Figure 2 shows the back of the aerogramme, with first, a cachet 'QANTAS Empire Airways / London', dated 19 NOV 1960, and second, a Sydney machine cancel for the "Round the World Flight" dated 23 NOV 1960.

Robert Stein writes 'The design of the aerogramme is derived from that of A12. The indicium shows a Boeing 707 jet' (Ref. 3).



Figure 3

Figure 3 shows the front of a second aerogramme that travelled on that flight. This time the additional 10d is paid with a cut-out from an earlier aerogramme, probably ASC A9, which was issued on 2 April 1959 (H&G 1984 edition, page 18)

Later another special 10d aerogramme was issued for the QANTAS 50th anniversary. It is listed in ASC 1982 edition as follows: 'A34 10c, issued on 2 November 1970. No issued 2, 318,100' (Ref. 4) Col Carl Stieg describes it in *The Informer* June 1982 (Ref. 5). Stein describes it thus: 'commemorative aerogramme / special indicium with jet plane / black and fluorescent oranges on azure paper' (Ref. 6)

Keen-eyed readers will have noticed that the descriptions from ASC of the two aerogrammes in Refs 1 and 2 are taken from an old edition of the catalogue. There is more information about aerogramme issues, plus coloured illustrations of the stamp designs, in many old editions. They are worth holding for the extra information and the illustrations in view of the abbreviated descriptions and lack of illustrations in later editions. This applies to all types of Australian postal stationery.

Acknowledgements

Thanks to Derek Brennan, who provided copies of the literature sources, and to Allan Gory for a scan of Figure 3.

References

1. *The Australasian Stamp Catalogue Volume 1: Australia and Territories to November 2005*, 30th edition, Seven Seas Stamps Pty Limited, Brookvale NSW, 2005, page 211.
2. *Higgins & Gage World Postal Stationery Catalog: Australasia*, Classic Philatelics, Huntington Beach, CA, 1984, Australia section page 19.
3. Stein, Robert C, *The aerogrammes of Australia and its dependencies 1944-1980*, American Philatelic Society, State College PA, 1981, pages 57 – 60.
4. *The Australasian Stamp Catalogue Volume 1*: as above.
5. Stieg, Carl L, *Australian aerogramme of 1970*, *The Informer*, Vol 46, No 6, Whole No 517, June 1982.
6. Stein, Robert C, as above, pages 102 – 104.

QUEENSLAND POST CARDS

Bernard Beston

A reading of the Status International Auction Catalogue for 26 August 2010 reveals another copy of the SPECIMEN Overprint on the 1880 card that I reported in the last Edition of the *Postal Stationery Collector*. Of course, two swallows do not make a spring but this is some indication that the overprint may not be an aberration. The providence of the catalogue copy would assist the truth of these finds.

The Adelaide National Stamp Exhibition Stampex 10 was a great success and most collectors had an enjoyable time. It was a privilege to entertain fellow members in my new city of residence, especially at the breakfast meeting on the Saturday morning.

On the last day of the Show I rumbled through a well known interstate Dealer's box, filling in time. I then found an intriguing item. A 1910 1d post card [Figure 1] with ADDRESS in an unlisted thin cream unsurfaced stock. This card is mostly found in a thick white surfaced format, and is very common especially used by the Queensland National Bank to Abbotsford, Victoria [Figure 2]. It was not recorded by Collas who stated that these cards were printed on white or greyish-white stock. The similar 1910 card without the word ADDRESS [Fig 3.] is generally found in a cream stock [stated by Collas to be on a white or off white stock]. So I suggest that you have a look at your cards and see what you have.



Figure 1 1910 Card with ADDRESS in thin cream unsurfaced stock

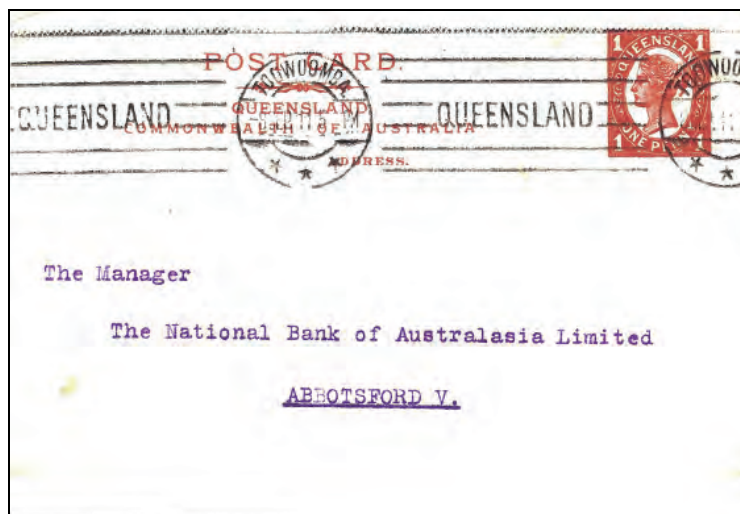


Figure 2 1910 card with ADDRESS sent by Queensland National Bank to Abbotsford.

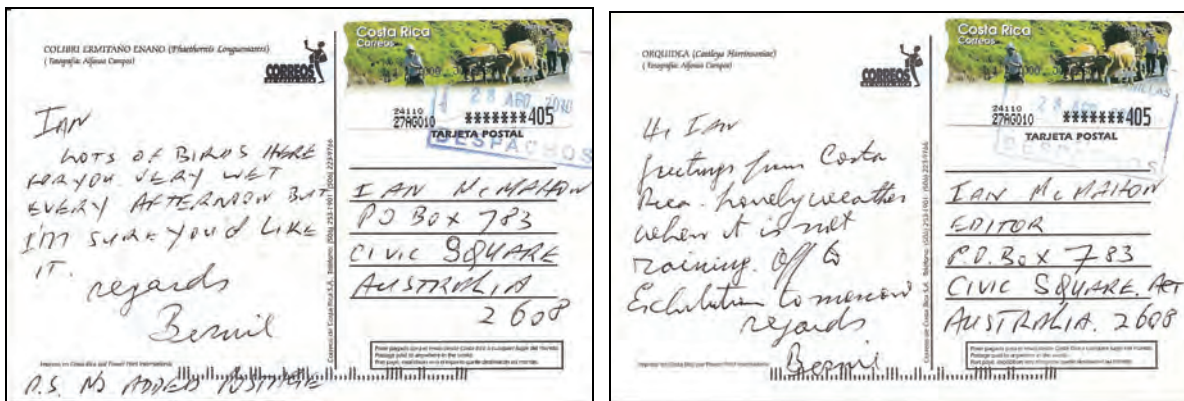


Figure 3 1910 Card without ADDRESS in a paler cream stock

On the Monday after Stampex concluded I was off to Costa Rica as a guest of the Federación Inter-Americana de Filatelia (FIAF) for its Congress. I was accompanied by Tay Peng Hian, a FIP Board Director and currently a Candidate for FIP President. We were warmly received by the Delegates. I also attended.

Costa Rica Post Office had only 4 prepaid post cards for sale. They have a face value of 150 Costa Rican dollars which works out at about Aus 33 cents each; being Air Mail post paid to any destination worldwide. And an International Reply Coupon.

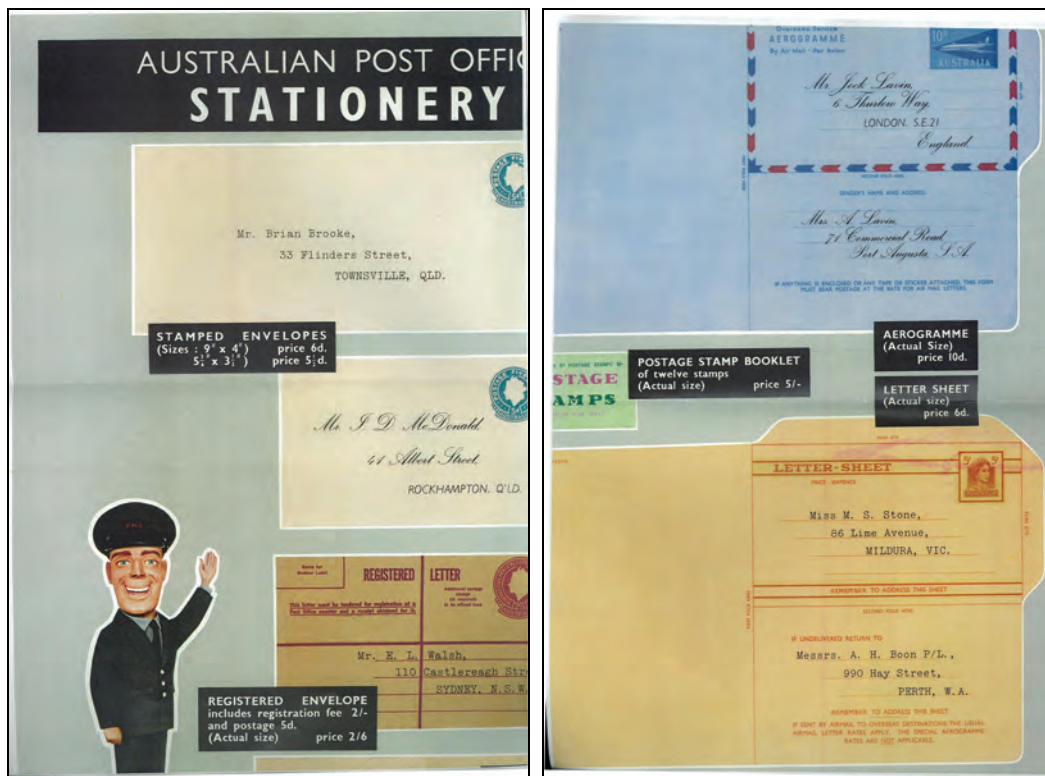
Except at the airport, the Country has no Post Boxes, as these were removed 20 years ago because of continued vandalism. The Exhibition was of high standard, and included exhibits of Central American Postal Stationery.



AUSTRALIAN POST OFFICE POSTER OF AVAILABLE POSTAL STATIONERY

Ian McMahon

In 1965 the Post Office produced an A0 poster of the postal stationery currently available for sale. The poster included illustrations of the 5d light blue stamped envelopes, in standard and long sizes, the 2/5 registered envelope, 5d lettersheet and 10d aerogramme as well as other stationery. All of the items were illustrated neatly addressed and the selling prices of the items were also included. The stamped envelopes illustrated were replaced by 5d red envelopes in about July 1965 while the registered envelope appears to be the 2/5 envelope issued in 1962.



Australian Post Office stationery - Aerogrammes, envelopes etc NAA C3960/1.



VICTORIAN LETTERCARD

Further to Bernie Beston's article in the August issue of PSC, Dave Elsmore has provided another example of the 1889 lettercard used outside of Melbourne, in this case from Ballarat.

**DESTINATIONS OF AUSTRALIAN COLONIES WRAPPERS:
COMMONPLACE & SCARCE**

(Part 1)

Dr John K. Curtis, acapjajc@cityu.edu.hk

A friend who I had not seen for 14 years visited Hong Kong some time back and we had the chance to catch-up over a meal. Kevin was Professor of Urban Planning at an Australian university and has a strong interest in Australian history and geography. During the course of our chatting I was explaining my avocation regarding newspaper wrappers and how I coded them by issuing country and catalogue number. He said he would be interested in seeing whether any insights on the linkages between regions and cities across the globe could be gleaned from a re-coding of wrappers by destination. He explained, "It is common to talk of "globalisation" as a recent phenomenon, but global connections have been a significant part of the lives of many communities over centuries; and mail was one of the main means of that connectivity". I filed that suggestion away for more thought. In the meantime I noted a short commentary in the Feb. 2010 issue of *The London Philatelist* about International Mail and the presentation of "a remarkably diverse display of destination mail" of items passing through Trieste. The presentation showed how Trieste was a major "gateway city" in this era. And finally, the inclusion of postal history or postal stationery material depicting unusual or scarce destinations is one aspect of competitive exhibiting. These three influences gelled into the present analysis of the destinations of 895 Australian Colonies post office wrappers, the images of almost all having been collected from the internet site eBay over the seven year period February 2003 to January 2010.

Each wrapper, arranged by H&G "E" catalogue type per colony, and bearing a readable mailing destination was first coded onto an Excel spreadsheet. This data was then re-arranged into Tables 2-7 to show the domestic and overseas destinations and their frequency for each type of wrapper per Colony. As in previous analyses of my data, this study is limited to Internet listings of post office wrappers and does not consider those wrappers that have been sold by the traditional auction houses such as Prestige and Robin Linke. Collectors (or dealers) with access to these catalogues are encouraged to expand the analysis to make the findings more comprehensive.

There were 541 domestic destinations and 354 overseas destinations, representing a 60-40 split. This in itself is a significant finding because it shows the fundamental scale of international connectivity between the colonies and the rest of the world at that time. The breakdown of domestic/overseas destinations per colony is summarized in Table 1. This table shows the relative proportion of extant wrappers (as proxied by the Internet). Victoria clearly leads the way with over 40%, with South Australia almost another 30%. These two colonies dominate extant wrappers, whereas the infrequent appearance of Tasmania and Western Australia makes them inherently scarce.

Table 1: Summary of Australian Colonies Domestic/Overseas Destination Proportions

Australian Colony	Domestic	Overseas	Total	% Distribution	% Overseas
New South Wales	40	47	87	10	54
Queensland	99	61	160	18	38
South Australia	146	115	261	29	44
Tasmania	8	14	22	2	64
Victoria	246	117	363	41	32
Western Australia	2	0	2	0	0
Totals	541	354	895	100%	35

Almost two-thirds of wrappers bearing overseas destinations came from Victoria and South Australia. Mark Diserio believes that "the huge development of Victoria after the gold discoveries explains the influx of people and mail back to their home countries" (private correspondence).

New South Wales

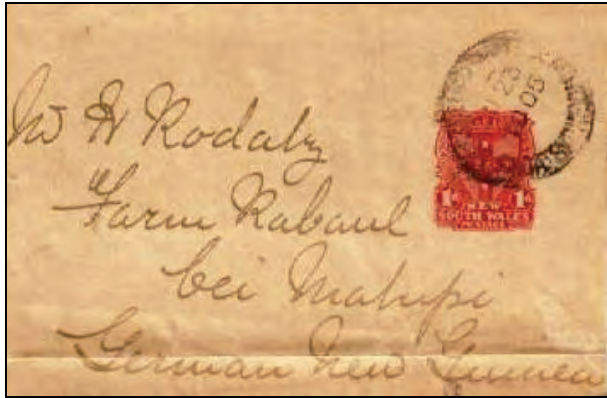
There were 87 readable New South Wales post office wrappers in the database: 40 or 46% bearing destinations within Australia and 47 or 54% with overseas destinations. Commonplace domestic destinations are the four capital cities: Melbourne, Sydney, Brisbane and Adelaide. One especially recurring address from all of the colonies is to Gordon & Gotch, Melbourne (more than 60 wrappers) and this is explained in Courtis (2004a). Overseas destinations are not the only ones that qualify as scarce. Some domestic destinations are scarce too, for example, the suburbs Willoughby and Chatswood, and remote country areas such as Bungendore.

More recognizable as scarce, however, are unusual overseas destinations. After removing the commonplace such as London and Germany, some remain that would undoubtedly qualify as unusual and interesting: Haipur (India), Rabaul (German New Guinea) and Nuku'alofa (Tonga); the latter two are shown by way of example as Figure 1.

The list in Table 2 allows the interested collector to identify destinations that have appeared on each issue of NSW post office wrappers.

Table 2: Summary of New South Wales Wrapper Destinations

H&G	Domestic Destinations	Overseas Destinations	No.
1	Wollongong		1
2		Denver (USA)	1
3		London (2)	2
4	Sydney; Melbourne		2
5		Leipzig (Germany)	1
6	Melbourne (11); Sydney; Brisbane; Broken Hill; Middle Brighton	Berlin (Germany); Suva (Fiji); Herts (England); Leipzig; Portland (Oregon, USA); Haipur (India)	21
7	Melbourne (6); Sydney	Leipzig; Berlin (Germany); Winchester (England); Dunedin (New Zealand)	11
8	Sydney; Adelaide; Brisbane; Bathurst	Leipzig (2); Hamburg (Germany)	7
9		London (2); Leipzig; Washington (DC, USA) (2); New York (USA); Berlin (Germany); Limbach (Germany); Rudolstadt (Germany); Rabaul (German New Guinea)	10
10	Melbourne (2); Sydney; Adelaide; Bendigo; Chatswood; Willoughby; Bungendore; Newcastle	Auckland (2); Berlin (4); Glasgow (Scotland); Singapore; Fiji; Boston (USA); Nuku'alofa (Tonga); Tonga	21
11	Sydney; Balldale (NSW)	Bremen (Germany)	3
12		Dunedin (New Zealand); Berlin; Chicago (USA); Boston (USA); Colorado (USA); Toronto (Canada); Ludwigshafen-am-Rhein (Germany)	7
	40 wrappers (46%)	47 wrappers (54%)	87



E9: German New Guiana



E10: Nuku'alofa, Tonga

Figure 1: Scarce New South Wales Overseas Wrapper Destinations

Queensland

As shown in detail in Table 3, the four capital cities account for 72% of domestic destinations. There is some evidence also of wrappers addressed to country towns: Cunnamulla, Gympie, Tenterfield and Warwick. With regard to overseas destinations, some scarce if not exotic destinations were noted: Dar es Salaam (German East Africa) and Batavia (Java), not to mention Cairo, Northern Tipperah (India) and Agaun (New Guinea). The Dar es Salaam and Cunnamulla destination wrappers are shown in Figure 2. Cunnamulla is especially memorable because Kevin and I once camped there during our Diploma in Education year. The camp fire was so ferocious that a spark landed on the tent and burnt a large hole through the canvas roof. (Kevin reminded me that that was my fault).

Table 3: Summary of Queensland Wrapper Destinations

H&G	Domestic Destinations	Overseas Destinations	No.
1	Melbourne (19); Brisbane (7); Sydney (6); Gympie (4); Adelaide (2); Tasmania (2); Tenterfield; Herberton	London (7); Berlin (2); Washington (DC, USA); Northern Tipperah (India)	53
2	Melbourne (8); Brisbane (4); Sydney (3); Adelaide; Toowoomba; Cunnamulla; Ormiston	London (10); Wellington (New Zealand); Belfast (Ireland); Zurich (Switzerland); Forst (Germany); Agaun (New Guinea)	34
2a	Melbourne; Gympie; Gingin (WA)	Wachenheim (Germany)	4
3	Sydney (4); Melbourne; Warwick (Queensland)	London (3); Berlin (2); Frieburg (Switzerland); Leipzig; Cairo (Egypt); Altmark (Germany)	15
4	Melbourne; Perth	London; New Jersey (USA)	4
5	Melbourne		1
6	Bundaberg (2); Kangaroo Point	Berlin; Liverpool (England); Cairo; Paris; Hessen-Kassel (Germany)	8
7	Sydney		1
8	Sydney (3); Melbourne (2); Hochkirch (Victoria); Brisbane; Perth; Hobart	Berlin (2); Dar es Salaam (German East Africa) (2); London; Paris; Delaware (USA); Kuopio (Finland); Railway Station (Belgium); Stuttgart (Germany); Witzenhausen (Germany); Cassel (Germany)	21
9	Brisbane (3); Sydney (3); Adelaide; Maryborough (2); Newcastle; Bendigo; Hochkirch; Rheinthal (South Australia - not recorded in Campbell)	Batavia (Java) (2); Glasgow; Berlin; Sussex (England); Wigan (England)	19
	99 wrappers (62%)	61 wrappers (38%)	160



E8: Dar es Salaam, German East Africa



E2: Cunnamulla, Queensland

Figure 2: Scarce Queensland Wrapper Destinations



E3: Cachar, India



E3: Cairo, Egypt

Figure 3: Scarce South Australia Overseas Wrapper Destinations

South Australia

South Australia was the only free settler colony in Australia. It attracted a large number of German migrants who brought with them the love and know-how of wine growing. As shown in Table 4, only 56% of wrappers showed a domestic destination. An analysis of overseas destinations reveals a high concentration of wrappers addressed to London and Germany: London 62 or 54% and Germany 31 or 27%. Of the remaining 19%, two scarce destinations are identified: Cairo, Egypt and Cachar, India and these are shown in Figure 3.

Table 4: Summary of South Australia Wrapper Destinations

H&G	Domestic Destinations	Overseas Destinations	No.
1	Melbourne (2)		2
2	Sydney; Bugle Ranges (Sth Aust)	Yorkshire (England); Liverpool (England); Bremen (Germany); Philadelphia (USA)	6
3	Melbourne (36); Sydney (11); Adelaide (5); Brisbane; Monarto (4); Kent Town (4); Port Douglas; Fitzroy (Victoria); Bendigo; Preston (Victoria); Norwood (Sth Aust) (2); Wellington (Sth Aust); Largs Bay (Sth Aust); Hochkirch; Gympie (2); Thebarton (Sth Aust); Kyabram (Victoria); Bowden (Sth Aust)	London (53); Bremen (6); Hamelin-on-the-Weser (Germany) (6); Hamburg (3); Berwick-upon-Tweed (England); Wisconsin (USA); Colombo (Ceylon); Cairo (2); Paris; New York; Buenos Aires (Argentina); Stockholm (Sweden); Liepzig; Hanover (Germany); Baden-Baden (Germany) (2); Schleswig (Germany); [Bad Homburg vor der Hohe (Germany); Wiesbaden (Germany); Alfeld a/d L[eine], (Germany); Frieberg am Neckar (Germany); Bohemia (Austria); Prussia; Cachar (India)	164
3B	Adelaide (11); Monarto (7); Melbourne (3); Sydney; North Terrace; Burra (Sth Aust); Port Lincoln (Sth Aust); Baroota (Sth Aust); Leighton (Sth Aust); Port Wakefield (Sth Aust); Kooringa (Sth Aust); Nuriootpa (Sth Aust) (2); Echunga (Riggs Hat) (Sth Aust); Friedrichswalde (Sth Aust)	London (3); Berlin; Mauritius	38
4	Melbourne; Monarto (4); North Adelaide; Murray River (Sth Aust)	London; Vienna (Austria); Singapore (Straits Settlements)	10
4A	Wellington (Sth Aust) (2)		2
4B	Port Wakefield; Monarto		2
5	Adelaide; Melbourne; Wellington (3); Nundah (Queensland)	Berlin; Whanganui (New Zealand); [La] Chaux-de-Fonds (Switzerland)	9
6	Melbourne; Wellington (2); Tanunda (Sth Aust); Blayney (NSW); Laura (Qld)		6
7	Adelaide; Sydney; Melbourne; Wellington (3)	London (3); Berlin (2); Glasgow	12
7B	Mannum (Sth Aust)	Hamburg	2
8		Whangarei (New Zealand) (2); Berlin	3
9	Sydney; Monarto (2)	Whangarei	4
10	Monarto		1
	146 wrappers (56%)	115 wrappers (44%)	261

Tasmania

Only 22 wrappers have been listed for sale on eBay and other Internet sites in the seven years of data collection. Because of their relative scarcity, the post office wrappers of this colony may appear in the catalogues of philatelic auction houses, or are sold directly by dealers to collectors with an interest in Tasmania. Mark Diserio suggests that "up to a certain time, wrappers were sent locally at no charge. Tasmania may have been one of these, thereby explaining the scarcity of wrappers used locally". However, of those in the database, eight were sent to Australian destinations outside

Tasmania. The high incidence of extant wrappers bearing a Broken Hill address is an opportunity to explain how these small concentrations crop up from time to time.

Batches of wrappers addressed to a specific company, a reverend, a mission, a professor, a banker, a pastoralist, or some other particular person have been noted. The question is why do these clusters or concentrations appear for sale, literally trickled onto the market over several years? For named individuals these wrappers arise when deceased estates are cleaned out, and philatelic collections are sold to dealers, or in some cases disposed of by a relative with knowledge of the operations of eBay. Sometimes they arise from a cleaning out of document files of schools, libraries, institutions or companies to make needed space available. This is the most likely explanation why so many Gordon & Gotch designated wrappers have appeared on the market (Courtis, 2004a).

Table 5: Summary of Tasmania Wrapper Destinations

H&G	Domestic Destinations	Overseas Destinations	No.
1		London	1
2		London	1
4	Broken Hill (NSW) (4)	London	5
5		London (3); Wellington (New Zealand); Munchin (i.e. Munich) (Germany)	5
KE1	Brisbane (2); Adelaide; Broken Hill		4
KE3		London (2)	2
KE6		London (3); Sandakan (North Borneo)	4
	8 wrappers (36%)	14 wrappers (64%)	22

There was one outstanding exotic overseas destination to Sandakan, North Borneo (Figure 4) which attracted a flurry of interest on eBay, selling for USD179.50 with eight bidders.



KE7 Tasmanian Mail Printed-to-Private-Order

Figure 4: Scarce Tasmanian Wrapper Destination:

References

Courtis, John K. (2004a) Wrappers Signalling Advertising Evidence, *The Collectors' Club Philatelist*, Vol. 83 No. 4, July-August, pp. 221-234.
 Courtis, John K. (2004b), Victorian Newspaper Wrapper Write-up: Melbourne to Ceres 1883, *Postal Stationery Collector*, Vol. 10 No. 3, Issue No. 39, November, pp. 69-74. (Cited in Part II).
 Courtis, John K. (2003), Perfin of Thomas Holloway's Pills and Ointments, *South Pacific Perfin Bulletin*, No. 63 October, pp. 8-12. (Cited in Part II).

My thanks to Kevin O'Connor, Mark Diserio and Allan Gory for their comments on an earlier draft.

(Part 2 will appear in the next issue).

PACIFIC POT POURI

The British Solomon Islands, like many of the islands of the South-West Pacific have made extensive use of formular aerogrammes.

These have been forms issued specifically for the Colony as shown in Figures 1-2 used (philatelically) in 1952 with George VI definitives.



Figure 1



Figure 2

Australian formular aerogrammes issued for use in Australian territories were also used in the Solomons. Figure 3 shows use of the 1954 type in 1957 while Figure 4 shows the 1959 type used in Norfolk Island for comparison with Figures 5, 6 and 7 which show the 1959 type used in the Solomons.



Figure 3



Figure 4



Figure 5



Figure 6



Figure 7



Figure 8

Figure 8 shows a private aerogramme used from the Gilbert and Ellice Islands. Fiji has made extensive use of many private formular aerogrammes including UK, New Zealand and Australian types. Figures 9-13 show a range of Australian types used by the Fijian branches of Australian banks: ANZ (Figures 9, 12), the Bank of New South Wales (Figures 10, 11, 13).



Figure 9



Figure 10



Figure 11



Figure 12

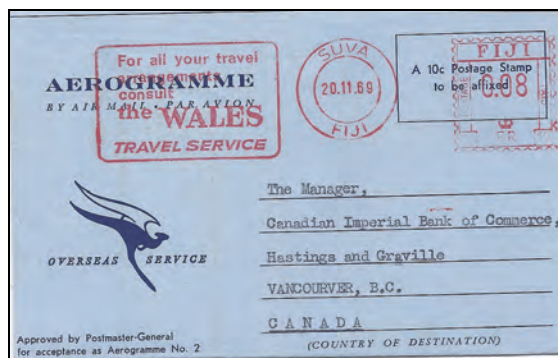


Figure 13

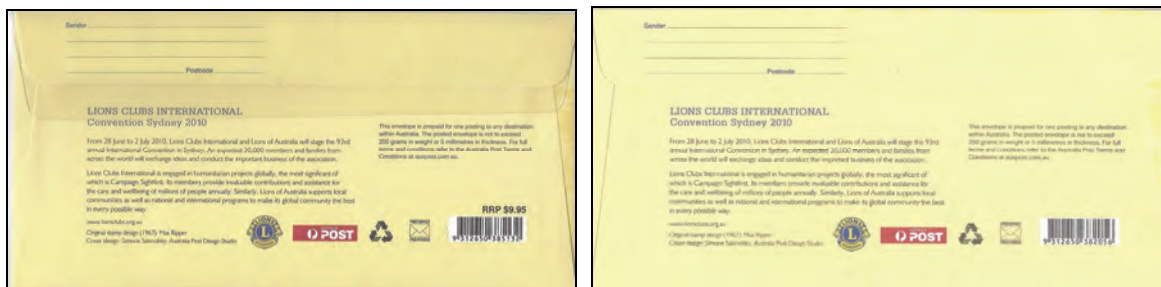
PSSA FORUM

New Issues

Australia Post issued a stamped envelope selling for 70c on 31 August 2010 for the centenary of Girl Guides and another commemorating the opening of the National Service memorial at the Australian War Memorial in Canberra on 8 September 2010.



Further to the mention in the last issue of *PSC* of the 'limited run PSE' with a Lions International Convention Sydney 2010 embroidered badge, this envelope differs from the 'regular' envelope in having a different postcode and the text 'RRP \$9.95' on the reverse. As far as I am aware the envelope is not available mint. The illustration below shows the regular envelope on the right and the 'limited run PSE' on the left.

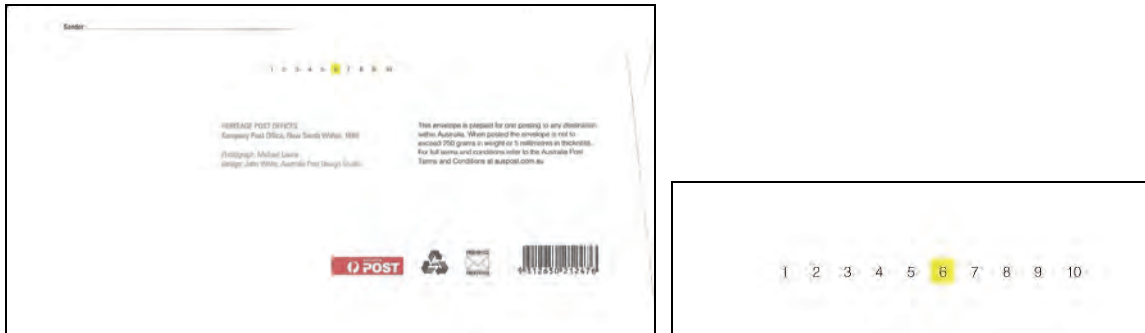


With many of the PSEs now being produced apparently being commissioned by an organization it is worth keeping an eye on any commercially used envelopes as envelopes used by the sponsoring organization may (as was the case for Vision Australia) differ from those sold by the Post Office. In particular watch for barcode differences and feel free to report any differences found to the Editor.

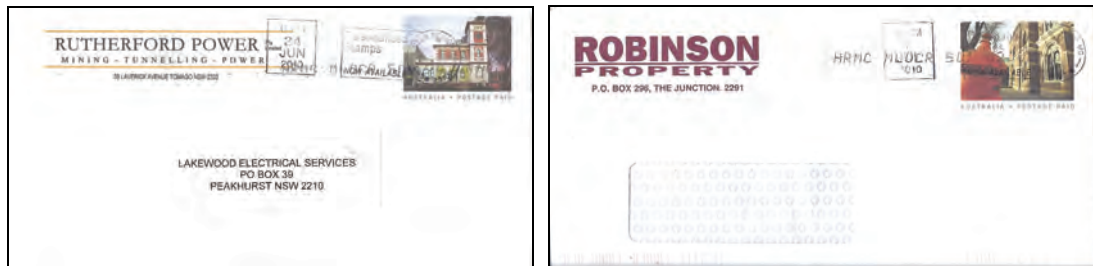
Heritage Post Office PPEs

The current definitive stamped envelopes were issued on 1 October 2009 and depict heritage post office buildings based on photographs by Michael Laurie and John Zanin. Like earlier definitive envelopes, the envelopes have the numbers '1 2 3 4 5 6 7 8 9 10' printed under the flap. With earlier envelopes the first reprint was indicated by the numbers changing to '2 3 4 5 6 7 8 9 10', the second by '3 4 5 6 7 8 9 10' and so on.

For the heritage post office envelopes this arrangement doesn't seem to be the case. Interestingly some of these envelopes have appeared in which one of the numbers under the flap is in a yellow box. For example the DL envelope (Kempsey PO) illustrated below has the '6' in a solid yellow box. The envelopes currently on sale in Canberra show either no yellow box or the '6' (DL, DL Window Flemington PO, C5 Forbes PO) or '7' (Charters Towers C4 envelope) in a yellow box. Does anyone know whether this is meant to indicate reprinting of the envelopes or whether it serves another purpose?

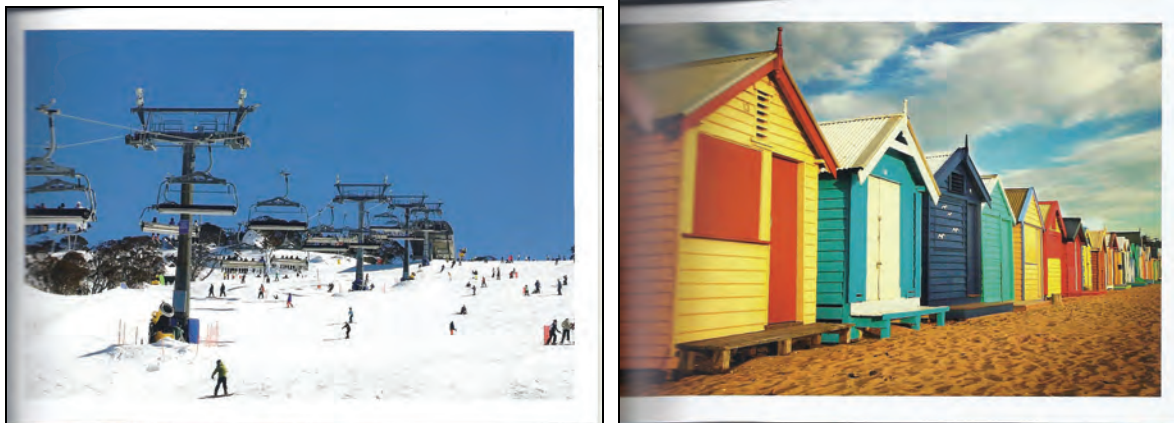


As has been the case for previous issues, Australia Post continues to offer its 'address corner' service whereby company logos and return addresses are printed on the envelope if a minimum number of envelopes are ordered. Two examples are shown below courtesy of David Collyer.



Long Weekend Formular Postcards

The prestige booklet issued on 22 September 2010 contains five formular postcards evoking long-weekend destinations at St Kilda beach, the Glasshouse Mountains, Surfers Point, the Murray River and Thredbo.



Adelaide Postcard

A new postcard was issued to coincide with Adelaide Stampex 2010 showing four Adelaide city scenes: Footbridge over the River Torrens, Paddle boats on the River Torrens with Adelaide Convention Centre in the background, Elder Park Rotunda and Torrens Parade Ground and Drill Hall. Photographs by Richard Venus.



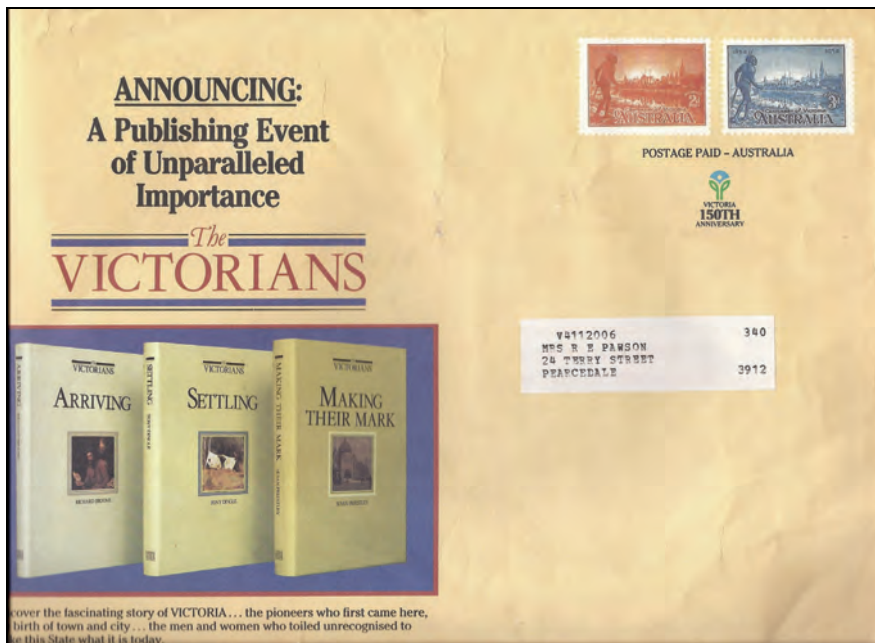
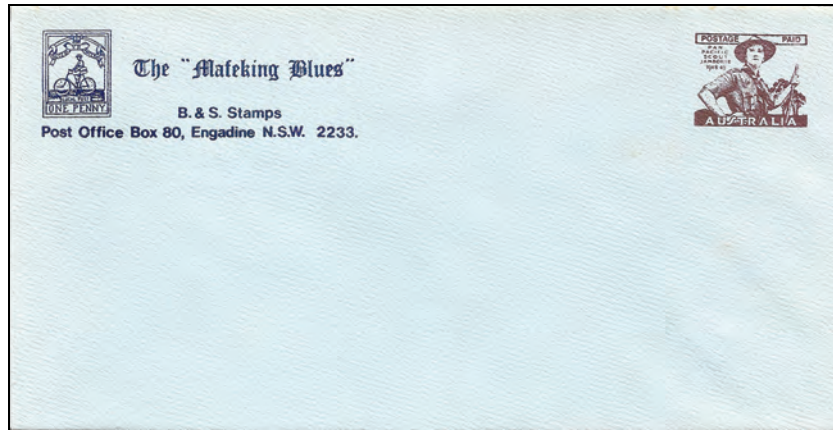
Lions Convention Overprinted Postcards

Four postcards, two showing the Sydney Harbour Bridge, were overprinted by Australia Post for the 93rd Lions Clubs International Convention held in Sydney from 28 June to 2 July 2010. The postcards were available by mail order from the Queen Victoria Building Post Office in Sydney and were mentioned in the Philatelic Bulletin.



Scouting Bulk Mail Imprint

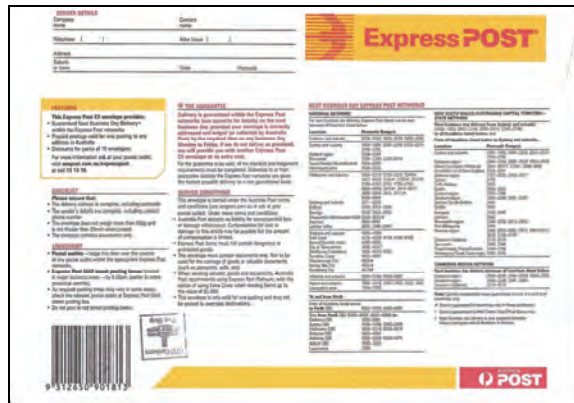
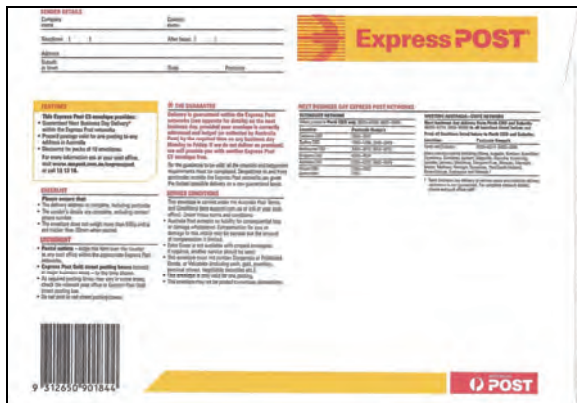
Many bulk mail imprints have a superficial resemblance to the postage paid imprints of modern postal stationery. The imprints, however, indicate payment of bulk postage or on account and the envelopes must be lodged at a post office with the postage paid in cash at the time of lodgment or charged to a company account. Two nice examples of such imprints are the envelope based on the 1948 Australian scout jamboree adhesive stamp and another actually showing the 2d and 3d Victorian Centenary adhesive stamps are illustrated below.



Express Post Envelopes

For many years Express Post envelopes have had a label attached to the front of the envelope with a barcode number prefixed with a letter (or letters) indicating the size of the envelope and usually a second letter indicating the state of issue. For example, C5 envelopes sold in Western Australia had the prefix CW and text specific to the express post service in Western Australia on the reverse. There were also at times envelopes with general (ie not state specific) text on the reverse and these usually had the prefix CG while DL envelopes (which I have only seen with general text) used the prefix DL. (Note that there have been occasional examples of the label and the text on the reverse not matching as well as envelopes sold without the label).

Current envelopes have replaced this system with a barcode number comprised of 12 numerals. This has the disadvantage that it is no longer easy to tell which state the envelope has been produced for from the front of the envelope but it is worth remembering that the reverse of the envelopes (except for the DL envelope) still show state specific text and different barcodes. Thus there continues to be 5-6 different envelopes for each size of the express post envelopes (except the DL envelope) and 500g and 3 kg satchels ie each 'issue' of express post envelopes will have at least 23-27 different envelopes and satchels. The illustrations below show the new and old labels on DL and C5 envelopes and the reverse of C5 envelopes from Western Australia and New South Wales. (ACT uses New South Wales envelopes, Northern Territory uses South Australian envelopes while Tasmania, except for some early issues, uses Victorian envelopes. The DL envelope and the large size 3 kg and 5 kg satchels usually have general text.)



POSTAL STATIONERY SOCIETY OF AUSTRALIA

Online Listing of Australian non-denominated and flat rate postal stationery
Ian McMahon

In its first issue in May 1995, *Postal Stationery Collector (PSC)*, the journal of the Postal Stationery Society of Australia carried the first installment of a listing of Australian non-denominated (postage paid) postal stationery. This included postcards, definitive envelopes (including those for International postage), registered envelopes, Express Post envelopes and satchels, aerogrammes, Courier satchels, and EMS International Courier stationery. Since then there has been an update to the listing in almost every issue of the journal.

This online catalogue on the PSSA website www.postalstationeryaustralia.com brings together the listings from the various issues of the PSC up until the end of 2006. This consolidated listing has been previously published in hard-copy in three versions, in 2002, 2003 and 2007. It is anticipated that the next posting will list issues of non-denominated Australian postal stationery up to the end of 2009.

Enquiries to Secretary: jkennett@tpg.com.au

LISTING OF AUSTRALIAN NON-DENOMINATED POSTAL STATIONERY

Ian McMahon

Postcards

13 July 2010 Emergency Services

Maximum cards
 (-) Police
 (-) Fire
 (-) Ambulance
 (-) Call Service

(Set price: \$5.20)

19 July 2010 For Special Occasions

Maximum cards
 (-) Wedding Bands
 (-) Gown and Roses
 (-) Floral Graphic
 (-) Southern Cross (red)
 (-) Wattle
 (-) Tulips
 (-) Balloons
 (-) Southern Cross (blue)
 (-) Champagne glasses
 (-) Teddy Bear

(Set price: \$14.10)

27 July 2010 Centenary of the Australian Taxation Office

Maximum cards
 (\$1.35) Australian Taxation Office

3 August 2010 Burke and Wills: 150 Years

Maximum cards
 (-) Crossing Australia
 (-) Leaving Melbourne
 (-) Return from Gulf
 (-) Towards Mt Hopeless

(Set price: \$6.60)

20 August 2010 Views of Adelaide

(\$1.60) National Service Monument

31 August 2010 Centenary of Girl Guides

(-) Active Guide
 (-) The Guide Sign
 (-) Olave Baden-Powell

(Set price: \$6.55)

8 September 2010 National Service Monument

Maximum cards
 (\$1.35) National Service Monument

22 September 2010 Long Weekend

Maximum cards
 (-) 1950s
 (-) 1960s
 (-) 1970s
 (-) 1980s
 (-) 1990s

(Set price: \$6.75)

5 October 2010 Long Weekend

Maximum cards
 (-) Common Wombat
 (-) Eastern Grey Kangaroo
 (-) Koala
 (-) Grey-headed Flying Fox
 (-) Southern Boobook Owl
 (-) Ringtail Possum

(Set price: \$8.70)

Note: The set price of the Adored and Loved (Pet Dogs) postcards was increased to \$6.75 due to the increase in the domestic postal rate to 60c.

Envelopes

Note: The Lions Club International Convention 'limited run PSE', mentioned in the August 2010 PSC, differs from the regular envelope in having the text 'RRP \$9.95' and a different barcode on the reverse of the envelope. The envelope was not sold mint.

31 August 2010 Centenary of Girl Guides
 (\$0.70) Domestic

8 September 2010 National Service Monument
 (\$0.70) Domestic

Express Post



August 2010 (?) Envelopes with a bar code with 12 numerals

(\$4.60) DL envelope
 (\$4.60) C5 envelope
 (\$5.90) B4 envelope

Note: The DL envelope has general text on the reverse while the C5 and B4 envelopes have state specific text on the reverse ie there are likely to be at least five different types of each envelope, NSW and WA recorded so far.

November 2010

TREASURER'S REPORT

Finances as at 14 August 2010

Current account:	\$ 4195.77
ETFPOS credit	\$ Nil
Investment	\$14412.66
Total	\$18608.43

John Crowsley. Hon. Treasurer

FROM THE SECRETARY

New members

We welcome two new members:

Peter Williamson (NSW) whose interests are Australian pre-stamped envelopes, postage paid envelopes, and private and official overprints on aerogrammes.

Mark Lewis (Victoria) whose interests are Western Australian and Victorian postcards, postcards of the German Third Reich, and Australian pre-decimal maxicards.

Meeting of the PSSA at Adelaide Stampex 2010

Ian McMahon attended. In this issue is a gallery of photographs of members attending the breakfast, and a short report on the meeting.

Meeting of the PSSA at Mandurah 2010

Mandurah 2010, which includes National One-Frame, Australasian Challenge and Postcards will be held at Mandurah Performing Arts Centre, Mandurah WA from 19-21 November 2010. The Society will be meeting at the show on Sunday 21 November, from 12.30 – 2pm. The programme for the meeting has not been settled, but will be advised in a later email notice to members.

Australasian Stamp Catalogue (ASC) 31st edition

The Seven Seas Stamps website is announcing the publication of Volume 1(31st edition) of the catalogue in late September – early October 2010. Volume 1 contains: 'Australia, AAT, Christmas and Cocos (Keeling) Islands, stamps, FDCs, packs, year books, plus the postal stationery of these areas to June 2010'. Pre-publication orders can be placed on the website at www.sevenseas.com.au . The price advertised is \$49.50.

Sale of back issues of Postal Stationery Collector

A price list for back issues of the journal appears elsewhere in this issue. It also appears on the Society website www.postalstationeryaustralia.com . We still hold spare copies of most previous issues, and enquiries to the Secretary about availability are most welcome.

PSSA Meeting in conjunction with Adelaide Stampshow 2010

Martin Walker, the South Australian Coordinator of PSSA, arranged a shared informal breakfast meeting for PSSA members and members of the Cinderella Society at Pellegrini's Cafe, 179 O'Connell St, North Adelaide on Saturday 21 August from 8am to 9.30am. The meeting was well

attended by members of both Societies with close to 20 people present.

Displays included John Walker's collection of momentos including cinderellas and covers of the 1935 Postal Stationery exhibition and Martin Walker's collection of South Australian postal notes. Martin also commented on progress with the catalogue of South Australian postal notes that he is preparing.



Martin Walker addressing the meeting



Wilson Ilberry



Examining the exhibits

Request for Assistance: Horses on Postal Stationery

I'm not a member of PSSA, but may be you can help me in any case. I collect postage stamps and other philatelic items including postal stationery depicting horses and horse symbols. Also I am working on an on-line catalogue on this theme see <http://www.horse-stamps.narod.ru>. It is a non commercial project.

This week I finished work on the Australian section:

<http://www.horse-stamps.narod.ru/country/austral-en.htm>

<http://www.horse-stamps.narod.ru/covers/kom-en.htm>

<http://www.horse-stamps.narod.ru/covers/aerogr-en.htm>

stamps

Pre-Stamped Envelopes

Aerogrammes

I try to include not only illustrations but detailed descriptions and information about the philatelic items. But I don't have enough information on the Australian postal stationery.

November 2010

I hope you can provide me with the missing information about the issues including printers, date of issues, printing quantity, cover's size, catalogue numbers etc.

I shall be grateful for any information about Australian postal stationery that I missing on my site.

Sorry for the long letter. I am just trying to make a useful and informative topical resource with information on as wide a range of philatelic material from different countries as possible.

Best Regards,

Nadya (Moscow, Russia) horse-stamps@mail.ru

LITERATURE

Judy Kennett and Ian McMahon

From our contemporaries

The Postal Stationery Society Journal [UK] Vol 18 No 3 August 2010

- Meeting report – Sunday 9th May 2010 (included displays of postal stationery of Chile by Ross Towle and the introduction of embossed postal stationery by Michael Lockton)
- Stamp dealers' mail
- G B postal stationery news
- Illustrated and advertising postal stationery in the period up to the First World War – QV postcards
- 60th anniversary of the first Israeli aerogramme

Sydney Views August 2010

- NSW Registered Envelopes: De La Rue size G envelopes
- Some notes on Queensland Registered Envelopes

Gibbon Stamp Monthly August 2010

- Foreign Postal Stationery P-Z

Gibbon Stamp Monthly September 2010

- Postal Stationery Matters (South Africa, London 2010, Australian states pepaid telegram forms)

Bulletin of the Australian Commonwealth Collector's Club June 2010

- Registered Post Envelopes and Labels – An Update

Postal Stationery September - October 2010

- The Ringer - A Nepal Card
- U.S.A. 19th Century Column
- U.S.A. 20th/21st Century Column
- U.S.A. Postal Stationery New Issues
- USA "Cancelled" Postal Cards
- Another "Troy Bilt" Card
- Pseudo, Watercolor and Mourning Questions
- Expertizing of USA Stationery
- Hong Kong Postal Money Orders
- USA Private Precancelled Cards
- British Post Offices in French Morocco
- Cuba S2 with Missing Grommet
- Uruguay Official Envelopes
- More on Paper Folds
- India Used Telegraph Form
- Mexico Stationery Catalog
- Chinese Stationery Market
- North Korea Stationery
- FIP Postal Stationery Commission

- New ERP for USA Card S28f Type I Four-Arcs
- Reprint Request Cards, Robert Bell
- Selected British Forces Aerograms from the Thomas A. Matthews Collection, Part 11

Reviews

London Philatelist Vol 119 No 1377, July-August 2010, page 230.

China: Junk indicia postal cards (1914-1936) by Huei-Ching Hoo, published 2010 by Philatelic Writers' Club, 226p, Ill, price and availability from the publisher, PO Box 5-357, Taipei, 100 Taiwan. The 11 chapters of this book provide a very exhaustive treatment of these cards covering all the issues and variations, all illustrated in full colour; although the text is in Chinese, each chapter is prefaced with an excellent abstract in English.

London Philatelist Vol 119 No 1378, September 2010, pages 278 and 279.

Catalogue mondial des coupons-reponse, Tome 1, Histoire, types, generalites ... Pays de 'Acores a Hongrie [World postal reply coupons catalogue, Volume 1, history, types, general points ... Countries from the Azores to Hungary] by Andre Hurtre, published 2010 by Academie de Philatelie, France. Soft bound, 662p, ill, price 55 Euros + p&p 9 Euros. Available from the publisher, email brigitte.abensur@wanadoo.fr.

This is the first of two volumes bringing together all the International Reply coupons of the world. There is a very detailed account of the various types, followed by a listing of the countries, with dates of issue and some indications of scarcity. Written in French, it has translation tables and indexes. Volume 2 should be out in 2011.

Rodrigo's catalogue of Ceylon / Sri Lanka postal stationery, Part II – postal cards, letter cards, letter sheets, wrappers and PTPO wrappers by Dr Rodrigo Chandra, soft bound, 224 pages, colour ill, price 40 Pounds + p&p 5 Pounds, available from the publisher, email: rodrigo@hkucc.hku.hk.

This is the second part of a projected three-part catalogue. Dr Alan Huggins comments, among other points, on the range of material, including local overprints and surcharges on various items of postal stationery, covered in this book, especially the information in the listing of Sri Lankan material. He sums it up by stating that 'Dr Rodrigo is to be congratulated on the work he has put into producing such a comprehensive guide to the subject, which is excellent value for money and will certainly stimulate greater collector interest'.

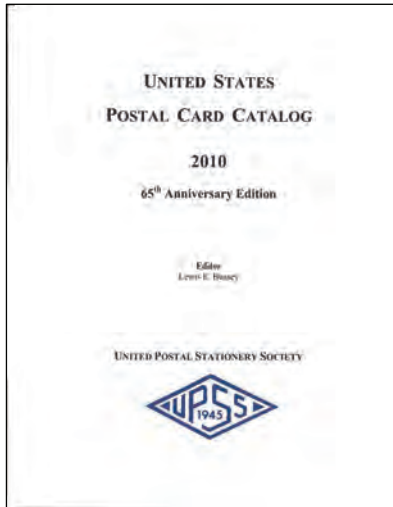
Note: The *London Philatelist* review of Part I of this catalogue, which was published in 2008 and covered air mail letter sheets, airgraphs and aerogrammes, was mentioned in *Postal Stationery Collector* Issue No 57 May 2009.

Postal Stationery of British India 1856-1947 by Pratisad Neurgaonkar, hard bound, 106p, colour ill, price and availability from the author / publisher, email: pratisad@hotmail.com.

There are over 20 different postal stationery categories, beginning with a QV letter sheet and finishing with the end of the Raj. Illustrations, many in full colour, are immaculately described and are referenced to the corresponding item in the Higgins & Gage, Jain and Lang catalogues. At the end of the book the author provides 'indicative' prices for mint items, and for some used. The catalogue will prove very useful.

United States Postal Card Catalog 2010 Edition, edited by Lewis Bussey

248 pp, hardbound or 3-hole punch loose leaf, illustrated in colour. Ordering information in August 2010 PSC.



The 2010 edition of the United States Postal Card Catalog has now been published. This publication is updated every five years. As with previous editions the catalogue provides a specialized listing of the postcards issued by the USA. It is comprehensive and detailed to the extent that we can only dream of for an Australian catalogue. The introductory notes are highly informative covering a chronology of US postal card Events, details of printing contractors and paper suppliers (including photos of printing presses), information on postcard production, usage and postage rates. Enhancements since the last edition include the use of colour, revision of the Specimen listings, updated postal rate tables, new appendices and updated listings.

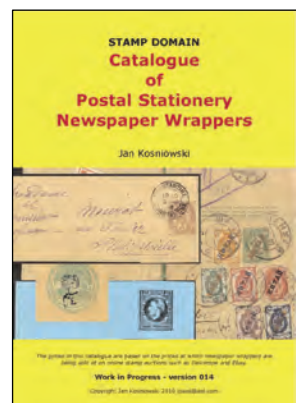
The listings include information on printers and the method of printing, date of issue, colour and stock and size. The catalogue is illustrated throughout in colour and items are priced mint, unused (ie addressed but not cancelled) and used. Where no issue date is known information is recorded on the earliest reported postmark. Varieties are listed and each has extensive notes. Detailed listings of the 1920 surcharges are provided.

Issues are recorded up to 1 October 2009. It is informative to look at the extent of recent issues of US postcards, many issued in booklet format. It is also interesting to note the catalogue prices allocated to used copies of modern cards which no doubt see relatively little commercial use. Official, specimen and vending machine ('Postal Buddy') cards are listed. The appendices cover Exposition cards and postmarks, coloured and semi-fancy cancels, overprints used on US cards for US administrative areas (Canal Zone, Cuba etc), local postcards and overprints, postal savings cards and reverse subject indexes.

In summary this is an excellent specialized catalogue and the UPSS should be commended on its continued production of the catalogue and its ongoing enhancement. It is recommended for all postal stationery collectors.

Catalogue of Newspaper Wrappers by Jan Kosniowski

Jan Kosniowski is in the process of compiling a "Catalogue of Postal Stationery Newspaper Wrappers" showing a colour illustration of all wrappers. A draft copy of this catalogue to date can be found at http://www.stampdomain.com/newswrapper/NW_Catalogue_015.pdf.



Interessengemeinschaft Neuguinea (ING)

ING is a German-based Society interested in the philately of the island of New Guinea. The Society was founded in 1971 and has over 100 members from all over the world including Austria, the Netherlands, the UK, USA, Canada, Australia and Papua New Guinea. The Society's website includes a catalogue of postal stationery of Papua, New Guinea and Papua New Guinea <http://i-ng.org/index.php?id=ganzsachen&L=2>. The catalogue includes information on aerogrammes, postcards, envelopes, private aerogrammes, registered envelopes and reply coupons. You need to be a member of the ING to access the full catalogue.

UPU Specimens: James Bendon

James Bendon's project to catalogue UPU postal stationery specimens has been mentioned previously in the PSC. The project continues to develop and now includes a list of the Australian UPU specimens. Readers may be interested to continue checking the website for updates <http://www.jamesbendon.com/postalstationery/index.htm>. If you are able to help with the listings please do so!

Avant qu'il ne soit trop tard: Belgium's "Van Acker" Issue of Stamps and Postal Stationery Surcharged -10% from 20 May 1946 by Michael Barden.

138 pp soft cover, spiral bound, illustrated in colour. Also released in pdf format on CD. Available from the author: Michael Barden, Box 156, Balwyn 3103, Australia (email nedrabm@bigpond.com).



This book covers Belgium's -10% issues known as the 'Van Acker' issues. Existing stocks of stamps and postal stationery were overprinted '-10%' as a result of the reduction of postal rates from 20 May 1946. In order to provide the necessary supply of stationery (and stamps) postmasters in many cases used local handstamps to revalue the stationery (and stamps) then on sale. Much obsolescent postal stationery, which had been printed before the September 1945 price rise, was also in post offices stocks. Some of this material had lain unsold for up to 20 years in post offices. These stocks were also surcharged locally by postmasters, mostly using the same provisional cachets.

This book covers the background and history of the issue (but is not a catalogue). The background of this issue is essential for both collectors of postal stationery and the adhesive stamps. The postal stationery is covered specifically in a chapter and an appendix of unlisted revalued obsolescent postal stationery, however, much of the remaining chapters are also relevant to stationery and essential in understanding the issue. These cover a detailed literature review, provisional surcharges, multiple and

manuscript surcharges, Malines surcharges, Errors of Libin & Rotheux-Rimièrre, forgeries & fantasies, postage after 20 May 1946, CCP receipts, translation from Dutch of the main parts of Vander Mijnsbrugge's catalogue, a 2004 unpublished interview with Jules Lejeune, writings of Raymond Marler and others about this issue and copious appendices with further information.

Auction News

Status International, Sydney on 26 August 2010 offered 16 lots of Commonwealth postal stationery, consisting of envelopes, lettercards, five postcards (all Victorian views), and registered envelopes, including current International registered envelopes in two sizes with missing tags and printing. Most items were unsold.

Status also offered 58 Queensland items, made up of 19 PTPO envelopes (mostly unsold), lettercards, including a lot of 23 which sold for \$300. A group of eight double reply cards, some with the inside card mis-perforated, sold for \$275. 38 illustrated post cards, ranging in time from 1880-1898, with some from 1910, were mostly unsold, as were a collection of 39 newspaper wrappers and a 1880s QV 1/- brown telegraph form.

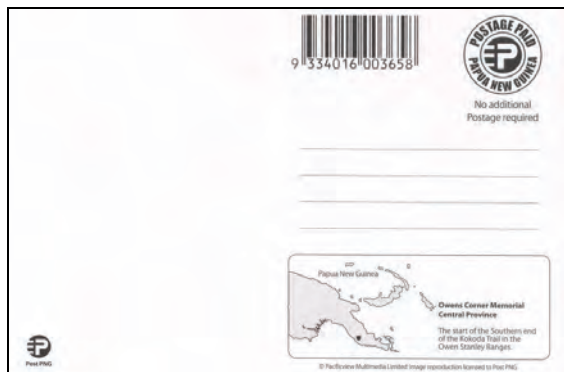
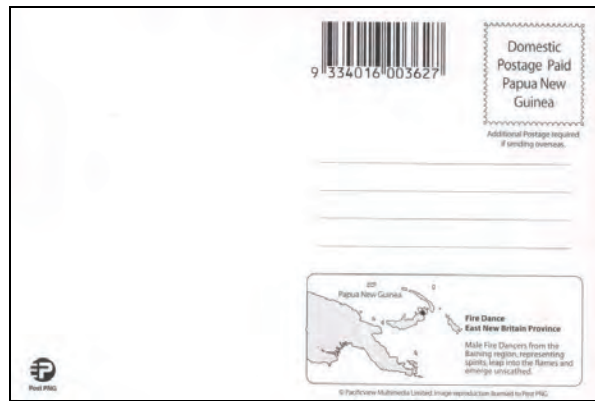
Robin Linke of Wembley WA had Postal Bid Sale No 23 on 24 September 2010. His catalogue had postal stationery offerings under three headings:

Lots 960 - 1133 Australia, with 45 lots of 1911 Coronation cards, which were nearly all sold, and a large offering of PTO envelopes and postal cards, some with Menuz Listing (PE) numbers. Of interest in this group were two lots of cut-outs: 1093 – 4d violet side face from envelope, cancelled Melbourne, estimated \$250, sold for \$285 (not listed in Menuz) and 1094 – 4d blue side face from envelope PE 11, cancelled Melbourne, estimated \$150, sold for \$250. Later, Lot 1110, octagonal die with ‘postage’ 1½d red brown illustrated window envelope for Solvol Soap, with a Melbourne machine cancel for May 1922, was estimated at \$25 but sold for \$110. Lots 1202-1225 Queensland, postal cards including 11 lots of 1898-1908 pictorial cards all sold. Lots 1612-1636 Western Australia, 25 lots of postal cards were offered. The item that attracted high bidding was Lot 1613, ½ d brown on salmon postcard used locally in Fremantle for advertising, estimated \$25, sold for \$95.

NEW ISSUES

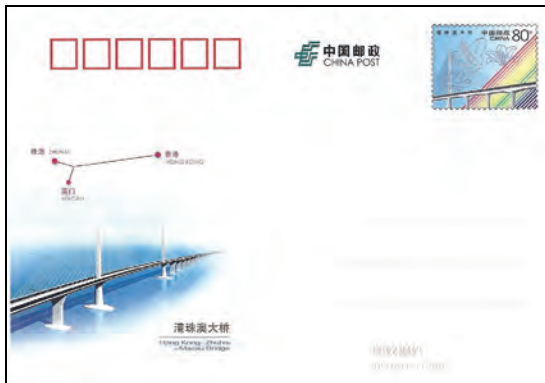
Papua New Guinea

I haven't seen them reported elsewhere but the ING website mentioned above lists a set of 16 postcards with views issued by Papua New Guinea in 2004. 13 of these are pre-paid for inland mail and 3 pre-paid for international mail.



China

Illustrated below is a range of Chinese stationery including two postcards for Expo 2010 in Shanghai and a Father's Day card from Taiwan.



North Korea

North Korea continues to issue a range of envelopes, aerogrammes and postcards aimed at the thematic market including the envelope and aerogramme illustrated depicting birds.



Thailand

Illustrated below is the current local postcard in use in Thailand and a prepaid envelope sold in packs of 10.



New Zealand

Two examples of local stamped envelopes from NZ Mail and from DX Mail are illustrated below.



USA

USA issued a set of ten 'oversize postal cards' showing scenes from the Hawaiian Rain Forest on 1 September 2010 selling for \$8.95. The cards were issues in pairs separate by rouletting. The reverse of the card shows a composite design of a Hawaiian rain forest while the 44c stamps are based on part of the design. The stamps are the letter rate of 44c as the postcards are too large to pass at the postcard rate.

