

Catalogue Listing of Postcards

Distinguishing features used in this listing:

		
1d Rose	1d Centennial Type 1 "One Hundred Years" above value tablet	1d Centennial Type 2 Waratah above value tablet
		
2d Blue	3d Green	
	 1st Pearl incomplete Shading indistinct	
1d Jubilee Die 1	1st Pearl complete Shading distinct	1d Jubilee Die 2
		
1½d Blue Type 1 Unshaded value 3 rings around value Blank tablet	1½d Blue Type 2 Unshaded value 2 rings around value Blank tablet	1½d Blue Type 3 Shaded value 2 rings around value Value in tablet
		
1½d Blue Type 4 Waratah replaces "100 years" 2 rings around value	1½d Blue Type 5 Re-engraved Die Single solid ring around value	
Fig.1 Stamp Types		

Notes

Size

Variations of a few mm from listed sizes can be expected on all issues. Some early cards, notably PC2, PC3 and PC3b were sometimes sold as uncut sheetlets, and a greater variation can be found.

The greatest variations can be found in PC13 and PC16. These cards were both intended for international use, but were both far larger than UPU regulations permitted. Some cards were guillotined to correct size by the post office, and others evidently at point of sale or by users (sometimes rather crudely). Thus a wide variation of sizes between 163 x 90 (issued size) and 140 x 90 (UPU regulations) may be found.

Prices

Three dashes (---) indicates not known to exist.

Prices for view cards (PC19 onwards) are based on the assumption that all designs are of roughly equal scarcity. Two notable exceptions are discussed under PC19a.

For reply cards, two prices are given o) for outward use of card and r) for correct use of reply card. Used reply cards for international destinations are notably scarce.



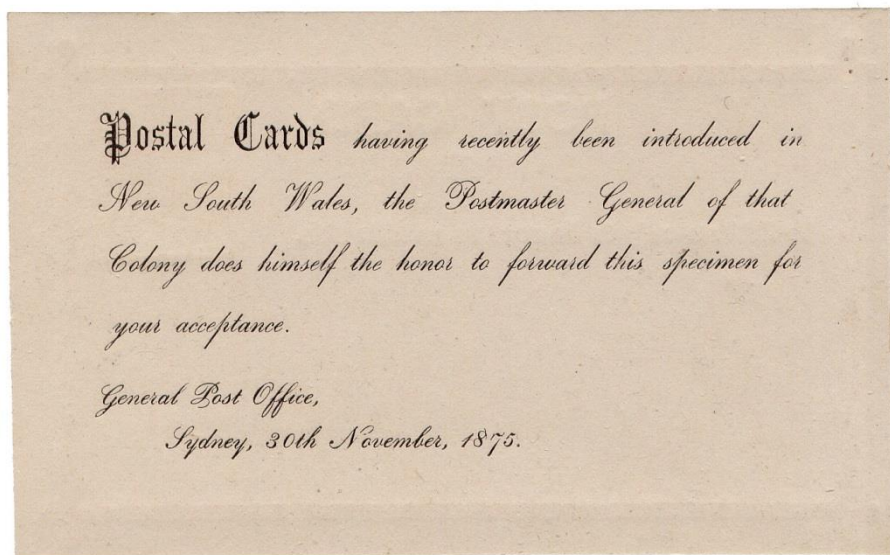
PC1	1875 1d Rose on thin white card. "T" of "To" in ornate type. Probably a trial printing. No used examples known.	50	---
------------	---	----	-----



PC2	1875, October 1. "T" of "To" in italic type. 122 x 85mm	50	80
------------	---	----	----



Central section 7mm



Reverse of Publicity
card distributed by
Post Office (PC3v)

Central section 7mm

PC3	1875, November 25. 1d Rose. Smaller size. 118 x 70-74mm. Central bamboo section 7mm long. Thin card (0.17mm)	60	90
PC3a	As above, on thicker card (0.38 mm).	40	70
PC3v	As PC3 – publicity card from Post Office	100	---



Central section 9mm



Specimen

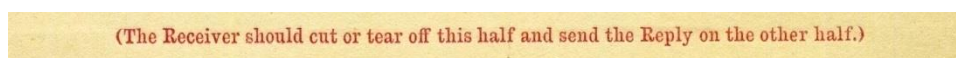


Specimen

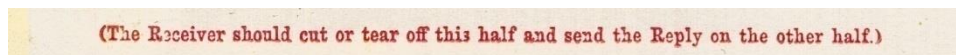
PC3b	1d Rose central bamboo section 9mm long. Thicker card.	30	40
PC3bs1	As PC3b, overprinted Specimen, Type B6	30	---
PC3bs2	As PC3b, overprinted Specimen, Type B12	30	---



SPECIMEN



97 mm



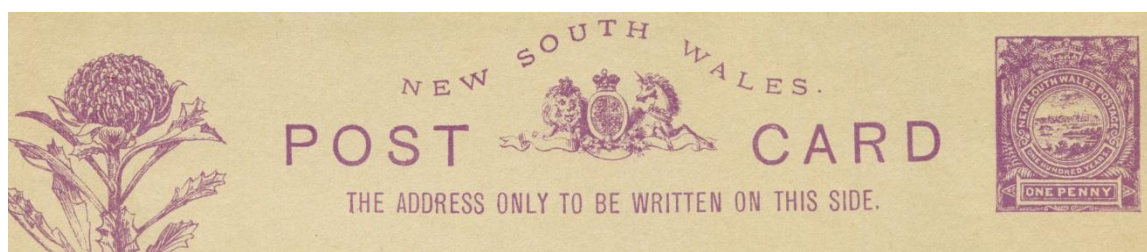
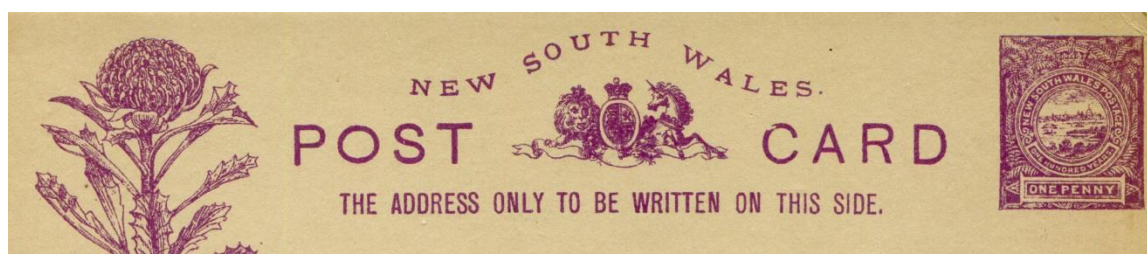
102 mm

PC4	1883, January 5. Reply card. 1d Rose. 126 x 88mm. Footnote 97mm long	30	o) 40 r) 70
PC4s	As PC4, overprinted Specimen, Type B7	30	---
PC4a	1886. As above but footnote 102mm long	30	o) 40 r) 70



Specimen

PC5	1887, October 15. 1d Rose. 152 x 83-84. New design with waratah at left.	20	30
PC5s	As PC5, overprinted Specimen Type B12	20	---



PC6	1888 August 16. 1d Centennial Type 1 Oval "O" in	20	30
-----	--	----	----

"POST"

PC6a	1d Centennial Type 1 Round "O" in "POST"	20	30
PC6as	As PC6a, overprinted Specimen, Type B 14	20	



SPECIMEN.



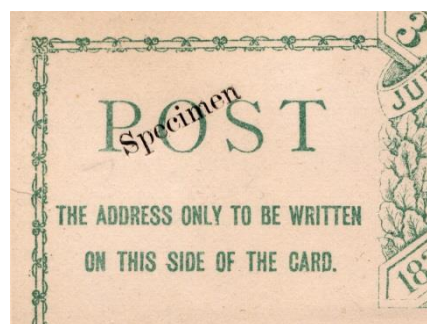
PC7	1889, January 1. 2d Blue	50	120
PC7s	As PC7, overprinted Specimen, Type B15	70	---
PC8	1889, January 1. 3d Green	50	120
PC8s	As PC8, overprinted Specimen, Type B15	70	---

Used prices are for cards used while these rates applied, i.e. before October 1891.

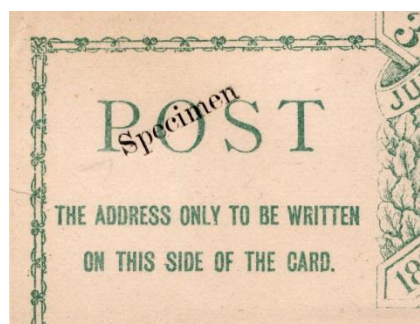


SPECIMEN

PC9	1890, January 1. 1d Centennial Type 1. 159 x 90 mm. Card design as for PC5.	10	15
PC9s	As PC9, overprinted Specimen Type B19	20	---



Specimen



PC10	1890, August 7. 3d Green. Card PC8 overprinted with "and for France" at right.	70	160
PC10s	As PC10, overprinted Specimen, Type B17	90	---
PC11	1891, January 2. Re-designed border.	70	160
PC11s	As PC11, overprinted Specimen, Type B17	90	---

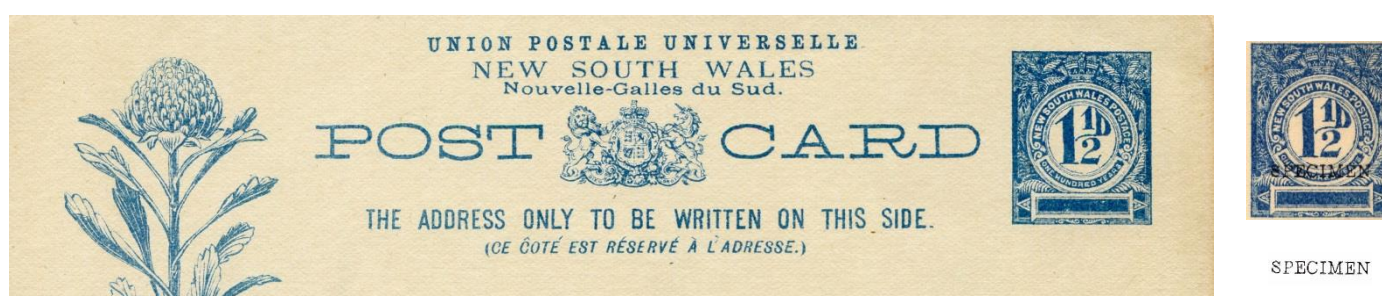
Used prices are for cards used while these rates applied, i.e. before October 1891.



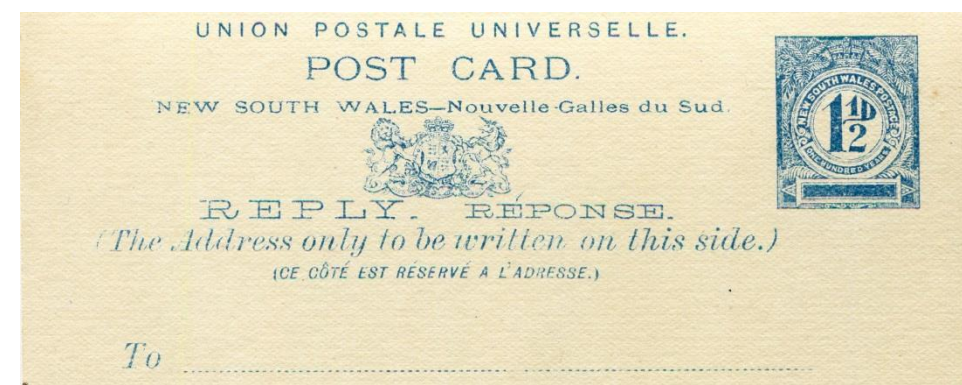
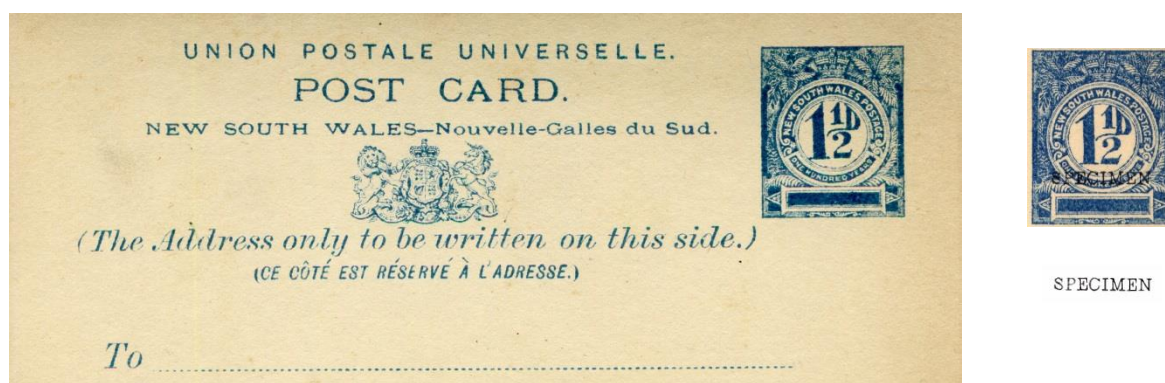
SPECIMEN.



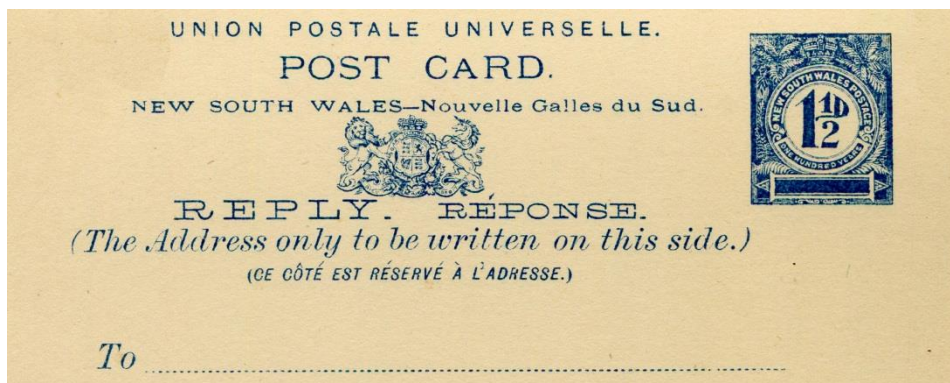
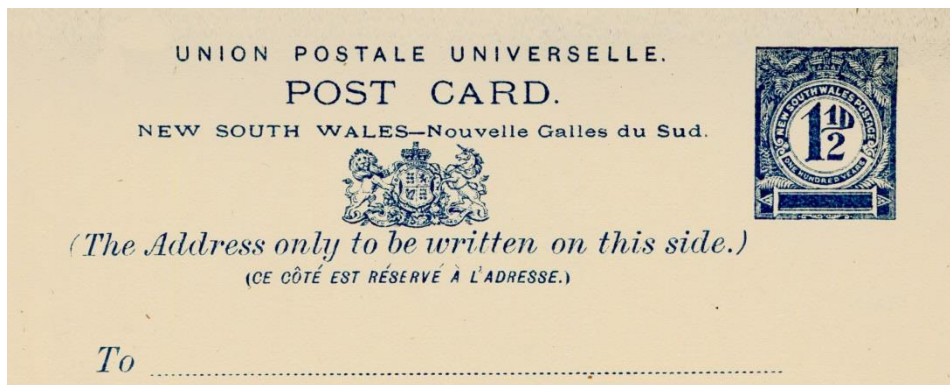
PC12	1890, April. Reply Card. 1d Centennial Type 1.124 x 85 mm.	20	o) 30 r) 50
PC12s	As PC12, overprinted Specimen, Type B14	30	



PC13	1891 October 23. 1½d Type 1. 163 x 90 mm. Errors in heading – hyphen between “Nouvelle” and “Galles”, and circumflex incorrectly over Ç of “COTE” instead of Ô.	20	30
PC13s	As PC13, overprinted Specimen Type B19	20	---



PC14	1891 October 23. 1½d Type 1. 127 x 83 mm. Error in heading – hyphen between “Nouvelle” and “Galles.”	30	o) 75 r) 500
PC14s	As PC14, overprinted Specimen Type B19	40	---

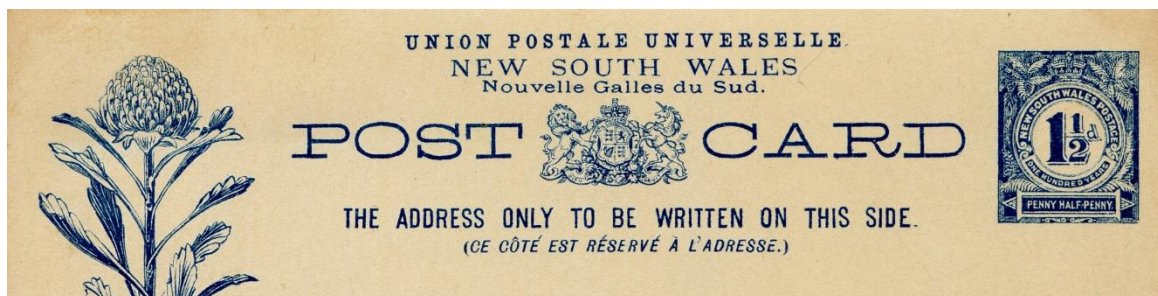


PC15

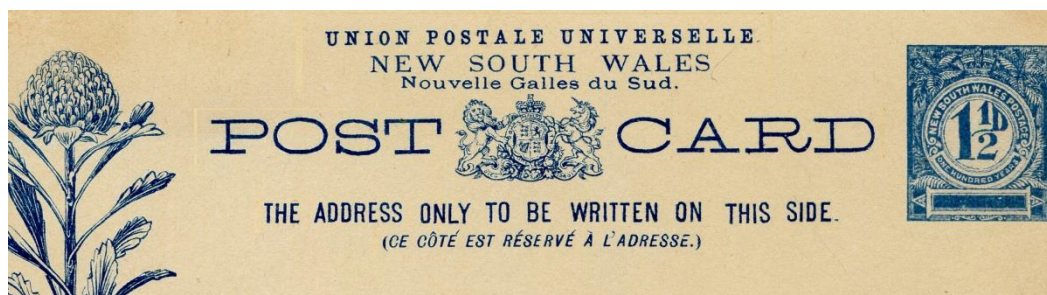
1894. 1½d Type 2. 128 x 83 mm. Incorrect hyphen removed.

50

o) 75
r) 500



Specimen



PC16

1895, June. 1½d Type 3. 163 x 90 mm. Corrected heading.

20

30

PC16a

1896, May. 1½d Type 1. Corrected heading. PC16a is considered to be a trial printing of the revised heading. A small quantity of these were released to the public in 1896. Six examples are known.

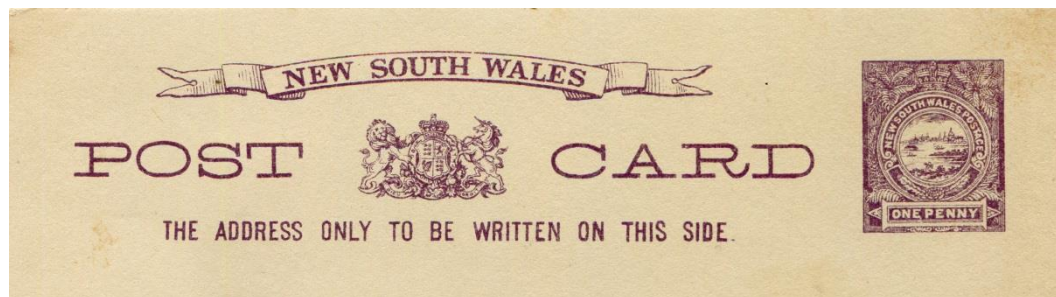
500

750

PC16s

As PC16, overprinted Specimen, Type B11

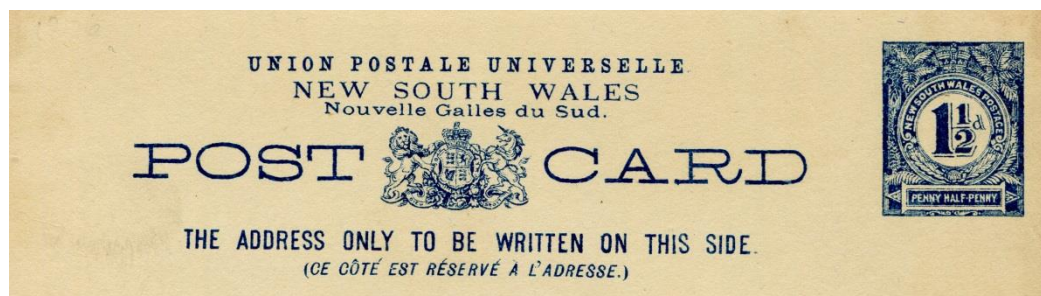
30



Specimen

PC17 1896, September 8. 1d Centennial Type 2. 140 x 90 mm. 15
PC17s As PC17, overprinted Specimen, Type B23 25

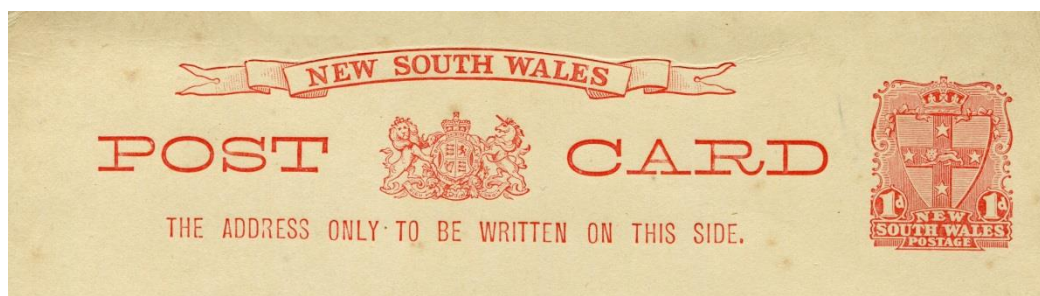
20



Specimen

PC18 1897, February 27. 1½d Type 4. 140 x 90 mm. 20
 Circumflex over "ô" faint
PC18s As PC18, overprinted Specimen, Type B11 30

30

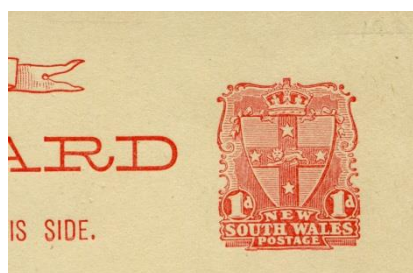


Specimen



Low setting of heading (left)

High setting of heading (right)



SPECIMEN

Specimen Type B23, applied diagonally across stamped face of card

PC19 1897, August 27. 1d Jubilee Die 1. 140 x 90 mm. Heading 15
 is low setting.
PC19a Scenic View on reverse "Greetings from" (PC19 and 20
 PC19d)
PC19b Scenic View on reverse "With Christmas Greetings" 50
 (PC19 only)
PC19bs1 As PC19b, overprinted Specimen, Type B23 in blue 90
PC19bs2 As PC19b, cancelled with 3 ring cancel 80
PC19c Scenic View on reverse "With New Year Greetings" 50
 (PC19 only)

20
 30
 80

 80

PC19cs	As PC19c, overprinted Specimen, Type B23 in blue	90	---
PC19cs2	As PC19c, cancelled with 3 ring cancel	80	---
PC19d	1900 1d Jubilee Die 1. Heading is high setting	15	20
PC19s	As PC19, overprinted Specimen, Type B23	30	---

PC19a Scenic views are the most commonly found views, with two exceptions. PC19a with View 4b Fairy Dell, Leura and View 18 Dot's Glen, Castle Road, Katoomba are known from a handful of examples. When last offered at auction in 2013 , these two views sold for \$1955 and \$1265 respectively.



Specimen



PC20	1897, September. Reply Card . 1d Jubilee Die 1. 128 x 83 mm	25	o) 60 r) 150
PC20s	As PC20, overprinted Specimen, Type B23	30	---



PC21	1900 (?). 1d Jubilee Die 2. 140 x 90 mm.	15	20
PC21a	Scenic View on reverse "Greetings from"	45	75





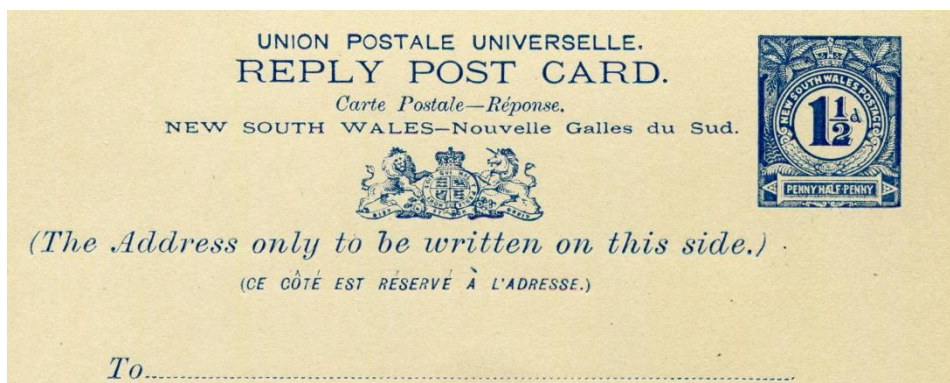
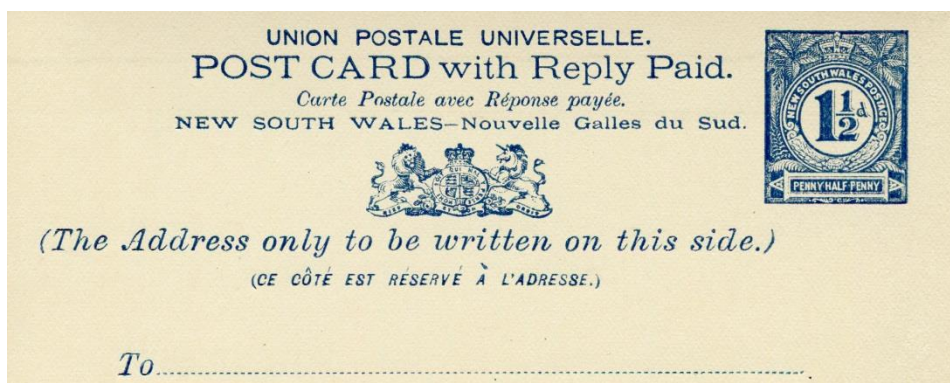
PC22	1900 (?). Reply Card 1d Jubilee Die 2. 128 x 93 mm	25	o) 60 r) 150
-------------	--	----	-----------------



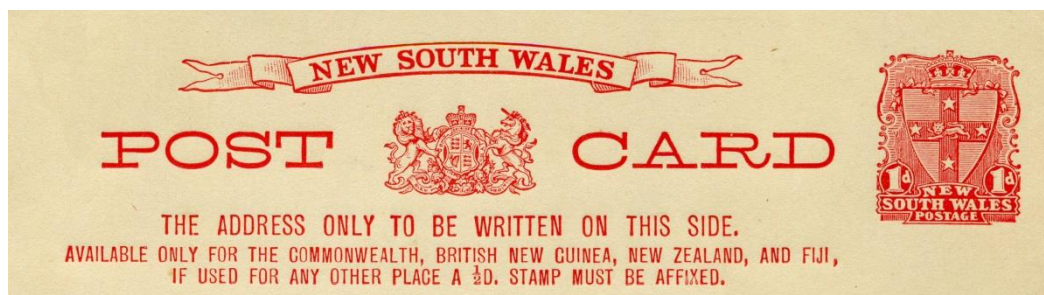
	SPECIMEN		
PC23	1898. 1½d Type 5. 140 x 90 mm. Circumflex over "Ô" bold	20	30
PC23a	Scenic View on reverse "With Christmas Greetings"	40	70
PC23as	As PC23a, overprinted Specimen, Type B23 in red	90	---
PC23b	Scenic View on reverse "With New Year Greetings"	50	80
PC23bs	As PC23b, overprinted Specimen, Type B23 in red	90	---



PC24	1903 (?). Reply Card 1d Jubilee Die 1. 127 x 83 mm.	25	o) 60 r) 150
-------------	---	----	-----------------

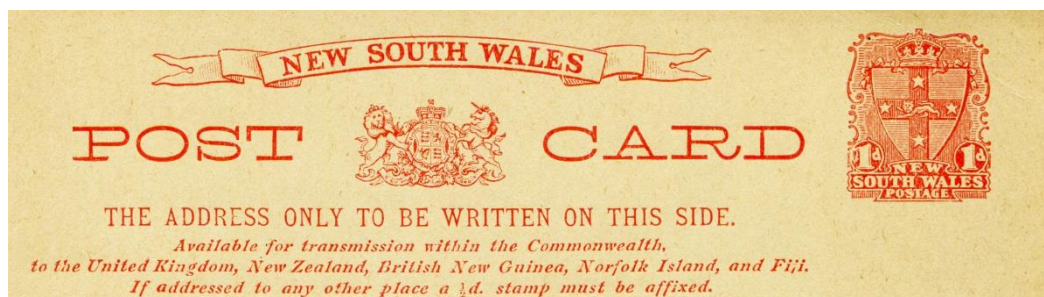


PC25	1903 (?). Reply Card 1½d Type 5. 128 x 93 mm.	35	o) 60 r) ---
-------------	---	----	-----------------



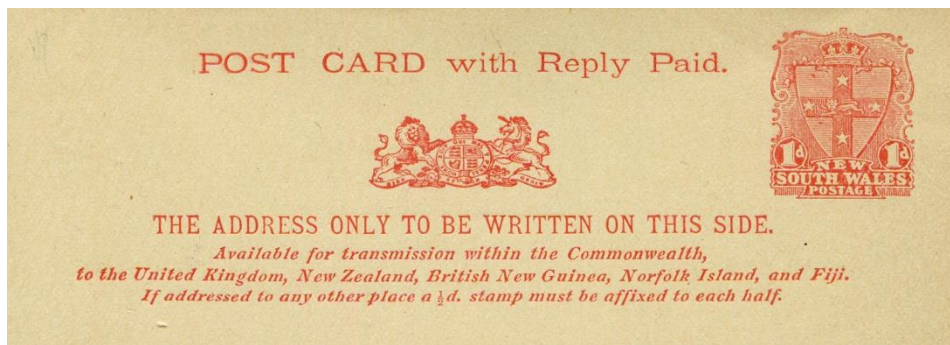
PC26	1904, January. 1d Jubilee Die 2. 3 lines of text. 140 x 90 mm.	35	50
-------------	--	----	----

PC26a	Scenic View on reverse "Greetings from"	70	80
--------------	---	----	----

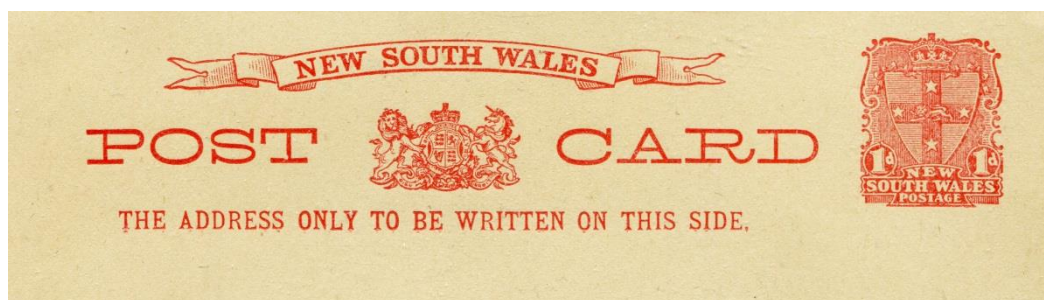


PC27	1906, September. 1d Jubilee Die 2. 4 lines of text. 140 x 90 mm.	35	50
-------------	--	----	----

PC27a	Scenic View on reverse "Greetings from"	70	80
--------------	---	----	----



PC28	1906, September. Reply Card 1d Jubilee Die 2. 128 x 83 mm.	40	o) 70 r) 150
-------------	--	----	-----------------

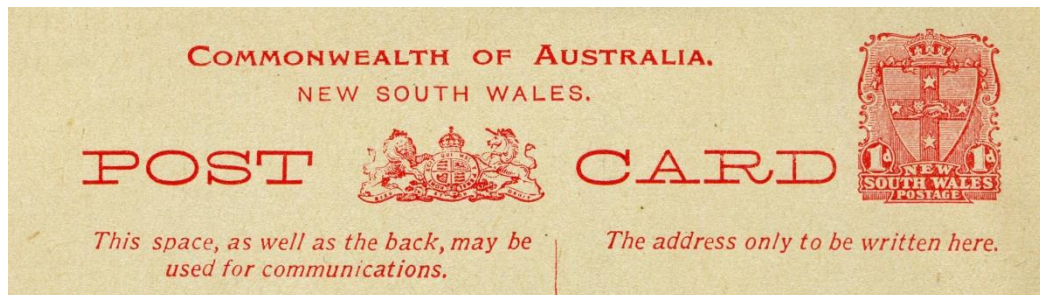


PC29	1906, late (?). 1d Jubilee Die 2. "The Address Only..." in serif type. 140 x 90 mm.	80	80
PC29a	Scenic View on reverse "Greetings from"	120	120



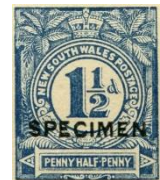
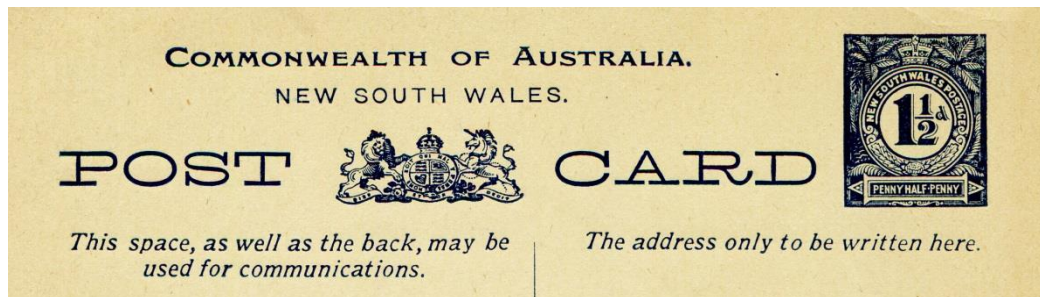
PC30	1906, late (?). Reply card. 1d Jubilee Die 2. "The Address Only..." in serif type. 128 x 83 mm.	600	o) 600 r) ---
-------------	---	-----	------------------

A very rare card known from 2 examples only.



SPECIMEN

PC31	1d Jubilee Die 2	30	40
PC31a	Scenic View on reverse, no heading	120	160
PC31b	Scenic View on reverse "Greetings from"	120	160
PC31s	As PC31, overprinted Specimen, Type B25	80	---



SPECIMEN

PC32	1 1/2d Type 5	30	40
PC32s	As PC32, overprinted Specimen, Type B25	80	---



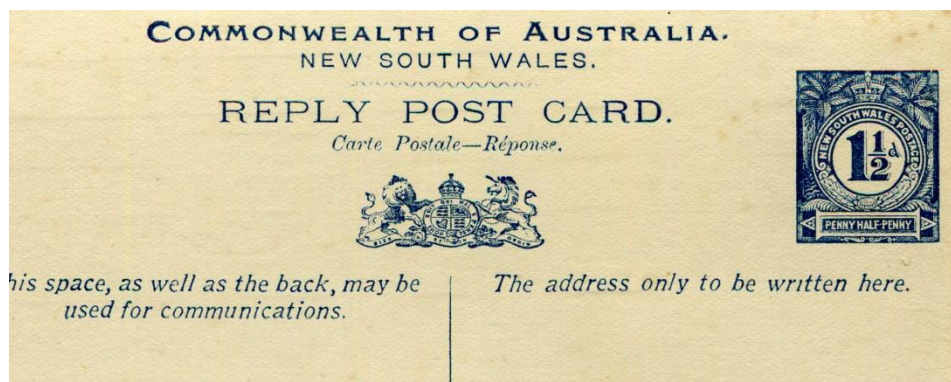
SPECIMEN



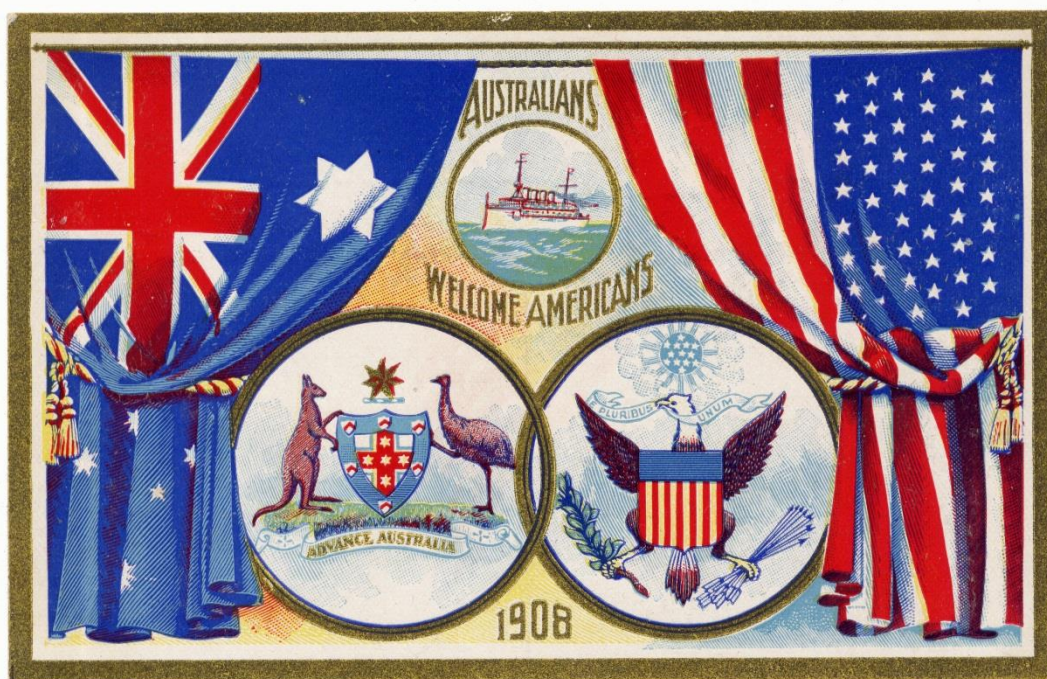
PC33	1907, January. Reply Card 1d Jubilee Die 2. 137 x 89 mm.	40	o) 60 r) ---
PC20s	As PC20, overprinted Specimen, Type B25	80	---



SPECIMEN



PC34	1907 (?). Reply Card 1½d Type 5. 128 x 83 mm.	1200	o) 1400 r) ---
PC34s	As PC20, overprinted Specimen, Type B25 A very scarce card known from 3 examples only.	1200	---



PC35	1908, August 18. As PC31 with multicoloured reverse as above, to commemorate the visit of the American Great White Fleet. 1d Jubilee Die 2. 140 x 90 mm.	120	200
PC36	1908, August 18. The same on reverse of PC32. 1½d Type 5. 140 x 90.	250	400

