

Postal Stationery

Welcome to the first postal stationery column for 2022. This month's column looks at the preparation of dies for the New Zealand 1935 Fantail and Kiwi postal stationery, new issues of postal stationery from Australia Post and planned postal stationery activities for 2022.

Christmas 2021 Pre-Paid Postcards

Six large format Christmas Pre-paid Postcards were issued on 1 November 2021 (Figure 1). The postal cards feature Santa, Reindeer, Christmas Tree, Christmas Gift, Merry Christmas (Figure 2) and Baubles (Figure 3) and four are inscribed 'Merry Christmas'. As the postcards prepay postage internationally at a cost of \$2.40, they represented an economical means of sending Christmas greetings around the world.

A further five prepaid postcards were issued in the smaller format and sold as a set with no barcode printed on the front of the card. Two of the postcards depicted artworks made from terracotta clay and glazed in a technique first introduced in Renaissance Italy by the Florentine



Top to bottom : Figure 1 Christmas 2021 Prepaid Postcard

Figure 2 'Merry Christmas' Prepaid Postcard

Figure 3 Christmas Baubles Prepaid Postcard

Left : Figure 4 Madonna Terracotta Plaque Prepaid Postcard

Ian McMahon

della Robbia family of artists. One shows the Madonna tenderly cradling the infant Jesus in her arms, with the Latin *posuerunt me custodem* ('they have appointed me as guardian') inscribed below. This plaque was made in the Italian Umbrian town of Deruta in the 17th century. The round plaque or tondo represented on the other postal card was made in the late 19th century by Florence manufacturers Figli de Giuseppe Cantagalli. It shows a crowned Madonna as Queen of Heaven clasping the standing Christ Child with four cherubim in the background,

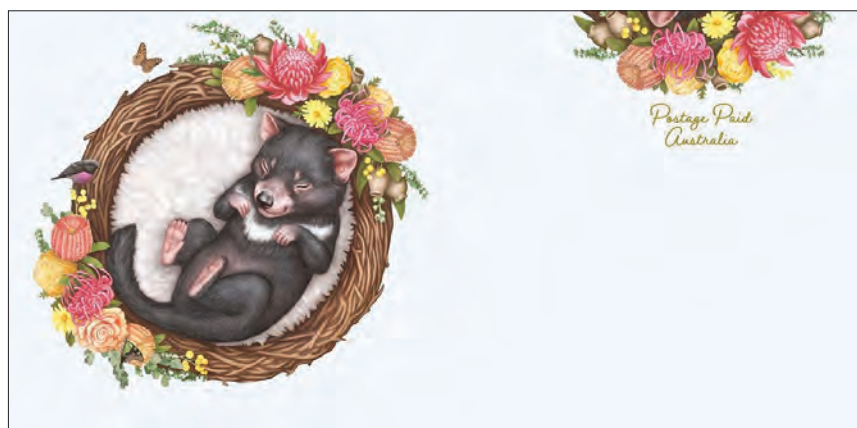
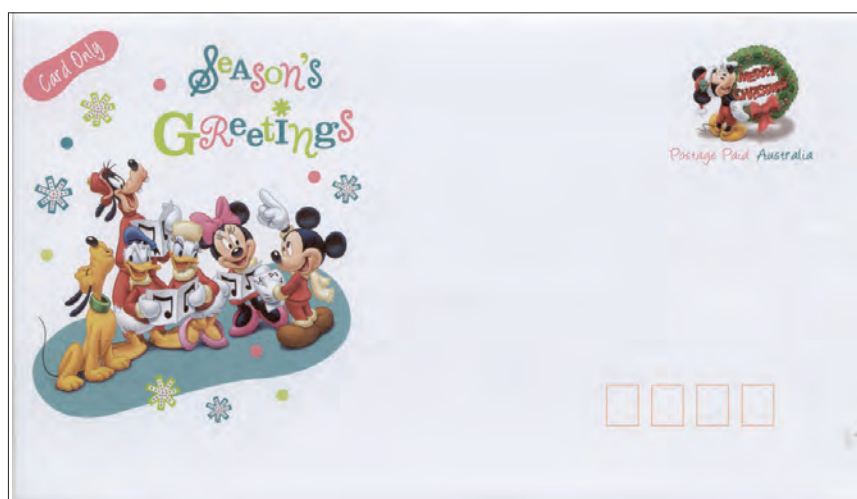
encircled by a festoon of decorative leaves, fruit, pinecones and flowers (Figure 4). The other three postcards depicted Gingerbreads in the shape of a tree, a star and a Christmas present (Figure 5).

Elf on the Shelf Christmas Card Pre-Stamped Envelope

Christmas 2021 marks the return to Australia Post selling packs of Christmas cards with pre-paid envelopes which was a common practice for Christmas during the period 2004-2011 (Figure 6). The 2021 pack includes five 'Elf on the Shelf' Christmas cards with five pre-paid envelopes with an Elf on the Shelf design (Figure 7) for \$7.95.

Dreaming Down Under Pre-Stamped Envelopes

Five Dreaming Down Under pre-stamped envelopes were issued on 1



Above : Figure 5 'Christmas Present' Gingerbread Prepaid Postcard

Left top to bottom : Figure 6 2009 Christmas Card Pack PSE

Figure 7 'Elf on the Shelf' PSE

Figure 8 Tasmanian Devil Dreaming Down Under PSE

Postal Stationery

November 2021 featuring a Kangaroo, a Koala, a Dingo, a Tasmanian Devil (Figure 8) and a Wombat selling for \$1.35. The indicium on the envelopes shows a floral arrangement of Australian flowers. The envelopes are similar in design to recently issued Dreaming Down Under philatelic numismatic covers (PNCs) which were not issued mint. An indigenous military service PNC was also issued on 11 November 2021 (Figure 9).

First Regular Airmail Prepaid Postcard

While French aviator Maurice Guillaux made the first airmail flight in Australia in 1914 carrying a range of souvenir postcards, official letters and parcels, the regular domestic airmail service in Australia began seven years later in 1921 following a call for tenders to operate a subsidised airmail service in the north-west of Western Australia. At the time, mail delivery in that part of the country was a monthly service that took around two weeks by steamship. The tender was won by businessman and aviator Norman Brearley who established Western

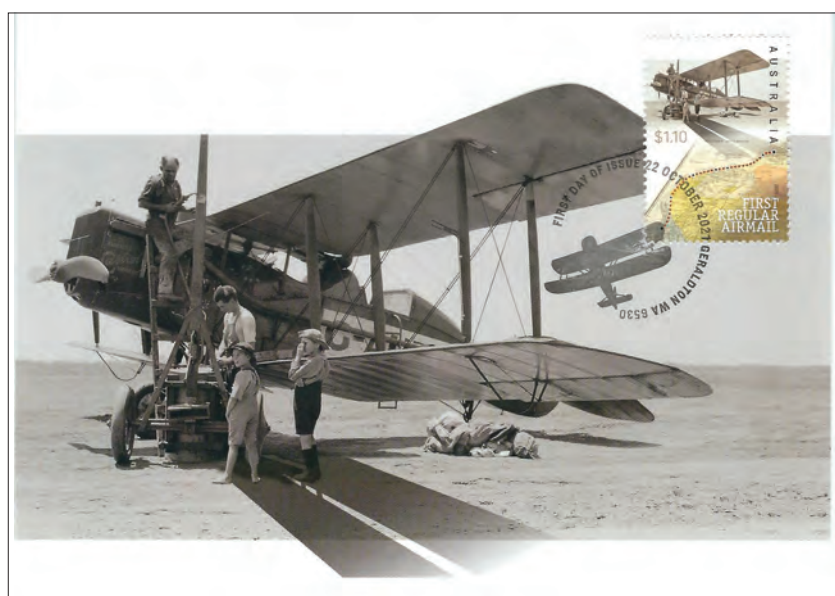
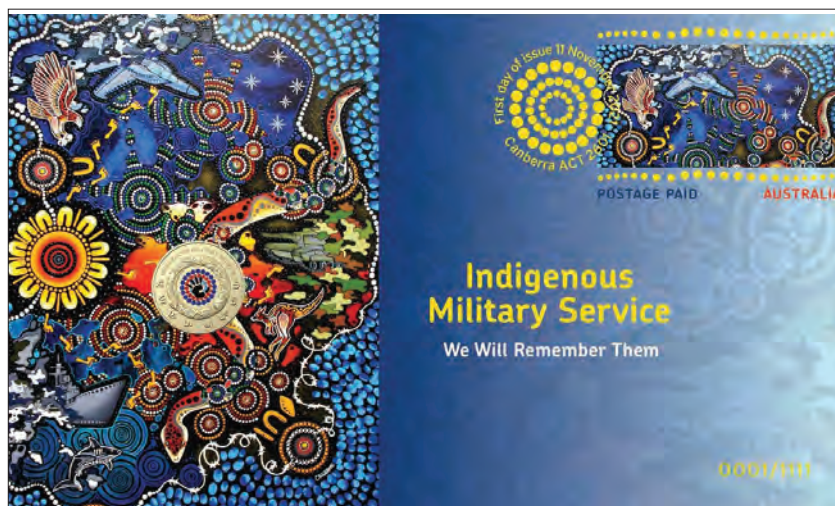
Australian Airways, acquiring six WAA Bristol Tourers for the weekly service between Geraldton and Derby which took around three days with stops at Carnarvon, Onslow, Roebourne, Port Headland and Broome. Sadly, 130 kilometres out of Geraldton on the service's inaugural flight on 5 December 1921, one of the Bristol Tourers crash-landed, killing the pilot and mechanic prompting the suspension of the service until work was carried out to improve the landing grounds. A minor air service to Port Hedland was established on 22 February 1922 and the full service to Derby restarted on 6 April. QANTAS won the second airmail contract a year later, in November 1922, which flew the inland Queensland route.

A prepaid postcard was issued on 22 October 2021 to mark the inaugural flight with the picture side showing a photograph of the Tourer refuelling

Right : Figure 9 Indigenous Military Service PNC

Below Left to right : Figure 10 First Regular Airmail Prepaid Postcard

Figure 11 Buller's Drawing of the Fantail



Ian McMahon



Above : Figure 12 Kiwi and Fantails Designs for Preparation of Postal Stationery Dies

Top Right : Figure 13 1/2d 1935 Fantail Postcard

Right : Figure 14 1d 1935 Kiwi Lettercard



at Carnarvon in 1922 (Figure 10). The card was designed by Lynda Warner.

Production of the Master Dies for Printing New Zealand Fantail and Kiwi Design Postal Stationery

Many of the master dies for New Zealand postal stationery were prepared in the United Kingdom by one of the London-based security printers such as Perkins Bacon and De La Rue. In some cases, such as the stamp design for the first postcards, the master die was used to produce the working dies for both postal stationery and for the adhesive stamps.

One issue where this was not the case was the

master dies for the Fantail and Kiwi designs used on postcards, lettercards and wrappers from 1935. This article looks at the process for ordering and producing these dies as documented in the records of De La Rue Company Ltd as filmed by the Australian Joint Copying Project and available on the National Library of Australia website <https://nla.gov.au>

The New Zealand Post Office tendered for the production of master surface dies for the manufacture of plates for printing postcards, lettercards and newspaper wrappers with the Fantail and Kiwi designs on 18 August 1932. The tender documents ask for tenders for *the surface printing master die required for 1/2d and 1d denominations to be of*

Postal Stationery

hardened steel and to be so engraved as to be suitable for the manufacture of plates for printing Postcards, letter cards and newspaper wrappers. To be similar generally and in style of engraving to the specimen master die (½d denomination) and to be suitable for use with the pattern collar which was available along with relevant drawings for inspection at the High Commission.

On 1 September 1932, De La Rue submitted its tender for producing the surface printing dies at a cost of £30 each. The tender from De La Rue to supply the surface printing master die and collar required for the ½d and 1d denominations for the manufacture of plates for printing postcards, lettercards and newspaper wrappers was accepted on 1 December 1932.

The contract was managed by W M Cook of the Stamp Section, Post Office Stores Department at Somerset House in London. The High Commission provided De La Rue with a pattern die and collar, the original designs for the ½d and 1d stamps and two bromide reproductions (Figure 11) to enable them to proceed with preparing the dies on 13 January 1933. These were to be returned by De la Rue. The ½d design was based on the drawing of the pied fantail in Buller's Birds of New Zealand (Figure 11) with the background being New Zealand Clematis (Puawhananga).

Three proofs of each of the dies were sent to the High Commission on 28 February 1933 with photographs of the original dies. The Stores Department then asked on 7 March 1933 for two proofs of each die on samples of the postcard, lettercard and wrapper paper to be used for the actually printing. These were provided on the same day. As can be seen from Figure 12, the 1d design had narrow vertical uncoloured strips on the side of each of the

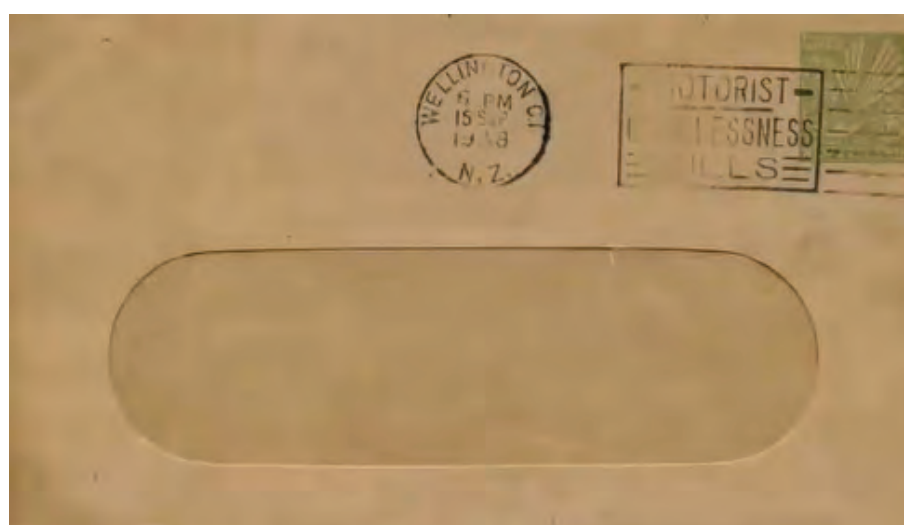
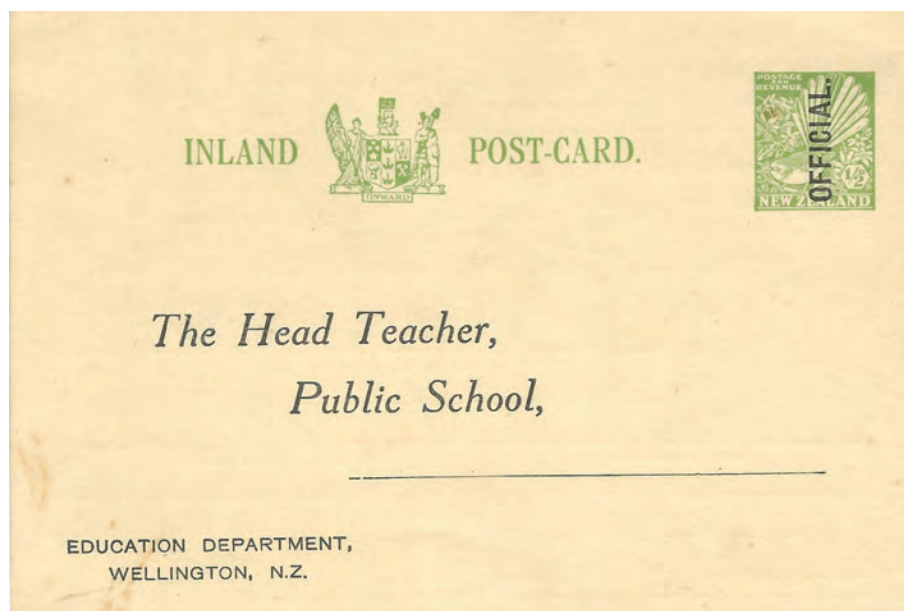


Figure 15 ½d Fantail Postcard for the Department of Education

Figure 16 ½d Fantail STO envelope for Alliance Finance

panels with the Māori carvings. The nom-de-plume 'MYRON' on the ½d was removed from the design.

De La Rue was advised on 22 March 1933 that the proofs appeared to be satisfactory and had been sent by the High Commissioner to the Post and Telegraph Department in Wellington on 22 March 1933. They were asked not to harden the dies until advice had been received from New Zealand that the proofs were satisfactory. It was not to be until August that a reply was obtained. On 23 August 1933 that the High Commission advised that the ½d die had been approved and could be hardened.

Ian McMahon

De La Rue sent the hardened ½d die and collar as well as returning the pattern die and collar to the High Commission on 14 September 1933.

For the 1d, however, the New Zealand Post Office asked for an amendment to the border and enclosed a drawing indicating the changes. The proposed changes were to widen the side panels, remove the white borders on the side panels, and redesign the Māori carving. On 29 August 1933, De La Rue advised that this would require the creation of a new die at the cost of £26 pounds and asked if they should proceed. On 6 October 1933 High Commission agreed to pay the £26 pounds for the new die with De La Rue advising that they had commenced work on the die on 9 October 1933. (De La Rue also produced the intaglio die for printing adhesive stamps and was able to start work on the modified design for that at the same time). Proofs of the revised 1d design were provided on 23 November 1933. A request on 27 November for one to two proofs from the 1d die on newspaper wrapper, post and letter card paper in carmine were supplied same day. The 1d hardened die was received by the High Commission on 7 February 1934.

Postcards and wrappers using the ½d fantail die (Figure 13) were issued on 1 May 1935 along with lettercards and wrappers impressed with the 1d Kiwi design (Figure 14). The ½d fantail was

also used on Department of Education postcards with an official overprint (Figure 15) and on STO envelopes for Alliance Finance, Wellington (Figure 16). Volume 9 of the Postage Stamps of New Zealand by Robert Samuel and published by the Royal Philatelic Society of New Zealand (the major reference on the postal stationery of New Zealand) in 2006 reports that the following proofs have been recorded:

- ½ d black before hardening (dated 28.2.33)
- After hardening (dated 7.3.33)
- 1d side panels narrow, vertical uncoloured strips of side of panels
- 1d black before hardening (dated 28.2.33)
- After hardening (dated 7.3.33)
- 1d white borders removed, panels wide and Māori carving redesigned: (dated 23.11.33) black
- 1d carmine

PSSA On-Line Meetings

The Postal Stationery Society of Australia (PSSA) is continuing with its program of on-line meetings. The November 2021 meeting was on Fiji Airletters and Postal Stationery by Paul Xavier (Figure 17). The videos of these presentations (and/or Power-Point or pdf presentation), and most earlier presentations can be viewed by following the links on the PSSA website or the PSSA Facebook page.



Canberra Stampshow 2022 and PSSA Meeting

The next national postal stationery competition is planned to be held at Canberra Stampshow 2022 will be held at Thoroughbred Park, 1 Randwick Road, Lyneham, Canberra on 18-20 March 2022. The Postal Stationery Society of Australia (PSSA) will hold a meeting at the exhibition on Sunday 20 March. I look forward to seeing you there.

Figure 17 Fiji 5c on 8c Aerogramme

Postal Stationery

Welcome to the second postal stationery column for 2022. This month's column looks at the aerogrammes and airmail envelopes of the British Solomon Islands Protectorate and the Solomon Islands.

Solomon Islands Aerogrammes and Air-mail Envelopes

The British Solomon Island Protectorate commenced using airletters soon after World War II with the issue of an unstamped 'AIR MAIL LETTER CARD' (Figure 1) similar in design to the contemporary forms of New Zealand, Fiji and Tonga. One of these airletters used by the Post Office used in 1947 is illustrated in the Kessler Catalog of World Aerograms Volume 1.

The initial airletter rates depended on the destination. From 1 June 1951, the airletter rates ranged from 4d to Australia, 5d to New Zealand, 8d to UK, 10d to South Africa, 1/1 to the USA and 1/4 to Brazil. On 1 August 1953, the rates were standardized at 8d to all destinations. The aerogramme rate was increased to 9d on 1 April 1950 which became 8c on 14 February 1966 when Australia converted to decimal currency and, as at the time the British Solomon Islands used Australian currency, they converted to decimal currency as well. The published rate table noted that 'suitable aerogramme forms were purchasable from the post office'. The rate was increased to 9c in 1971.

Formular (unstamped) airletter and aerogramme forms issued by the Australian Post Office for use in Australian territories were also used in the British Solomon Island and are believed to have been sold by the British Solomon Island Post Office. These forms were similar to the Australian stamped aerogrammes but with no indicium, requir-

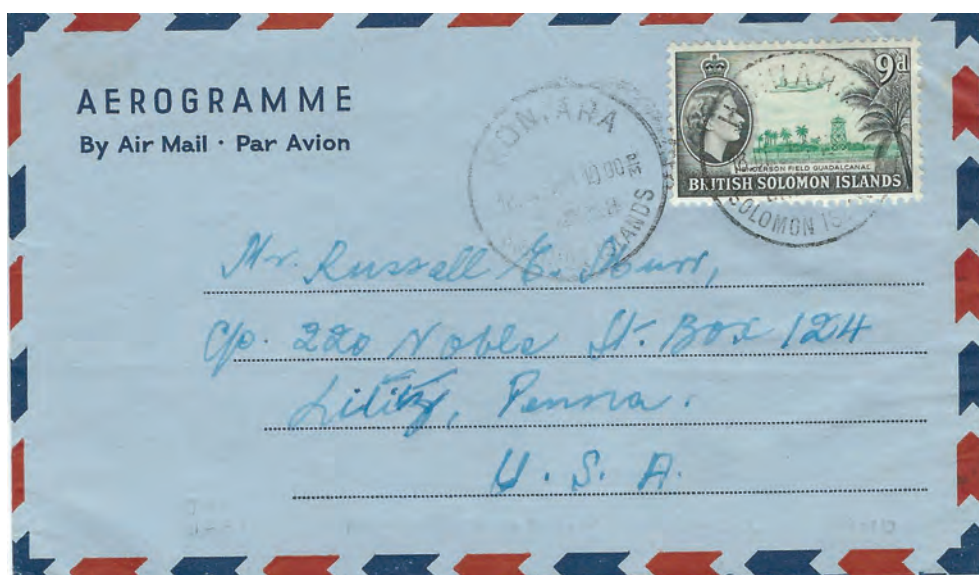


Figure 1 British Solomon Islands Air Mail Letter Card

Figure 2 Australian Formular Aerogramme used in 1955 at the 8d Rate to the USA

Figure 3 Australian Formular Aerogramme used in 1961 at the 9d Rate to the USA

Ian McMahon



ing an adhesive stamp to be affixed before use. Forms known used in the British Solomon Islands include forms similar to the Australian 1945-50 7d airletters (on grey or blue paper), the 1954-59 10d aerogrammes with a border comprised of red or blue lozenges and AEROGRAMME in red with Figure 2 showing a formular aerogramme (unstamped version of ACSC A8) used in in 1955 at the 8d rate to the USA, and the 1959-60 aerogrammes with 'AEROGRAMME By Air Mail Par Avon' in blue at left and a border of red and blue lozenges (Figure 3 shows an example (unstamped

version of ACSC A11 with red instructions 'FOLD FLAPS BEFORE MOISTENING ADHESIVE' on writing Panel) used in 1961 at the 9d rate to the USA.) The 1960 issue is also inscribed 'Overseas Service' (Figure 4).

Formular airletters inscribed 'BRITISH SOLOMON ISLAND PROTECTORATE' were also used. Figure 5 shows an example CTO in 1951. There were a number of printings of these forms with Figure 6 showing a mint example with 'BRITISH SOLOMON ISLANDS' 43 mm in length rather than the 41 mm shown in Figure 5.

Private unstamped aerogrammes required approval by the post office but standard British forms seem to have been accepted. Figure 7 shows an Apsley form used at the 8c rate to Australia in 1966 while Figure 8 shows an Apsley form used in 1967 to Hong Kong by the Philatelic Section of the Comptroller of Posts and Telecommunications, GPO Honiara providing advice to a stamp collector 'The best method of payment is my bank draft, please do not send money orders as the 'advice' part much too long to get to us". (The Post Office would usually send the money order advice by surface mail).

An example of a private aerogramme with Solomon Island Post Office approval is shown in Figure 9. The form has been used to Brisbane in 1991 paying the 40c rate. The reverse of the form (Figure 10) is inscribed 'Approved by the Solomon Island Post Office for posting in Solomon Islands to overseas or inland addresses. Solomon Islands Post Office authority No 1.'

The first stamped aerogramme was issued in

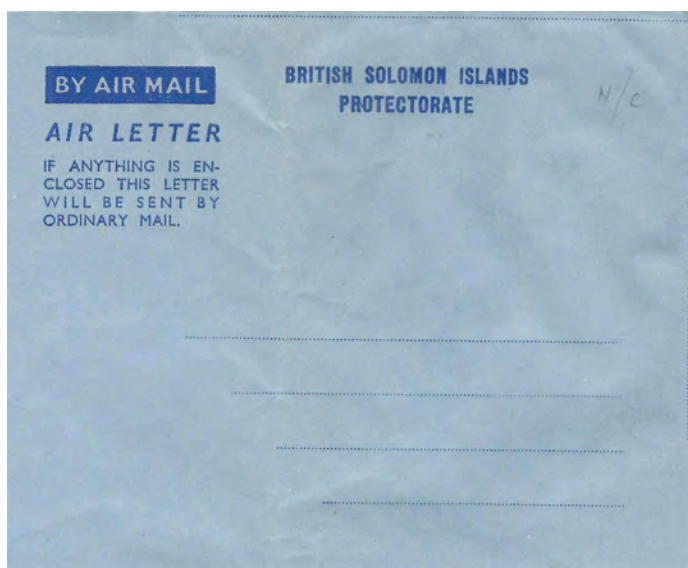


Figure 4 Australian Formular Aerogramme with 'Overseas Service'

Figure 5 British Solomon Island Protectorate Formular airletter, Heading 41 mm.

Figure 6 British Solomon Island Protectorate Formular Airletter, Heading 43 mm.

Postal Stationery

1969. The 8c stamp shows a man fishing a night using a light to attract fish and a multipronged spear (Figure 11). The stamp has been impressed on a 'B & P Aerogramme Form'.

The Islands became independent in 1977 when the country's name was changed to Solomon Islands. The first stamped aerogramme after independence was not issued until 9 September 1983 when a 25c aerogramme was issued for the South Pacific Games 1983 (Figure 12) with the stamp area depicting runners. This form was also issued without the commemorative text (on 30 January 1984) and for Solomon Islands' first participation in the Olympic Games on 25 April 1984. A 40c aerogramme with the stamp depicting a Taro Beetle was issued on 16 November 1991 for PhilaNippon 91.

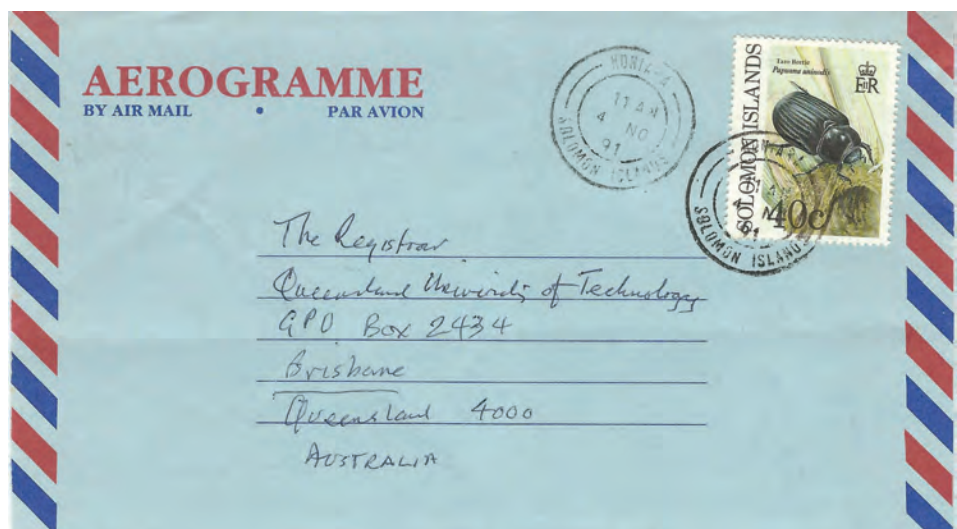
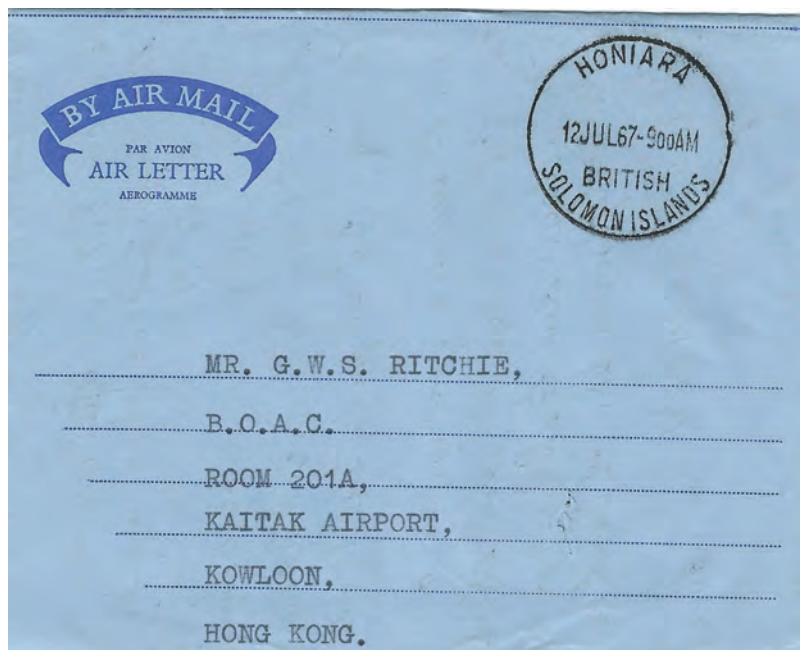
A larger format 40c aerogramme showing B737 400 aircraft was issued on 22 May 1992 (Figure 13). A version of this aerogramme was also issued on the same day for the World Columbian Stamp Expo 92 in Chicago.

On 7 August 1992 a 70c aerogramme was issued with a stamp showing an aircraft over Henderson's Field (the airfield on Guadalcanal) and Queen Elizabeth II in a design based on the 8d adhesive stamp issue of 1956. In addition, the aerogramme depicted a gull and the post office logo. A version of this aerogramme was also issued inscribed 'Guadalcanal 1942-1992' to commemorate the 50th anniversary of the Battle of Guadalcanal in the Second World War which was fought between 7 August 1942 and 9 February 1943 on and around the island of Guadalca-

Figure 7 Apsley Formular Aerogramme used at the 8c rate to Australia in 1966

Figure 8 Apsley form Used in 1967 to Hong Kong by the Philatelic Section

Figure 9 Formular aerogramme Used in 1991 at the 40c rate to Australia



Ian McMahon

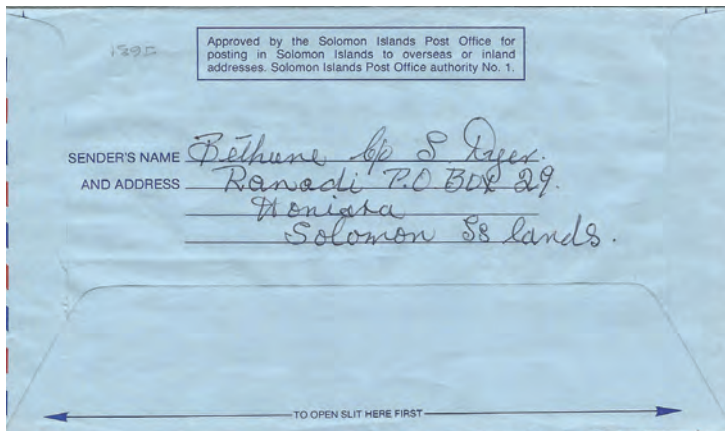


Figure 10 Reverse of Formular Aerogramme Approved for use by the Solomon Island Post Office 'Solomon Islands Post Office Authority No 1'.

Figure 11 1969 8c Aerogramme Showing a Fisherman

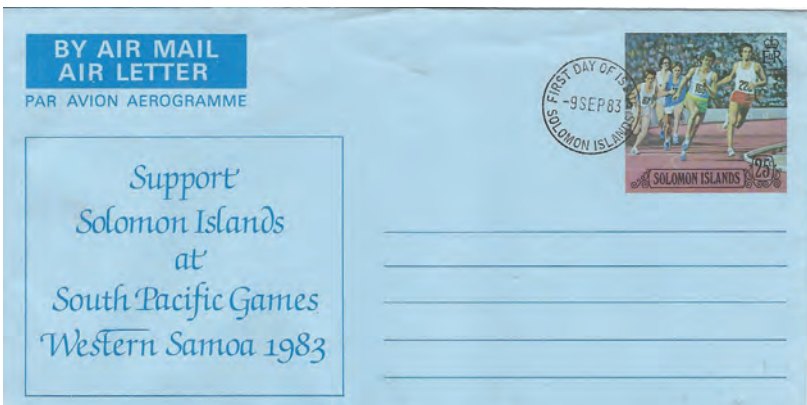
Figure 12 1983 25c Aerogramme for the South Pacific Games

Figure 13 1992 40c aerogramme showing B737 400 aircraft



nal with Henderson's Field playing a significant role in the battle.

Similar stamped airmail envelopes were also issued for the Guadalcanal anniversary. Two 50c envelopes (22 x 11 cm) were issued with a similar Henderson Field stamp design (Figure 14) with one of the envelopes having the Guadalcanal 1942-1992 anniversary logo. The envelopes are inscribed on the reverse 'Manufactured by D&L Philatelic Services Australia'. Two \$1.50 envelopes were issued in a large 25.5 x 18 mm size, again one envelope with and the other without the Guadalcanal 50th Anniversary logo. The two envelopes had a stamp design of an aircraft flying over Henderson Field based on the 8c 1967 adhesive stamp issued of the 25th Anniversary of the Battle of Guadalcanal.



Two aerogrammes showing orchids and epiphytes were issued for Indopex 93 and Taipei 93 on 29 May 1993 and 14 August 1993 Taipei 93 respectively. Two 'postage paid' aerogrammes selling for \$1 were issued in 1995 for 'Visit South Pacific Year 95 Solomon Islands' which described the Islands as the 'The eco Tourism Destination of the South Pacific; one depicting a Mask (Figure 15) and the other dancers and a hut.

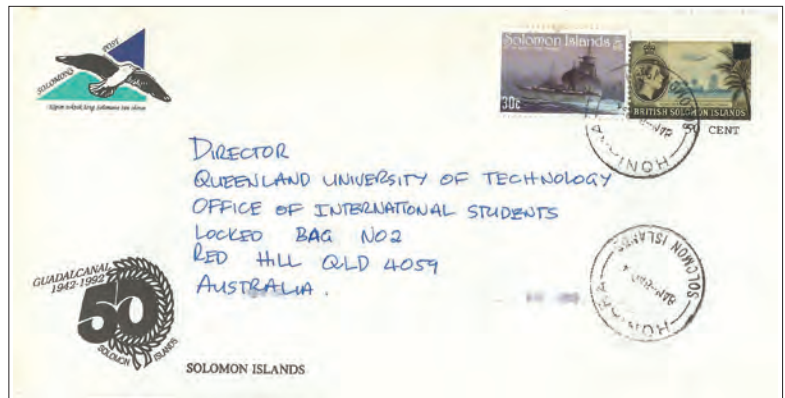
In about 1995, two 'Postage Paid' stamped envelopes (16 x 11.5 cm) depicting a gull were issued, one for internal use and the other for international use (Figure 16). Both envelopes had the stamp area inscribed 'Kipim toktok long Solomone ran olowe'. The airmail international envelope has red and blue chevrons around the border of the envelope.

An aerogramme showing two Nicobar Pigeons in the stamp area was issued on 4 June 1996 (Figure 17).

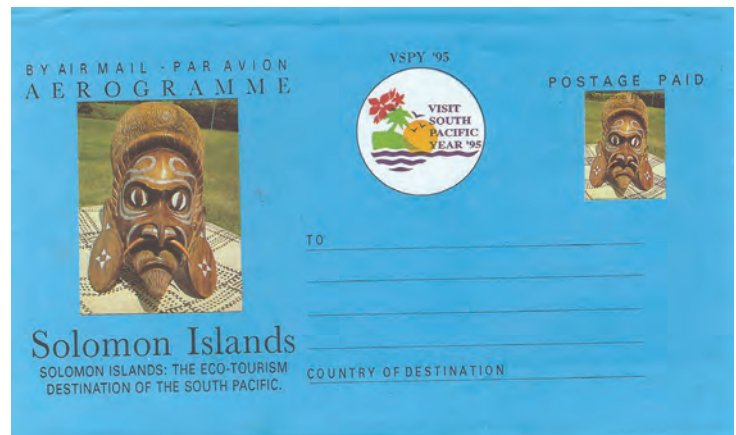


Postal Stationery

The Nicobar Pigeon is an unusual large pigeon with green and copper hackles. The tail is very short and pure white. The rest of its plumage is metallic green. The illustration on the left of the aerogramme also shows two Yellow-bibbed Lory, a largely red and green parrot with a black cap and a yellow 'bib'. The panel with the sender's address shows a view of Arofe, Makira.



The following issues were inscribed 'Solomon Post'. Two aerogrammes showing flowers were issued on 13 September 1999, \$1 Heliconia sp, 'a bush flower commonly found in most jungles of the islands' (Figure 18) and Dendrobium gouldii, 'a showy orchid flower most obvious and decorative of Solomon Island wildflowers'. The sender's address panel of the first shows a view entitled 'a typical Solomon Island Lagoon village, Nusa Banga, Roviana Lagoon, Western Province' while the later shows a view described as 'cascading stream in the central mountains of Guadalcanal'. A 'postage paid' (\$2) Christmas and 'Happy New Millennium' aerogramme was issued on 12 December 2000 with the indicium showing a candle and the address panel with an illustration of an island blowing a conch shell. On 2 January 2001 the aerogramme depicting Dendrobium gouldii was reissued for Hong Kong 2001.



In about 2000, two stamped envelopes (22 x 11 cm) inscribed 'Postage Paid' were issued with stamps designs similar to the views on the sender's address panel of the 1999 flower aerogrammes. The internal rate envelope stamp shows 'cascading stream in the central mountains of Guadalcanal' while the international rate envelope (Figure 19) shows 'a typical Solomon Island



Figure 14 50c Henderson Field Stamped Envelope

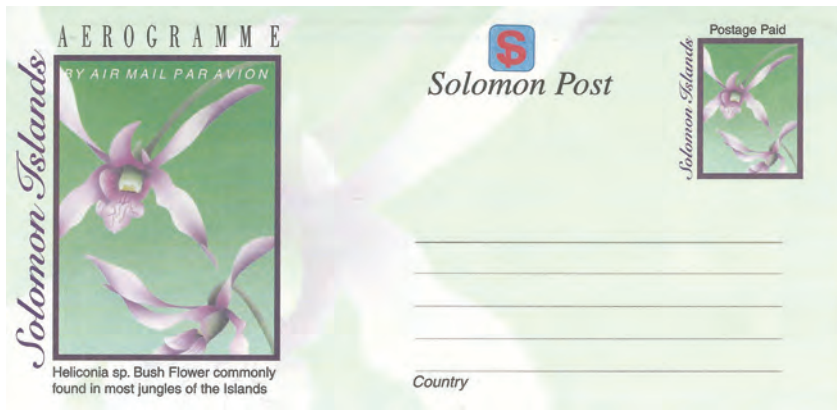
Figure 15 1995 Aerogramme for 'Visit South Pacific Year 95 Solomon Islands'

Figure 16 International Stamped Envelope Depicting a Gull

Figure 17 Aerogramme Showing Nicobar Pigeons and Yellow-bibbed Lory



Ian McMahon



Lagoon village, Nusa Banga, Roviana Lagoon, Western Province'. The latter envelope a border of red and blue chevrons.

In about 2010, five aerogrammes were issued with a stamp area featuring Solomon Island themes, the Solomon Post logo with an illustration on the left the same design as the stamp area. Similar designs were shown on the panel with the space for the sender's address. The five designs were the superb fruit-dove, a Tepuke Traditional canoe, an outrigger canoe, from the Temotu Province, Finsch's pygmy parrot (Figure 20), Indo-Pacific Sailfish and the Cardinal Honeyeater (Figure 21). The aerogrammes have no indication that postage has been paid, however, they apparently were sold and used as prepaid aerogrammes. The Indo-Pacific Sailfish was also the subject of a "Postage Paid" stamped envelope (25.5 x 18 mm) thought to have been issued about 2002.



The Finsch's pygmy parrot aerogramme is of particular interest as it is an example of an error of design on postal stationery as the parrot is incorrectly described as the Cardinal Honeyeater. The error is repeated on all three illustrations of the parrots on the aerogramme. Pygmy parrots are the smallest members of the parrot order. Finsch's pygmy parrot is characterized by a green head and neck (and a typical length of 9.5 cm. If you are aware of any aerogrammes issued by the Solomon Islands since this issue please let me know.

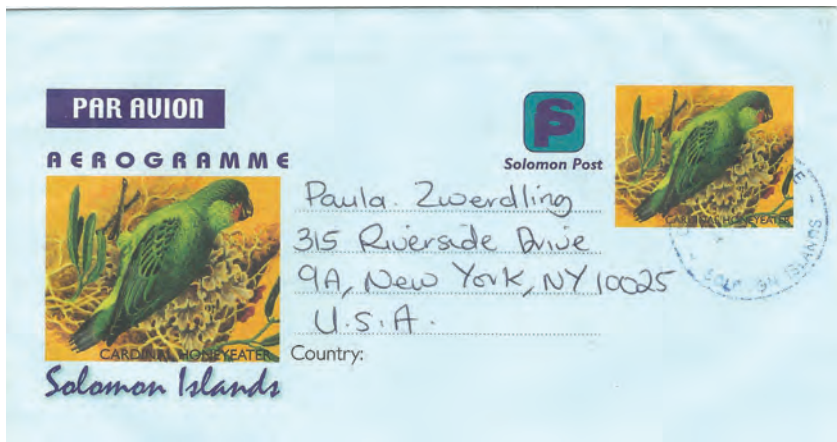
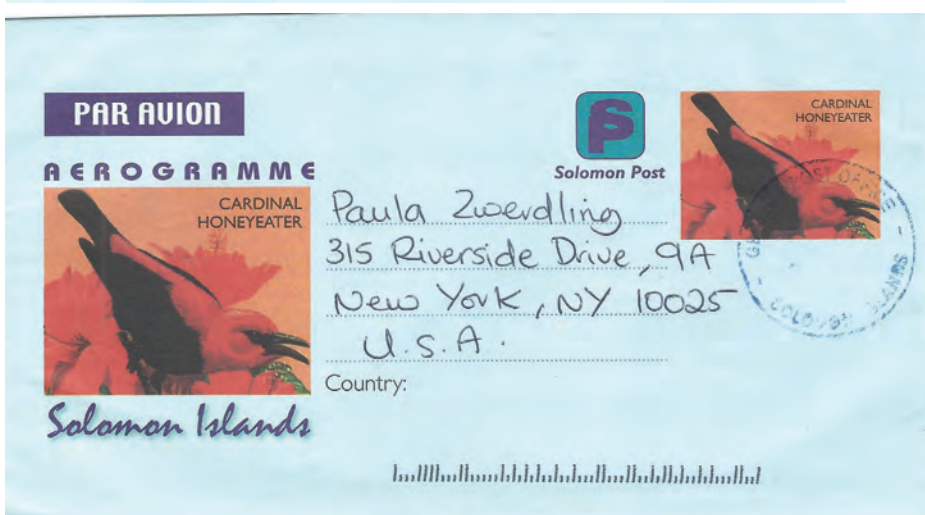


Figure 18 Aerogramme Depicting Heliconia Flower

Figure 19 International envelope Showing a Typical Lagoon Village

Figure 20 Aerogramme showing the Finsch's Pygmy Parrot, Described in Error as the Cardinal Honeyeater

Figure 21 Aerogramme Showing the Real Cardinal Honeyeater



Postal Stationery

Welcome to the postal stationery column for March 2022. This month's column looks at the production of the New Zealand Mitre Peak registered envelope, some interesting New Zealand stamped-to-order (STO) envelopes, a new Queensland Department of Public Instruction postcard, Torres Strait Headdresses stamped to order (STO) envelopes as well as new issues and postal stationery news.

2003 Torres Strait Art STO Envelopes

Martin Walker has provided information on a STO version of the DL window stamped envelope depicting the Torres Strait Shark Headdress (Figure 1) issued in 2003. The issue differs from the regular issue in that the pale blue shading of the original issue is omitted from the face of the envelopes but it is still present on the reverse of the envelopes. Apart from being slightly lighter in inking for both the blue and black, colours on the back is exactly the same as the post office issued DL window envelope (Figure 2). The DL envelope of this series also exists as a STO version with the yellow colour of the front of the envelope much paler than the regular issued DL envelopes.

New Zealand Dr Russell's STO Envelopes

Dr Russell of Christchurch was the first person to have their private envelopes stamped-to-order (STO) in New Zealand, submitting his first order on



Figure 1 Torres Strait Shark Headdress DL Window PSE Stamped-to-Order

Figure 2 Torres Strait Shark Headdress Regular Issue DL Window PSE

Figure 3 New Zealand 1d and 2d Queen Victoria Envelopes STO for Dr Russell

Ian McMahan



14 July 1900. *Postage Stamps of New Zealand Volume IX* describes the envelopes as “elaborate social size envelopes of deep grey paper and with a pink coating inside. Those seen have a pointed flap, at left, on which is printed a crest, in gold, with the motto, ‘Deo et Humanitati’.” The envelopes are embossed under the flap “Culleton Company 92 Piccadilly London”. Envelopes were stamped with a 1d Carmine Queen Victoria die (three printings, 2,500 envelopes in total), 2d Violet Queen Victoria (one printing 17 July 1900, 513 stamped) and 1d carmine King Edward VII (7 printings, 7494 stamped from 21 July 1904 to 29 September 1913). 1d and 2d Queen Victoria mint envelopes from Stephen’s Schuman collection illustrating the crest on the envelopes’ flaps are shown in Figure 3. Figures 4 and 5 show a 1d Queen Victoria envelope and a 1d King Edward VII envelope. Both envelopes were used in Christchurch in October 1904. The King Edward VII envelope has part of its flap remaining but it still has part of the crest remaining. The Queen Victoria envelope has the same crest but printed in red (Figure 6).

Master Dies for Printing 4d New Zealand Mitre Peak Registered Envelopes

In the Postal Stationery Column in the January 2022 issue of *Australasian Stamp News* I wrote about the preparation of dies for the Kiwi and Fantail designs. There was another design from the 1935 pictorial series which was also used on postal stationery, the 4d Mitre Peak design.

On 28 July 1935, the New Zealand High Commission approached De La Rue, on behalf of the Post and Telegraph Department

Figure 4 New Zealand 1d Queen Victoria Envelope STO for Dr Russell Used From Christchurch

Figure 5 New Zealand 1d King Edward VII Envelope STO for Dr Russell Used From Christchurch

Figure 6 Reverse of New Zealand 1d Queen Victoria Envelope STO for Dr Russell Showing the Crest in Red

Postal Stationery

in Wellington, asking if they would be prepared to produce a master die of the 4d pictorial stamp for the manufacture of stereos to impress registered envelopes. The letter goes on to say "It will be remembered that the 4d pictorial stamp is printed in two colours, but the master die is to be manufactured in one piece". The Government printed requests that it be cut deeper and the design made more open than is the case with the dies manufactured for the ½d and 1d impressions.

De La Rue offered to supply the die at a cost of £45 within four weeks after receiving approval to proceed. The quote was accepted on 9 July with the acceptance of the die being subject to the approval of the proofs by the Controller of the Stamp Section, Somerset House. Proofs to be supplied in triplicate. The six proofs were submitted on 7 August 1935 (Figure 7). Three of the proofs were from the 'original' die (A) and three were printed from a stereo ('B') made from the original and printed on envelope paper as used by De La Rue.

The Stamp Section, Post Office Stores Dept Somerset House raised concerns about the quality of the proofs. As a result, De La Rue on 14 August submitted six new proofs (Figure 8) printed on registration envelope paper on a small platen press and noted that 'the apparent defect which appeared on the previous die proof was due to bad

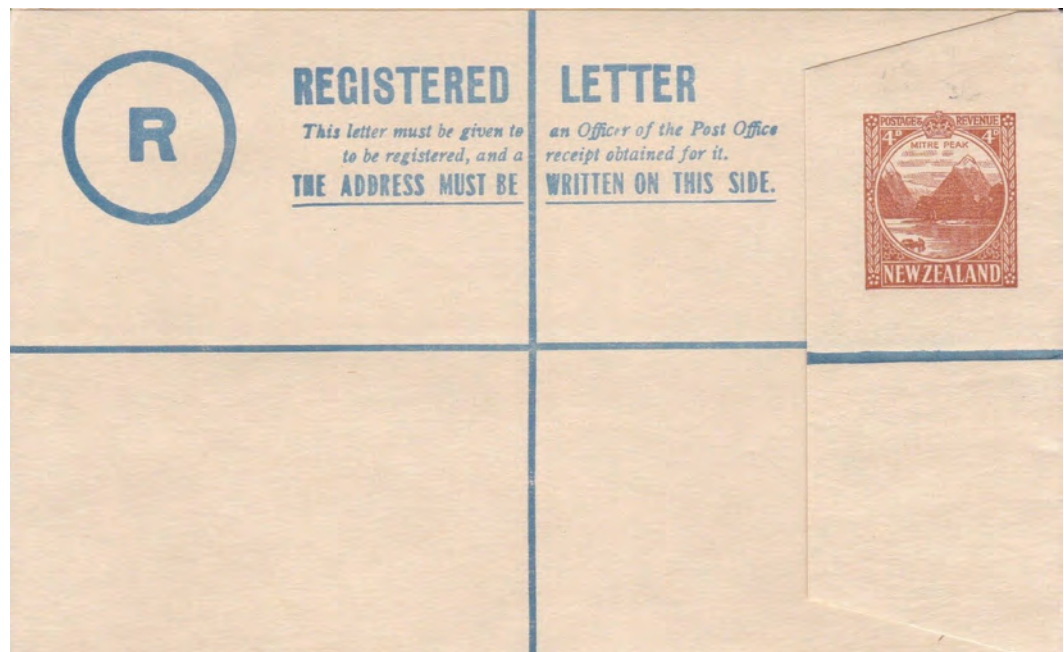


Figure 7 Proof of the New Zealand Mitre Peak Stamp 7 August 1935

Figure 8 Proof of the New Zealand Mitre Peak Stamp 14 August 1935

Figure 9 New Zealand 4d Mitre Peak Registered Envelope

Ian McMahon



Figure 10 View 'A Country School and Residence' on Reverse of a Queensland Department of Public Instruction Stamped Postcard

printing, the die is quite clear." The new proofs were accepted with the Controller of the Stamp Section agreeing that the defect in the earlier proofs was due defective printing. De La Rue forwarded the die to the High Commission on 21 August 1935.

The registered envelopes (Figure 9) were issued on 20 April 1936 with the indicium printed in chestnut brown and later in yellow brown. The die was inscribed postage and revenue although the stamp was not valid for revenue use.

Another Queensland Department of Public Instruction Postcard

Recently I was informed of another view on a Queensland Department of Public Instruction postcard. The View is 'A Country School and Res-

idence' (Figure 10) and the postcard is used in 1914 to the Head Teacher at Yengarie near Maryborough to acknowledge a request for the Works Department (Figure 11). The list of views recorded on stamped postcards now includes:

- A METROPOLITAN SCHOOL

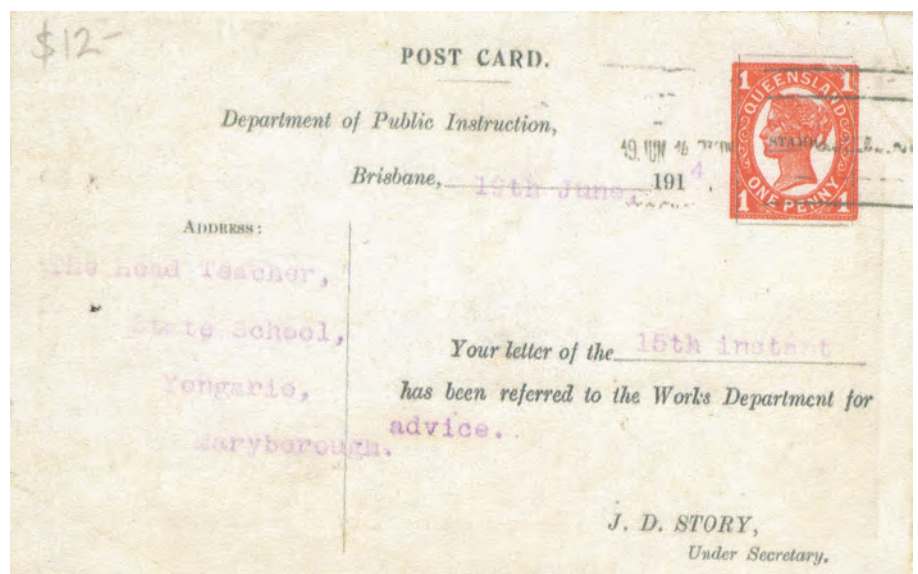


Figure 11 Queensland Department of Public Instruction Stamped Postcard

Postal Stationery

- A SUBURBAN SCHOOL
- A COUNTRY SCHOOL GARDEN
- A COUNTRY SCHOOL AND RESIDENCE

Additional views recorded on unstamped post-cards of this period (used 1912-15, with the picture title in small capitals and with J D Story as the Under Secretary of the Department) and which seem likely to also exist as stamped cards include:

- A COUNTRY SCHOOL SWIMMING POOL
- A SCHOOL GARDEN

John Douglas Story was Under-Secretary of the Department from 1906 to 1920. Story worked for the establishment of the University of Queensland and became its Vice-Chancellor from 1938 to 1959. The J. D. Story Administration Building at the University of Queensland and Brisbane's Story Bridge were named in his honour.

Australia Post New Issues

Australia Post issued a prepaid postcard (\$2.40) as well as domestic (\$1.35) and international stamped envelopes (\$3.70) for the Lunar New Year 2022 Year of the Tiger on 6 January 2022 based on illustrations by Chrissy Lau (Figures 12-14).

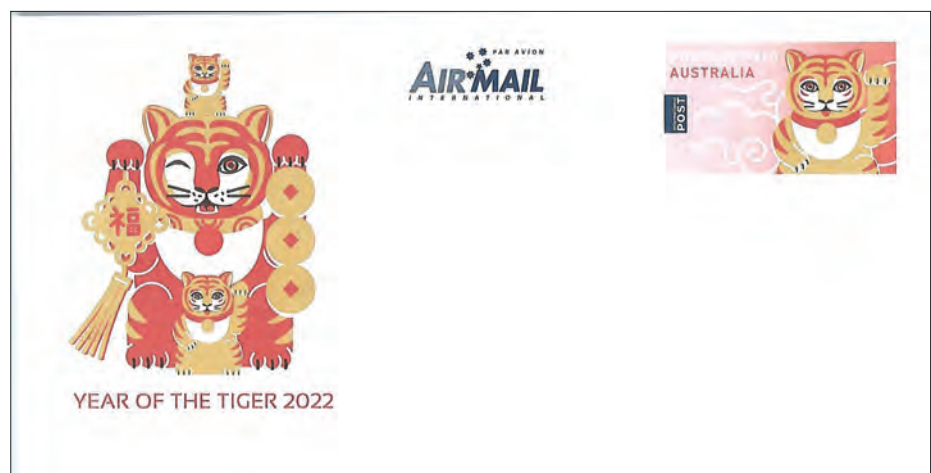
A further approximately 150 localised postcards have been reported (Figures 15 and 16). Details are contained in the February 2022 issue of the Postal Stationery Collector. Please note that these postcards are only available from the post office of issue and are not available from the Philatelic Bureau.

The Australian Abidjan design international reply coupon (IRC) has now been issued (Figure 17). There was no official issue date but the new IRC was first reported as available on 9 December in Melbourne.

Figure 12 Year of the Tiger Pre-paid Postcard

Figure 13 Year of the Tiger Domestic PSE

Figure 14 Year of the Tiger International PSE



Ian McMahon



CANUNGRA MAILCOACH
1911



Ilfracombe
Qld, 4727



Figure 15 Localised Postcard for Canungra

Figure 16 Localised Postcard Showing the Ilfracombe Post Office

Figure 17 Abidjan Design International Reply Coupon (IRC) for Australia

Postal Stationery Society of Australia News

The February 2022 issue of the Postal Stationery Collector includes articles on *Constant Die Flaws and Variations in The Australian 18-Cent Embossed Pre-Stamped Envelope*, *Jonathan Bear's advertising STO stationery from Victoria*, Book Reviews on *The 19th Century Issues Of El Salvador (1867-1900)* and *Tasmanian Postal Stationery*, by Malcolm Groom and Allen Shatten, 2021 and the details of the latest reported Localised Postcards.

The Postal Stationery Collector was entered into a number of literature competitions during 2021 and received the following awards: Vermeil at PHILANIPPON 21 (FIAP with FIP recognition), Large Gold at The Great American Stamp Show 2021, Chicago August 2021 (USA National Exhibition and Large Vermeil at 17th NZ National Philatelic Literature Exhibition 20-21 November 2021.

Exhibitions

BANGABANDHU 2021 was the first FIAP virtual international exhibition under the auspices of FIAP and judged with a FIAP jury. It was open from 10-30 December 2021. Three exhibits from Australian and New Zealand exhibitors that received large vermeil awards were *Post Bands and Wrappers of Canada* (Ian McMahon), *Postal & Lettercard Development in the Austro-Hungarian Empire* (Tony Griffin) and *Leeward Islands Postal Stationery* (Stephen Chivers).

The next Australian exhibition will be Canberra Stampshow 2022 Half National Exhibition, which will be held at Thoroughbred Park, 1 Randwick Road, Lyneham, ACT on 18-20 March 2022. Latest information can be found at <https://canberrastamps.org/> A National Postal Stationery class is being offered, and a face-to-face PSSA meeting has been scheduled for the afternoon of Sunday 20 March. A Half National Exhibition will be held at Newcastle (NSW) on 27-29 May 2022. For further information, please contact John Moore on moore.john@optusnet.com.au

Canberra Stamp Show 2022

Celebrating the *Philatelic Society of Canberra's* 90th Anniversary



WHEN: Friday 18 to Sunday 20 March 2022

WHERE: Thoroughbred Park, 1 Randwick Road, LYNEHAM, ACT

Join us for this **Half National Exhibition** of both National and State-level exhibits being held in the 90th year of the Philatelic Society of Canberra. **Resilience & Recovery** is the theme honoring the extraordinary resilience and capacity of Australians to recover from the natural disasters and pandemic that have impacted since our last Exhibition as well as various anniversaries in 2022.



A great range of overprinted and numbered **Stamp Show Souvenirs** commemorating the event are on sale. The popular imperf minisheet is back as is the **Supporter's Club Membership - Limited to 100 ONLY**. The subject of the abandoned stamp card this year is the Princess Elizabeth and Prince Philip 1952 visit which was also abandoned. All souvenirs are limited numbers so don't miss out.

Get the Order Form from the Canberra Stampshow 2022 webpage - canberrastamps.org

Several familiar **Stamp & Coin Dealers** will be available for your stamp and coin collecting needs including **Australia Post** and the **Royal Australian Mint**.

Attending will be the Australian Philatelic Federation, Abacus Stamps/Torsten Weller, AAA Stamps, Bexley Stamps, Brisbane Stamps, Burstamp, Coins & Collectables Victoria, Canberra Coin Club, Edlins of Canberra, Eureka Coins, Leski Auctions, Orange Stamps and Coins, Pacific Rim Online Auctions, Phillip Moorehouse, Phoenix



Auctions, Pittwater Philatelics, Renniks Publications, Richard Johnson (SA), Richard Juzwin, Shields Stamps & Coins, Wynyard Coin Centre, Canberra Philatelic Society.*



The Program includes a **Public Auction** at 6pm Friday night and the **Awards Dinner** in the fabulous *Silks Restaurant*, on Saturday night. Tickets for the dinner must be purchased in advance of the Stampshow.**

This year the **great new venue** is only 15 mins from the City Centre, near Exhibition Park and Canberra's Light Rail Track. Spacious with **free parking**, a 10-minute walk to the new light rail

station, an eight-minute drive to the popular Dickson Restaurant Precinct and Northbourne Avenue accommodation facilities, also all reached by light rail route.

We look forward to seeing you in 2022!

* Current 31 December 2021; **Use the souvenir order form on the PSC website - www.canberrastamps.org

In the event of disruption due to Covid 19, a contingency plan will be activated to ensure that the exhibition proceeds.

Postal Stationery

Welcome to the postal stationery column for April 2022. This month's column looks at the New Zealand pictorial postal cards up to about 1997 as well as a new book which covers New Zealand postal stationery from 1987 to 1998.

New Zealand Pictorial Postcards

The first pictorial postal cards issued by the New Zealand Post Office were two cards issued in 1897 (Figure 1). These cards had a multicoloured view (Figure 2) showing Waikite Geyser, Mt Cook, Mt Egmont and the Otira Gorge and was lithographed by Waterlow and Sons, London. The imprinted stamp was printed by the New Zealand Government Printer. The 1d cards were for use to addresses in New Zealand and the other Australasian colonies and the 1½d cards for use to UPU countries.

In 1899 1d postcards (Figure 3) were released with a picture printed in green at the lower left and typographed by the Government Printing Office. The postal cards were intended for 'Inland and Australia' use only. They were printed in sheets of 16 with six views occurring twice. Ten different scenic views are known:

- Princes Street, Dunedin
- Customhouse Square, Dunedin
- Queens Wharf, Wellington
- Where the Māori Loves to Roam
- Cathedral Peaks, Manapouri
- Lake Manapouri
- Wanganui River (horizontal view)
- Wanganui River (vertical view)
- Bealey Terrace, Canterbury
- Galatea, Auckland.

The six views which occur twice on a sheet are Cathedral Peaks Manapouri, Wanganui River (vertical view), Wanganui River (horizontal view), Queen's Wharf Wellington, Bealey Terrace Canterbury, and Where the Māori Loves to Roam.



Figure 1 1887 1½d International Postal Card

Figure 2 Coloured View on the Reverse of the 1897 Postal Cards

Figure 3 1899 1d Green Postal Card with Vertical View, Wanganui River

Ian McMahan



Figure 4 1900 1d Brown Postal Card with Boer War View, A Refresher Newtown Park, on Cream Card.

Figure 5 1901 International Postal Card with View, Manchester St, Christchurch

Figure 6 1913 1/2d Auckland Exhibition Postal Card

In 1900, New Zealand Post issued 1d postcards with a picture printed in brown at the lower left related to New Zealand's Boer War contingent (Figure 4). They were typographed by the Government Printing Office on three types of card stock: bright yellow, cream and light buff. Sixteen different views are known:

- First Contingent Entraining at Cape-town
- A Refresher, Newtown Park
- Breakfast in Camp
- Mounted Parade, Dismounted Parade
- In Camp Newtown Park
- Capt Davies First Contingent
- Officers Second Contingent
- First Contingent Starts for the Front
- Major Robin, First Contingent
- The Camp, Second Contingent
- Presents For Our Boys
- Some Riders in the Rough
- Capt Madocks First Contingent
- Garden Party at Wanganui
- Good-bye New Zealand (Good-bye New Zealand in early printings)
- Watering Horses, Newton Park.

In 1901, as a result of the reduction in the postal rate to all members of the UPU from 1½d to 1d, cards for international use were issued with a view in brown at left (Figure 5). Seventeen different views are known:

- On the Taieri River
- Māori Bush, Taieri River
- Māori Leap, Taieri River
- John Bull's Head, Taieri River
- Humbug Reach, Taieri River
- Princes Street, Dunedin
- Dunedin Town Hall, Etc.
- Manchester Street, Christchurch
- Hereford Street, Christchurch
- Cashel Street, Christchurch
- Cathedral Square, Christchurch
- Market Place, Blenheim
- Queen's Wharf, Wellington (street

Postal Stationery



scene)

- Queen's Wharf, Wellington (featuring ships)
- Lambton Quay, Wellington
- Hastings Street, Napier
- Queen's Statue, Auckland

½d (Figure 6) and 1d cards were issued in 1913 for the Auckland Exhibition which was a world's fair held in Auckland Domain, Auckland in 1913 and 1914. The reverse side of the cards had one of 20 different views of Auckland (Figure 7). The views are mostly commonly found in black on the ½d postcard and purple-brown on the 1d. However, they are also known in greenish blue on both vales and in black on the 1d and purplish brown on ½d cards. The known views are:

- Fish-ponds and Entrance to the Exhibition
- Auckland Domain, showing Hospital



Figure 7 1913 Auckland Exhibition Postal Card with View, Main Entrance to Auckland Exhibition in Black

Figure 8 Stampex '83 24c Promotional Card

Figure 9 Front of Postal Card with a View of the Pied Stilt from the Threatened Bird Issue on Reverse

- Chief Post Office (Building on Left), Auckland
- Yachts on the Auckland Harbour
- Customs Street, Auckland
- Chief Post Office, Queen Street, from Ferry Buildings
- Queen Street, Auckland
- Auckland Harbour from Grafton Bridge
- General View of Exhibition from Fish-ponds'
- Albert Park, Auckland, showing Guns which were in Action at Waterloo
- Remuera and Auckland Harbour from One Tree Hill
- Corner of Shelly Beach, Auckland
- The Aquarium and Government Court, Auckland Exhibition

Ian McMahon



- Victoria Street, looking West
- Main. Entrance to Auckland Exhibition.
- Rangitoto, Harbour and City from Exhibition Buildings
- Kiosk, Auckland Exhibition
- Auckland Harbour
- Sunlight and Shadow, Auckland Domain
- Auckland City and Harbour from Grafton Bridge

A number of pictorial postcards have been issued which have been STO for New Zealand philatelic exhibitions. The first was a card for Panpex 77 with a 7c impressed Queen Elizabeth II stamp. Stampex '83 had a promotional card stamped with a 24c blue stamp (Figure 8) while Stampex '85 had two sets of 24c cards showing 8 views of Christchurch and 8 Antarctic views. The Christchurch views were also issued as 25c cards while all sets were issued singly and in booklets of 8 cards. Stampex '87 had a set of four 40c cards illustrated with birds on the address side as well as sets of 40c cards with views of the Dunedin Railway Station and New Zealand Trams.

In 1994, New Zealand Post began issuing pre-paid postcards with selected adhesive stamp issues (Figures 9, 10 and 11). The first of these was issued on 16 August 1994 and depicted wild animals. The first three issues of these cards were issued both as postcards and as maximum cards (ie with an adhesive stamp placed, and cancelled on the picture side of the card). Most later issues were only sold as maximum cards. The early sets of cards issued included:

- Wild Animals
- Night Lights
- Māori Languages
- America's Cup
- Christmas 1995



Figure 10 Reverse of Postal Card with View of a Mini

Figure 11 Reverse of Postal Card with View of Sunrise to Mark 1 January 2000

Figure 12 1995 Nuclear-Free Campaign Postal Card



Postal Stationery

- Māori Artifacts
- 1996 Olympics
- Centenary of Cinema
- Scenic Gardens
- Vineyards
- Trains
- Roses
- Scenes (1998)
- Favourite Felines
- Marine Life
- Popular Pets
- Rugby
- Scenic Walks
- Sailing
- Cars
- Threatened Birds

The most recent postal cards associated with adhesive stamp issues have been those associated with the Lord of Rings adhesive stamp issues.

An unusual postal card was issued by New Zealand to promote the Nuclear-Free campaign on 1 September 1995 (Figure 12).

A set of 20 pre-paid pictorial postcards were placed on sale prior to 1997. Costing \$1.80 each they pre-paid postage to anywhere in the world (Figures 13 and 14). A list of the scenes depicted is given below.

- 01 Mount Cook
- 02 Ocean Beach
- 03 The Remarkables
- 04 Pohutu Geyser
- 05 Southern Alps
- 06 Mount Ngauruhoe
- 07 Lake Matheson
- 08 Auckland City
- 09 Sheep and Lambs
- 10 Traditional Māori POI Dancers
- 11 Giant Gate Falls
- 12 Mount Egmont
- 13 Sheep Droving



Figure 13 1997 Postal Card with View of the Southern Alps

Figure 14 1997 Front of the 1997 Pictorial Postcard

- 14 Grazing Sheep
- 15 Definitive Stamp
- 16 Milford Sound
- 17 Routeburn Track
- 18 Common Dolphin
- 19 A Kiwi
- 20 Christchurch City

New Zealand Post's Products and Services - The First Eleven Years (1987 to 1998) by Colin Capill.

This book (Figure 15) covers the eleven-year period from which New Zealand Post was corporatised on 1 April 1987 until it was deregulated on 1 August 1998. This was a period of enormous innovation and technical change, when many postal experiments

Ian McMahon



Figure 15 International Registered Envelope

Figure 16 New Zealand Post's Products and Services - The First Eleven Years (1987 to 1998)

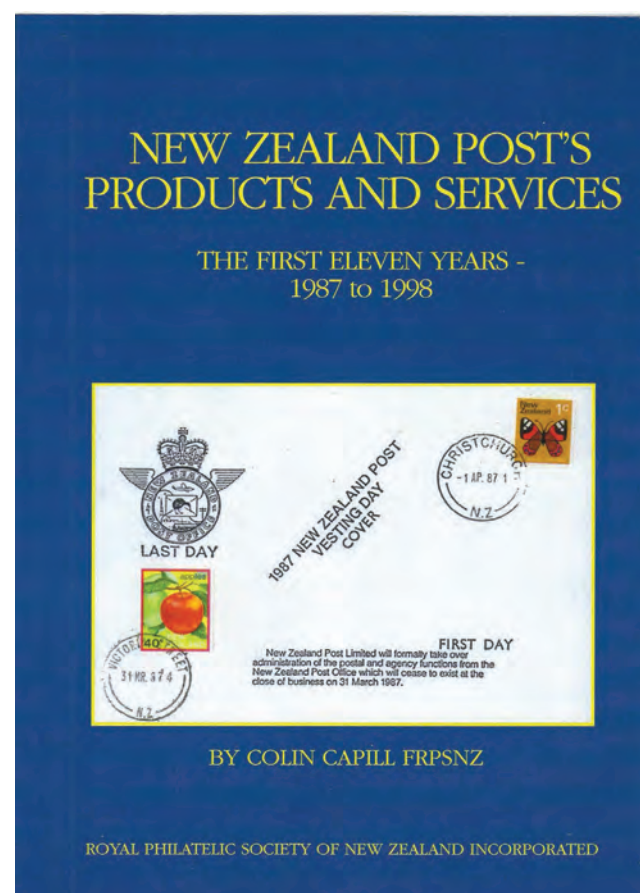
The other three appendices give a detailed listing of all the postage rates that applied during this period.

The book includes in the description of each service the various labels, forms and post office stationery used for the service. For postal stationery collectors, it also covers the postal stationery

issued during this period. Chapters are included on the aerogrammes (pre-paid and formular), registered envelopes (Figure 16), lettersheets and pre-paid courier envelopes and satchels. Postal cards are included in the coverage but are separated into different chapters, with almost a chapter for each issue including separate chapters on Christmas, computer-generated, Friendship, scenic, datestamp service and general postal cards as well as postal cards sold as maximum cards. Formular postcards issued by New Zealand Post have also been included. Stamped envelopes are also covered in a number of chapters based on the service including chapter on Boxlink, business, Fastpost, general (internal and international) and Easipost stamped envelopes. Parcel Post satchels are also covered.

While the postal history arrangement of the book provides a challenge for the postal stationery collector, the book provides a comprehensive account of the postal stationery of this period, a time of considerable innovation paralleling similar developments in Australia and other countries. The postal stationery from the period after 1998 to the present is similarly varied and is yet to be properly documented.

The book has been published by the Royal Philatelic Society of New Zealand and can be ordered from its website, <https://rpsnz.org.nz/page.php?pid=3>. Softcover: 333 pages. Weight: 1.4 kg. Cost NZD\$59 plus postage.



and trials were carried out. This book of 348 pages comprises 70 chapters and over 300 illustrations. It details a full range of services both national and international. Many little-known services are also covered. Four appendices are included, the first listing a brief chronology of the dates when a service, postage rate or product was first introduced.

Postal Stationery

Welcome to the postal stationery column for May 2022. This month's column looks at Australia Post new issue, the results of the postal stationery competitions at London 2022 and Canberra Stampshow 2022 and New South Wales Government Railways Pictorial Postal Cards.

January-March 2022 Prepaid Postcards

A single prepaid postcard was issued on 23 January 2022 to mark the 50th anniversary of the Buckle Up! Campaign (Figure 1). On 8 February 2022, five prepaid postcards were issued with the theme 'Times to Cherish' (Figure 2). The five postcards were entitled: Noughts & Crosses, Bouquet, Happy Birthday, Rubber Duck and Wedding Rings. Four prepaid postcards were issued on 22 February 2022 on the theme 'Our Beautiful Continent' (Figure 3). The four cards featured the Blue Mountains, the Flinders Ranges, Ningaloo Coast and the Gondwana Rainforests of New south Wales.

Three prepaid postcards were issued on 8 March 2022 to mark the 150 years of Sheepdog Trials in Australia (Figure 4). Sheepdog trials have been conducted in Australia for approximately 150 years. By the 1880s, sheepdog trials were becoming a popular sport at many agricultural shows across the nation. In the events of this competitive sport, one or two dogs

move three to six sheep around a paddock, fences, gates, yards or enclosures according to a handler's instructions. The dogs are judged on obedience and speed and the competitor is penalised if the sheep



Figure 1 Buckle Up 50 Years Prepaid Postcard

Figure 2 'Bouquet' Prepaid Postcard

Figure 3 Ningaloo Coast Prepaid Postcard

Ian McMahon



Figure 4 Brown-and-white Border Collie Prepaid Postcard



Figure 5 George Miller Prepaid Postcard

Figure 6 Adelie Penguins Prepaid Postcard



deviate from the prescribed course. Sheepdog trials are held in most states and territories and since 1943 the National Sheep Dog Trial Championships have been held annually in Canberra, with competitors and dogs from across the country competing for the coveted Duke of Gloucester Sash. The sheepdogs featured on the prepaid postcards were Brown and White Border Collie, Australian Kelpie and Black and White Border Collie.

On 15 March five prepaid postcards were issued depicting 'Australian Legends of Filmmaking' (Figure 5). The directors featured were Gillian Armstrong, Baz Luhrmann, George Miller, Warwick Thornton and Peter Weir. Australia issued four prepaid postcards on 22 March 2022 featuring Antarctic Penguins (Figure 6). One card depicted the emperor penguin and another emperor penguins with chicks. The other two cards depicted an Adelie Penguin and a group of Adelie penguins. Both of these penguins breed on the Antarctic continent.

Localised Prepaid Postcards

Australia Post continues to issue localised postcards. For example, the post office at Pentland, a small town near Charters Towers and 242 km south west of Townsville, has had four personalised postcards produced. Two of these were in a cartoon format (Figure 7 and 8) while the other two featured the post office and the Railway Station. (Please note that these prepaid postcards are only available from the Post Office of issue and are not available from the Philatelic Bureau).

PostPride Prepaid Postcards

PostPride is Australia Post's employee network of people who are interested in developing, support-

Postal Stationery

ing, or learning more about the Australia Post LGBTI+ community. The front of the PostPride postcard shown in Figure 9 and 10 is inscribed 'No stamp required. Australia Post supported mail'.

New South Wales Government Railways Pictorial Postal Cards

A handbook chapter and illustrated catalogue of these very intriguing postal cards is a recent addition to the *Postal Stationery of New South Wales Handbook* by Dingle Smith, Peter Kowald and Michael Blinman on the Postal Stationery Society of Australia's Society's website <https://postalstationeryaustralia.com/postal-stationery-of-new-south-wales-handbook/>.

A series of official pictorial postal cards (Figures 11-12) were used by the New South Wales (NSW) Government Railways Department from 1905 to 1912 to provide acknowledgement of action underway or receipt. They are the only official postal cards of NSW to use photographic images.

There is no available information on printing numbers of these cards, timing of printings or reasons for design changes over the eight-year period of their use. Indeed, little is known about the cards other than what can be observed on the small number of available cards. They are mentioned in some early catalogues and were reported by Carl Stieg [Stieg, C.L. (1984), 'Unlisted New South Wales Official Postcards' in *Postal Stationery*, May-June 1984 and



Greetings from Pentland
Queensland 4816



G'day from Pentland
Queensland 4816

Figure 7 Pentland General Store (View 1) Prepaid Postcard

Figure 8 Pentland Prepaid General Store (View 2) Postcard

Stieg, C.L. (1985), 'Unlisted New South Wales Official Postcards' in *Postal Stationery*, May-June 1985.]

Classification of the Railway Cards is complex as there are 23 different pictorial views, five different styles of dividing line on the address side, two different positions for the impressed stamp and one series

Ian McMahon

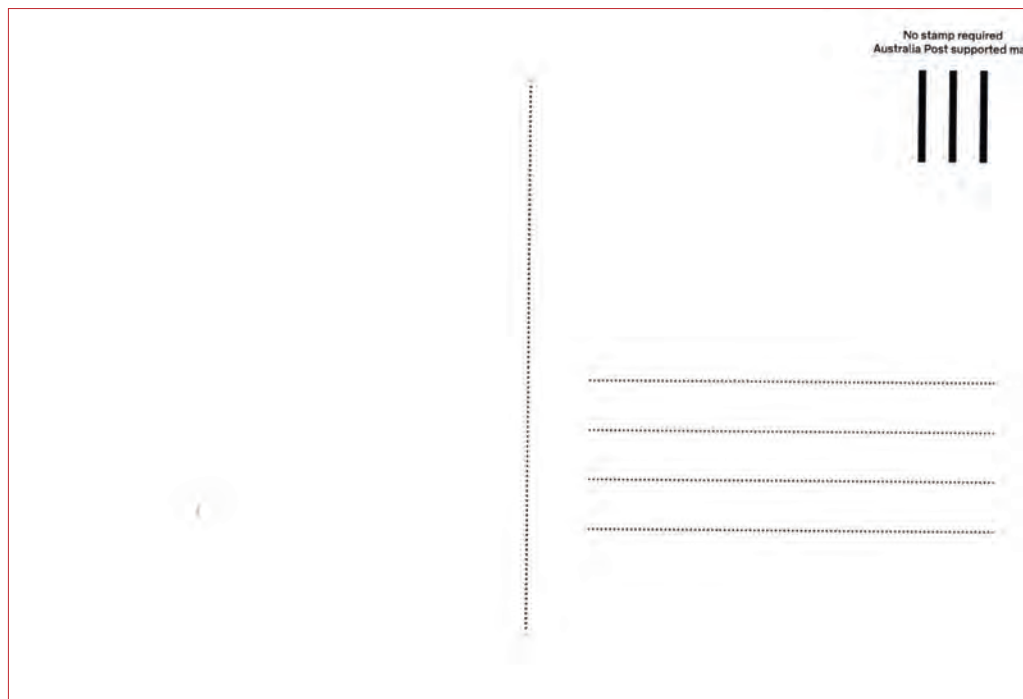


Figure 9 PostPride Postcard

Figure 10 Reverse of PostPride Postcard

without an impressed stamp.

The Handbook seeks to provide a comprehensive description of the known cards with an approach to how they can be classified. Observations are also made on how the cards evolved over the eight-year period of their use.

The Catalogue is arranged primarily according to the twenty-three pictorial images used with subdivisions and values according to the dividing line used on the card address side. This is a collecting area where new discoveries of pictorial images and dividing line combinations can still be made.

A section on Telegraph Forms has also been uploaded to the Handbook's website.

Postal Stationery at London 2022 World Stamp Exhibition

The postal stationery competition at London 2022 had 33 exhibits with the Best-in-Class Award going to Behruz Nassre-Esfahani (USA) with his exhibit *Persia, Qajar Postal Stationery 1876-1925* (Large Gold). Juhani Pietilä (Finland) received a Large Gold medal for his exhibit, *Finland Postal Stationery Envelopes 1845-1884* as did Hans van Dooremalen (USA) for *USA Postal Cards 1873-1913*.

Australian exhibitors did well at the exhibition with Michael Blinman receiving a Large Gold for *New South Wales Postal Stationery*, Nancy Grey

a Gold for *Australian Commonwealth Kangaroo Stationery*, Malcolm Groom Large Gold for *Tasmanian Embossed Stationery 1883 to 1912*, Frank Pauer Gold for *Australian Air Letters & Aerogrammes 1944-1965* and Dingle Smith Gold for *The Postal*

Postal Stationery

Stationery of Jamaica.

There was also a good range of postal stationery literature entered into the literature section of the Exhibition. These included John Courtis's *Analysis of Worldwide Postal Wrappers: Attributes of Postal Stationery, Postal History and Social Philately* (Gold), and *Postal Stationery Newspaper Wrapper Catalogue* by Jan Kosniowski (Large Vermeil) as well as books on Icelandic postal stationery, a second edition of the Guide to the Postal Stationery of Iraq, British postal stationery post cards, Slovakian postal stationery 1939-1945 and the 16th edition of the INTERITALIA specialised catalogue of the postal stationery of Italy.

The Exhibition also hosted a FIP Postal Stationery Commission seminar on exhibiting and judging postal stationery.

Postal Stationery at Canberra Stampshow 2022

There were eight postal stationery exhibits at Canberra Stampshow 2022 which was held from 18-20 March 2022 at Thoroughbred Park in Canberra. The Postal Stationery Society of Australia prize for the best postal stationery exhibit was won by John Dibiase (Figure 13) for his exhibit of Western Australia which also received a Gold medal. The other exhibits were *Indo-China Postal Stationery* (Paul Barsdell, Large Vermeil), *Jordan - The Postal Stationery* (Bernie Beston, Vermeil), *Victoria Envelopes Embossed with the 2d De La Rue die 1869 to 1885* (Mark Dise-

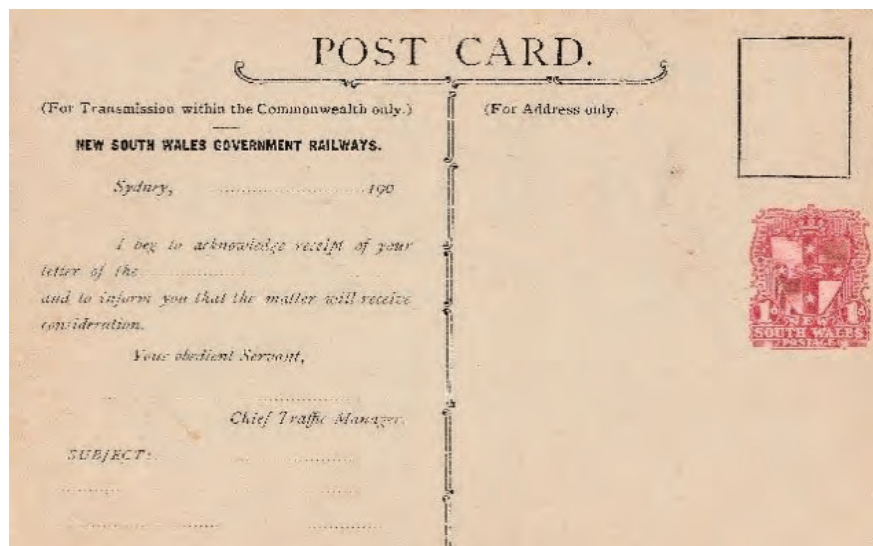


Figure 11 'Botanical Gardens, Sydney' Railways postal card

Figure 12 Reverse of the 'Botanical Gardens, Sydney' Railways postal card

Figure 13 John Dibiase, Winner of the PSSA Prize at Canberra Stampshow 2022

Ian McMahon



rio, Gold), Joan Orr *Australia Queen Elizabeth II Stamped to Order Postal Stationery* (Joan Orr Large Vermeil), *A Study of the Small 18 Cent Australian Embossed Pre-Stamped Envelope* (Peter Tozer, Large Silver), *Fiji - Air Mail Lettercards and Aerogrammes* (Paul Xavier, Vermeil) and *Bahrain KGVI Postal Stationery* (Mohamed Hassan Almarzooqi, Siler Bronze).

Postal Stationery Society of Australia News

The Postal Stationery Society of Australia held its first face-to-face meeting for two years at Canberra Stampshow 2022 which was attended by 10 people (Figure 14). The display was New Zealand postal stationery by Ian McMahon.

The next face-to-face meeting of the Society will be held at the Newcastle Stamps and Coin Show on 29 May at the Newcastle showground.

The March issue of the *Postal Stationery Collector* included articles on the use of postal stationery cut outs (Cut It Out!), *Constant Die Flaws and Variations in The Australian 18-Cent Embossed Pre-Stamped Envelope*, and two articles on Jonathan Bear and Victoria's Victorian Advertising Envelope (Figure 15-16).

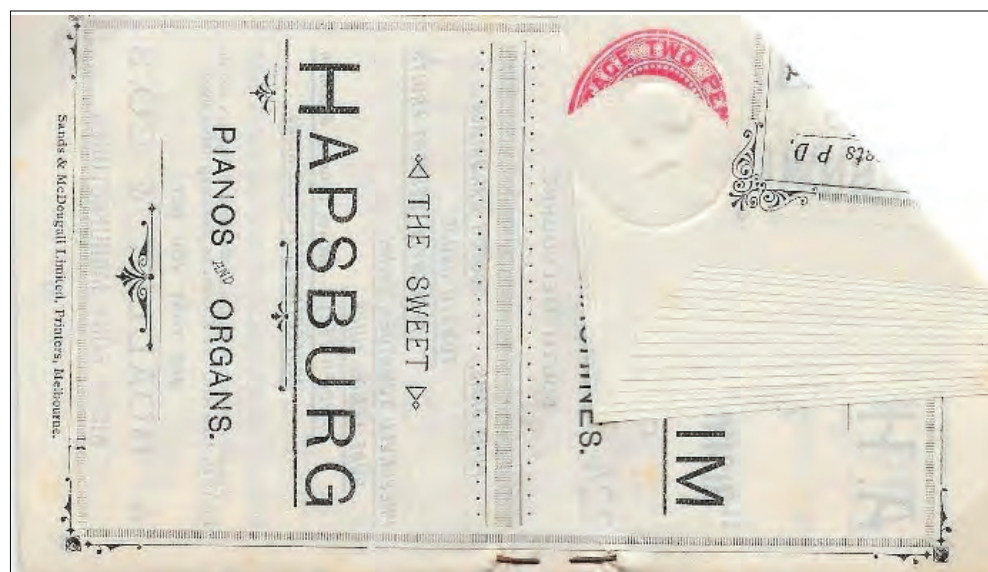


Figure 14 PSSA Meeting at Canberra Stampshow 2022

Figure 15 Victoria Advertising Envelope

Figure 16 Contents of Victoria Advertising Envelope

Postal Stationery

Welcome to the postal stationery column for June 2022. This month's column looks at the fins that can come from closely examining your stocks of pre-stamped envelopes, recent postal stationery literature and postal stationery news.

Australia and Papua New Guinea Pre-stamped Envelope Varieties

Joan Orr reports that whilst sorting a box of stationery looking for items, she noticed some anomalies amongst Australian and Papua New Guinea pre-stamped envelopes. She comments that many collectors fail to study the pre-stamped envelopes and other postal stationery of their country of choice. Some buy these, put them into a binder and consign them to the top shelf. These are available in quantity quite cheaply from dealers and club bargain tables, giving plenty of scope for study, with many printings, showing colour and rate changes within an issue, and Australia Post even numbering these on the back, and more recently under the back flap, giving an easy starting point!

The Australian PSE for the 4th Asia-Pacific Scout Jamboree was issued as PSE No. 016 on 19 December 1979; denomination 20c, the envelope shown in Figure 1 is the common version. Figure 2 is the only one she has seen with these colourings. It was designed by the Australia Post Graphic Design Section featuring details of the scouting movement on the reverse. On both of these there is a line of the luminescence below the indicia which shows clearly under UV light, giving more scope for study.

A 25t PSE was issued by Papua New Guinea (PNG) on 14th April 1999 for Milne Bay Province. It featured a Trobriand Yam House on the left and the indicium showed the Official Crest of the Province of Milne Bay (Figures 3 and 4).

The indicium had a very pale blue background

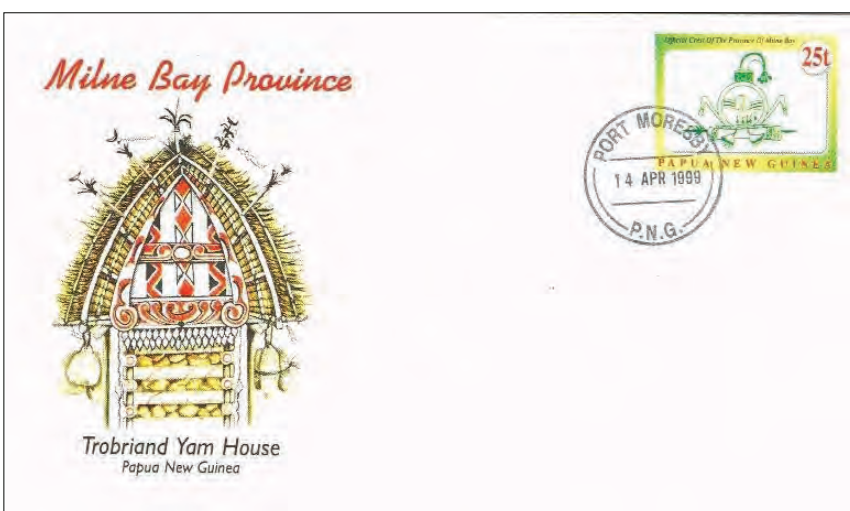
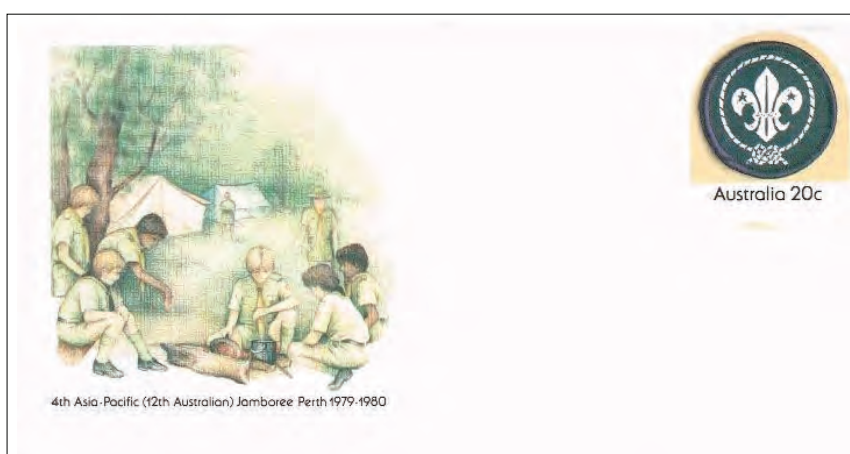
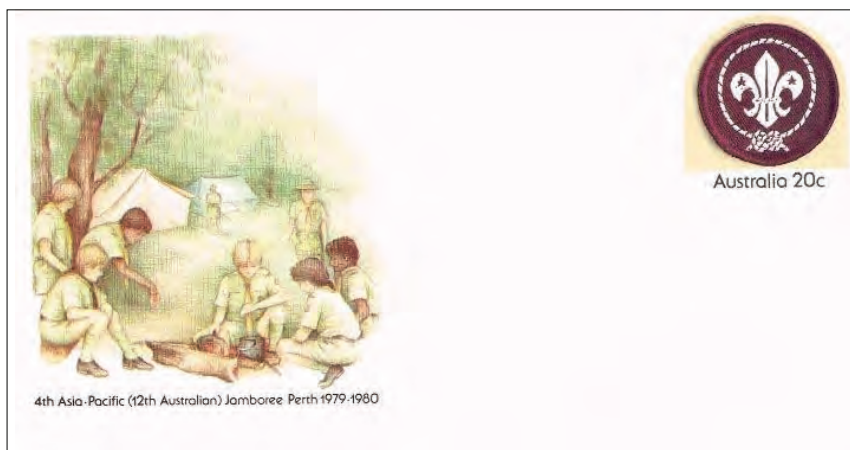


Figure 1 Australia PSE for 4th Asia-Pacific Scout Jamboree

Figure 2 Colour Variation of 4th Asia-Pacific Scout Jamboree PSE

Figure 3 Original Issue of 25t Papua New Guinea PSE for Milne Bay Province

on this first issue, reverse was printed in brown with advertising details of PNG's postage stamps and the PHILATELIC BUREAU's address in a box. Other details referred to the Yam House and its role in food

Ian McMahon



Figure 4 Reverse of Original Issue of 25t Papua New Guinea PSE for Milne Bay Province

Figure 5 Indicium of PNG Milne Bay PSE Showing Doubling of Red Colour

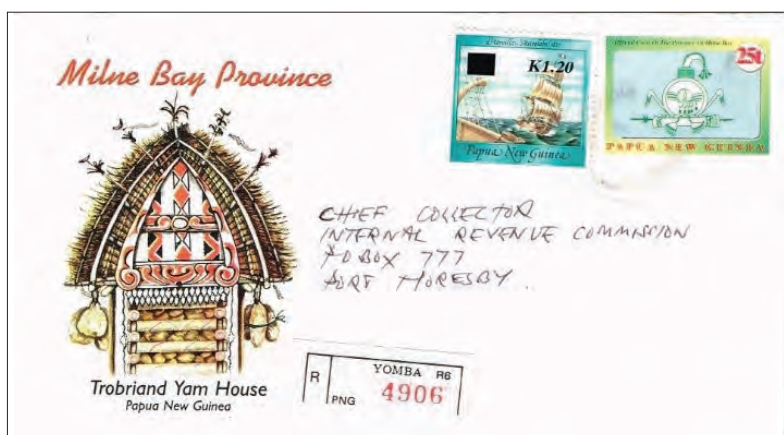
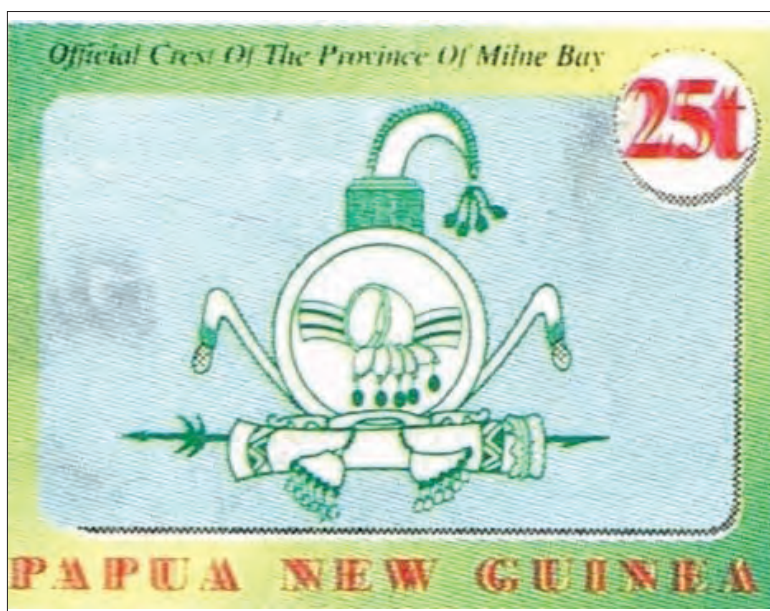
Figure 6 PNG PSE With Doubling of Red Commercially Used from Madang to Port Moresby 19 August 2000

July 1999. These can be found used as late as February 2000. Size is as first printing. As with all printings of postal stationery there are shades in both the front and reverse details.

A dark brown reverse appeared (my earliest date 22 August 1999) and can be found used until December 1999. During this time a spectacular *error* occurred. The red printing on the indicium – 25t and PAPUA NEW GUINEA printed double! (Figure 6) This item is commercially used from Madang 19 August 2000 to Internal Revenue Commission, Port Moresby 22 August 2000. Correct rate. Postage 25t + Registration K1.20. Note YOMBA registration label; provisional use (Figure 7).

During May 2000 (earliest 16th) a narrow envelope of the same design was issued (Figures 8 and 9). Printed on very white paper with layout as previous. Dimensions are 19 x 10.25cm. the difference in size showing at bottom left – 5cms instead of 10cms from lower printing to bottom edge of envelope. Reverse light brown as earlier printings. Same difference of size showing at bottom left.

In September 1999 a wide envelope, 22 x 11.2cms appeared (Figure 9 and 10). Presumably to accommodate A4 paper. The motif and indicium are the same size as previous, but the area at right from the indicium to envelope edge is 10.75cms and at left 2.9cms from 'M' of Milne. Reverse is dark brown and the same size as previous. Difference at right 4.75cms from address lines; at left 4.2cms from dotted box.



storage on the Trobriand Islands. Cream paper size 19 x 11.25cms.

The second printing is on whiter paper and the background on the indicium is blue. There is no date for the issue of this later printing, but the earliest date I have with the light brown printing on the back is 14

Nauru Formular Aerogramme

Paul Xavier has provided an illustration of a formular aerogramme (Figure 11) used from Nauru in 1984 to New Zealand. This formular aerogramme was used

Postal Stationery

in Nauru in the 1980s being sold by the Nauru Post Office. Mint copies could be ordered from the Nauru Philatelic Bureau and are not uncommon, however, properly used copies are seen much less often.

Localised Postcards Variations

I have previously mentioned in this column the prepaid 'localised' postcards being issued by Australia Post. These postcards are ordered by licensed post offices using an image supplied by the LPO. They generally are only sold at the LPO which ordered them and are not available from the Philatelic Bureau.

Some of the cards appear to have been reprinted using the same view but with minor variations of colour and/or cropping of the illustration. An example of the latter is the postcard with an aerial view of Bodalla shown in Figures 12 and 13. The illustrations are slightly differently cropped so that the card in Figure 12 shows the complete white truck on the right, well clear of the edge of the illustration. In the card in Figure 13 the truck is right at the edge of the illustration.

Jervis Bay Territory Prepaid Postcards

Three prepaid localised postcards have been recorded showing views of Jervis Bay in the Jervis Bay Territory (JBT). Figure 14 shows a postcard showing Jervis Bay and inscribed 'Jervis Bay JBT 2540'. The other two postcards are inscribed 'Jervis Bay Australia'.

The Jervis Bay Territory is a Commonwealth administered Territory located south of Nowra. The territory was excised from New South Wales in 1915 ostensibly to be used to provide a port for the new capital of Canberra. While not part of the ACT, most ACT laws apply to the JBT and government services are provided by the

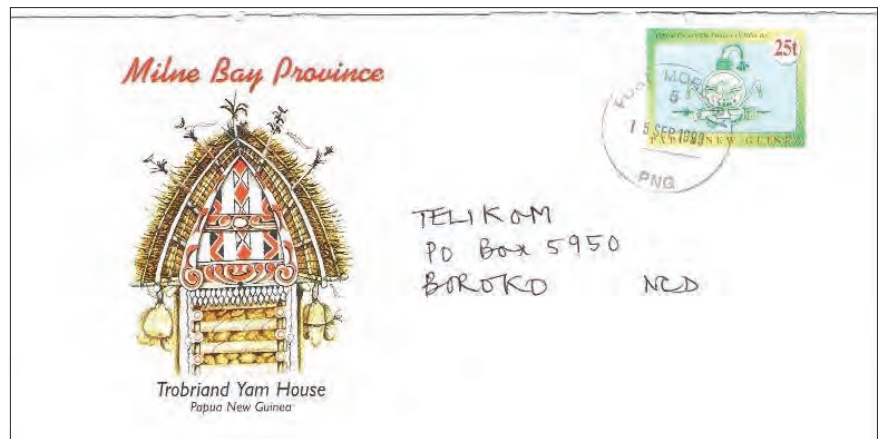
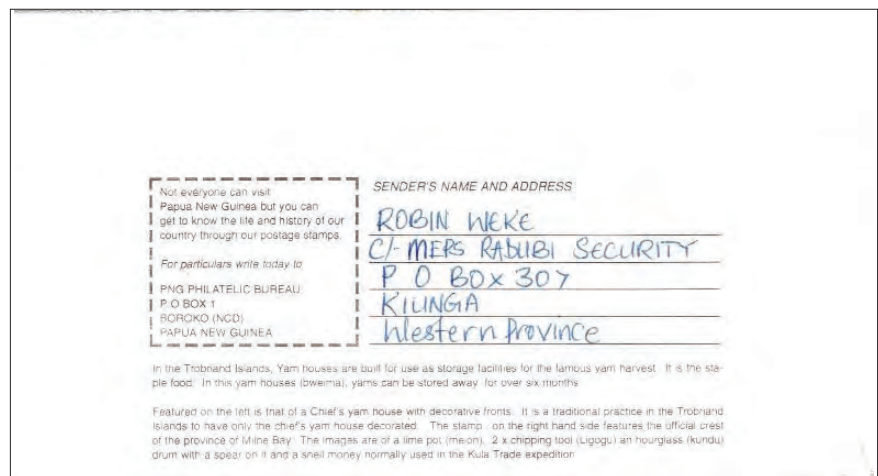
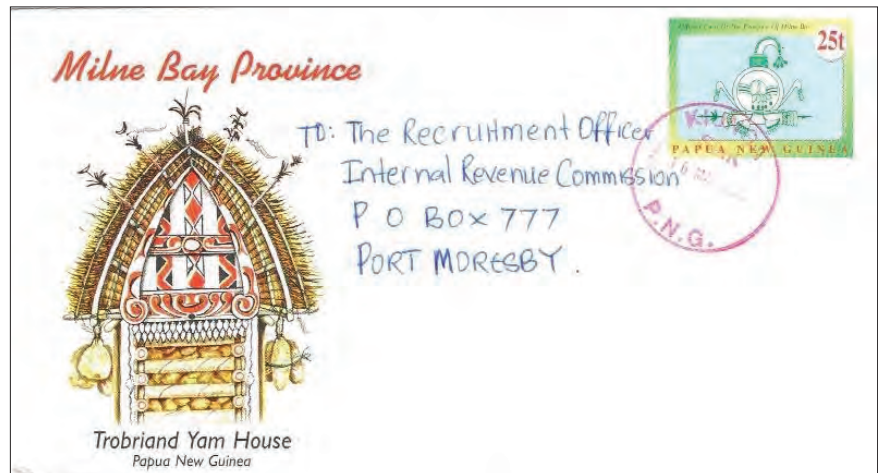


Figure 7 May PNG Milne Bay Narrow Envelope Sent from Kiunga 16 May 2000 to Port Moresby.

Figure 8 Reverse of May PNG Milne Bay Narrow envelope

Figure 9 PNG Milne Bay PSE September 1999 Wide envelope 22 x 11.2 cm

ACT along with New South Wales and the Shoalhaven Council.

Presumably, these the first postal stationery items issued by Australia Post primarily for issue in the JBT.

Ian McMahon

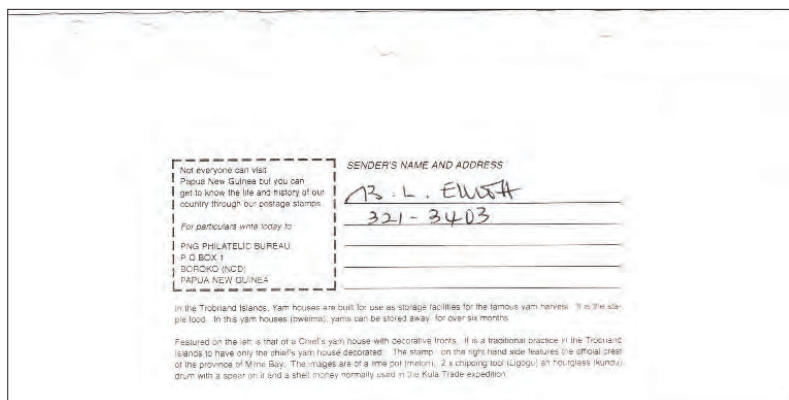


Figure 10 Reverse of PNG Milne Bay PSE September 1999 Wide envelope



Figure 11 Nauru Formular Aerogramme Used in 1984



Figure 12 Bodalla Localised Prepaid Postcard showing White Truck on Right Complete

pounds. Available from RPSL.

Handbuch der Schweizer Privatganzsachen 2nd Edition. (Handbook of Swiss PTPO postal stationery, Figure 15). This handbook covers Swiss Printed to Private Order (PTPO) postal stationery and includes an up-to-date catalogue. It contains: 50 pages introducing the field of Swiss PTPO postal stationery, 29 pages on Swiss PTPO postal stationery indicia with their catalogue numbers, 69 pages on PTPO clients, 362 pages of catalogue entries with the number of the PTPO, stationery items and the name of the PTPO client, revised prices, and additional information, and 28 pages of appendix containing tables on abbreviations, symbols and postal tariffs, as well as the relevant directives of the Swiss Postal Administration. The book comes in hard cover A4 format with 540 coloured pages permanently sewn into the binding. CHF 77.00 plus shipping costs. Please order directly from the publisher: Albrik Wiederkehr Email albrik-wi@bluewin.ch Rue du Carroz 5 CH-1278 La Rippe Switzerland.

Estudo Dos Aerogramas do Brasil: Nacionais, Internacionais e Servico 1974-2015 by Reinaldo R Macedo, Miguel R Magalhaes and Ygor P Chrispin

This book covers in detail the aerogrammes of Brazil issued from 1974 to 2015 including aerogrammes for national, international and official use and provides for each aerogramme provides details of the date of issue, the indicium, the value, dimensions, printer and other information. Both the front and rear of each aerogramme are illustrated in colour. Many of the aerogrammes depict Brazil's wildlife including macaws and monkeys (Figure 16). A presentation on Brazilian aerogrammes given by Reinaldo Macedo can be found on the Mi Oficina Philatelic Society YouTube channel at https://www.youtube.com/watch?v=aJGLc_GHgiM. Published 2021, 179 pages, hardbound, in Portuguese with an English summary and preface provided by Lars Engelbrecht RDP, Chairman of the FIP Postal Stationery Commission

Postal Stationery Literature

The production of books on postal stationery topics continues at a steady rate. Four new books covering aspects of the postal stationery of Iraq, Switzerland, Brazil and Canada are highlighted below.

Guide to the Postal Stationery of Iraq (2nd edition) by Clayton Rubec and Akthem Al-Manaseer, 149 pages, published by The Royal Philatelic Society London, 2022. The publication summarizes information about the usage of Iraqi postal stationery, in addition to that presented in the 1st edition of 2016. Retail price 25

Postal Stationery



Top right : Figure 13 Bodalla Localised Prepaid Post-card showing White Truck on Right Partially Cut-off.

Right : Figure 14 Jervis Bay Prepaid Postcard Inscribed 'Jervis Bay JBT 2540'

Above : Figure 15 Handbook of Swiss PTPO Postal Stationery

Below right : Figure 16 Brazil Aerogramme for Brasili-ana 183

from 2012-2018. If you are interested in this book, please contact Reinaldo Mace reinaldo_macedo@uol.com.br

Printings of the Flimsy Advice Forms for Canadian National Express, Canadian Pacific Express and Affiliated Companies by Robert Lemire. In the late 19th century and first half of the 20th century, Canadian express and railway company offices often used messages printed on regularly issued postcards either to provide notification that a shipment to the consignee's address had been received at the express company office, or to notify a shipper that a shipment had not been picked up. This book describes Canadian postal stationery items (multipart carbon-set forms) prepared for the same purpose (Figure 17 and 18)), printed to order for both Canadian Pacific Express (CP) and Canadian National Express (CNE). Private



Ian McMahon

OFFICE - BUREAU	DATE
CN Bellville	13 Apr 13
PRO ORD. NO.	NO. PIÈCES
785	2
DESCRIPTION AND MKS. - DESCRIPTION ET MRS.	WGT. - PDS.
86213	
W/B NO. AND DATE - NO ET DATE DE FEUILLE DE ROUTE	
104-1402	ap 12
SHIPPING POINT - POINT DE DÉPART	
Toronto	
SHIPPER'S NAME - NOM DE L'EXPÉDITEUR	
Walter Ford 774	
C.O.D.	
L.C.R.	
C.O.D. SERVICE CHARGES	
FRAIS DE SERVICE L.C.R.	
ADVANCE CHARGES	
AVANCES DE FRAIS	
EXPRESS CHARGES	
FRAIS DE MESSAGERIES	
COLLECT	
A PERCEVOIR	
TOTAL À PERCEVOIR	\$ 2.75
TOTAL COLLECT	
SEE REVERSE SIDE - VOIR AU VERSO	

Figure 17 Complete 4c Cameo Flimsy for Canadian National Railways With 'CNR' as Part of the Indicum

Figure 18 Used 4c Cameo Railway Flimsy for Canadian National Express

firms (Moore Business Forms, Drummond Business Forms, Autographic Business, Savoy, Doucet) carried out the printing. The Post Office Department supplied those firms with film negatives for (usually) dry offset printing, and the printing was done under supervision of Post Office Department employees. An entire flimsy form has several parts: a thin prestamped card on the front and one or two unstamped, printed sheets underneath. Carbon paper was bound into the form between the top card and the unstamped sheet(s). The stamped card was mailed to the shipper or the consignee, as appropriate. One of the unstamped copies was for the agent and another could be kept as an office copy. This book is the result of work by members of the Postal Stationery Study Group of the British North America Philatelic which resulted in a series of articles published in the Group's newsletter from 2017 -2021. Published 2021. 65 pages, spiral bound, illustrated in colour. Available from the author, Robert Lemire, rlemire000@sympatico.ca.

Postal Stationery Society of Australia News

The May 2022 issue of the Postal Stationery Collector included articles on Is This the Missing 18-Cent Die 8? [Australia 18c stamped envelope), Guyana Aerogrammes, The Use of Hungarian Postal Stationery Cards in Romanian Transylvania, The Inseparable Jonathan Bear – The Story of Victoria's Patent Advertising Booklet & Envelope (Part 2), One Indicum, Two Indicia, Three Indicia, Four [Wrappers with multiple indicia], and Analysis Of Worldwide Postal Wrappers: Attributes of Postal Stationery, Postal History And Social Philately by John K. Curtis – A Review.

The next face-to-face meeting of the Society will be held on 29 May 2022 at the Newcastle Stamps and Coin Show which will be held on 27-29 May 2022. This will be a celebration of 100 years of QANTAS, and there will be a Picture Postcard Challenge. Entries closed on 28 February.

ANPEX 2022, a National One Frame Exhibition, will be held in Adelaide on 20-21 August 2022. This will mark the Sesquicentenary of the Overland Telegraph Line from Darwin to Adelaide. Please note that there will be only 80 frames available, so it will be a case of 'first come, first served'. Prospectus and entry form are now available from David Figg on david.figg@internode.on.net .

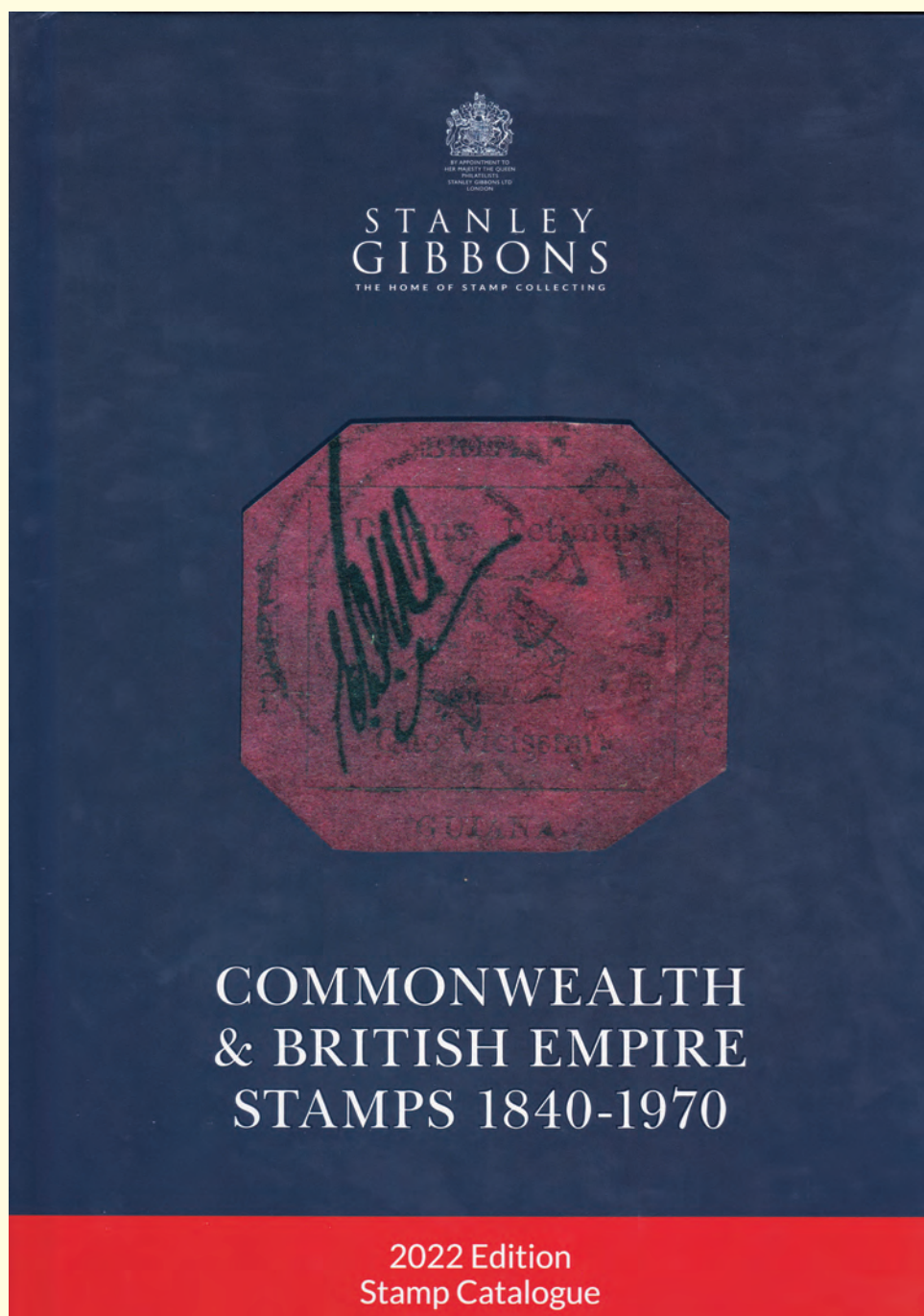
Hunfilex 2022

There was no postal stationery class at Hunfilex 2022, a specialised FIP exhibition held in Hungary in April 2022. Of note though was a Gold medal awarded to Andor Hodobay for his *Hungarian Postal Stationery Catalogue* and a Vermeil medal awarded to Luis Frazao for his exhibit of *The Postal History of the first Postal Stationery Issue of Portuguese Colonies*

Future International Exhibitions

Entries are now open for IBRA 2023 World Stamp Exhibition which will be held on 25-28 May 2022 at Essen Germany. Information about the exhibition can be found at <https://ibra2023.de>. Entries should be sent to me at ian.mcmahon4@bigpond.com by 16 September 2022. Cape Town 2022 IS A FIP exhibition which will take place 8 - 12 November 2022. Entries close on 15 May 2022 and should be sent to moore.john@optusnet.com.au.

NEW STANLEY GIBBONS CATALOGUE EDITION



Stanley Gibbons Commonwealth & Empire Stamps 1840-1970 2022 Edition

\$195 + \$8.95 Standard Shipping Australia Wide

STAMP NEWS MAIL ORDER

PO Box 1290, Upwey, Victoria, Australia

Ph: 0425 795 693 email: kevinmorgan2@live.com

Prices do not include Postage & handling



Postal Stationery

Welcome to the postal stationery column for June 2022. This month's column looks at the publication of the latest section of the Handbook of the Postal Stationery of New South Wales and the catalogues available for the other Australian colonies/states.

Handbook of the Postal Stationery of New South Wales - The Official Postal Cards of New South Wales

For some time, three collectors of New South Wales postal stationery, Michael Blinman, Dingle Smith and Peter Kowald, have been working on producing a handbook of New South Wales postal stationery. A large part of the Handbook and the associated catalogue have now been completed. As each section becomes available it has been placed on the Postal Stationery Society of Australia Website at <https://postalstationeryaustralia.com/postal-stationery-of-new-south-wales-handbook/>.

The most recent sections to be added to the website are the Handbook and Catalogue sections on the Official Postal Cards of New South Wales.

Michael Blinman & Dingle Smith write that most of the New South Wales official postal cards are marked 'O.S.' for 'On Service' and were restricted for use by government departments and agencies. Adhesive postage stamps overprinted OS were introduced by New South Wales about January 1880 and the first overprinted examples of 1d postal cards in mid-1891. The OS overprinted cards on appropriate 1d postal cards continued until June 1895 when the system ceased. Figures 1 & 2 show 1d Centennial postal cards overprinted 'OS' for the Medical Board of New South Wales and the Public Schools Cadet Force. Two types of OS overprint are listed in the catalogue although further

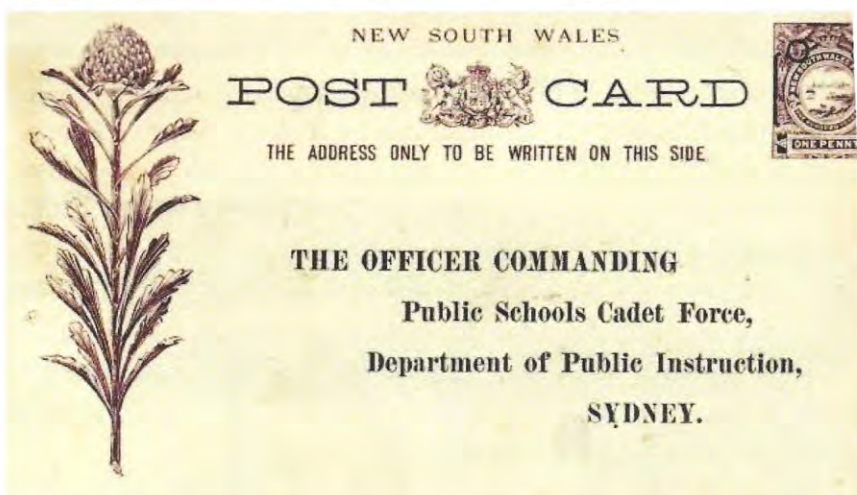


Figure 1 1d Centennial Postal Card Overprinted 'OS' for the Medical Board of New South Wales

Figure 2 1d Centennial Postal Card Overprinted 'OS' for the Public Schools Cadet Force

Figure 3 1881 Postal Card With 'OS' Overprint

sub-division of the overprints based on minor flaws is possible. Both mint and unused cards are relatively scarce, the latter because the cards were never available for use by the public.

The cessation of the use of OS postage stamps and postal cards left the Post office with large numbers of unused items. Collectors were anxious to obtain ex-

Postal Stationery

Welcome to the postal stationery column for June 2022. This month's column looks at the publication of the latest section of the Handbook of the Postal Stationery of New South Wales and the catalogues available for the other Australian colonies/states.

Handbook of the Postal Stationery of New South Wales - The Official Postal Cards of New South Wales

For some time, three collectors of New South Wales postal stationery, Michael Blinman, Dingle Smith and Peter Kowald, have been working on producing a handbook of New South Wales postal stationery. A large part of the Handbook and the associated catalogue have now been completed. As each section becomes available it has been placed on the Postal Stationery Society of Australia Website at <https://postalstationeryaustralia.com/postal-stationery-of-new-south-wales-handbook/>.

The most recent sections to be added to the website are the Handbook and Catalogue sections on the Official Postal Cards of New South Wales.

Michael Blinman & Dingle Smith write that most of the New South Wales official postal cards are marked 'O.S.' for 'On Service' and were restricted for use by government departments and agencies. Adhesive postage stamps overprinted OS were introduced by New South Wales about January 1880 and the first overprinted examples of 1d postal cards in mid-1891. The OS overprinted cards on appropriate 1d postal cards continued until June 1895 when the system ceased. Figures 1 & 2 show 1d Centennial postal cards overprinted 'OS' for the Medical Board of New South Wales and the Public Schools Cadet Force. Two types of OS overprint are listed in the catalogue although further

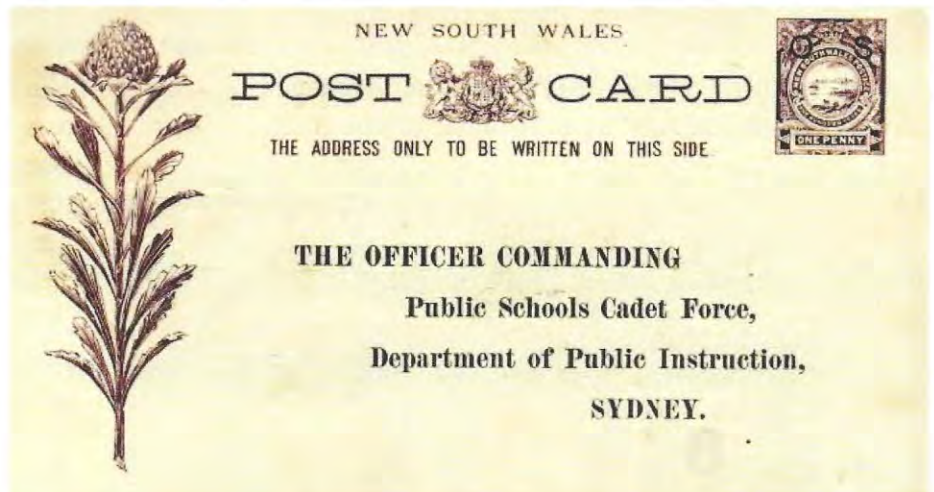


Figure 1 1d Centennial Postal Card Overprinted 'OS' for the Medical Board of New South Wales

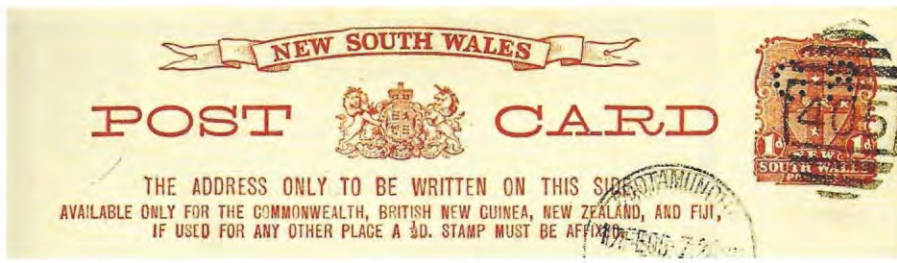
Figure 2 1d Centennial Postal Card Overprinted 'OS' for the Public Schools Cadet Force

Figure 3 1881 Postal Card With 'OS' Overprint

sub-division of the overprints based on minor flaws is possible. Both mint and unused cards are relatively scarce, the latter because the cards were never available for use by the public.

The cessation of the use of OS postage stamps and postal cards left the Post office with large numbers of unused items. Collectors were anxious to obtain ex-

Ian McMahon



Right : Figure 4 1895 Reprint with 'OS' Overprint, GPO Triple Oval Cancel And Specimen Overprint

Top : Figure 5 Postal Card Perforated 'GR' for use by NSW Government Railways

Above : Figure 6 1d Postal Card with OS NSW Perfin Used to South Africa with a Black Mourning Border for King Edward VII

amples of the material which had not been previously available for purchase by the public. The Government Gazette in July 1895 announced that surplus stock of the 1d OS cards would be available for purchase at face value '... on the understanding that they cannot be used for postage'. Further collector interest led the Post Office to reprint OS postal cards that had been issued at earlier dates. Complete sets of 'obliterated' stamps and postal cards were made available at £2 per set, well below the face value. A total of 1,000 sets were prepared, 900 of which were for sale to the public and cancelled with a triple oval 'NSW' and 100 with a triple oval 'GPO' for presentation purposes. Figure 3 shows an 1881 postal card with OS overprint while Figure 4 shows an 1895 Reprint with OS overprint, GPO triple oval cancel and specimen overprint.

The overprinted sets created a storm of protest from collectors and the philatelic press which result in the withdrawal of all the sets from distribution. Hull states

that the remaining sets for public sale were destroyed and those with the GPO obliterator additionally over-printed 'specimen'. In recent years a small number of the OS postal cards with the NSW cancel been seen with a similar specimen overprint. The details of the attempts of the Post office to satisfy collector interests provides a fascinating byway.

After the cessation of overprinted OS postal stationery, the use of government perfins was slowly introduced. The perfins were added by the NSW printer to both postage stamps and postal stationery. The first was the perfin GR, for New South Wales Government Railways, in late 1895 and remained in use until 1908 (Figure 5). From November 1902 Commonwealth Government Departments were required to use stamps and postal stationery with 'OS' perfin markings. This style of marking was then adopted for use by New South Wales Government Departments using an OS/NSW perfin. Figure 6 shows a 1d postal card with a ½d adhesive stamp with OS NSW perfin added for the overseas rate used to South Africa with a black mourning border for King Edward VII. Figure 7 shows a similarly used 1½d international postal card. The NSW government printer continued to provide both the State and Commonwealth perfins until their use finally ceased in 1913. Figure 8 shows the New South Wales

Postal Stationery

Fleet card with an OS NSW perfin.

The use of perfins in New South Wales is complicated due to the relatively widespread use of forged perfins often added to already used postal cards. Examples of forged perfins are given in the Handbook and the authors would especially like to acknowledge the help of Michael Drury and members of the Perfin Club of New Zealand and Australia for help in describing this material.

The final phase of New South Wales official postal card was for those with the heading OHMS, for 'On His Majesty's Service'. These appear to have been produced in small batches often in differing sizes for a wide range of government departments and ceased with the death of King Edward VII in 1911. Although the official postal cards were issued over a relatively short period of time the variety and background offer a varied and challenging topic to the postal stationery collector. Figure 9 shows a 1d postcard with OHMS overprint for the Ordinance Department.

The PSSA website has a preface to the New South Wales Handbook and Catalogue Listing including 'Background and Dedication', and an introduction to the Postal Stationery of New South Wales. The handbook is dedicated to the late John Bell from Goulburn as a tribute to his research on the Postal Stationery of New South Wales over many years. Between August 2006 and November 2011, he published thirty-one articles, listings and comments in *Sydney Views*. These were based on his own extensive collection of NSW postal stationery and exhaustive research of the NSW State archives. His research was enhanced by his 'discovery' in the NSW Archives of the Government Printing Office records from 1875 until January 1895. These comprise monthly printing records that list all the occasions that postal stationery items were printed. A treasure trove that greatly adds to the story of NSW postal stationery. The Handbook also builds on other past collectors of New South Wales postal stationery including Carl Stieg and Ed Druce.

With the completion of the sections on the Official Postcards the handbook now includes the following sections:

- Embossed Lettersheets and Envelopes
- Postal Cards



Figure 7 1 1/2d International Postal Card With A Black Mourning Border For King Edward VII

Figure 8 Fleet Postal Card with OS NSW Perfin

Figure 9 Card with OHMS Overprint for Ordinance Department

- Government Railways Pictorial Postal Cards
- Official Postal Cards
- Lettercards
- Wrappers

Ian McMahon

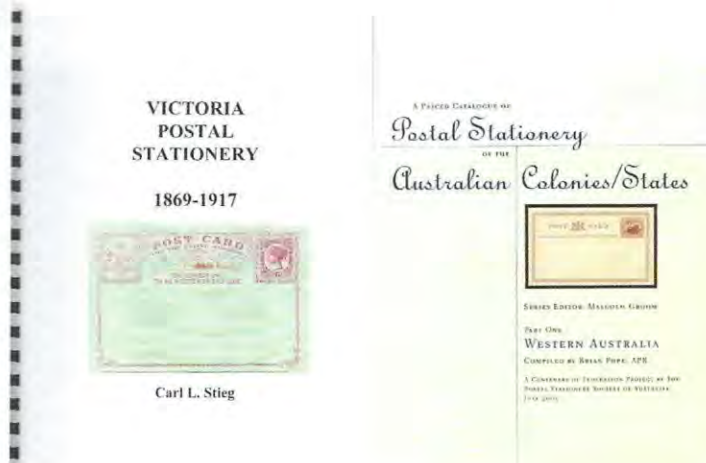


Figure 10 Victoria Postal Stationery, 1869-1917 by Carl Stieg

Figure 11 Western Australia by Brian Pope

Figure 12 Western Australia 1902 Reply Postal Card

- Registration Envelopes
- Telegraph Forms

For each of these sections there is a matching section in the Catalogue Listing which provides a traditional catalogue listing of New South Wales Postal Stationery.

This leaves the completion of sections on the envelopes including official and STO envelopes to complete the Handbook and Catalogue.

The authors would love to hear of any comments or corrections on their work and of any newly discovered and unlisted items of New South Wales postal stationery.

Australian States Postal Stationery Catalogues

When the Handbook and Catalogue of New South Wales Postal Stationery has been completed, there will be standard reference catalogues for four of the Australian states: Western Australia, Tasmania, New South Wales and Victoria. The four references are:

- *New South Wales: Handbook and Catalogue of the Postal Stationery of New South Wales* by Dingo Smith, Peter Kowald and Michael Blinman <https://postalstationeryaustralia.com/postal-stationery-of-new-south-wales-handbook/>
- *Tasmanian Postal Stationery* by Malcolm Groom and Allen Shatten. Published in 2021 by the Tasmanian Philatelic Society (<http://www.tps.org.au/>).
- *Victoria: Victoria Postal Stationery, 1869-1917* by Carl Stieg. Published in 2001 by Triad Publica-



tions (Figure 10)

- *A Priced Catalogue of the Australian Colonies/States: Western Australia* by Brian Pope published in July 2001 by the Postal Stationery Society of Australia (Figures 11 and 12)

While many collectors and dealers still continue to use the listings in Higgins and Gage (H&G or HG), that catalogue provides only very simplified listings of postal stationery. In addition, the catalogue has not been updated since the early 1980s and many of the listings are flawed. Collectors interested in the Australian states need to obtain and use the more specialised catalogues if they are to properly understand their subject. If you are interested in collecting the postal stationery of these states, I urge you to make use these references. The catalogues for Victoria and Western Australia are out of print and you will need to seek copies of the catalogues in the second-hand market.

For Queensland and South Australia, we await the completion of comprehensive catalogues of the postal stationery of these states. While there is no standard reference catalogue for Queensland there are a range of publications and articles on the subject which should be consulted by the collector. These were discussed in this column in the December 2020 issue of the *Australasian Stamps News*.

Future International Exhibitions

Entries are now open for IBRA 2023 World Stamp Exhibition which will be held on 25-28 May 2022 at Essen Germany. Information about the exhibition can be found at <https://ibra2023.de>. Entries should be sent to me at ian.mcmahon4@bigpond.com by 16 September 2022.

Postal Stationery

Welcome to the postal stationery column for August 2022. This month's column looks at current Canadian postal stationery, recent Australia Post issues and postal stationery news.

Current Canada Postal Stationery

While visiting Capex 22 in Toronto in June, I was able to visit a number of Canada Post outlets to see what postal stationery they were currently selling. There were some similarities in the range of postal stationery offered by Australia Post with the main items being prepaid express post items, stamped envelopes and prepaid postcards.

The Canada Post domestic express post service is called *Xpresspost*. Cardboard envelopes are issued for use to regional addresses (in the case of those sold in Toronto that is Ontario and Quebec, Next-day service to most urban centres, Figure 1) and to addresses anywhere in the country ('National', 2-day service to major urban centres, Figure 2). Envelopes are issued in three sizes (small 260 x 159 mm, medium 318 x 241 mm and large 394 x 314 mm) for both Regional and National use. Prices start at \$15.05 for regional delivery and \$22.70 for national delivery. There is also a range of bubble bags (Figure 3) in two sizes and again for both regional and national use. There have been many printings of these envelopes distinguishable for the current designs by printing numbers and the presence/absence of various logos on the address side of the envelopes. For example, the envelope shown in

Figure 1 Small Regional Xpresspost Envelope

Figure 1 Small National Xpresspost Envelope

Figure 3 Regional Bubble Xpresspost Envelope



Ian McMahon



Figure 4 Address side of Small Regional Xpresspost Envelope

Figure 5 National Priority Envelope

Figure 6 Small Prepaid National Parcel Box

Figure 4 has a printing number of 20-08 shown at the bottom right-hand corner.

For the purposes of these envelopes the regions are: Atlantic (Atlantic provinces), Central (Ontario and Quebec), Western (British Columbia and the prairie provinces), Nunavut East, Nunavut West, Northwest Territories and Yukon.

A faster service is provided by using Priority envelopes (Figure 5) which provides guaranteed delivery by the specified times. Envelopes are provided in two sizes and again for national and regional use (39.4 x 31.4 x 3 cm and 31.8 x 24.1 x 1.5 cm). Prices start at \$48.05.

There is a catalogue of Canadian express post and similar postal stationery available on-line at the British North America Philatelic Society (BNAPS) website at https://bnaps.org/ore/WaltonCovert-PSC/WaltonCovert-PSC_Contents.htm. The catalogue covers issues up to about 2016.

Canada Post also sells a range of prepaid boxes in three sizes (35cm x 26 cm x 5cm, 39 cm x 26 cm x 12 cm and 40 cm x 30 cm x 19 cm) for national use for parcels up to 5 kg (Figure 6).

Canada Post sells a range of prepaid postcards (Figure 7-8) primarily aimed at the tourist market. Like Australia Post, the range of postcards sold at each outlet varies considerably. One outlet had postcards primarily of views of Toronto and nearby areas of Ontario such as Niagara on the Lake while another had a broader range from other provinces including views of Vancouver, Winnipeg and Montreal. These postcards are produced in an arrangement with a private company, The Postcard Factory, and have been issued since 1997. Many hundreds of views have been issued since then with many changes in indicium, image format and in the inscriptions. All pay postage anywhere in the World (Figure 9). There can also sometimes be found for sale at

Postal Stationery

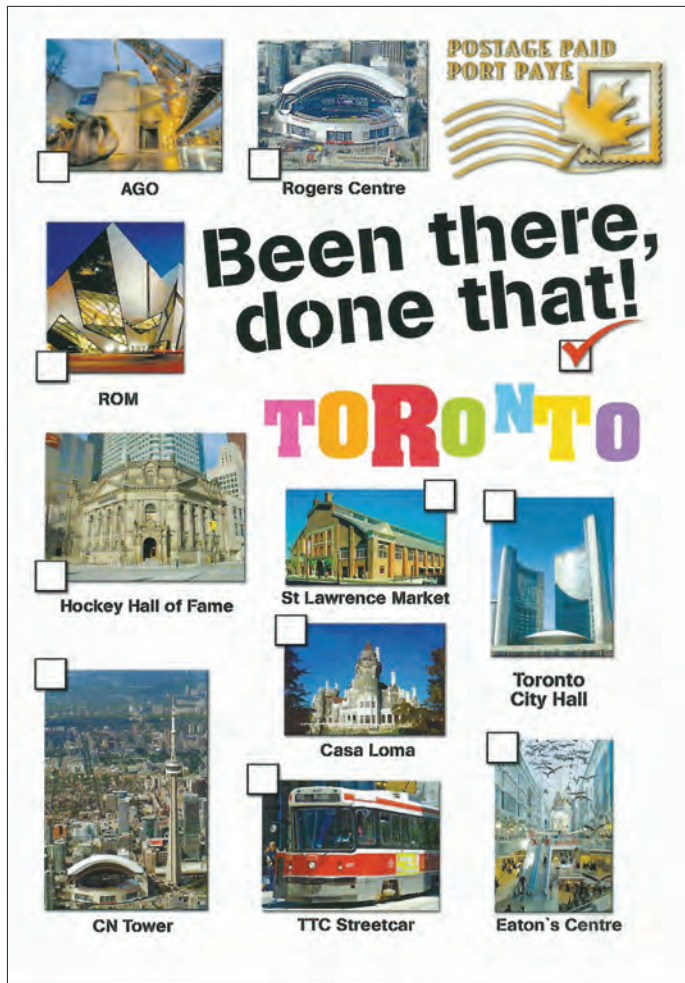


Figure 7 Prepaid Postcard with Views of Toronto

Figure 8 Prepaid Postcard for Vancouver

Figure 9 Front of Postcard Factory Prepaid Postcard



newsagents and stationery stores. Many of the views are also found on unstamped postcards produced by the Postcard Factory.

Other pre-paid postcards have been issued in conjunction with adhesive stamp issues. These usually have an indicium similar in design to the adhesive stamps. A set of five pre-paid postcards was on sale

at the Canada Post stand at Capex 22 with designs of travel posters (Figure 10-11).

Stamped envelopes are available. A pack of ten envelopes was available depicting flowers (Figure 12). These designs have been in use since 2012. Over that time the envelopes have been through many printings and printed by a number of printers. The printings can be identified by printing date usually on the reverse of the envelope and by the presence or otherwise of a barcode and the various logos on the reverse of the envelope (Figure 13). The current envelope was printed by Colour Innovations.

There is a comprehensive listing of these post-

Ian McMahon



Figure 10 Prepaid Postcard showing Poster for Canadian Pacific

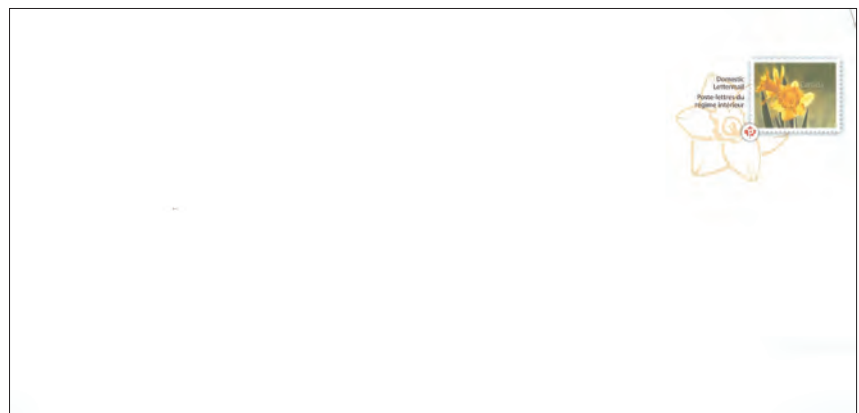
Figure 11 Royal York (Canadian Pacific Hotel) Post on Prepaid Postcard

Figure 12 Daffodil Stamped Envelope

Figure 13 Reverse of Daffodil Stamped Envelope showing Printing Number and Logos.

cards and other Canadian postal stationery in the Webb's Postal Stationery Catalogue of Canada Newfoundland (8th Edition, 2019) edited by Earle Covert and William Walton (Figure 14).

Postal Stationery at the Capex 22 International World Stamp Exhibition
 Capex 22 was an international one-frame exhibition held in Toronto from 9-12 June 2022. There were nineteen postal stationery exhibits. The best in class was won by an exhibit of the registered envelopes issued for use in British post offices in China. These envelopes are Hong Kong envelopes overprinted 'CHINA'. There were three exhibits from Australian exhibitors showing New South Wales Embossed Stationery 1838-1850, Victoria's



ordinary envelopes after Federation and Gold Coast One Penny Postcard of 1892 and Its's Usage. There were also two exhibitors from New Zealand showing King George V 1½ d lettercards and Japan New Year Lottery Greetings Cards. There are many postal

Postal Stationery

stationery topics which well suit a one-frame exhibit and it is certainly worth trying.

Australia Post Pre-Paid Postcards April - June 2022

Two prepaid postcards were issued on 5 April 2022 for the Queen's Platinum Jubilee and a single postcard on 26 April 2022 for the Centenary of the Country Women's Association. Three postcards were issued on 12 April 2022 under the theme 'Postcards to the Front' showing Kookaburras wearing the hats of the army, navy and air force.

Three prepaid postcards were issued on 3 May 2022 featuring Aboriginal Fibre Art (Figure 15) by Yolŋu women of Gapuwiyak in north-east Arnhem Land, Northern Territory. Represented on the stamps is art by Lucy Malirrimurruwuy Wanapuyngu, Mary Djupuduwuy Guyula



Figure 14 Bill Walton (right), Coeditor of the Canadian Postal Stationery Catalogue and Robert Lemire at Capex 22.

Figure 15 Fibre Art by Nancy Walinyinawuy Guyula Prepaid Postcard

Figure 16 River Mint Prepaid Postcard



Ian McMahon



Figure 17 Brush Turkey Prepaid Postcard

and by Nancy Walinyinawuy Guyula. On 24 May 2022, three prepaid postcards were issued showing 'bush seasoning' plants (Figure 16): Mountain Pepper (Tasmania lanceolata), River Mint (Mentha australis), and Lemon Myrtle (Backhousia citriodora).

Megapodes of Australia was the theme of three prepaid postcards issued on 7 June 2022. The cards feature the Australian Brush Turkey (Figure 17), a familiar bird of many East Coast cities, the Mallee Fowl found mainly in mallee habitat in western New South Wales and Victoria, and the Orange-footed Scrub Fowl, a bird of the northern tropics. A prepaid postcard was issued on 14 June 2022 titled 'In Memoriam: HRH Prince Philip'.

Postal Stationery at Newcastle 2022

There was no national postal stationery class at Newcastle 22 held at the Newcastle show-ground in May 2022. There were, however, two exhibits as part of a challenge between the 'Royal' Societies. Mike Smith

exhibited the postal Stationery of the Orange Free State which received a large gold medal and was a nominee for the Best in Show Award. It is an outstanding exhibit and I hope you took the opportunity to view it. Malcolm Groom exhibited Tasmanian Embossed Postal Stationery and received a Gold medal/

The Postal Stationery Society of Australia had a meeting at the exhibition which was attended by ten people who were treated to a display of Peter Kowald's New South Wales Postal Cards issued for use by the New South Wales railways presented by Dingle Smith (Figure 18).

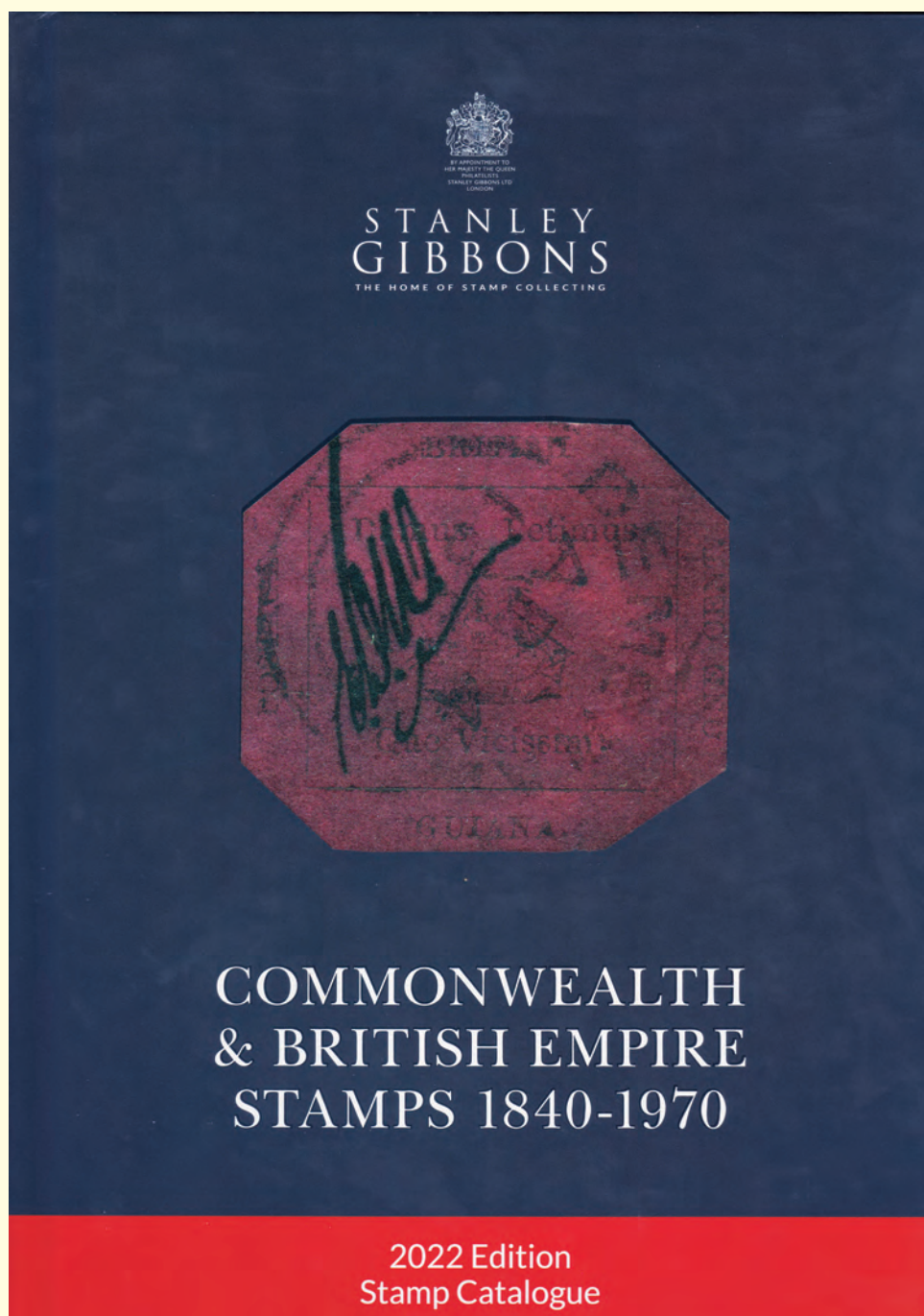
Future International Exhibitions

Entries are now open for IBRA 2023 World Stamp Exhibition which will be held on 25-28 May 2022 at Essen Germany. Information about the exhibition can be found at <https://ibra2023.de>. Entries should be sent to me at ian.mcmahon4@bigpond.com by 16 September 2022.



Figure 18 Attendees at the PSSA Meeting at Newcastle 2022

NEW STANLEY GIBBONS CATALOGUE EDITION



Stanley Gibbons Commonwealth & Empire Stamps 1840-1970 2022 Edition

\$195 + \$8.95 Standard Shipping Australia Wide

STAMP NEWS MAIL ORDER

PO Box 1290, Upwey, Victoria, Australia

Ph: 0425 795 693 email: kevinmorgan2@live.com

Prices do not include Postage & handling



Postal Stationery

Welcome to the postal stationery column for September 2022. This month's column looks at Belgian airletters and aerogrammes.

Airletters and Aerogrammes of Belgium

Belgium issued its first airletters on 13 February 1948. They were denominated 3.15 fr and were intended for use only to European countries and to the Belgian Congo. The airletters had a stamp depicting 'manufacturing'.

Two airletters were issued, one inscribed in Flemish and French 'OMSLAG-BRIEF - ENVELOPPE LETTRE' (Figures 1-2) and the other with the languages reversed and inscribed 'ENVELOPPE LETTRE - OMSLAG-BRIEF'.

Belgium is a multilingual country with Dutch (Flemish) spoken by almost 6 million people mainly

in the north (Flanders), French by about 4 million people mainly in the south (Wallonia) and German in the East by less than 100 000 people. Brussels is bilingual with both French and Flemish commonly spoken. As a result, Belgian stationery, including airletters, appears with headings and instructions in

one or some combination of these languages.

On the 15 December 1948, the airletter rate was increased to 4 fr. The 3.15 fr airletters were used with additional adhesives until the 4 fr airletters were released. Figure 1 shows a 3.15 fr airletter used to France from Brussels at the 4 fr rate in February 1949 with the addition of 0.85 fr in additional adhesives. Figure 2 shows usage to the USA with the payment of 3.40 fr in additional adhesives in November 1949.

Airletters in the new rate were issued on 4



Figure 1 3.15 fr Aerogramme used to France, Flemish/French Headings



Figure 2 3.15 fr Aerogramme used to USA, Flemish/French Headings

Ian McMahon



Figure 3 4 fr aerogramme, French/Flemish Headings

November 1949. Once again French/Flemish (Figure 3) and Flemish/French (Figure 4) versions were issued. From 1 December 1949, these airletters could be used to non-European countries on payment of an additional 3fr. From this time until 1957, the issued airletters paid only the rate to Europe and the Belgian African territories.

Figure 4 shows an airletter used to Australia in 1952 at the 7 fr non-European rate.

In January 1952, an airletter (Figure 5) was issued which had in addition to the French/Flemish heading, the German heading 'Umschlagebrief'. During 1952, the earlier unwatermarked paper was replaced by paper watermarked with horizontal or vertical lines about 25 mm apart. Airletters with Flemish/French and French/Flemish headings were issued on the new paper.

In July 1953, aerogrammes were issued with

new headings to conform to the new UPU regulations requiring airletters to be inscribed Aerogramme to enable them to pass at reduced postal rates. 'Aerogramme' replaced 'Enveloppe-Lettre' and 'Aerogram' replaced 'Omslag-Brief'. Again, the aerogrammes were issued in French/Flemish and Flemish/French (Figure 6) forms on paper with vertical or horizontal widely spaced lines. The aerogramme in Figure 6 is used to Australia and is hand stamped 'Trouvé a la Boîte' indicated that it was posted incorrectly.

In July 1954 the design of the reverse of the aerogrammes was changed so that the sender's name and address lines were now arranged horizontally. These aerogrammes were issued in French/Flemish, Flemish/French and French/Flemish/German ('Aerogramm') forms on paper with vertical or horizontal widely spaced lines.

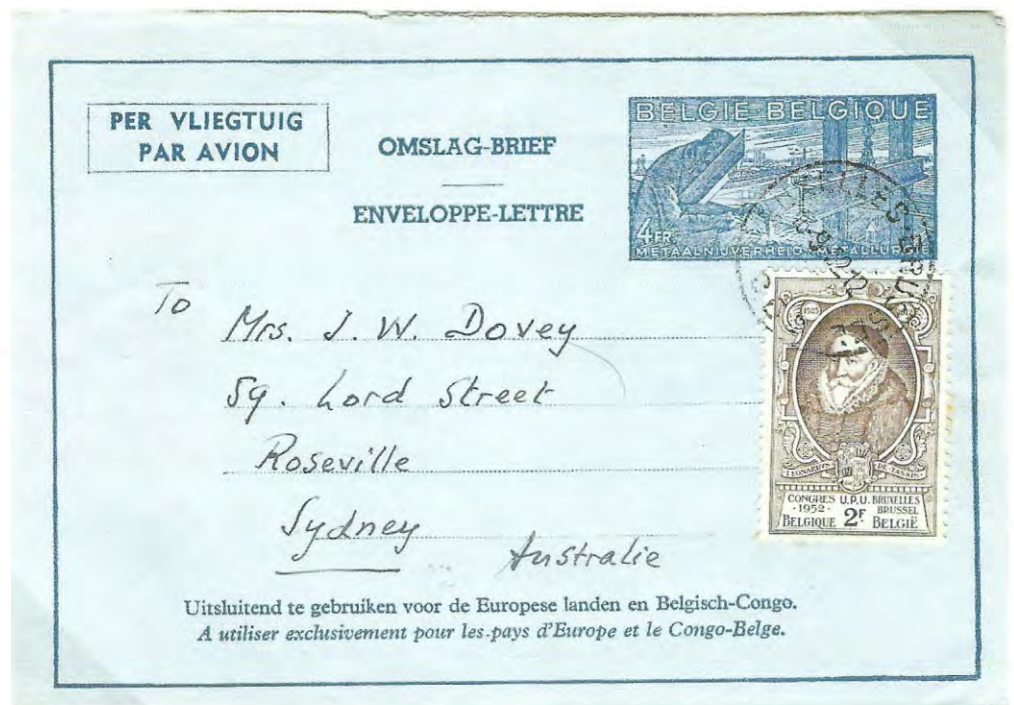


Figure 4 4 fr Aerogramme used to Australia, Flemish/French Headings

Postal Stationery

On 8 November 1958 a totally new design was introduced depicting a four engine jet (Figures 7-9). This stamp design was to continue until 1982 with many variations in denominations, paper, colour knives and headings.

The first issue came in French/Flemish and Flemish/French versions and on blue paper with vertical or horizontal widely spaced lines (25 mm apart). In 1959 forms were issued on a turquoise coloured paper with vertical or horizontal widely spaced lines about 28 mm apart and in a German/French/Flemish version.

In 1960 forms were issued on blue paper with

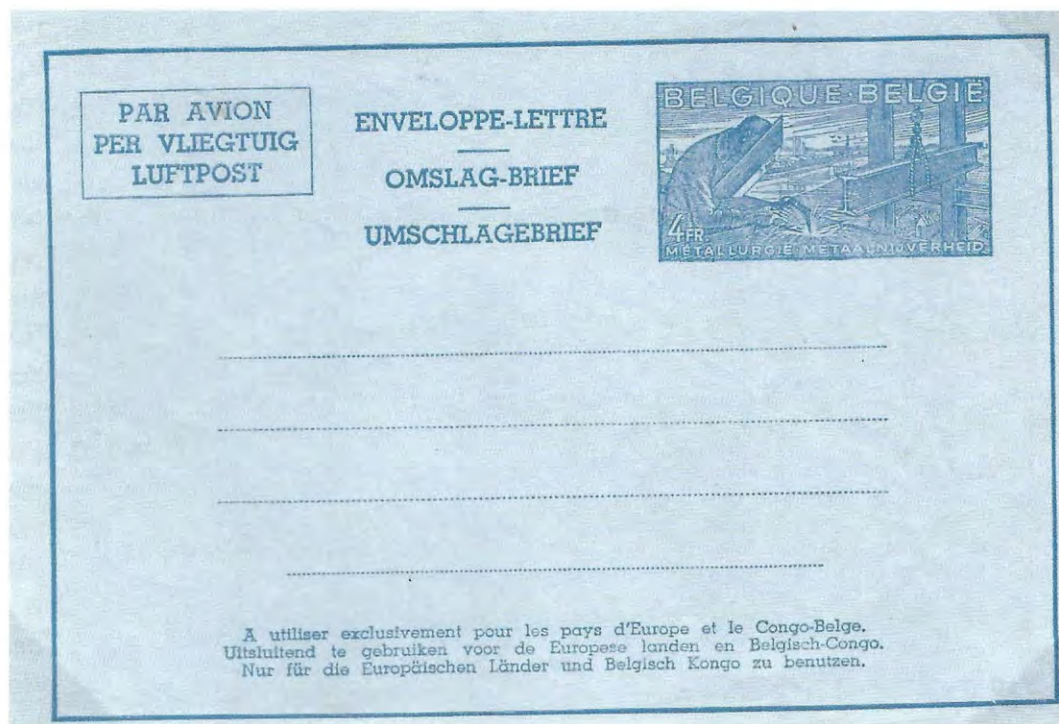


Figure 5 4 fr aerogramme, French/Flemish/German Headings

vertical or horizontal widely spaced lines about 28 mm apart and in French/Flemish and Flemish/French versions.

In 1968, the headings of the aerogrammes were

changed to sans serifed characters. French only, French/Flemish, Flemish/French and German/French versions were issued. This became the standard 'set' of heading varieties for Belgian aerogrammes into the 1990s. Unlike other types of stationery, no Flemish only version could be issued due to the UPU's requirement that the forms be inscribed 'aerogramme'.

Later in 1968 the Flemish heading for 'aerogramme' was changed to 'Luchtpostblad'. A new French



Figure 6 4 fr Aerogramme with 'Aerogram Aerogramme' used to Australia, Hand stamped 'Trouvé a la Boîte'

Ian McMahon

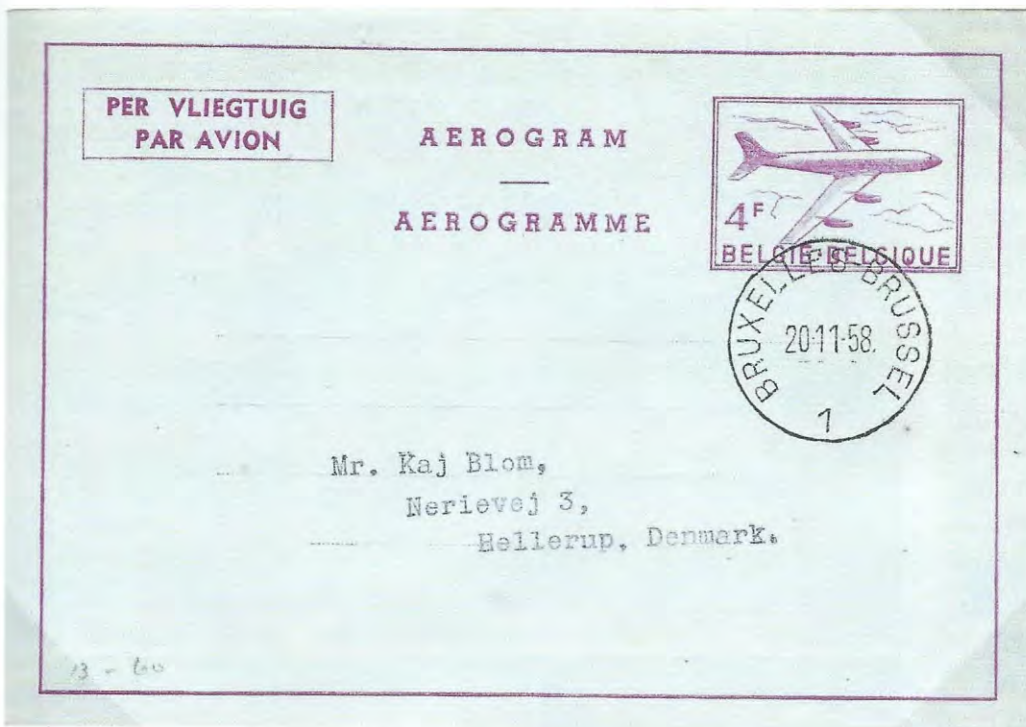


Figure 7 4 fr Jet design, Flemish/French Headings

only aerogramme also appeared with the inscription 'Ouvrir ici' on the flap in smaller letters (14 mm long instead of 16.5 mm). These aerogrammes were produced using two different knives, one with the flaps with curved edges and the other with straight edges.

From 1 October 1957 until 1972, the issued aerogrammes paid only the rate to the Belgian African Territories with adhesives needing to be added for use to all other countries. Different rates continued to apply for use to European and non-European destinations. For example, from 1 October 1957, the rate to European countries increased to 5 fr while the rate to other countries was 6.50 fr. These increased to 6 fr and 7.50 fr respectively in 1959 and 7 fr and 8.50 fr respectively in 1969. In 1969 the rate to the Belgian Congo was increased

to 4.50 fr resulting in the issue of a 4.50 fr aerogramme. Figure 10 shows a 4 fr aerogramme used from a Belgian Antarctic Base in 1959. Additional adhesives have been added to pay the overseas aerogramme rate. On 1 June 1972, the three tier aerogramme rates were abolished with the aerogramme rate being set at 8 fr and made uniform to all countries.

Between 1972 and 1976 the aerogramme rates rose steadily. As a result the denomination of the issued aerogrammes rose to 8 fr in 1973, 10 fr in 1974 and 14 fr in 1976 (Figure 11). In each case

aerogrammes in the same design and with the same heading types were issued. At the time of the increase to 10 fr, the 8 fr aerogrammes were revalued by the addition of an impressed 2 fr Belgian lion



Figure 8 4 fr Jet design, French/Flemish

Postal Stationery

stamp (Figure 12). The 4.50 fr and 10 fr aerogrammes were also issued revalued to new postal rates by the addition of a machine imprint.

In 1982 17 fr commemorative aerogrammes were issued for the Philatelic Exhibition Belgica 82. These aerogrammes have a stamp depicting a medieval postman in lilac brown. With this rate rise, the opportunity was taken to change the stamp design to a plane and globe (Figure 13). This same design was used for the 22 fr aerogrammes issued in 1984 when the aerogramme rate was increased. In 1988 another design depicting a plane over a globe was introduced for 24 fr aerogrammes. This design was used again in 1990 for 25 fr aerogrammes and in 1994 for 32 fr aerogrammes. All of these aerogrammes were issued in French only, French/Flemish, Flemish/French and German/French versions.

Further information on Belgian aerogrammes can be found in *Kessler's Catalog of World Aerograms*, *Les Entiers Postale de Belgique*, Michel Catalogue Postal Stationery of West Europe and *Aerogramme von Europa* (J and H Greiner).

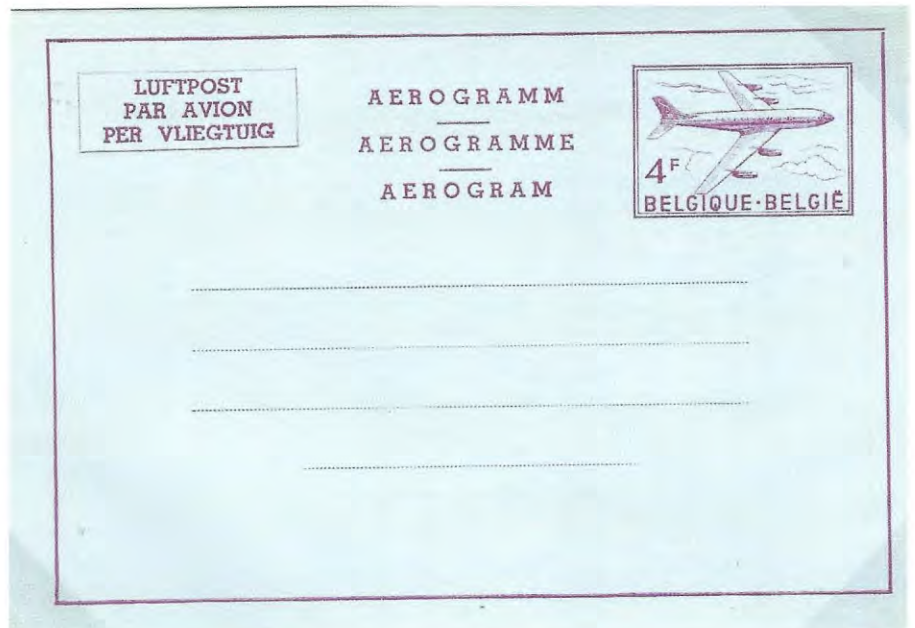
Prepaid Postcards

A set of three prepaid postcards were issued by Australia Post on 11 July 2022 depicting photographs of budgerigars by renowned bird portrait photographer Leila Jeffreys and show the wide colour variation achieved through selective breeding (Figure

Figure 9 4 fr Jet design, German/French/Flemish

Figure 10 Aerogramme used from the 1959 Belgian Antarctic Expedition

Figure 11 14 fr Aerogramme



Ian McMahon

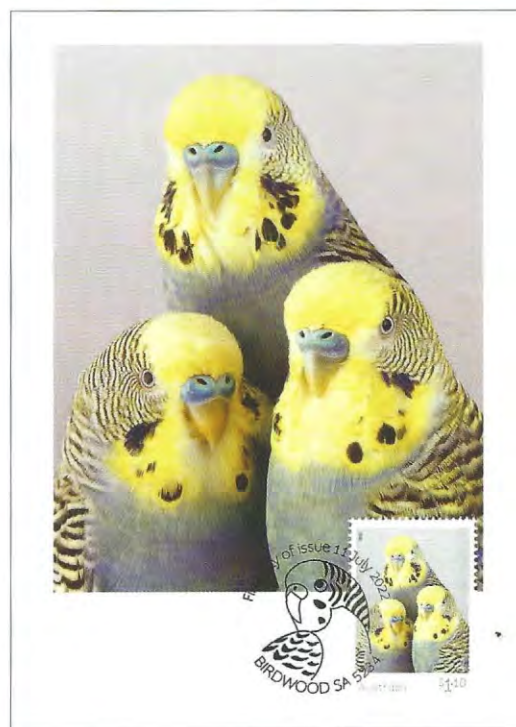


Figure 12 8fr + 2fr Aerogramme, French only Heading

Figure 13 17fr Aerogramme used to Israel, Flemish/French Heading

Figure 14 Prepaid Postcard depicting Budgerigars ('The Tweets')

14). The varieties shown include The Tweets, Bluey and Liquorice, and Celery. A prepaid postcard was issued to mark the 50th anniversary of the knighting of Pastor Sir Douglas Nicholls on 5 July 2022.

Postal Stationery at Helvetia 2022

Helvetia 2022 was a World Stamp Exhibition held in Lugano Switzerland from 18-22 May 2022.

Helvetia 2022 included a strong postal stationery competition with 22 exhibits on a wide range of topics. Large Gold medals were awarded to German Baschwitz for his exhibit, *Spain Postal Stationery of General Use (1873-1938)*, and Sandeep Jaiswal for *British India Queen Victoria Postal Stationery*, Frank Walton was awarded a Gold medal with Fe-

licitations for *Great Britain QEII Registered Envelopes of the Tudor Rose design*. The only Australian exhibitor was Ian McMahon with Envelopes and Postcards of Canada which received a Gold medal. The *Postal Stationery Collector*, the Journal of the Postal Stationery society of Australia, received a vermeil medal.

Future International Exhibitions

Entries are now open for IBRA 2023 World Stamp Exhibition which will be held on 25-28 May 2022 at Essen Germany. Information about the exhibition can be found at <https://ibra2023.de>. Entries should be sent to me at ian.mcmahon4@bigpond.com by 16 September 2022.

Postal Stationery

Welcome to the postal stationery column for October 2022. This month's column looks at QANTAS stamped-to-order (STO) express post envelopes, an unusual New Zealand postal card, new literature on postal stationery and South African postal cards issued to support the Cape Town 2022 international stamp exhibition.

QANTAS STO EXPRESS POST ENVELOPES

Back in the days when you needed a paper ticket to travel by air, QANTAS found the express post service a useful means of distributing flight tickets. So useful that they ordered STO envelopes, 23.1 x 12.1 cm in size (slightly larger than DL). These envelopes were first documented in the Postal Stationery Collector (PSC) in 1996 and over the years a number of different printings have been reported. All of the envelopes have a printed address for QANTAS Express Ticket Centre Locked Bag B767 Mascot NSW 2020. With the advent of e-tickets the envelopes became unnecessary.

Some of the known printings of these envelopes are illustrated below. The first printings had the Australia Post logo in one-line on the front and reverse. They have a self-adhesive labeled with 'QA' and seven numbers (Figures 1 and 2). The lowest number I have seen is QA0145263. These envelopes do not have a barcode, presumably because they were not intended to be sold over the post office counter.

There was also a printing with the same Australia Post logo but with the addition of a logo indicating Australia Post's support of the 1996 Atlanta Olympics. The envelope shown in Figures 3 and 4 is numbered DLQ025636 and is postmarked 29 July 1996. This envelope has a barcode numbered 9312650905057.

The next printings have an Australia Post logo with 'Australia Post' in two lines on both the front and reverse of the envelopes (Figures 5 and 6). The barcode is numbered 9312650905064.

A fourth group of envelopes has a boxed Australia Post logo on the front and the two-line logo on the reverse (Figures 7 and 8). The barcode is again numbered 9312650905064. The colour of the envelopes vary from yellow to dark yellow with the red

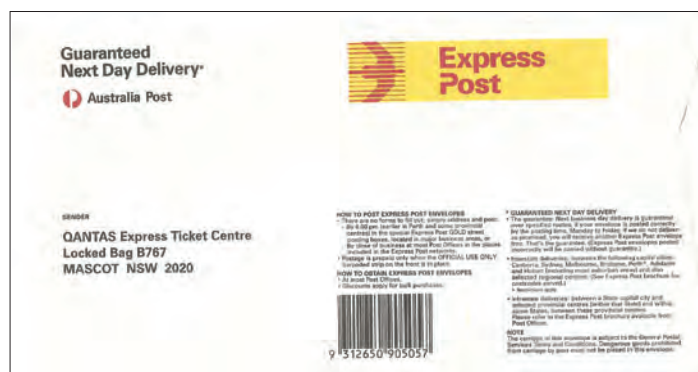
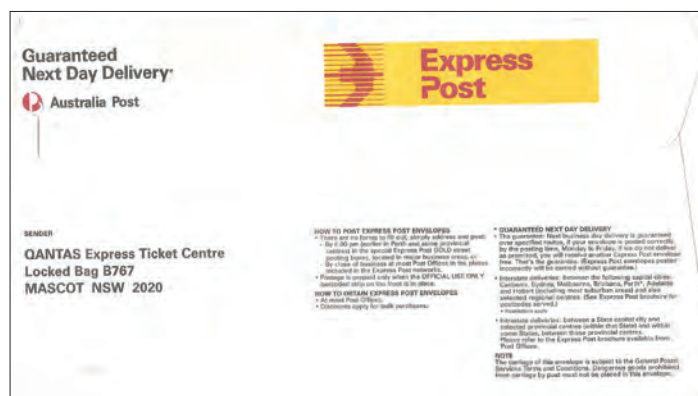


Figure 1 QANTAS STO Express Post Envelope with Australia Post logo in one-line

Figure 2 Reverse of QANTAS STO Express Post Envelope with No Barcode on Reverse

Figure 3 Envelope with 1996 Atlanta Olympics Logo

Figure 4 Reverse of Envelope with 1996 Atlanta Olympics Logo

Ian McMahon



Figure 5 Envelope with two line Australia Post Logo

Figure 6 Reverse of Envelope with two line Australia Post Logo

Figure 7 Envelope with boxed Australia Post Logo on the Front

Figure 8 Reverse of Envelope with boxed Australia Post Logo on the Front

printing varying from orange-red to dark red. The barcode is numbered 9312650905064.

A fifth group is similar to the fourth group but with self-adhesive labels with smaller numbers (Figures 9 and 10). The lowest number I have seen on these envelopes is QA0587982 while the highest number in Group 3 is QA0506795.

I have recently seen an unusual envelope (Figures 11, 12 and 13). The front is similar to a group four envelope with a boxed Australia Post logo but with the logo to the right of the envelope rather than below it. The label is numbered QA0535218. The reverse is also similar but has the message about the express post guarantee highlighted with an asterisk and in red under the heading 'THE GUARANTEE'. Unusually it has a barcode numbered 9312650905057 which has been obliterated and a barcode numbered 9312650905064 to the right. I haven't seen an example of this envelope with the barcode unobliterated.

Generally speaking, express post envelopes are not postmarked so that the date they were used is often unknown. DL express post envelopes first appeared in July 1994. DL envelopes with two-line Australia Post logos in mid-1997 and the boxed Australia Post logo DL envelopes in late 1997. The envelopes in this article are therefore also likely to have come from the same period.

No doubt there will be other variations of these envelopes and I would be very interested in hearing about any you may have or have recorded. Two other users of STO express post envelopes were BHP and Westpac. While these have been reported in *PSC*, other variations of these envelopes must exist. In addition, we would expect that there would be other users of STO express post envelopes.

New Zealand 1d Universal Auckland Exhibition Postcard with UPU Receiving Authority Specimen

Buried in a recent auction lot with a range of New Zealand penny universal adhesive stamps variously overprinted for the Auckland Exhibition, Samoa, Niue etc was this Auckland Exhibition 1d postcard doubly overprinted 'SPECIMEN' (Figure 14). The description of the item indicated that the overprint was a Bechuanaland Receiving Authority Hand-

Postal Stationery

stamp and that the view on the reverse was Victoria Street Looking West in Sepia. New Zealand when supplying postal stationery to the UPU for distribution to its members supplied mint postal stationery so that items sent to the UPU can only be identified by the presence of receiving authority handstamps or index numbers identifying that it has come from the UPU archive.

New Books on Postal Stationery

Michel Ganssachen Deutschland 2021/2022 (Figure 15) Hardcover – 5 November 2021: this new edition contains the official postal stationery (envelopes, wrappers, letters, postcards, etc, including service post and official issues from all German areas. Available for about \$180 from Book Depository.

Guide to the Postal Stationery of Iraq, second edition, published 2022 by The Royal Philatelic Society London, edited by Clayton Rubec and Akthem Al-Manaseer. Softcover, 148 pages, color illustrations Available from RPSL for £25.00 plus postage at www.rpsl.org.uk/home/publications. This new edition has added 38 pages to the original, and includes many improvements and new items as well as a table of contents.

Ceylon Postal Stationery Another Look at King George V Postal Stationery Envelopes (Figure 16) by Graham Winters FRPSL: Published 2022 by The Royal Philatelic Society London. Available from RPSL for £23.00 plus postage at www.rpsl.org.uk/home/publications.

The author states that “Since embarking on this study in 2011, I have been asked a number of questions about what I’m doing and why. Put simply, the King George V postal envelopes have been a little-known area for Ceylon Postal Stationery collectors. The Registered Envelopes, printed by De La Rue, are recorded in the De La Rue Archives, but the postal envelopes, all printed in Ceylon, are recorded nowhere. In 2012, Kurt Kimmel and I carried out some philatelic research in Colombo, amongst other things, looking for any surviving details about the printing of this stationery. There are no surviving records, therefore dates of issue, numbers issued, numbers of proofs and colour trials etc, are simply unknown. Regarding varieties, I have gathered together as much information as

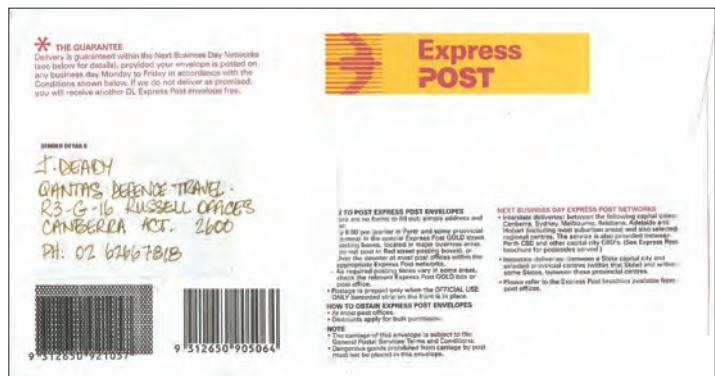
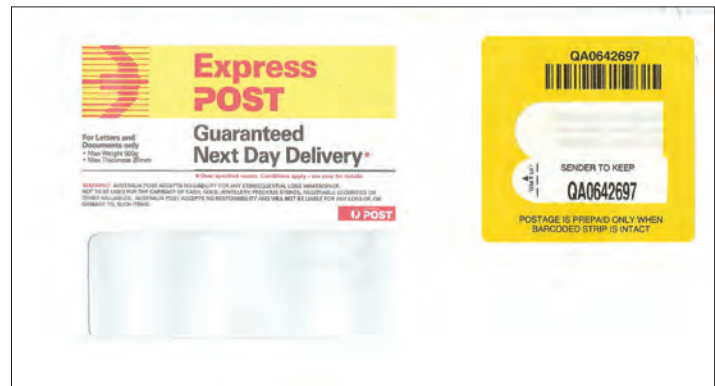


Figure 9 Envelope with boxed Australia Post Logo on the Front and Narrow Lettering on the Adhesive Label

Figure 10 Reverse of Envelope with boxed Australia Post Logo on the Front and Narrow Lettering on the Adhesive Label

Figure 11 Envelope with Changed Barcode on Reverse

Figure 12 Reverse of Envelope with Changed Barcode on Reverse

Ian McMahon



Above:

Figure 13 Changed Barcode on the Reverse

Figure 14 1d New Zealand Auckland Exhibition Postal Card UPU Specimen with Receiving Office 'SPECIMEN' Overprint.

Right:

Figure 15 Michel Ganzsachen Deutschland 2021/2022

Figure 16 Ceylon Postal Stationery: Another Look at King George V Postal Stationery Envelopes



possible, but as will be seen, this is very limited. A further reason for concentrating on the postal envelopes in more recent times, is that Chandra Rodrigo never completed his 'Postal Stationery Envelopes' catalogue... part three of his series*. Other King George V postal stationery from Ceylon is included in Chandra's part two catalogue... "Postal Cards; Letter Cards; Letter Sheets & Wrappers", and further study of Ceylon Wrappers has been published by Jan Kosniowski in his world-wide compendium. This monograph therefore perhaps fills something of a 'void'. I will be interested to see if anyone can add to the story." The Table of Contents include Foreword, Preface and Acknowledgements; Chapter 1 The Proofs and Printing 1911–19, Chapter 2 The First and Second Issues 1912 and 1915, Chapter 3 Third Issue; Post-War Colour Changes and First "Provisionals" 1918–19, Chapter 4 The Fourth Issue 1921, Chapter 5 The First Surcharged Provisional



Issues 1922–24, Chapter 6 The Fifth Issue 1923–25, Chapter 7 Rate-Reduction Surcharges 1926–29, Chapter 8 Three Languages Die II Value Tablets and the Purple Colours 1927–29, Chapter 9 The Dark Carmine-Rose Colour 1929–35, and Appendices.

The 1840 Embossed Wyon -Whiting Essays Their Genesis and Subsequent Influence on British Postal

Postal Stationery

Stationery (Figure 17) by Alan Huggins RDP Hon. FRPSL & Anthony Wicks: Published 2021 by The Royal Philatelic Society London. Available from RPSL for £45.00 plus postage at www.rpsl.org.uk/home/publications. The Publisher's publicity states "The stimulus for undertaking the production of this book was a shared enthusiastic interest in, the various aspects of the Postal Reforms which were campaigned and planned for in the 1830s, and resulted in very significant changes in the operation of the British Post Office following the introduction of Uniform Penny Postage on 10th January 1840. Although these 'Wyon-Whiting embossed Essays' have been known to philatelists for some 150 years, the earliest detailed account being published by Philbrick & Westoby in 1881 15, relatively little had been written since then. Our primary objective in preparing this book has been to set the context of the 1840 Wyon-Whiting Essays within the aims of the reforms being introduced in 1840 for the prepayment of postage, and their ultimate destiny to retrieve the unsatisfactory reception given to the Mulready postal stationery in May 1840. The 1841 embossed envelopes were a world first, and provided a design concept which served the British Post Office for over 130 years, and was also adopted by many other countries. At the same time, we have taken the opportunity to put on record the range of products manufactured by Whiting and his associates which involved combining embossing with engine-turning and other printing techniques Thus, the first three Chapters are concerned with Whiting and bring together a number of items some of which at various times have been attributed, not always correctly, to having connections to the 1839 Treasury Competition. Chapters four and five are concerned with the



Figure 17 *The 1840 Embossed Wyon - Whiting Essays Their Genesis and Subsequent Influence on British Postal Stationery*

design proposals involving embossing, used as part of the Mercantile Committee campaign for Postal Reform or submitted in the 1839 Treasury Competition. Chapter six re-examines the chronology and classification of the Whiting and Wyon-Whiting Essays in some detail and attempts to record, with the provenance where possible, the known examples. The decision to abort the introduction of the stamping of paper supplied by the public, only for the stamps designed for this to be further developed for the 1841 embossed envelopes, is described in Chapter seven. Chapter eight, which is an addition to the original concept, provides a summary of the subsequent uses of the Wyon Queen's head die for the 1847-54 embossed adhesive stamps, the delayed introduction in 1855 of the stamping to order service, and the continued usage of the Wyon-Whiting design concept for postal stationery throughout the Victorian era. Four Appendices, a Bibliography and an Index complete the content."

Cape Town International Stamp Exhibition
8-12 November 2022

In order to raise funds for the planned 2022 Cape Town International Exhibition, a set of five post-

Ian McMahon

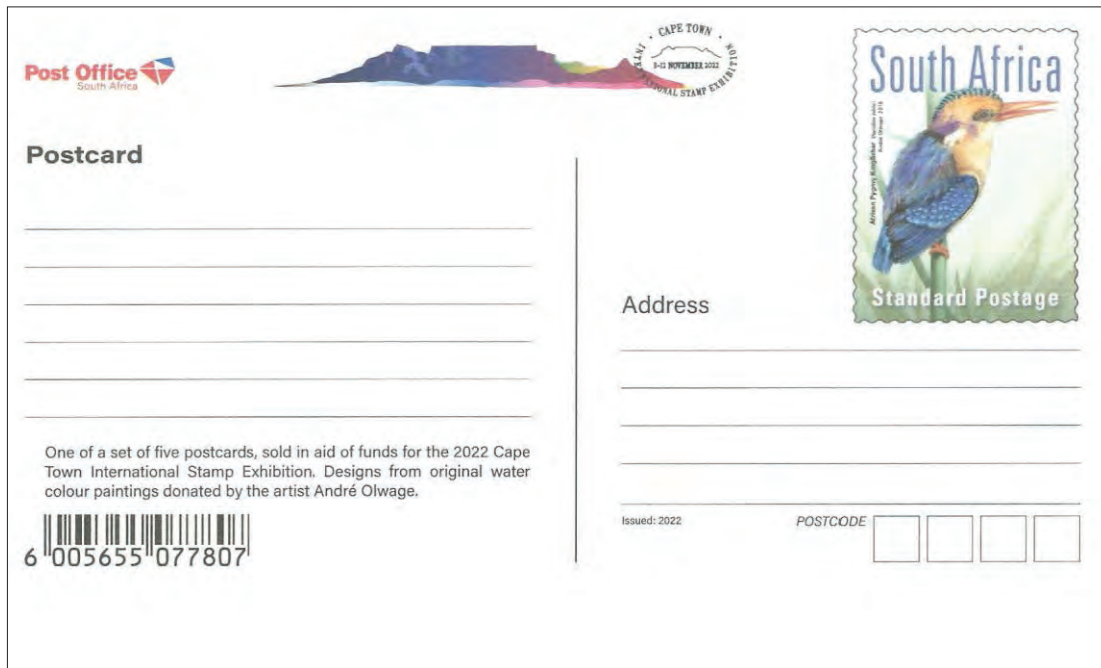
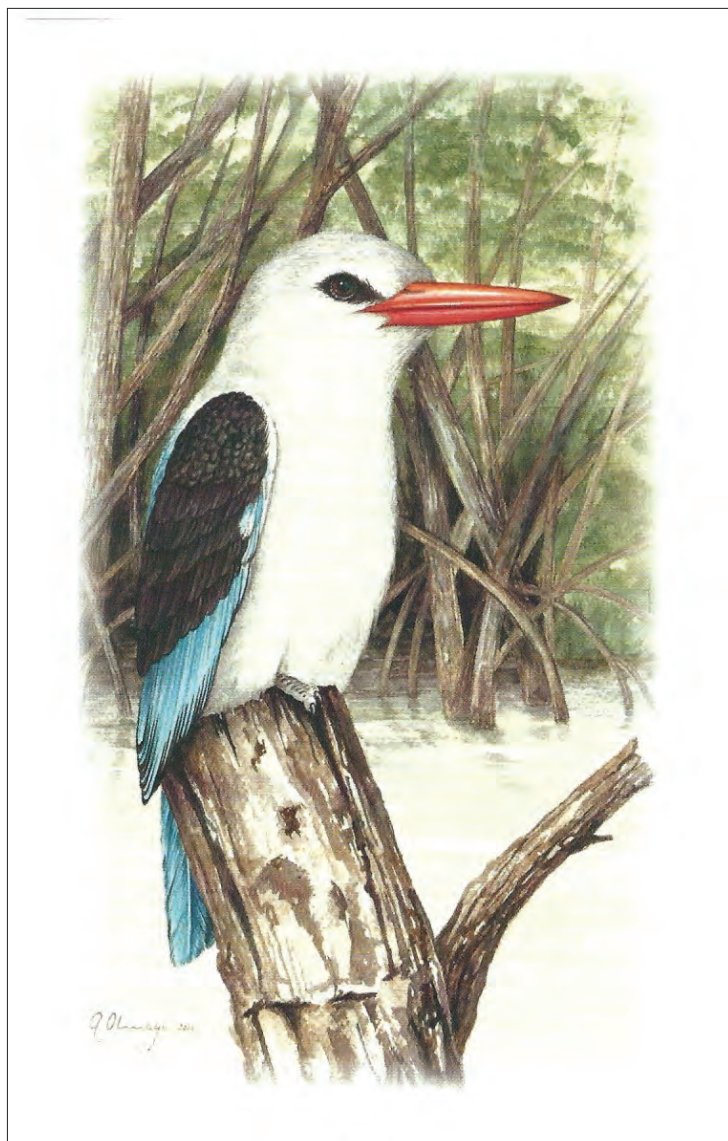


Figure 18 South Africa Postal Card Depicting the African Pygmy Kingfisher

Figure 19 Reverse of South Africa Postal Card Showing Mangrove Kingfisher



cards depicting original artworks by Mr Andre Olwage has been produced for sale to collectors. These same paintings were those used for the 2016 stamp issue. Each card is prepaid with the same kingfisher design as an indicium.

These official Postal Stationery cards (Figure 18 and 19) issued by the Post Office, the fifth in the series, will be sold in a packet of 5 designs, depicting indigenous Kingfishers. The selling price will be US\$10 plus Postage and Packaging of US\$8. Previous official Postal Stationery cards (in sets of 10) showing indigenous birds of South Africa, taken from paintings by the late Mrs. Julia Birkhead, are still available at US\$20 plus Postage and Packaging of US\$8. All sets will be on sale at Cape Town 2022 International Exhibition in November. Orders may be placed with Emil Minnaar by Email: Emil@Minnaar.org

The original paintings by Andre Olwage will be auctioned in November during the exhibition at a date and time to be announced. As an indication of the estimate price per painting we can inform you that a starting bid of R6,000 (approx. US\$385) per painting has already been received. The paintings are framed and their size is 36cm x 54cm.

Emil Minnaar Commissioner General Cape Town 2022 International Exhibition.

Postal Stationery

Welcome to the postal stationery column for November 2022. This month's column looks at the use of Australian registered and express postal stationery on Norfolk Island, new Beyond Blue Prepaid postcards and postal stationery news.

Norfolk Island Registered and Express Post

In the August 2022 issue of the *Postal Stationery Collector*, Bernard Beston reported on the use of Australian non-denominated registration and express post postal stationery by the Norfolk Island Postal Administration prior to the demise of self-Government in 2016.

Bernard commented that Norfolk Island issued its first adhesive postage stamps on 10 June 1947. There was not to be any postal stationery until the issue of the first aerogramme in 1982 (Aerial View of Norfolk Island), however, Australian registered formular stationery issued for use in Australian territories was provided in August 1947 and is known used from the early 1950's (see *the Postal Stationery Volume of the Australian Commonwealth Stamp Catalogue*) with the addition of Norfolk Island adhesive stamps to cover the postage and registration fee 1/0½d (Figure 1) or, from 1 October 1956, 1/7 as the result in an increase in postage rates (Figure 2).

Australia ceased issuing embossed postal stationery registered envelopes in 1969, but introduced non-denominated postal stationery registered envelopes in 1996 and express post envelopes in 1991. Norfolk never issued any non-denominated registered postal stationery or express post envelopes. It did, however, use Australian postal stationery for both services. Norfolk postal rates were the same as Australian postal rates and

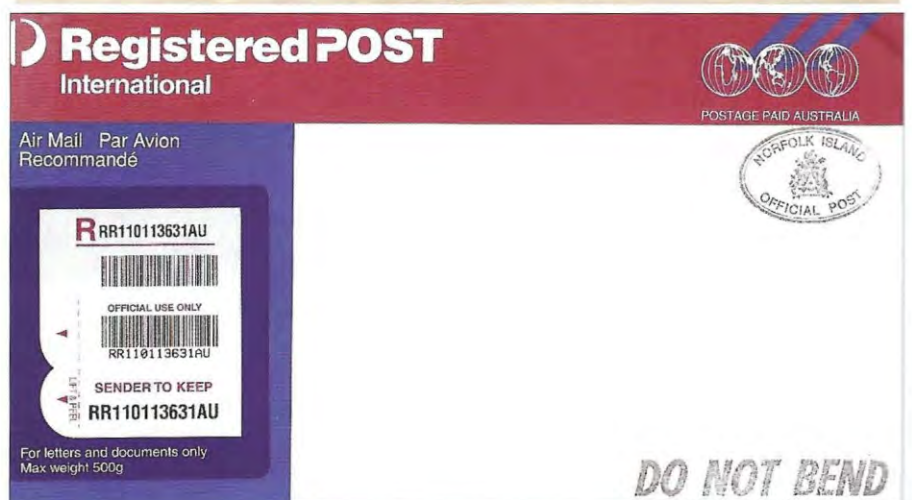
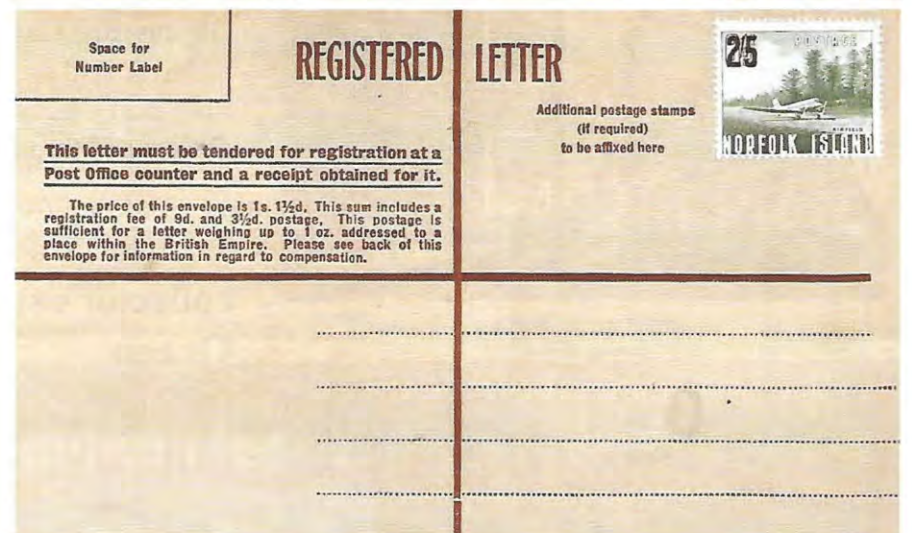
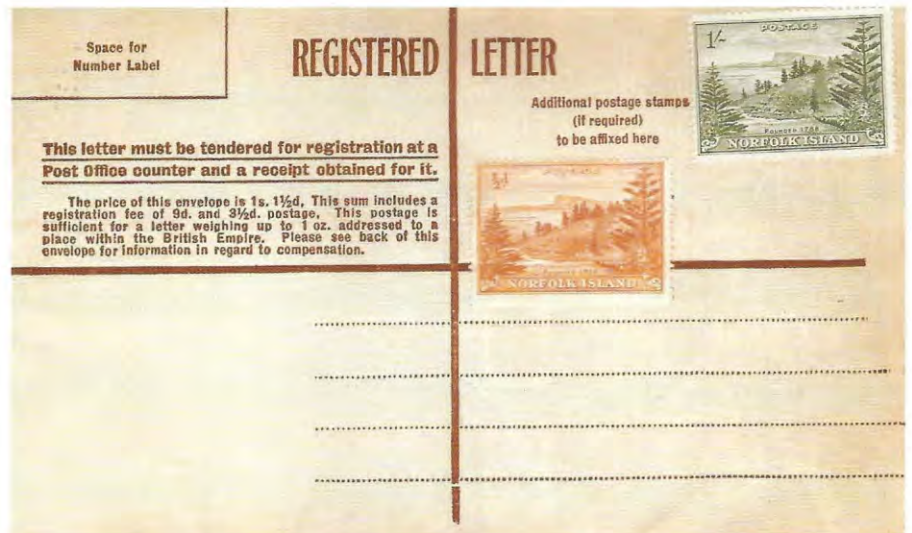


Figure 1 Australian Formular Registered Envelope with 1/0½d in Norfolk Island Adhesive Stamps Added

Figure 2 Formular Registered Envelope with 1/7d in Norfolk Island Adhesive Stamps added

Figure 3 International Registered Envelope for Use by Norfolk Island Post

Ian McMahon

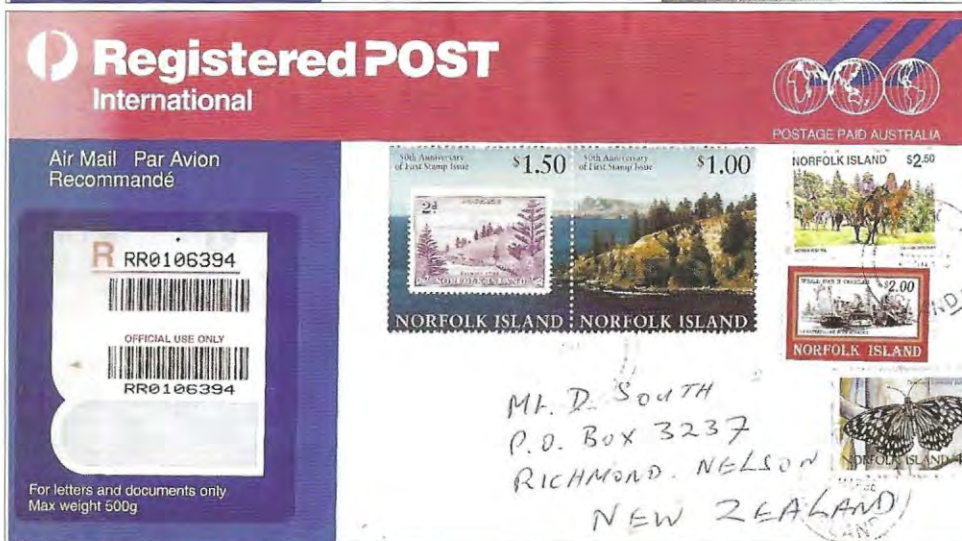
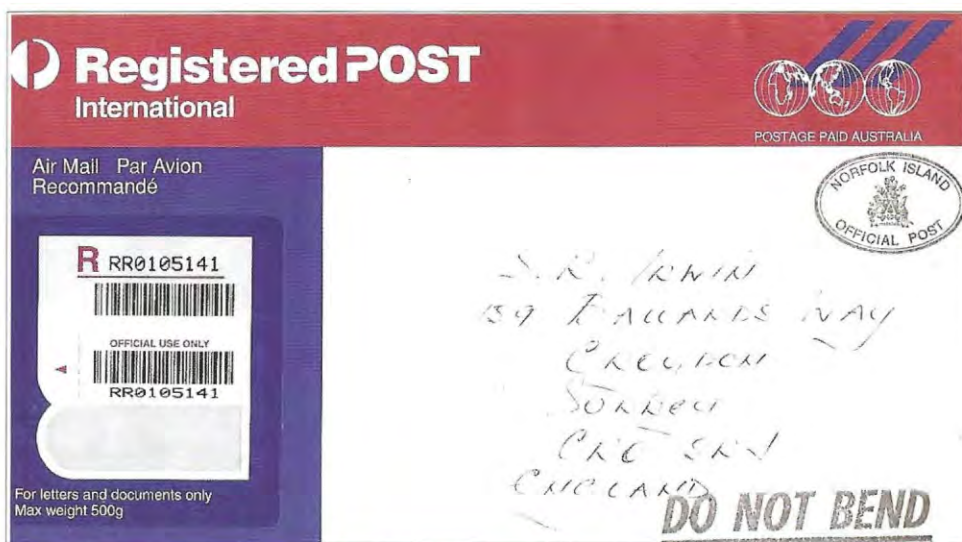


Figure 4 International Registered Envelope Used by Norfolk Island Post to England

Figure 5 International Registered Envelope Used to New Zealand.

Figure 6 International Registered Envelope Used to Australia

controlled by Australia Post. Australian registered envelopes were used handstamped with the Oval “Norfolk Island Official Post” handstamp and additionally cancelled “DO NOT BEND”, both international and domestic registered post envelopes. (Figures 3 and 4).

Figure 5 shows the use of an international registered envelope to New Zealand with the addition of Norfolk Island adhesive stamps. This suggests that while Norfolk Island was using the registered envelopes, the postage value of the envelopes was not recognised. The envelopes used by the Norfolk Post Office Philatelic Bureau would not have required postage to be added as they would have passed free as ‘Services des Postes’ mail. Figure 6 shows an example used to Australia to which Australia Post has added a ‘signature Required’ label.

The Australia Post publicity of the time does not indicate any Express Post service to or from Norfolk Island (Figure 7), but this did exist (Figure 8). Any Express Post service to Australia should have been only available with the domestic Express Post envelopes, but these was subject to Possibly the international Express Post envelope (Figure 9) was used in error or because it was the only Express Post envelope available. No special Express Post service from Norfolk Island to either Australia or the rest of the World existed. The envelope only became express once it reached Australia or New Zealand. This was posted on 10 February 2000, when daily

Postal Stationery

Next Day Express Post Networks available in Queensland

National Network

For next business day delivery, Express Post items can be sent between all places listed below.

Location:	Postcode Range/s
Canberra	2600-2639; 2900-2920
Sydney and Suburbs Gosford Region	2000-2249; 2555-2574; 2740-2786 2250-2263
Newcastle	2280-2300; 2302-2310
Tweed Heads/Murwillumbah	2484-2490
Wollongong Area	2500-2530
Melbourne and Suburbs Geelong and Suburbs Latrobe Valley	3000-3210 3211-3220 3825; 3840-3844
Brisbane Gold Coast	4000-4209 4210-4299
Booval/Ipswich Areas City of Toowoomba	4300-4305 4350
Strathpine/Caboolture Sunshine Coast Areas	4500-4510; 4520 4550-4601
Maryborough City Hervey Bay City Bundaberg City	4650# 4655# 4670#
Adelaide	5000-5199; 5942; 5950
Hobart Area Launceston	7000-7019; 7050-7053; 7055 7248-7325

To and from Perth

From all places listed above to Perth CBD:	6000-6005; 6800-6899
Only from Perth CBD (6000-6005; 6800-6899) to:	Canberra CBD 2600-2601 Sydney CBD 2000-2005 Melbourne CBD 3000-3010 Brisbane CBD 4000-4004 Adelaide CBD 5000-5005 Hobart CBD 7000-7003 Launceston 7250

QLD State Network

Next business day delivery between the places listed below.

Location:	Postcode Range/s
Brisbane and Suburbs Gold Coast	4000-4209 4210-4299; 2484-2490;
Goodna/Booval/Ipswich/Boonah/ Lockyer Valley Toowoomba Area	4300-4349 4350-4428; 4486-4488; 4494-4498; 4602-4618
Strathpine/Caboolture/Sunshine Coast Maryborough/Burnett/Bundaberg Gladstone	4500-4601 4619-4676 4680
Rockhampton/Yeppoon Mackay	4700-4702*; 4703 4740
Townsville Cairns Casino	4810-4815; 4817; 4818 4870 2470#

Service available to townships only in these postcodes.

* Service available to Mail Centre Post Office Boxes only.

Express Post
Guaranteed Next Day Delivery*

For Letters and Documents only
Max Weight 500g
Max Thickness 20mm

Australia Post

To: Company Name **POSTMASTER**
For urgent Attention of **MR A. TAVENER** Telephone ()
PO Box Number¹ or Street Address
Suburb or Town **NORFOLK ISLAND** State **2899**
Postcode

1 PO Box Addresses ensure early morning delivery
* Over specified routes.
Conditions apply - see over for details

WARNING: NOT TO BE USED FOR THE CARRIAGE OF CASH, GOLD, JEWELLERY, PRECIOUS STONES, NEGOTIABLE SECURITIES OR OTHER VALUABLES. AUSTRALIA POST ACCEPTS NO RESPONSIBILITY AND WILL NOT BE LIABLE FOR ANY LOSS OF, OR DAMAGE TO SUCH ITEMS.

POSTAGE IS PREPAID ONLY WHEN BARCODE STRIP IS INTACT

Express POST International

Priority Air Service - Documents only

Max Weight 500g, Max Thickness 20mm

To: **Bernie Beston**
P.O. Box 410
Kiwoa Ring 4021
Country of Destination: **Australia**

SENDER'S DECLARATION: I hereby certify that this envelope contains letters and documents only. It does not contain goods or valuables and must not contain any dangerous or prohibited goods, eg. Explosives, Flammables, Corrosives, Acetone, etc. I also certify that I have read, and I understand the conditions of carriage on the back of this envelope.
Envelopes without this declaration completed will not be forwarded.
* If in doubt ask at any post office. A false declaration is a criminal offence.

BARCODES FOR DESPATCH RECORD ONLY

Figure 7 Express Post Network

Figure 8 Express Post Envelope Used from Australia to Norfolk Island

Figure 9 International Express Post Envelope used to Australia.

Qantas flights to Brisbane were scheduled. The principal user of these envelopes was the Philatelic Bureau, and Bernard has not yet seen any other such envelopes used commercially. He would love to be corrected!

The effective local government control ceased when the Commonwealth took away self-governance by a 2015 Act of the Commonwealth Parliament, and from 1 July 2016 the Island became totally controlled by the Australian Government. Norfolk Island postage stamps ceased to be issued by the local Administration in 2016 and the post office was reduced to that of an

Australia Post LPO. Australia Post has continued to issue Norfolk Island stamps (now also valid for postage in Australia), designed and produced in Melbourne. Australia Post issued adhesive stamps and postal stationery are now valid for use in Norfolk Island (although not all services may be available). However, there has not been any Norfolk Island postal stationery since the 85c Whaleboat Aerogramme issue of 9 October 2003. Australia Post did issue a set of prepaid postcards depicting Norfolk Island scenes but these had the indicium inscribed 'Postage Paid Australia'.

Ian McMahon



Send this free postcard to connect with someone you care about

No stamp required
Australia Post supported mail



Proudly supporting Beyond Blue

Australia Post acknowledges the Traditional Custodians of the land on which we operate, live and gather as team members and recognise their continuing connection to land, water and community. We pay respect to Elders past, present and emerging.



When we connect, we feel better.

That's why, with our partner Beyond Blue, we're helping to connect more people with mental health information and with each other. Try these tips to support your mental wellbeing.



Connect

Feeling connected to others plays a key role in our mental health and wellbeing. Whether it's going for a walk with friends or family, writing a letter, or catching up for coffee, spending time with others is good for you, and for them.



Communicate

A conversation can make a difference in helping someone feel less alone and more supported. If you notice a loved one acting differently, check-in with them and let them know there is support available. Don't be afraid to ask.

To access free mental health information, advice and support 24/7, visit beyondblue.org.au or call Beyond Blue on 1300 22 4636.



Cut here and send the postcard below for free within Australia.



Figure 10 2022 Beyond Blue Prepaid Postcard

Figure 11 Reverse of 2022 Beyond Blue Prepaid Postcard

New Issue of Beyond Blue Prepaid Postcards

In the November 2021 Postal Stationery Column, I reported on Beyond Blue prepaid postcards provided free by Australia Post as an initiative 'to help Australians stay connected through the Covid-19 pandemic with more than four million free prepaid postcards delivered "to rural and remote households" around Australia as well being available for free at participating Australia Post Offices from 6 September 2021'.

On 2 September 2022, Australia Post announced that the free postcards would again be distributed to suburban and regional households' letterboxes and be available at selected post offices around the country 'helping Australians to check in and support one another ahead of R U OK? Day and in the lead-up to Mental Health Month.' Australia Post said "In partnership with Beyond Blue, Australia Post will once again

deliver three million free postcards, which Australians can send free of charge to show they are thinking of family and friends. As well as a blank, prepaid postcard to send to family or friends, there's also a tear-off part that contains helpful information about the importance of connection for our mental health. We were thrilled with the response to this wellbeing initiative last year. It was great to hear stories of people writing postcards for the first time in years and also the joy of finding a surprise message from a loved one in their letter box. This year, with many Australian households under cost-of-living and other pressures, this is a really simple way people can reach out to check in on loved ones or send messages of love and support." Beyond Blue Chief Executive Officer Georgie Harman said the partnership with Australia Post played a significant role in sharing important mental health messages with the community.

Ian McMahon



Figure 10 2022 Beyond Blue Prepaid Postcard

New Issue of Beyond Blue Prepaid Postcards

In the November 2021 Postal Stationery Column, I reported on Beyond Blue prepaid postcards provided free by Australia Post as an initiative ‘to help Australians stay connected through the Covid-19 pandemic with more than four million free prepaid postcards delivered “to rural and remote households” around Australia as well being available for free at participating Australia Post Offices from 6 September 2021’.

On 2 September 2022, Australia Post announced that the free postcards would again be distributed to suburban and regional households’ letterboxes and be available at selected post offices around the country ‘helping Australians to check in and support one another ahead of R U OK? Day and in the lead-up to Mental Health Month.’ Australia Post said “In partnership with Beyond Blue, Australia Post will once again



Figure 11 Reverse of 2022 Beyond Blue Prepaid Postcard

deliver three million free postcards, which Australians can send free of charge to show they are thinking of family and friends. As well as a blank, prepaid postcard to send to family or friends, there’s also a tear-off part that contains helpful information about the importance of connection for our mental health. We were thrilled with the response to this wellbeing initiative last year. It was great to hear stories of people writing postcards for the first time in years and also the joy of finding a surprise message from a loved one in their letter box. This year, with many Australian households under cost-of-living and other pressures, this is a really simple way people can reach out to check in on loved ones or send messages of love and support.” Beyond Blue Chief Executive Officer Georgie Harman said the partnership with Australia Post played a significant role in sharing important mental health messages with the community.

Postal Stationery



The indicium of the postcard is inscribed “No stamp required. Australia Post Supported Mail” as was the case for the 2021 postcards. The postcards are valid for postage within Australia. The 2022 issue of the postcards (Figures 10 and 11) differ in having an ‘acknowledgement of country’ (similar to that used on some postal stationery items issued in 2021 but in colour). The Acknowledgement says ‘Australia Post acknowledges the Traditional Custodians of the land on which we operate, live and gather as team members and recognise their continuing connection to land, water and community. We pay respect to Elders past, present and emerging.

Copies of the postcards seem to have been readily available at many post offices across the country including in Canberra, Brisbane and Adelaide and copies have been reported delivered to some letterboxes.

Spink Auction of New Zealand Postal Stationery

In the March 2022 Postal Stationery Column, I reported on the dies prepared by De La Rue for the 4d New Zealand Mitre Peak registered envelopes. One of the die proofs (Figure 12) prepared by De La Rue for this envelope was sold at the Spink Auction on 26 July 2022 for GBP £1,200. Also, in the auction was an unusual proof (Figure 13), a 1907 King Edward VII progress proof of the embossed King’s Head of the 6d



Figure 12 Mitre Peak Postal Stationery Die Proof

Figure 13 Progressive Proof for New Zealand 6d Telegraph Form Stamp

telegraph form stamp. This sold for GBP£240.

ANPEX 2022

ANPEX 2022 was a National One Frame Philatelic Exhibition organised by the South Australian Philatelic Council on 20 – 21 August 2022 at Hectorville in South Australia. There were two postal stationery exhibits; *Australia - Lettercards Stamped to Order* (Mark Diserio, Large Gold) and *Fur Collar Letter Cards of The Netherlands 1906 – 1918* (Alex Nuijten, Gold).

The Exhibition marked the sesquicentenary of the completion of the Overland Telegraph line between Darwin and Adelaide with a working telegraph link and morse code operator at the Exhibition. Visitors were able to purchase and send a telegram of up to 20 words. A range of souvenirs were produced including a ‘cinderella’ postal stationery telegraph form (Figure 14). The souvenir order form can be found at <https://apf.org.au/wp-content/uploads/2022/07/ANPEX-order-form.pdf>.

SAVPEX 22 (South African Virtual Philatelic Exhibition)

There was one postal stationery entry from an Australian exhibitor at SAVPEX 22 – the annual South African virtual national one frame exhibition; Mark Diserio *Queensland 1d Letter Card and Reply Card* 90 points. Mark’s exhibit can be viewed at https://stamps-africa/wp-content/uploads/2022/07/Queensland-1d-letter-card-and-reply-letter-card_optimize.pdf.

Ian McMahon

Wrappers for Newspapers, Periodicals and other printed material issued and used in the period 1869-1912

FIP Postal Stationery Commission Meeting Indonesia 2022

The FIP Postal Stationery Commission is the body responsible for the exhibition regulations for postal stationery at world stamp exhibitions. The same rules are used at other international and national exhibitions around the world, including at Australian and New Zealand national exhibitions. The Commission met at Indonesia 2022 for the first time since 2018. The meeting (Figure 15) included reports on the activities of the Commission, a presentation on postal stationery exhibiting and an election of the 'Bureau' of the Commission which runs its activities. The presentation was entitled *Postal Stationery: The Good, The Bad and The Ugly* and was presented by Glen Stafford. The presentation from the meeting (along with the report of the Commission's activities) can be downloaded from <http://postalstationery.f-i-p.ch/wp-content/uploads/sites/11/2022/09/PS-Commission-FIP-Indonesia-2022-red.pptx>. The new Bureau of the Commission is: Chairman, Ian McMahon (Australia), Secretary, Michael Smith (United Kingdom), Igor Piric (Slovenia), Frank Li (China), Ross Towle (USA), Juan Reinoso (Costa Rica) and Sammy Chiu (Canada). The Commission's latest newsletter was published in August 2022 and can be found at <https://postalstationery.f-i-p.ch/newsletter/>. The website of the FIP Postal Stationery Commission has been converted to a new site on the FIP website. The new address is postalstationery.f-i-p.ch.

PSSA On-Line Meetings

The next on-line meeting is scheduled for Tuesday 29 November 2022 at 7 PM and will be *Introduction to Postcards of Sweden, 1872 – 1939* by Allen Shatten. Zoom invitations will be sent to PSSA members before the meeting. The December meeting will be a 'member's meeting' with contribution of short presentations, interesting items or research topics. Please contact me on ian.mcmahon4@bigpond.com to arrange a Zoom invitation.

AUSTRALIAN NATIONAL PHILATELIC EXHIBITION 2022

Message Form
No. 6. **Electric Telegraph, South Australia.** No. 13

No. of Words _____ DATE: ___ August 2022 TIME: h. m.

Please send the following message to - _____
C/- ANPEX 2022 Telegraph Station

From sender _____

5	0 Pictures	Pfct	Amlex	2022	
10					
15					
20					

ANPEX 2022
\$1
SOUVENIR TELEGRAM
all extra message
stamps for each five
additional words

MESSAGE RECEIVED

This message was transmitted by morse by a member of the North East Radio Club.

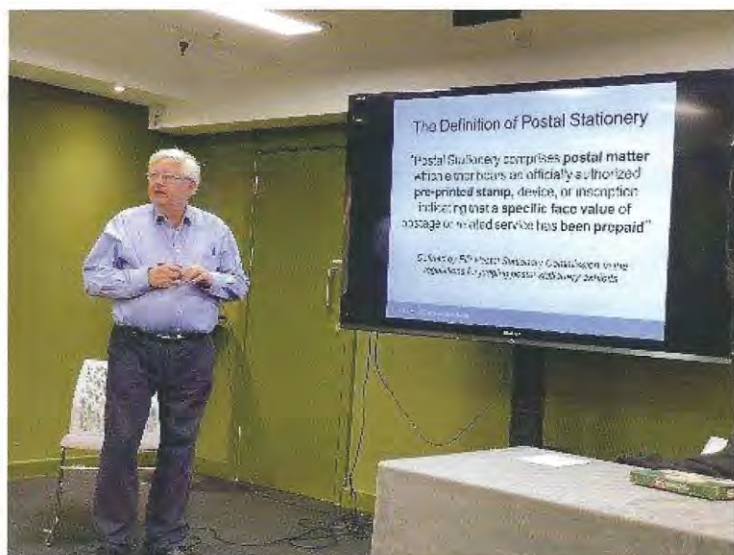


Figure 14 ANPEX Telegram Form with \$1 Impressed Cinderella Stamp

Figure 15 FIP Postal Stationery Commission Meeting, Jakarta 2022

Indonesia 2022 World Stamp Exhibition

Indonesia 2022 was a FIP World Stamp Exhibition held 4-9 August 2022 in Jakarta Indonesia. There were 23 multi-frame exhibits of Postal Stationery and five one-frame exhibits. The award for the best postal stationery exhibit was won by Jaiswal Sandeep (USA) with his exhibit *British India - King George VI Postal Stationery* which also received a Gold medal. There were no exhibits from Australian exhibitors but Sybrand Bakker from the Netherlands received a Large Vermeil medal for his exhibit of *The Victoria*

Postal Stationery

Welcome to the postal stationery column for December 2022. This month's column looks at new issues of postal stationery from Australia and New Zealand and new literature on postal stationery.

The Lord of the Rings: The Two Towers 20th Anniversary Prepaid Postcards

New Zealand Post issued a set of six postal cards on 7 September 2022 for the 20th anniversary of the movie the Lord of the Rings: The Two Towers. The indicium has a face value of \$3 and features Gollum, a character from the film, at the 'forbidden pool' (Figure 1). The reverse of the cards features artworks related to the movie: *The White Wizard*, *Attack of the Warg Riders*, *The Forbidden Pool*, *The Battle of Helm's Deep*, *The Last March of the Ents*, and *The Tales that Really Mattered*. The set of postal cards sold for \$19.76 and were designed by Donna McKenna.

Wallal Solar Eclipse 1922 Prestamped Envelope

A prestamped envelope (Figure 2) was issued on 8 September 2022 to mark 100 years since the Wallal Solar Eclipse experiments were held near Wallal, Western Australia in 1922. In 1915, Albert Einstein proposed his General Theory of Relativity, which suggested that gravity is not a "force" but a bend in the space-time continuum. In 1919, Sir Arthur Eddington confirmed Einstein's theory by photographing a solar eclipse to show a shift in the position of stars due to the Sun's gravity. A total solar eclipse observable from Aus-

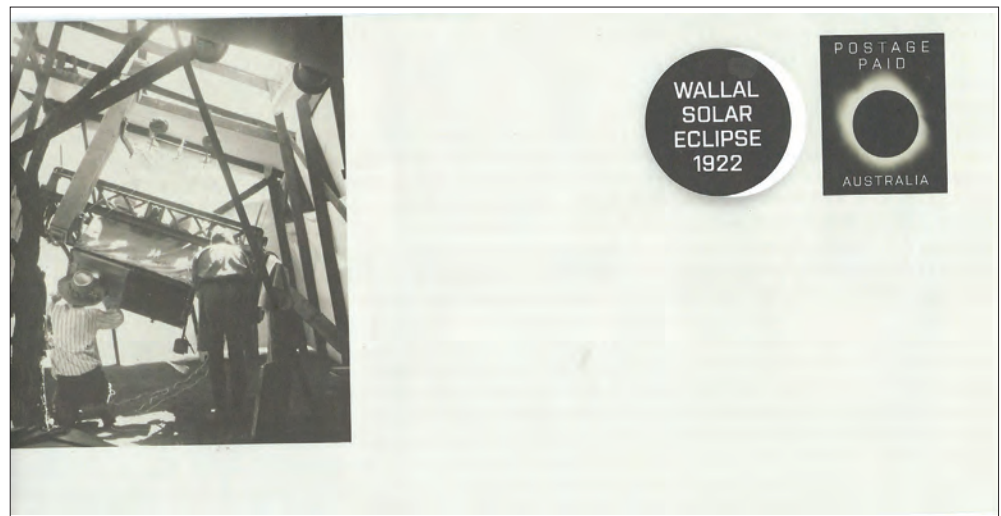


Figure 1 New Zealand \$3 The Lord of the Ring: Two Towers Postal Card

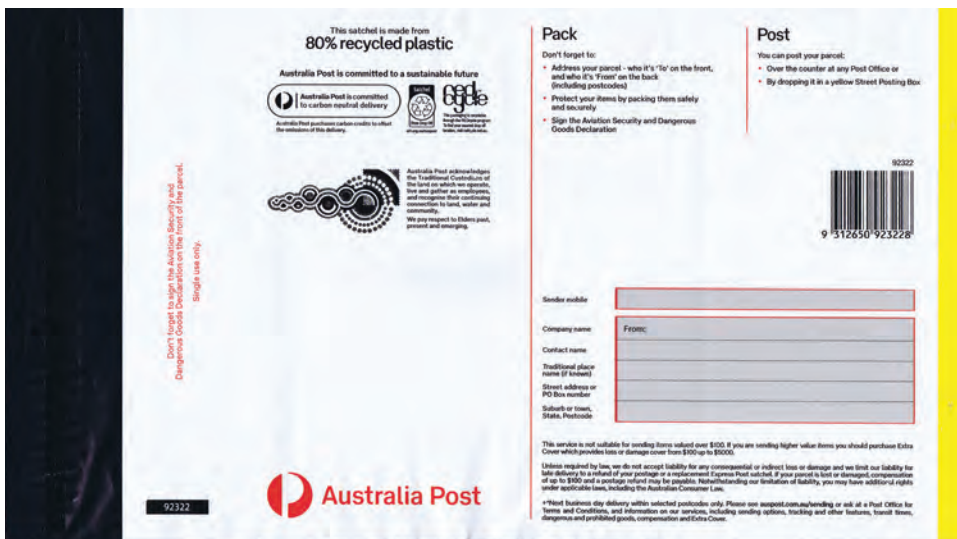
Figure 2 100 years since the Wallal Solar Eclipse Experiments PSE

Figure 3 75th anniversary of Lions Clubs of Australia PSE

Ian McMahon



tralia on 21 September 1922 provided scientists with an opportunity to put this proof beyond doubt. Australian scientific expeditions were set up with the largest contingent at Wallal 300 kms south of Broome. William Campbell from the Lick Observatory, California used a 40-foot coronal camera to prove beyond doubt that Einstein's theory was correct. The indicium features a picture of the solar eclipse taken by the Lick Observatory coronagraph in 1922 while the envelope also features a photograph of team members adjusting the camera. The PSE was designed by Sharon Rodziewicz, Australia Post and sold for \$1.35. A "prestamped envelope" with a \$1.10 indicium depicting Albert Einstein was also produced by Australia Post. This envelope was produced as a Philatelic Numismatic Cover and was not issued mint. It was sold for \$24.95.



75th Anniversary of Lions Clubs Prestamped Envelope

A prestamped envelope (Figure 3) was issued on 6 September 2022 to celebrate the 75th anniversary of Lions Clubs of Australia and features the Lions International logo in the indicium. The first club was formed in Lismore, New South Wales, in 1947 with Lions Australia growing to be Australia's largest service club organisation, with more than 1,200 clubs and 25,000 members. The envelope sold for \$1.35.



Platinum Express Post Prepaid Satchels

Two Platinum express post satchels (Figures 4 and 5) are now available with the Acknowledgement of Land logo on the reverse of the satchels. The satchels are available in small (220 x 355 mm) and large sizes (315 x 405 mm)

Figure 4 Platinum Express Post Envelope with Acknowledgement of Land Logo on Reverse

Figure 5 Reverse of Platinum Express Post Envelope Showing Acknowledgement of Land Logo

Figure 6 C-19 Globemaster Landing in the Antarctic Postal Card

Postal Stationery



*Figure 7 Great Barrier Reef Postal Card
Figure 8 Roses Postal Card
Figure 9 Rock Art of the Kimberley Postal Card Showing Cro*

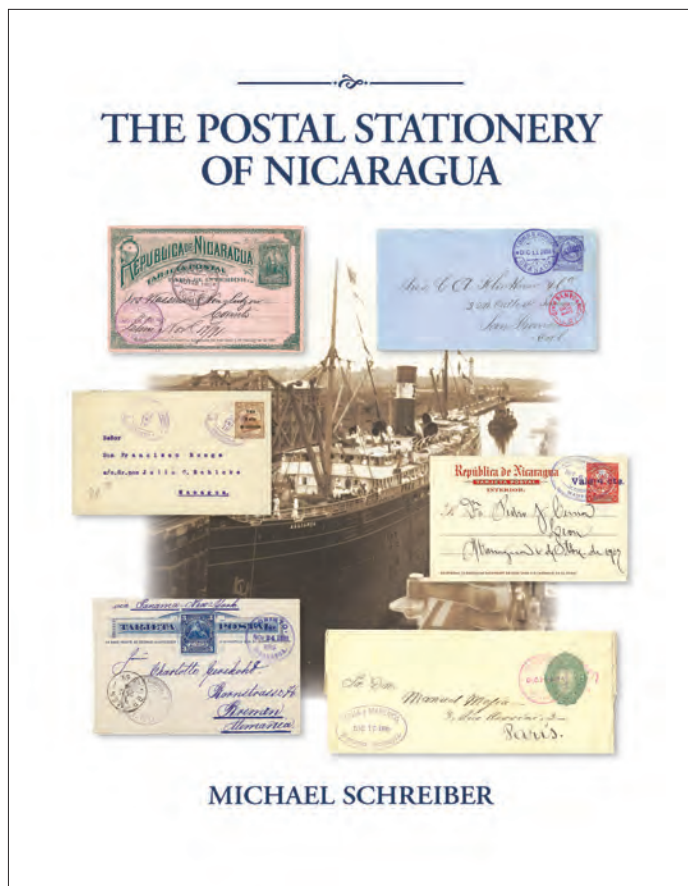
which (prior to the September 2022 price rises) sold for \$18.30 and \$25.15 respectively. Platinum Express Post provides a fast delivery service including Signature on Delivery with the option of purchasing additional Extra Cover up to \$5,000. They prepay postage for up to 5kg within Australia.

July-October Prepaid Postcards

Two prepaid postcards were issued on 19 July 2022 (\$3.70 per set) for the Centenary of the Men's National Football [Soccer] Team: National Football Team 1922 and Socceroos Centenary. Cicadas featured on three prepaid postcards which sold as a set for \$5.55 and were issued on 2 August 2022. The three cicadas featured were: Masked Devil, Golden Emperor and Sandgrinder. The 75th anniversary of Australia's Antarctic Program were commemorated by the issue of four postal cards on 9 August 2022. The cards depicted expeditions on Heard Island in 1947 and 1948, ice-core processing at Aurora Basin

The cards depicted expeditions on Heard Island in 1947 and 1948, ice-core processing at Aurora Basin

Ian McMahon



in 2013 and a Globemaster landing in the Antarctic (Figure 6). The 150th anniversary of the Overland Telegraph was commemorated by a prepaid postcard which sold for \$2.40 and was issued on 23 August 2022. Australian landscapes (Figure 7) were featured on four prepaid postcards issued on 23 August 2022 which sold for \$17.10. The landscapes featured were: Cradle Mountain, Kakadu, Bungle Bungle Range and the Great Barrier Reef. Four prepaid postcards were issued on 13 September 2022 depicting Australian-bred Roses (Figure 8) in the lead-up to the World Rose Convention 2022, which was held in Adelaide between 27 October and 3 November. The roses depicted were: Lorraine Lee, Lady of Australia, Governor Marie Bashir and Dusky Moon. The cards were sold as a set for \$7.40. Two prepaid postcards (Figure 9) were issued on 20 September 2022 depicting Rock Art of the Kimberley in Western Australia, one of the world's richest rock art sites, a dynamic cultural landscape situated within steep mountain ranges, sandstone and limestone gorges, waterfalls, pristine rivers and a rugged coastline that gives way to islands and coral reefs. The cards feature art from the north Kimberley lan-



Figure 10 Postal stationery of Nicaragua

Figure 11 Indicium of a 40c New Zealand Kowhai PSE with Missing Colour

Figure 12 Indicium of Normal 40c PSE

guage and cultural groups of the Wanjinia Wunggurr community depicting Crocodiles and Gwion Gwion figures. The cards were sold as a set for \$3.70.

The commemoration of 50 years since Peter Brock first won the Bathurst car racing event was marked by five prepaid postcards issued on 3 October at the cost of \$9.25 a set. The 150th anniversary of free, secular and compulsory education in Victoria was commemorated by a postal card depicting the Portarlington State School that was issued on 11 October 2022 and sold for \$1.35. On 25 October 2022, four postal cards were issued depicting Australian Rivers (\$7.40 a set): River Murray, Diamantina River, Gordon River and Murrumbidgee River.

The Postal Stationery of Nicaragua

The Postal Stationery of Nicaragua (Figure 10), published 2022 by Mirific Editions, Troy, Ohio, edited by Michael Schreiber. PDF eBook, 8.5x11 inches, 271 pages, colour illustrations, priced. Avail-

Postal Stationery

able through a link on the UPSS website under Exhibits and Downloads <http://www.upss.org/code/exhibits.php>. The downloads are free. The catalogue covers the postal cards, envelopes, wrappers, aerogrammes, and free-frank Envelopes. A chapter on the Panama Rail Road Steamship Line is included along with a bibliography, checklists and a Chart of Postal Rates 1882-1930s. The fascinating issues produced by Seebeck are well covered.

Indonesian Postage stamp Catalogue 2023

For some countries, listings of postal stationery can be found in one-country stamp catalogue, often published annually. This is the case for the Indonesian Postage Stamp Catalogue 2023 which lists the postal stationery of Indonesia from 1945 including the provisional issues on Netherland Indies postal stationery. The listing is priced in Indonesia Rupiah and are in colour. Also included are the issues of Netherland East Indies from 1874-1945 as well as the issues of UNTEA (United Nations Temporary Executive Authority in Netherlands New Guinea).

1988 Kowhai envelope 40c with missing red

Figure 11, shows a 40c New Zealand Kowhai prestamped envelope with missing red which results in a very yellow flower. The envelope has been cancelled on the first day of issue at New Plymouth on 13 July 1988. Figure 12 shows a normal for comparison.

Incorrectly used USA International Reply Postal Card

International reply postal cards comprise a message portion which is intended to be posted from the country of origin with a reply portion which is intended for the addressee to send a reply. Under UPU regulations the reply postcard can be sent without any additional postage. This means that the reply postcard will normally be postmarked by a foreign post office. Illustrated in Fig-

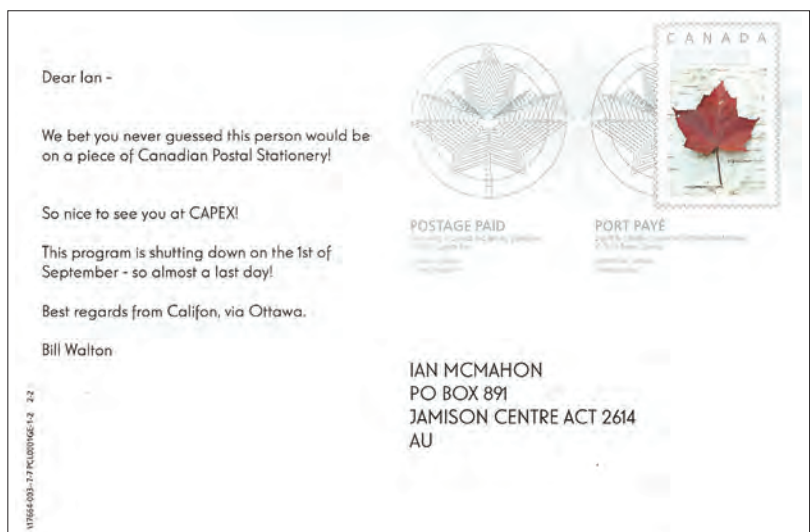
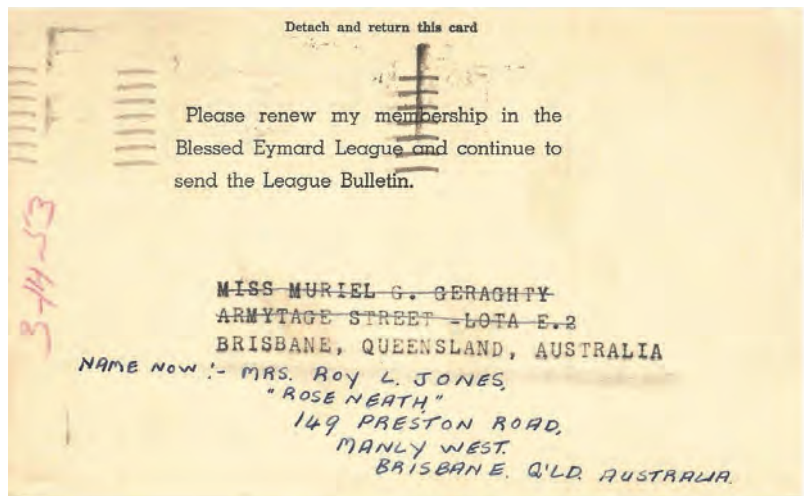
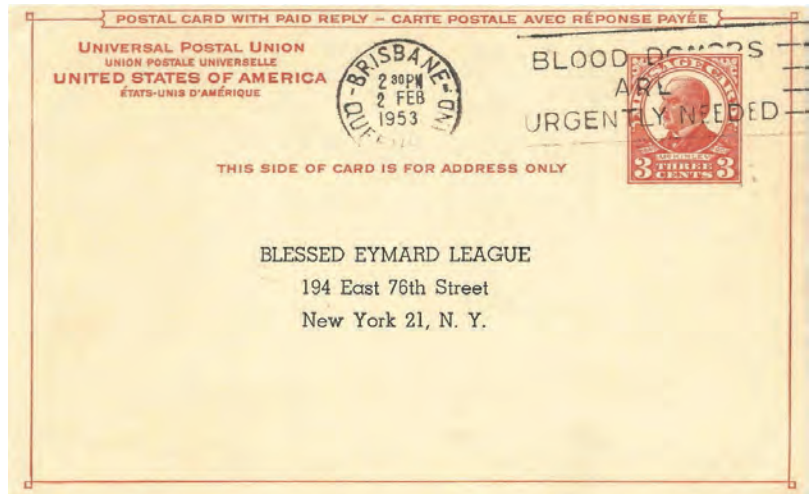


Figure 13 Incorrect Usage of the Message Portion of a US International Reply Postal Card

Figure 14 Reverse of the Message Portion of the US International Reply Postal Card

nov 22 cap prpersonal pc ian.jpg

Figure 15 Canada Personalised Postal Card

Ian McMahon



*Figure 16 Reverse of Canada Personalised Postal Card
Figure 17 27c Postal Card Overprinted Cancelled for Use at
a Post Office Training School*

ures 13 and 14 is an unusual case of the message portion of a USA international reply postcard which has been incorrectly printed by the user so that the reply message has been printed on the message portion. As a result, the sender has in replying posted the message portion in Australia. The card has been accepted and postmarked in Brisbane in 1953 even though it is the reply portion of the postal card that should have been returned.

Canada Post Personalised Postcard Program Ends

Canada Post introduced personalised postal cards in 2000 which enabled customers to upload a picture for the reverse of the card as well as address details, the

name of the sender and a message. A postal card would then be sent to the recipient (or recipients) anywhere in the world. Canada Post advised on 18 July 2022 that it would end the service on 1 September 2022 saying that “While relatively unique when it was introduced in 2000, numerous options are now available online for users to create customised [postcards].” Figure 15 shows the front of a postal card ordered in August 2022 and Figure 16 shows the reverse which shows myself on the left and a well-known Canadian collector of postal stationery on the right. The indicium on the card shows a maple leaf design. Australia had a similar personalised postcard program which was terminated earlier this year.

Postal Stationery Collector November 2022

The November issue of the Postal Stationery Collector includes articles on the 18c embossed envelopes of Australia, Victoria 1895 1d Lettercard with ‘price two pence’ added, *Postal Stationery Wrappers of Canada and Newfoundland: Some Challenges*, and as well as the usual columns on new issues and discoveries.

Australia Post Training School “CANCELLED” Postal Stationery

In a collection recently acquired by a collector, there came a quantity of items cancelled during an Australia Post Training School, most likely in Adelaide. Included were three stationery items bearing a “CANCELLED” handstamp of 57mm x 5.5mm. The 27c pictorial postal card (Figure 17), 36c pre-stamped envelope and 45c aerogramme all date from the early 1980s.

Perth 2023 National Stamp Exhibition

The next national postal stationery competition will be held at Perth 2023, a national philatelic exhibition which will be held 2-5 November 2023 at Gloucester Park Racecourse in Perth. The exhibition will include an international postal stationery challenge. Further details can be found at <https://www.perth2023stampshow.com/>.